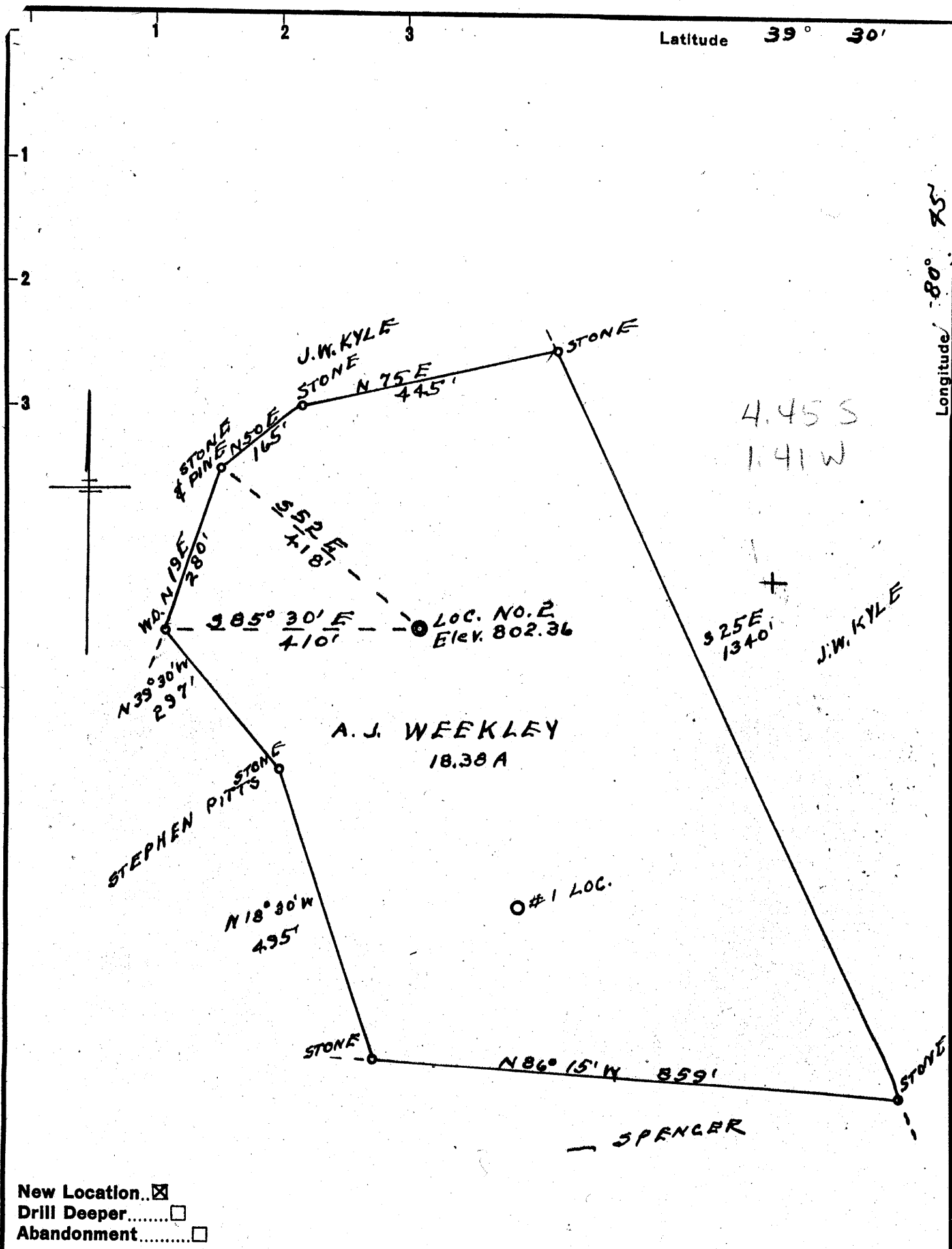


Latitude 39° 30'

Longitude 80° 75'



New Location..
 Drill Deeper.....
 Abandonment.....

Company RALPH C. HALBERT
 Address EVANSVILLE IND.
 Farm A. J. WEEKLEY
 Tract _____ Acres 18.38 Lease No. _____
 Well (Farm) No. 2 Serial No. _____
 Elevation (Spirit Level) 802.36
 Quadrangle WEST UNION
 County TYLER District MCELROY
 Engineer S. R. Dye
 Engineer's Registration No. 804
 File No. _____ Drawing No. _____
 Date 4-25-56 Scale 1" = 200

STATE OF WEST VIRGINIA
 DEPARTMENT OF MINES
 OIL AND GAS DIVISION
 CHARLESTON

WELL LOCATION MAP
 FILE NO. Jyl-251

+ Denotes location of well on United States Topographic Maps, scale 1 to 62,500, latitude and longitude lines being represented by border lines as shown.

- Denotes one inch spaces on border line of original tracing.



STATE OF WEST VIRGINIA
DEPARTMENT OF MINES
OIL AND GAS DIVISION 27

Quadrangle West Union
Permit No. 251 - Tyl.

WELL RECORD

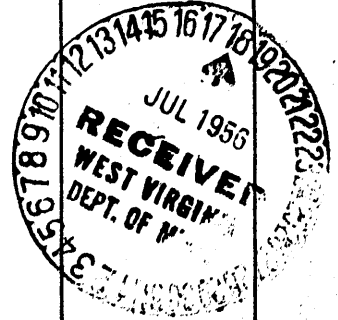
Oil or Gas Well Dry Oil
(KIND)

Company Ralph C. Halbert
Address 23 Main St., Evansville, Ind.
Farm Saphrona Weekley Acres 18
Location (waters) Indian Creek
Well No. 2 Elev. 802.36
District McElroy County Tyler
The surface of tract is owned in fee by A.B. & Eliz Gatrell
Address Middlebourne
Mineral rights are owned by C.B. Booher 1/2, Harry 1/6 Weekley 2/6 & Myrtle Weekley Marks
Address Parkersburg, W. Va
Drilling commenced April 27, 1956
Drilling completed June 23, 1956
Date Shot From _____ To _____
With _____
Open Flow /10ths Water in _____ Inch
/10ths Merc. in _____ Inch
Volume _____ Cu. Ft.
Rock Pressure None lbs. _____ hrs.
Oil None bbls., 1st 24 hrs.
Fresh water None feet _____ feet
Salt water None feet _____ feet

Casing and Tubing	Used in Drilling	Left in Well	Packers
Size			Kind of Packer
16			
13			
10	310' 7"	None	Size of
8 1/2	1048'	None	
6 1/2	1690'	1690'	Depth set
5 3/16			
3			Perf. top
2			Perf. bottom
Liners Used			Perf. top
			Perf. bottom

CASING CEMENTED NO SIZE _____ No. Ft. _____ Date _____
COAL WAS ENCOUNTERED AT NO FEET _____ INCHES
_____ FEET _____ INCHES FEET _____ INCHES
_____ FEET _____ INCHES FEET _____ INCHES

Formation	Color	Hard or Soft	Top	Bottom	Oil, Gas or Water	Depth Found	Remarks
Soil			0	25	Hole Full of Water	50'	S.L.M. 310' 7" of 10" Casing
Slate & Lime			25	75			
Lime		Hard	75	90			
Blue Slate			90	110			
Black Slate & Shells			110	118			
Broken Sand			118	125			
Red Rock			125	131			
Blue Slate & Shells			131	142			
Red Rock			142	160			
Blue Slate & Shells			160	190			
Red Rock			190	217			
Slate & Lime			217	224			
Red Rock			224	240			
Slate & Lime			240	252			
Sand		Hard	252	318			
Red Rock			318	335			
Lime			335	353			
Red Rock			353	365			
Lime		Hard	365	405			
Blue Slate & Shells			405	422			
Lime		Hard	422	435			
Sand		Medium	435	463			
Gray Slate & Shells		Soft	463	525			
Black Slate & Shells			525	535			
Brown Lime		Hard	535	545			
Slate & Lime Shells			545	600			
Sand		Hard	600	630			
Brown Lime		Hard	630	640			
Slate & Shells			640	650			
Red Rock			650	665			
Gray Slate & Shells			665	695			
Red Rock			695	780			
Lime & Shells			780	785			



Formation	Color	Hard or Soft	Top \pm	Bottom	Oil, Gas or Water	Depth Found	Remarks
Slate & Shells			785	804			
Gray Lime		Hard	804	822			
Black Slate & Shells			822	839			
Lime			839	850			
Sand		Hard	850	875			
Gray Slate			875	880			
Red Rock			880	900			
Lime Shell			900	908			
Slate			908	915			
Lime			915	921			
Black Slate			921	940			
Gray Lime		Hard	940	949			
Slate & Shells			949	990			
White Sand		Hard	990	1002			
White Sand			1002	1020			
Black Slate			1020	1025			
Gray Sand		Hard	1025	1032			
Slate & Shells			1032	1040			
Sand			1040	1055			S.L.M.
Red Rock			1055	1065			
Slate & Shells			1065	1150			
White Sand		Hard	1150	1199			
Slate			1199	1210			
Sand			1210	1270			
Slate			1270	1300			
Gray Lime		Hard	1300	1325			
Black Slate & Shell			1325	1365			
Sand			1365	1372			
Slate			1372	1418			
Sand			1418	1432			
Slate			1432	1464			
Lime			1464	1476			
Slate			1476	1484			
Lime			1484	1502			
Slate & Shells			1502	1521			
Lime			1521	1530			
Sand		Hard	1530	1588	1762		
Black Slate			1588	1590	902		
Sand			1590	1604	960		
Slate			1604	1623			
Lime			1623	1636			
Black Slate			1636	1668			
Red Rock			1668	1672			
Slate & Shells			1672	1685			
Red Rock			1685	1702			
Maxon Sand			1702	1716			S.L.M.
Shale Black			1716	1735			
Lime			1735	1745			
Slate			1745	1762			
Lime			1762	1770			
Lime			1770	1850			
Sand			1850	1943			
T.D.			1943		S.S.O. Cored Big to 1943'	1905' Injun Sand	S.L.M. from 1918'

Date July 17, 1956

APPROVED Ralph C. Halbert, Owner

By Dick J. Buss, Receiver
(Title) Attorney