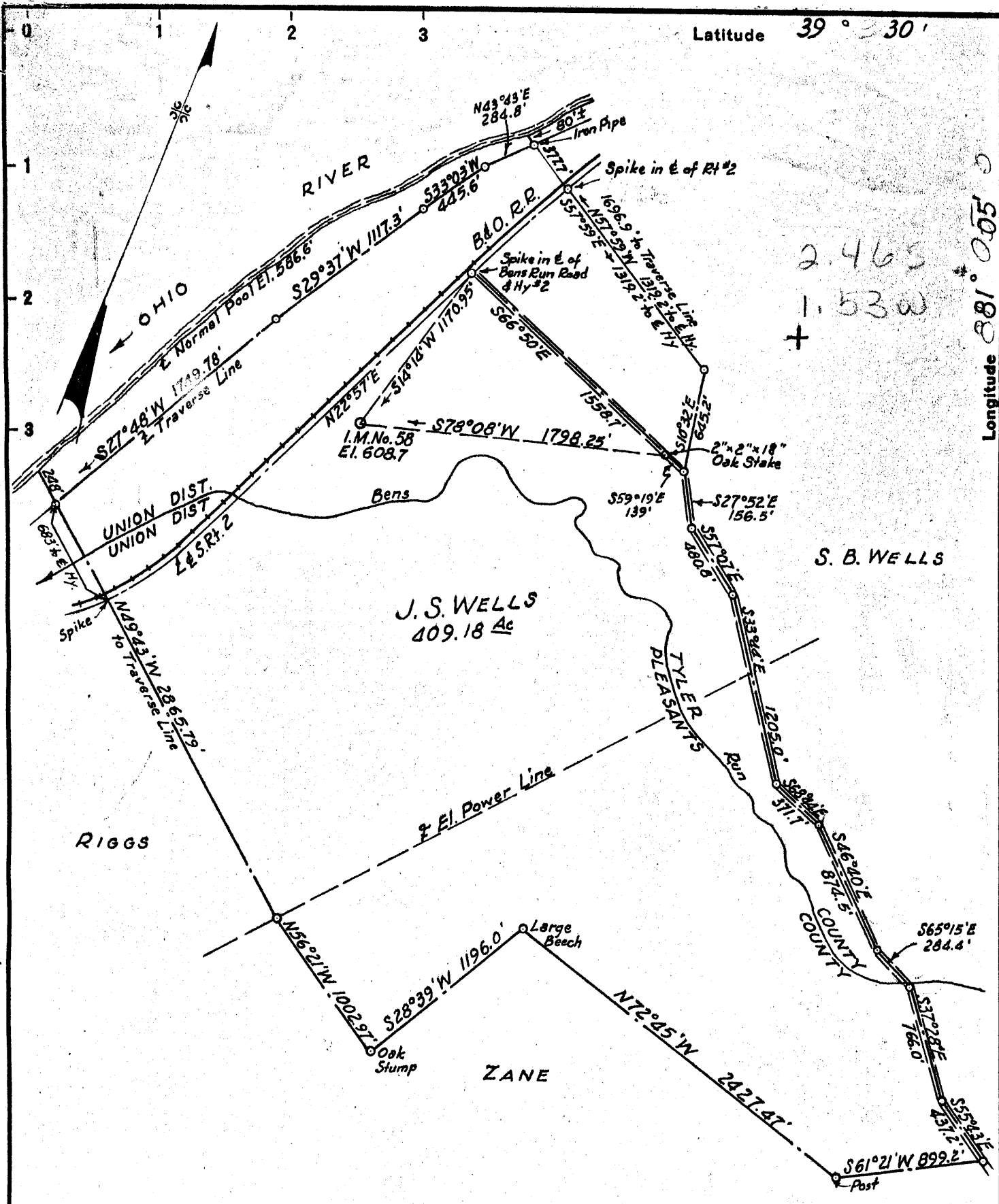


100

Latitude 39° 30'

Longitude 81° 05'



2.465  
+  
1.530

- New Location..
- Drill Deeper.....
- Abandonment.....

Company GEORGE SCHOONMAKER  
 Address St. Marys, W. Va.  
 Farm J.S. WELLS  
 Tract \_\_\_\_\_ Acres 409.18 Lease No. \_\_\_\_\_  
 Well (Farm) No. I.M. # 58 Serial No. \_\_\_\_\_  
 Elevation (Spirit Level) 608.7  
 Quadrangle ST. MARYS AC  
 County Tyler District Union  
 Engineer LELAND G. MERRILL  
 Engineer's Registration No. 152  
 File No. \_\_\_\_\_ Drawing No. \_\_\_\_\_  
 Date AUG. 17, 1956 Scale 1"=800'

STATE OF WEST VIRGINIA  
 DEPARTMENT OF MINES  
 OIL AND GAS DIVISION  
 CHARLESTON

**WELL LOCATION MAP**  
 FILE NO. JYL-253

+ Denotes location of well on United States Topographic Maps, scale 1 to 62,500, latitude and longitude lines being represented by border lines as shown.

- Denotes one inch spaces on border line of original tracing.

G. Merrill



STATE OF WEST VIRGINIA  
DEPARTMENT OF MINES  
OIL AND GAS DIVISION

Quadrangle St Marys

Permit No. TYL-253

WELL RECORD

Oil or Gas Well Oil

(KIND)

Company C. G. Schoonmaker  
Address 702 Second St. St. Marys, W. Va.  
Farm J. S. Wells Acres 409  
Location (waters) Bens Run  
Well No. IM-58 Elev. 608.7  
District Union County Tyler  
The surface of tract is owned in fee by Earl Wells  
Address Bens Run, W. Va.  
Mineral rights are owned by L. W. Wells & Earl Wells  
Address St. Marys, W. Va.  
Drilling commenced Oct. 19, 1956  
Drilling completed Oct. 27, 1956  
Date Shot 11/12/56 From 1197 To 1247  
With 490 qts. Nitro-Glycerine  
Open Flow /10ths Water in \_\_\_\_\_ Inch  
/10ths Merc. in \_\_\_\_\_ Inch  
Volume \_\_\_\_\_ Cu. Ft.  
Rock Pressure \_\_\_\_\_ lbs. \_\_\_\_\_ hrs.  
Oil \_\_\_\_\_ bbls., 1st 24 hrs.  
Fresh water \_\_\_\_\_ feet \_\_\_\_\_ feet  
Salt water \_\_\_\_\_ feet \_\_\_\_\_ feet

Casing and Tubing	Used in Drilling	Left in Well	Packers
Size			
16			Kind of Packer
13			
10			Size of
8 1/4			
6 1/2			Depth set
5 3/16 <u>5 1/2</u>		<u>1189</u>	
3			Perf. top
2			Perf. bottom
Liners Used			Perf. top
			Perf. bottom

CASING CEMENTED Yes SIZE 5 1/2 No. Ft. 1189 Date \_\_\_\_\_

COAL WAS ENCOUNTERED AT \_\_\_\_\_ FEET \_\_\_\_\_ INCHES  
\_\_\_\_\_ FEET \_\_\_\_\_ INCHES \_\_\_\_\_ FEET \_\_\_\_\_ INCHES  
\_\_\_\_\_ FEET \_\_\_\_\_ INCHES \_\_\_\_\_ FEET \_\_\_\_\_ INCHES

Formation	Color	Hard or Soft	Top	Bottom	Oil, Gas or Water	Depth Found	Remarks
Shale			0	325			
Shale & Sand			325	535			
Lime & Shale			535	620			
Sand & Shale			620	640			
Shale-Lime & Sand			640	660			
Shale			660	712			
Shale, Lime & Sand			712	797			
Sand			797	860			
Lime			860	864			
Shale, Lime & Sand			864	1021			
Sand			1021	1025			
Sand & Shale			1025	1034			
Sand			1034	1063			
Shale, Lime & Sand			1063	1189			
Sand			1189	1191			
Shale			1191	1193			
✓ Sand (S.C.R.)			1193	1247			
Total Depth				1247			

