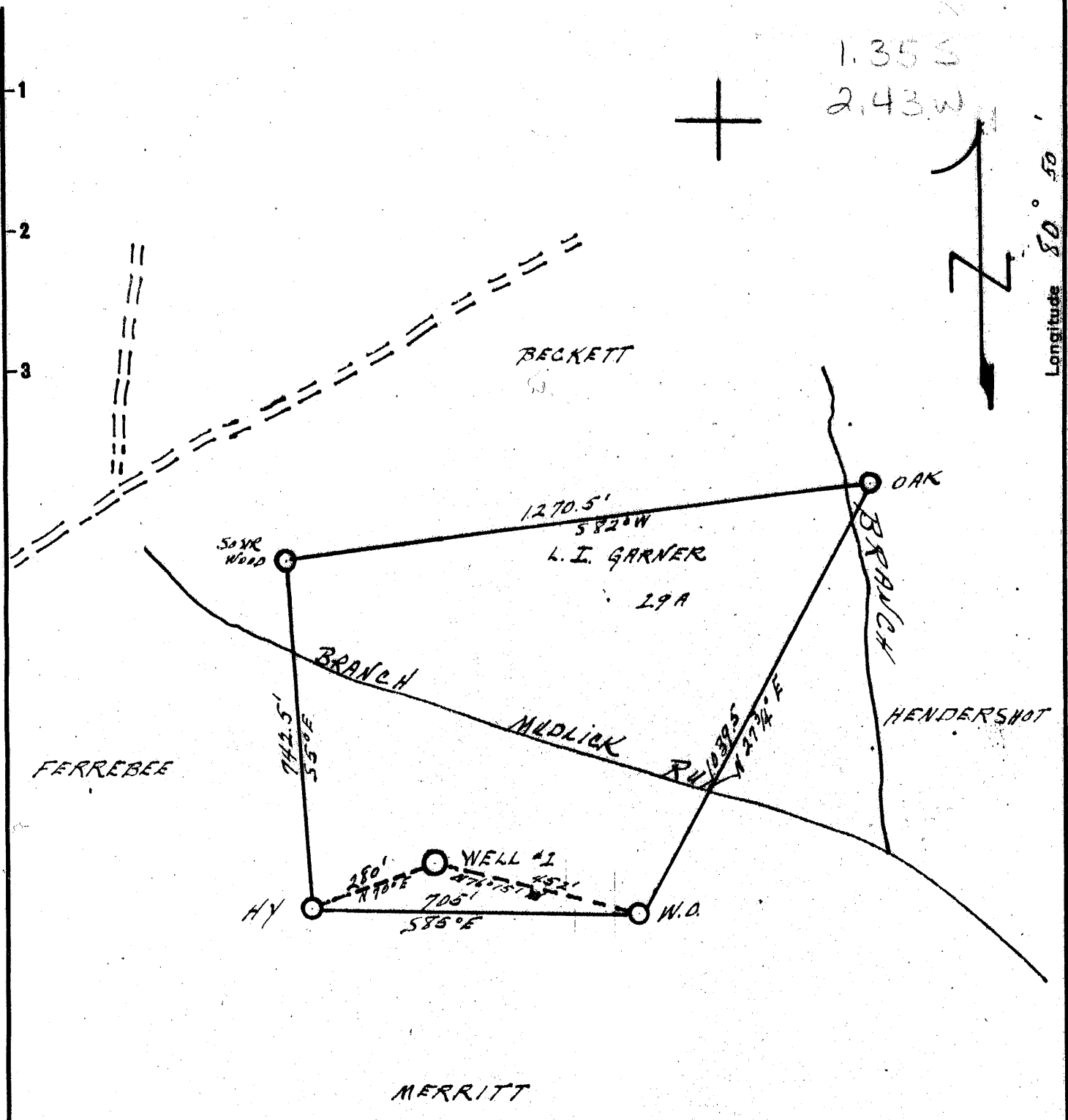


1 2 3

Latitude 39° 20'

1.35 S
2.43 W

Longitude 80° 50'



New Location..
 Drill Deeper.....
 Abandonment.....

Company W. H. MOSSOR
 Address HARRISVILLE, W. VA.
 Farm L. I. GARNER
 Tract _____ Acres 29 Lease No. _____
 Well (Farm) No. 1 Serial No. _____
 Elevation (Spirit Level) 1100
 Quadrangle WEST UNION SC
 County TYLER District CENTERVILLE
 Engineer Donald W. Morris
 BY: J. F. DEEM
 Engineer's Registration No. 1653
 File No. _____ Drawing No. _____
 Date NOV 25, 1956 Scale 1" = 300'

STATE OF WEST VIRGINIA
 DEPARTMENT OF MINES
 OIL AND GAS DIVISION
 CHARLESTON

WELL LOCATION MAP
 FILE NO. JYL-258

+ Denotes location of well on United States Topographic Maps, scale 1 to 62,500, latitude and longitude lines being represented by border lines as shown.
 - Denotes one inch spaces on border line of original tracing.



STATE OF WEST VIRGINIA
DEPARTMENT OF MINES
OIL AND GAS DIVISION 8

West Union

WELL RECORD

Permit No. Tyler 258

Oil or Gas Well Gas

(KIND)

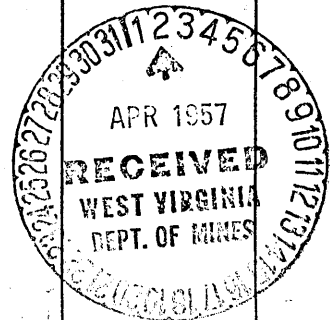
Company Garner Oil & Gas Co. (W.H. Johnson)
Address Harrisville, W. Va.
Farm Launa I. Garner Acres 72
Location (waters) Mud Lick Run
Well No. 1 Elev. 1100
District Centerville County Tyler
The surface of tract is owned in fee by Launa I. Garner
104-14th. St. S. W. Address Massalin, O.
Mineral rights are owned by same
1/2 C.O. Dennison Ex 985 Address Clarksburg, W. Va.
Drilling commenced Jan. 8, 1957
Drilling completed Mar. 27, 1957
Date Shot none From To
With
Open Flow 10/10ths Water in 5 1/2" Inch
 /10ths Merc. in Inch
Volume 800,000 Cu. Ft.
Rock Pressure 100 lbs. 36 hrs.
Oil none bbls., 1st 24 hrs.
Fresh water feet feet
Salt water 640 feet 1565 & 1610 feet

Casing and Tubing	Used in Drilling	Left in Well	Packers
Size			
16	12	12	Kind of Packer
13			
10	681		Size of
8 1/4	1257		
6 5/8	1637		Depth set
5 3/16	1998	1998	17 lb. pipe
3			Perf. top
2			Perf. bottom
Liners Used			Perf. top
			Perf. bottom

CASING CEMENTED SIZE No. Ft. Date

COAL WAS ENCOUNTERED AT FEET INCHES
 FEET INCHES FEET INCHES
 FEET INCHES FEET INCHES

Formation	Color	Hard or Soft	Top	Bottom	Oil, Gas or Water	Depth Found	Remarks
Soil	red		0	40			
Slate			40	50			
Sand			50	85			
Slate			85	105			
Sand			105	175			
Slate Red Rock shells			175	200			
Red Rock			200	205			
Slate			205	220			
Red Rock			220	225			
Slate & Shells			225	245			
Red Rock			245	265			
Slate			265	315			
Red Rock			315	335			
Slate			335	345			
Red Rock			345	405			
Slate			405	410			
Red Rock			410	442			
Slate			442	460			
Red Rock			460	475			
Slate			475	510			
Red Rock			510	542			
Lime			542	557			
Red Rock			557	615			
Sand			615	660	Water 640-660		2 Bb. per hour
Slate			660	681			
Lime			681	688			
Slate			688	695			
Red Rock Shelly			695	720			
Lime			720	745			
Slate	Black		745	750			
Lime	Black		750	778			
Slate & Shells			778	880			
Red Rock			880	885			
Sand		Hard	885	890			
Red Rock			890	958			
Lime Shell			958	985			
Red Rock			985	1000			



Formation	Color	Hard or Soft	Top	Bottom	Oil, Gas or Water	Depth Found	Remarks
Lime		hard	1000	1008			
Slate	White		1008	1045			
Slate	Black		1045	1060			
Slate	White		1060	1085			
Red Rock			1085	1045			
Slate	Black		1155	1165			
Slate	White		1165	1170			
Shell			1170	1180			
Slate	White		1180	1225			
Sand			1225	1235			
Slate	Black		1235	1245			
✓ Dunkard Sand			1245	1280			
Slate	White		1280	1290			
Lime			1290	1330			
Slate & Shells			1330	1370			
Slate Black & Shells			1370	1400			
Sand			1400	1440			
Slate			1440	1470			
Lime			1470	1480			
✓ Salt Sand			1480	1510			
Slate			1510	1512			
Sand			1512	1532			
Slate	Black		1532	1545	Water	1565- 1583	6 Bb. per
✓ Sand 2Nd.	Salt		1545	1655	Water	1610-1618	4 Bb per hr.
Lime	Black		1655	1660	Casing run	1610	Pull and drill to 1637
Slate	Black		1660	1668			
Shale	Black		1668	1695			
✓ Sand 3rd.	Salt		1695	1715			
Slate	Black		1715	1728			
Lime	Black	B	1728	1735			
Sand		Hard	1735	1755			
Slate & Shells	Black	Hard	1755	1798			
Sand			1798	1845			
Slate	Black		1845	1880			
Lime			1880	1890			
✓ Sand Maxon			1890	1940	gas	1918-1924	3/10 W. 1" Show of water in Maxon sand about 3 gal per hr.
Shale			1940	1946			
✓ Kittle Lime			1946	1965			
Slate	Gray		1965	1967			
Lime			1967	1976			
✓ Slate Pencil Cave			1976	1980			
✓ Big Lime			1980	2050			
✓ Keener Sand			2050	2075			
✓ Injun			2075		Used bit	4-29/32	bit to gauge to drill in 17# pipe
					Gas	2061 - 2075	
					10/10 W	5 1/2" casing	
							800,000 cu. ft.

Date Mar. 28, 19 57

APPROVED Garner Oil & Gas Co., Owner

By W. H. Morgan