

Latitude 39° 20'

145 S
2.22 W

Longitude 80° 50'

HENDERSHOT

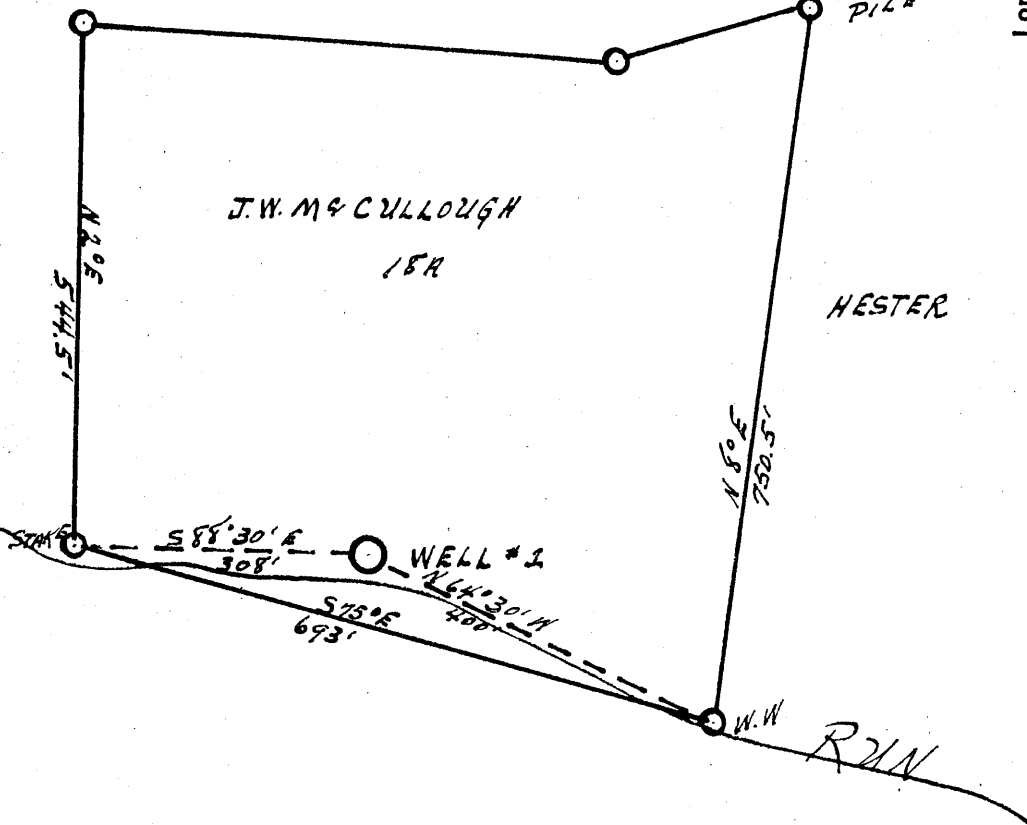
STONE PILE

J.W. McCULLOUGH
18A

HESTER

FERREBEE

MUDLICK



LOVEALL

New Location...
 Drill Deeper.....
 Abandonment.....

Company W. H. MOSSOR
 Address HARRISVILLE, W. VA.
 Farm J. W. McCULLOUGH
 Tract _____ Acres 18 Lease No. _____
 Well (Farm) No. 1 Serial No. _____
 Elevation (Spirit Level) 850
 Quadrangle WEST UNION - S.C.
 County TYLER District CENTERVILLE
 Engineer Donald W. Morris
 BY: J. F. DEEM
 Engineer's Registration No. 1653
 File No. _____ Drawing No. _____
 Date MAR 29, 1957 Scale 1" = 200'

STATE OF WEST VIRGINIA
 DEPARTMENT OF MINES
 OIL AND GAS DIVISION
 CHARLESTON

WELL LOCATION MAP
 FILE NO. JYL-260

+ Denotes location of well on United States Topographic Maps, scale 1 to 62,500, latitude and longitude lines being represented by border lines as shown.

- Denotes one inch spaces on border line of original tracing.

6-6 90



STATE OF WEST VIRGINIA
DEPARTMENT OF MINES
OIL AND GAS DIVISION

Quadrangle West Union
Permit No. Tyl. 260

WELL RECORD

Oil or Gas Well Gas
(KIND)

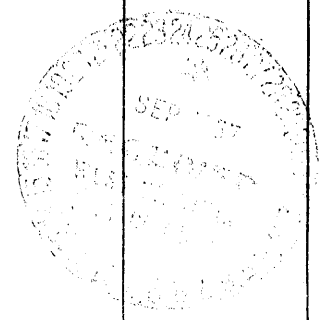
Company W. H. Mossor
Address Harrisville, W. Va.
Farm J.W. McCollough Acres 99 1/2
Location (waters) Mud Lick Run
Well No. 1 Elev. 850'
District Centerville County Tyler
The surface of tract is owned in fee by J.W. McCollough
Address Central Station.
Mineral rights are owned by J.W. McCollough And
Hendershot Heirs Address Central Station
Drilling commenced Aug. 19, 1957
Drilling completed Sept. 19, 1957
Date Shot no From _____ To _____

Casing and Tubing	Used in Drilling	Left in Well	Packers
Size	8	8	Kind of Packer
16			
13			
10	283	283	Size of
8 1/4	962		
6 1/2	1326	1326	Depth set
5 3/16	1718	1718	
3			Perf. top
2			Perf. bottom
Liners Used			Perf. top
			Perf. bottom

With _____
Open Flow 80/10ths Water in 2" Inch
/10ths Merc. in _____ Inch
Volume 375,000 Cu. Ft.
Rock Pressure 300 lbs. 1 hrs.
Oil 2 Gal over Sunday bbls. 1st 24 hrs.
Fresh water 20' feet 345-395 feet
Salt water 966-1000 feet 1255 hole full feet

CASING CEMENTED _____ SIZE _____ No. Ft. _____ Date _____
COAL WAS ENCOUNTERED AT _____ FEET _____ INCHES
_____ FEET _____ INCHES FEET _____ INCHES
_____ FEET _____ INCHES FEET _____ INCHES

Formation	Color	Hard or Soft	Top	Bottom	Oil, Gas or Water	Depth Found	Remarks
Clay			0	82 8			
Slate			8	30			
Red Rock			30	45			water 20 ft. 20 Bbls. per Hr.
Shell			45	60			
Slate & R.R.			60	125			
Shell			125	135			
Slate			135	145			
Red Rock			145	188			
Slate	Blue		188	230			
Shell			230	238			
Red Rock			238	245			
Slate			245	247			
Red Rock			247	258			
Lime Shell			258	270			
Red Rock			270	280			
Lime			280	295			
Red Rock			295	345			
Sand			345	395			Water 345-395 10 Gal. per Hr.
Slate			395	417			
Red Rock			417	435			
Lime & Slate			435	460			
Lime	Black		460	500			
Slate & Red Rock			500	505			
Slate & Shells			505	595			
Red Rock			595	670			
Lime			670	695			
Red Rock			695	707			
Lime			707	715			
Slate & Shells			715	775			
Slate	Black		775	790			
Slate	White		790	798			
Red Rock			798	845			
Lime & Red Rock			845	862			
Sand Little Dunkard			862	872			
Slate	Black		872	880			



Formation	Color	Hard or Soft	Top	Bottom	Oil, Gas or Water	Depth Found	Remarks
Slate	White		880	925			
Slate	Black		925	938			
Sand b.D	Dark		938	963			
Slate	Black		963	966			
Sand	White		966	1000	Water 10	gal per hr.	
Slate			1000	1030			
Lime & Slate	White		1030	1105			
Slate	Black		1105	1120			
Lime Shell	Gritty		1120	1135			
Sand			1135	1160			
Slate	Black		1160	1220			
Lime			1220	1245			
Sand 1st.	Salt		1245	1365	Water 1255	hole full	
Slate	Black		1365	1392			
Shell	Gritty Black		1392	1405			
Slate	Black		1405	1455			
Sand			1455	1462			
Slate & Sell	Black		1462	1480			
Slate	White		1480	1505			
Sand	Black		1505	1525			
Sand 2nd.	Salt White		1525	1555			
Slate	Black		1555	1570			
Lime	Black Gritty		1570	1580			
Slate	Black		1580	1592			
Lime & Sand			1592	1605			
Slate	Black		1605	1625			
Sand & Lime			1625	1643			
Sand Maxon	White		1643	1652			
Slate	Black	Soft	1652	1656			
Lime Little			1656	1672			
Slate			1672	1682			
Big Lime	Dark		1682	1700			
Lime	White	Hard	1700	1765	Gas 1760-1762	30/10 W. 2"	
Sand					Rock pressure 300	-1 hour	
					250,000	cu. ft.	
Sand			1765	1807	Oil show 1800-1807		
Lime	Black	Hard	1807	1818			
Sand			1818	1826			
Slate	Black		1826	1830			
Sand	White		1830	1881	Gas 1855-1864	10/10 Water 2"	
Slate			1881	1915	at 1860		
Total Depth			1915		All gas tested 128/10	W. 2"	
					at 1790		
					All gas tested 117/10	W 2"	
					at 1864		

Date Sept. 24, 19 57

APPROVED W. H. Masson, Owner

By Partner
(Title)