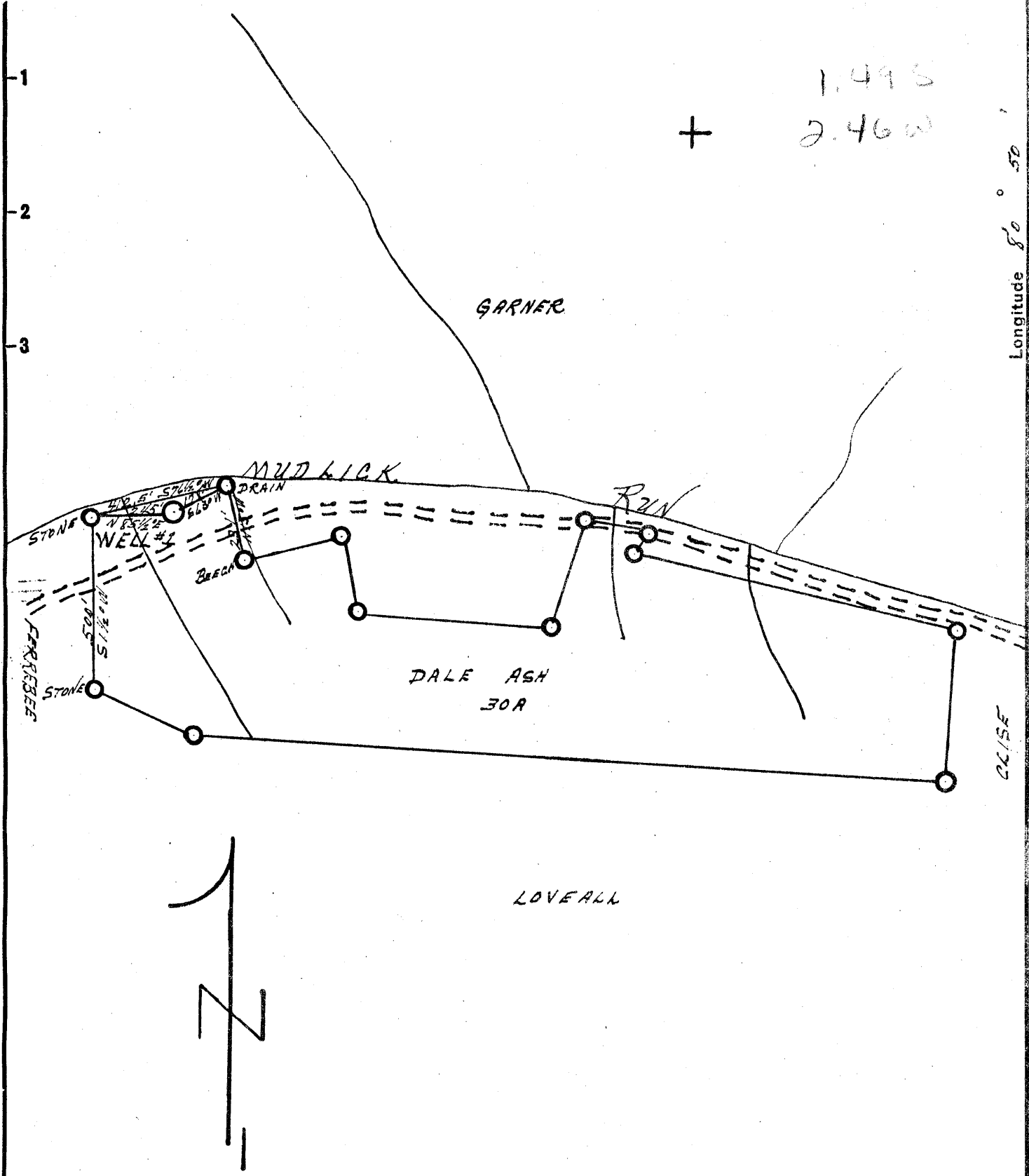


Latitude 39 20

Longitude 80 50

1.495
+ 2.460



New Location..
 Drill Deeper.....
 Abandonment.....

Company W. H. MOSSOR
 Address HARRISVILLE, W. VA
 Farm DALE ASH
 Tract _____ Acres 30A Lease No. _____
 Well (Farm) No. 1 Serial No. _____
 Elevation (Spirit Level) 870'
 Quadrangle WEST UNION SC
 County TYLER District CENTERVILLE
 Engineer Donald W. Morris
 BY: W. F. DEEM
 Engineer's Registration No. 1653
 File No. _____ Drawing No. _____
 Date APR 8, 1957 Scale 1" = 400'

STATE OF WEST VIRGINIA
 DEPARTMENT OF MINES
 OIL AND GAS DIVISION
 CHARLESTON

WELL LOCATION MAP
 FILE NO. JYL-261

+ Denotes location of well on United States Topographic Maps, scale 1 to 62,500, latitude and longitude lines being represented by border lines as shown.
 - Denotes one inch spaces on border line of original tracing.



STATE OF WEST VIRGINIA
DEPARTMENT OF MINES
OIL AND GAS DIVISION 5

Quadrangle West Union

WELL RECORD

Permit No. Tyler 261

Oil or Gas Well gas & oil
(KIND)

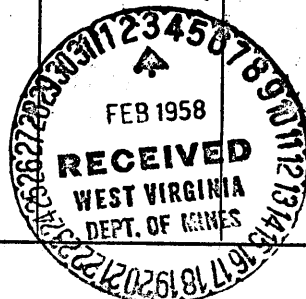
Company Ash Oil & Gas Co. By W. H. Kesser
Address Harrisonville, W. Va.
Farm Dale Ash Acres 30
Location (waters) Bud Lick Run
Well No. 1 Elev. 870
District Centerville County Tyler
The surface of tract is owned in fee by Dale Ash
Address Central Station
Mineral rights are owned by Dale Ash
Address Central Station
Drilling commenced May 4, 1957
Drilling completed Nov. 4, 1957
Date Shot no From _____ To _____
With _____
Open Flow 46 /10ths Water in 1 Inch
/10ths Merc. in _____ Inch
Volume 77,000 Cu. Ft.
Rock Pressure 38 lbs. 48 hrs.
Oil small bbls., 1st 24 hrs.
Fresh water 35 feet _____ feet
Salt water 1325 feet _____ feet

Casing and Tubing	Used in Drilling	Left in Well	Packers
Size			
16			Kind of Packer
13			
10	60		Size of
8 1/4	300		
6 1/2	880	filled	Depth set <u>300 ft.</u>
5 3/16	1750	1750	
3			Perf. top
2			Perf. bottom
Liners Used			Perf. top
			Perf. bottom

CASING CEMENTED _____ SIZE _____ No. Ft. _____ Date _____

COAL WAS ENCOUNTERED AT _____ FEET _____ INCHES
_____ FEET _____ INCHES _____ FEET _____ INCHES
_____ FEET _____ INCHES _____ FEET _____ INCHES

Formation	Color	Hard or Soft	Top	Bottom	Oil, Gas or Water	Depth Found	Remarks
Soil			0	4			
Brown Slate			4	35			
Dark Slate			35	76			
Red Rock			76	80			
Slate	Grey		80	170			
Red Slate			170	192			
Grey Slate			192	220			
Red Rock			220	245			
Grey Slate			245	280			
Red Rock			280	295			
Lime			295	309			
Red Rock			309	318			
Grey Slate			318	394			
Dunkard Sand			394	423			
Grey shale			423	440			
Sand			440	457			
Grey shale			457	462			
Lime	white		462	472			
White & Limey			472	487			
Slate Limey			487	545			
Lime	Black		545	550			
Big Red	Big Red		550	648			
Big Red			648	684			
Limey Shale			684	766			
Lime			766	770			
Grey Slate			770	835			
Sand			835	848			
Red Rock			848	854			
Brown Slate			854	893			
Lime			893	900			
Shale	Grey		900	1004			
Sand			1004	1044			
Shale			1044	1157			



Formation	Color	Hard or Soft	Top	Bottom	Oil, Gas or Water	Depth Found	Remarks
✓ 1 Salt Sand			1157	1222			
Shale			1222	1258			
✓ 2 nd Salt Sand			1258	1303			
Shale			1303	1309			
✓ 3 rd. Salt Sand			1309	1418	water	1325	
Shale	black		1418	1500			
Sand			1500	1520			
Shale			1520	1525			
Sand			1525	1616			
Shale			1616	1645			
Sand			1645	1662			
Shale			1662	1670			
Sand			16670	1700			
Shale			1700	1712			
✓ Little Lime			1712	1724			
Slate			1724	1745			
✓ Big Lime			1745	1812			
✓ Keener Sand			1812	1835			
Slate			1835	1837	Gas 1817-1832 46/10 W 1"		
✓ Injun Sand			1837	1925	Smell of oil 1858		
Slate			1925	1930	Gas 1886-1895 10/10 W 1"		
✓ Squaw Sand			1930	1940			
Slate			1940				
Total Depth			1965		17 46 870 875		

Date Jan. 30, 19 58

APPROVED Ash Oil & Gas Co., Owner

By W. H. Mosser, Partner
(Title)