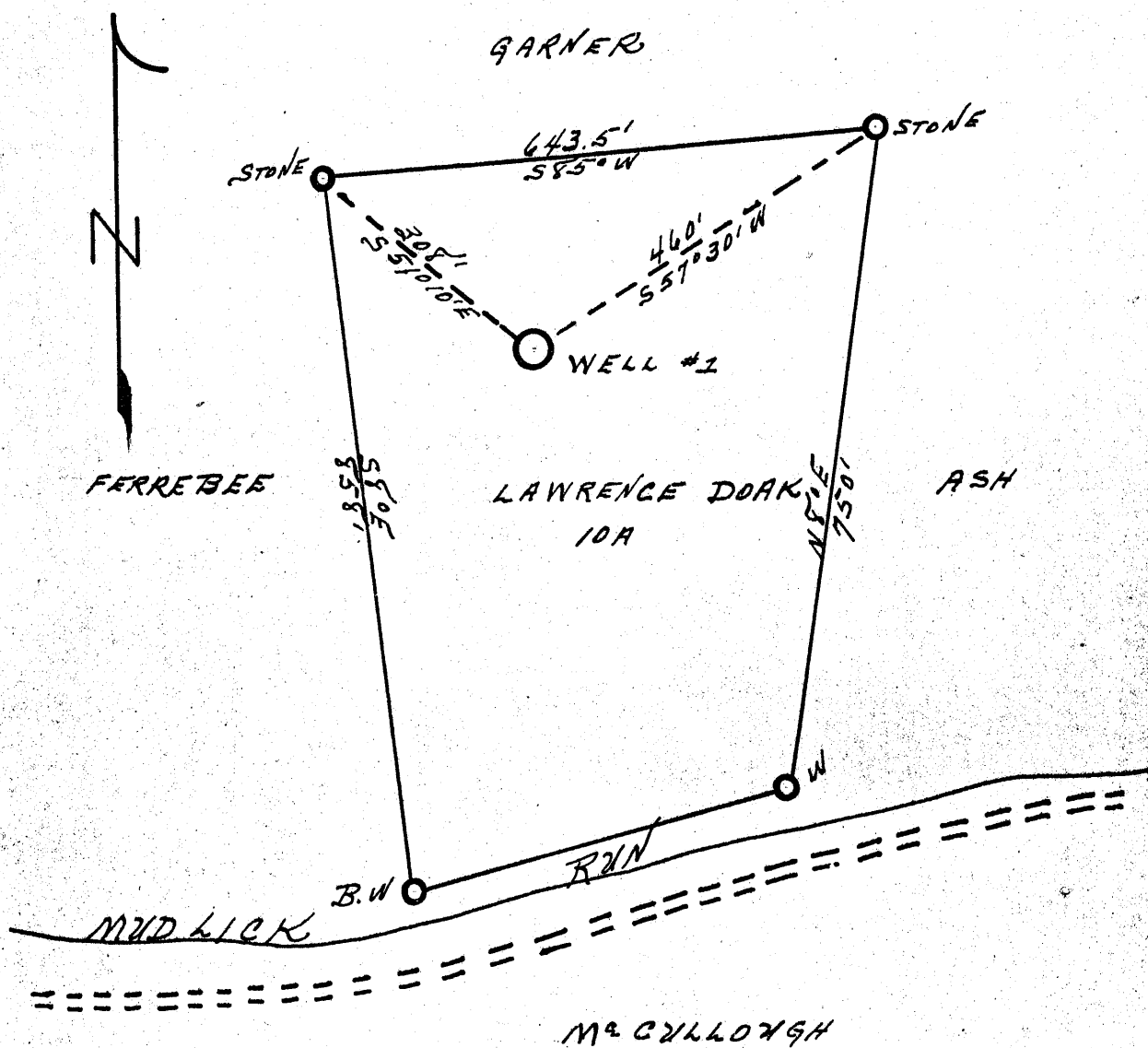


Latitude 39° 20'

1365
2.420

Longitude 80° 50'



New Location...
 Drill Deeper.....
 Abandonment.....

plugged 7/18/1959

Company W. H. MOSSOR
 Address HARRISVILLE, W. VA.
 Farm LAWRENCE DOAK
 Tract _____ Acres 20 Lease No. _____
 Well (Farm) No. 1 Serial No. _____
 Elevation (Spirit Level) 1100
 Quadrangle WEST UNION - S.C.
 County TYLER District CENTERVILLE
 Engineer Donald W. Morris
 BY: J. F. DEEM
 Engineer's Registration No. 1653
 File No. _____ Drawing No. _____
 Date MAY 18, 1957 Scale 1" = 200'

STATE OF WEST VIRGINIA
 DEPARTMENT OF MINES
 OIL AND GAS DIVISION
 CHARLESTON

WELL LOCATION MAP
 FILE NO. JYL-263

+ Denotes location of well on United States Topographic Maps, scale 1 to 62,500, latitude and longitude lines being represented by border lines as shown.

- Denotes one inch spaces on border line of original tracing.



STATE OF WEST VIRGINIA
DEPARTMENT OF MINES
OIL AND GAS DIVISION 7

Quadrangle. West Union
Permit No. Tyl - a 263

WELL RECORD

Oil or Gas Well Gas
(KIND)

Company Doak Oil & Gas Co. (W.H. MOSSOR)
Address Harrisville, W. Va.
Farm Lawrence Doak Acres 10
Location (waters) Mud Lick Run
Well No. 1 Elev. 1100
District Centerville County Tyler
The surface of tract is owned in ~~X~~ by J.W. McCollough
Address Central Station
Mineral rights are owned by Lawrence Doak
Address Pennsboro, W. Va.
Drilling commenced June 3, 1957
Drilling completed July 15, 1957
Date Shot none From _____ To _____
With _____
Open Flow 70 /10ths Water in 2 Inch
_____ /10ths Merc. in _____ Inch
Volume 400,000 Cu. Ft.
Rock Pressure 80 lbs. 48 hrs.
Oil _____ bbls., 1st 24 hrs.
Fresh water 615-635 feet _____ feet
Salt water 1535-1550 feet _____ feet

Casing and Tubing	Used in Drilling	Left in Well	Packers
Size			
16	12'	12'	Kind of Packer
18			none
10	653	none	Size of
8 3/4	1212	none	
6 3/4	1605	none	Depth set
5 3/16	1979	1979	
3			Perf. top
2		2160	Perf. bottom
Liners Used	none		Perf. top
			Perf. bottom

CASING CEMENTED no SIZE _____ No. Ft. _____ Date _____
COAL WAS ENCOUNTERED AT none FEET _____ INCHES _____
FEET _____ INCHES FEET _____ INCHES
FEET _____ INCHES FEET _____ INCHES

Formation	Color	Hard or Soft	Top	Bottom	Oil, Gas or Water	Depth Found	Remarks
Red Rock	red		0	10			
Sand			10	50			
Red Rock			50	65			
Blue Slate			65	75			
Sand			75	135			
Slate			135	180			
Red Rock			180	195			
Slate			195	215			
Red Rock			215	240			
Blue Slate			240	295			
Red Rock			295	305			
Slate			305	315			
Red Rock			315	415			
Slate			415	440			
Red Rock			440	455			
Shells & Slate			455	490			
Red Rock & Shells			490	590			
Sand			590	635			
Slate	White		635	640	Water 615-635	4 Bbls. per hr.	
Lime			640	645			
Sand			645	665			
Slate			665	675			
Red Rock			675	705			
Slate & Shells			705	745			
Lime	Black	Hard	745	755			
Slate & Shells			755	870			
Red Rock			870	945			
Slate			945	957			
Red Rock			957	975			
Lime			975	983			
Slate	White		983	1020			
Slate	Black		1020	1045			
Lime Gritty			1045	1075			
Red Rock			1075	1122			
Slate	Blue		1122	1175			
Slate	Black		1175	1210			
Sand			1210	1246			
Slate	White		1246	1255	Steel line run 1216 1/2'		



Formation	Color	Hard or Soft	Top //	Bottom	Oil, Gas or Water	Depth Found	Remarks
Sand			1255	1290			
Slate & Shells			1290	1370			
Sand			1370	1415			
Slate			1415	1453			
Sand			1453	1505			
Sand	Black		1505	1518			
Sand			1518	1625	Water Salt	1535 - 1550'	
Sand			1625	1650			
Slate	Black		1650	1670			
Sand			1670	1683			
Slate	Black		1683	1703			
Sand			1703	1730			
Slate	Black		1730	1770			
Sand			1770	1820			
Slate	Black		1820	1865			
Maxon Sand			1865	1910	Gas 1880-1895	5/10 W. 1"	
Slate	Black		1910	1917	Water 1890-	1910 20 Gal. per Hr.	
Little Lime			1917	1940			
Pencil Cave			1940	1945			
Big Lime			1945	2025	Steel line run	1989'	
Keener Sand			2025	2055	Gas 2033-2045	70/10 W. 2"	
Injun Sand			2055	2152	Water 2033-	2065 20 Gal. per Hr.	
Slate	Black		2152				
Total Depth			2160				

Date Aug. 29, 1957

APPROVED Doak Oil & Gas Co., Owner

By JH Messer, Partner
(Title)