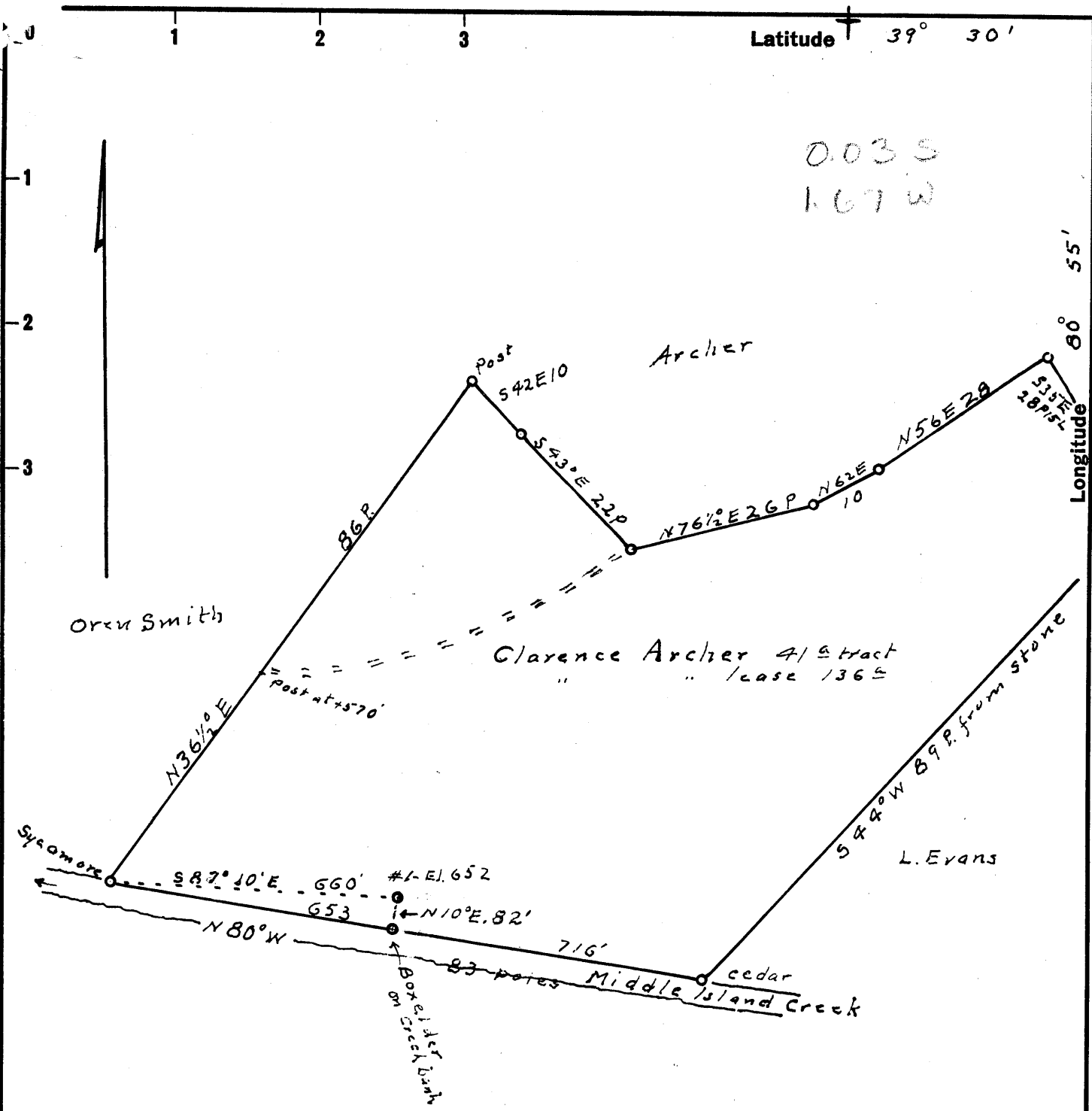


Latitude  $\dagger$  39° 30'

0035  
167W



New Location   
 Drill Deeper   
 Abandonment

Company Imperial Oil (Jim Spankard, Operator)  
 Address 504 Carlton House, Pittsburgh 19, Pa.  
 Farm Clarence Archer  
 Tract 41 1/2 Acres 136 Lease No. \_\_\_\_\_  
 Well (Farm) No. 1 Serial No. \_\_\_\_\_  
 Elevation (Spirit Level) 652  
 Quadrangle West Union - NW  
 County Tyler District Ellsworth  
 Engineer Robert R. Anderson  
O. Meredith  
 Engineer's Registration No. 296  
 File No. \_\_\_\_\_ Drawing No. \_\_\_\_\_  
 Date 11/7 1959 Scale 1 in = 20 Poles

STATE OF WEST VIRGINIA  
 DEPARTMENT OF MINES  
 OIL AND GAS DIVISION  
 CHARLESTON

WELL LOCATION MAP  
 FILE NO. T41-283

$\dagger$  Denotes location of well on United States Topographic Maps, scale 1 to 62,500, latitude and longitude lines being represented by border lines as shown.  
 — Denotes one inch spaces on border line of original tracing.



STATE OF WEST VIRGINIA  
DEPARTMENT OF MINES  
OIL AND GAS DIVISION

Quadrangle West Union

Permit No. TYL-283

**WELL RECORD**

Oil or Gas Well Dry Hole  
(KIND)

Company JIM SPANKARD  
Address 504 Carlton House, Pittsburgh 19, Pa.  
Farm Clarence Arther Acres 136  
Location (waters) \_\_\_\_\_  
Well No. One Elev. 652'  
District Ellsworth County Tyler  
The surface of tract is owned in fee by Clarence Archer  
Middlebourne, West Va Address \_\_\_\_\_  
Mineral rights are owned by Clarence Archer  
Address \_\_\_\_\_  
Drilling commenced February 24, 1960  
Drilling completed April 15, 1960  
Date Shot \_\_\_\_\_ From 2 To \_\_\_\_\_  
With \_\_\_\_\_  
Open Flow \_\_\_\_\_ /10ths Water in \_\_\_\_\_ Inch  
\_\_\_\_\_ /10ths Merc. in \_\_\_\_\_ Inch  
Volume 300,000 Cu. Ft.  
Rock Pressure 150 lbs. hrs.  
Oil two bbls., 1st 24 hrs.  
WELL ACIDIZED \_\_\_\_\_  
WELL FRACTURED Yes -

Casing and Tubing	Used in Drilling	Left in Well	Packers
Size			Kind of Packer _____
16			
13	37'		
10	252'		Size of _____
8 1/4	1137'		
6 1/2			Depth set _____
5 3/16	1744'	1744'	
3			Perf. top _____
2			Perf. bottom _____
Liners Used			Perf. top _____
			Perf. bottom _____

CASING CEMENTED 5 1/2" SIZE 1744 No. Ft. 4-3-60 Date

COAL WAS ENCOUNTERED AT \_\_\_\_\_ FEET \_\_\_\_\_ INCHES  
\_\_\_\_\_ FEET \_\_\_\_\_ INCHES \_\_\_\_\_ FEET \_\_\_\_\_ INCHES  
\_\_\_\_\_ FEET \_\_\_\_\_ INCHES \_\_\_\_\_ FEET \_\_\_\_\_ INCHES

RESULT AFTER TREATMENT Water - fractured into water  
ROCK PRESSURE AFTER TREATMENT \_\_\_\_\_  
Fresh Water \_\_\_\_\_ Feet Salt Water yes Feet 1580'

Formation	Color	Hard or Soft	Top	Bottom	Oil, Gas or Water	Depth	Remarks
mud			0	100			
mud & slate			100	200			
shells			200	250			
shells & slate q			250	475			
red rock			475	525			
slate & shells			525	625			
sand & lime			625	690			
shalte & shells			690	740			
lime			740	1000			
slate			1000	1018			
coal			1018	1019			
slate & mud			1019	1060			
slate			1060	1130			
<del>Maxton sand</del> <u>Salt sand</u>			1130	1176			
slate			1176	1200			
sand			1200	1206			
slate			1206	1318			
<del>sand</del> <u>Maxton</u>			1318	1360			
shale			1360	1435	slight show oil	1331'	
Big Lime			1435	1558	slight show gas	1350'	
Keener sand			1558	1568			
shale			1568	1572			
Big Injun Sand			1572	1744	gas & oil show		
TOTAL DEPTH				1744			

RECEIVED  
JAN 1961  
TYLER DISTRICT

1435  
652  
783