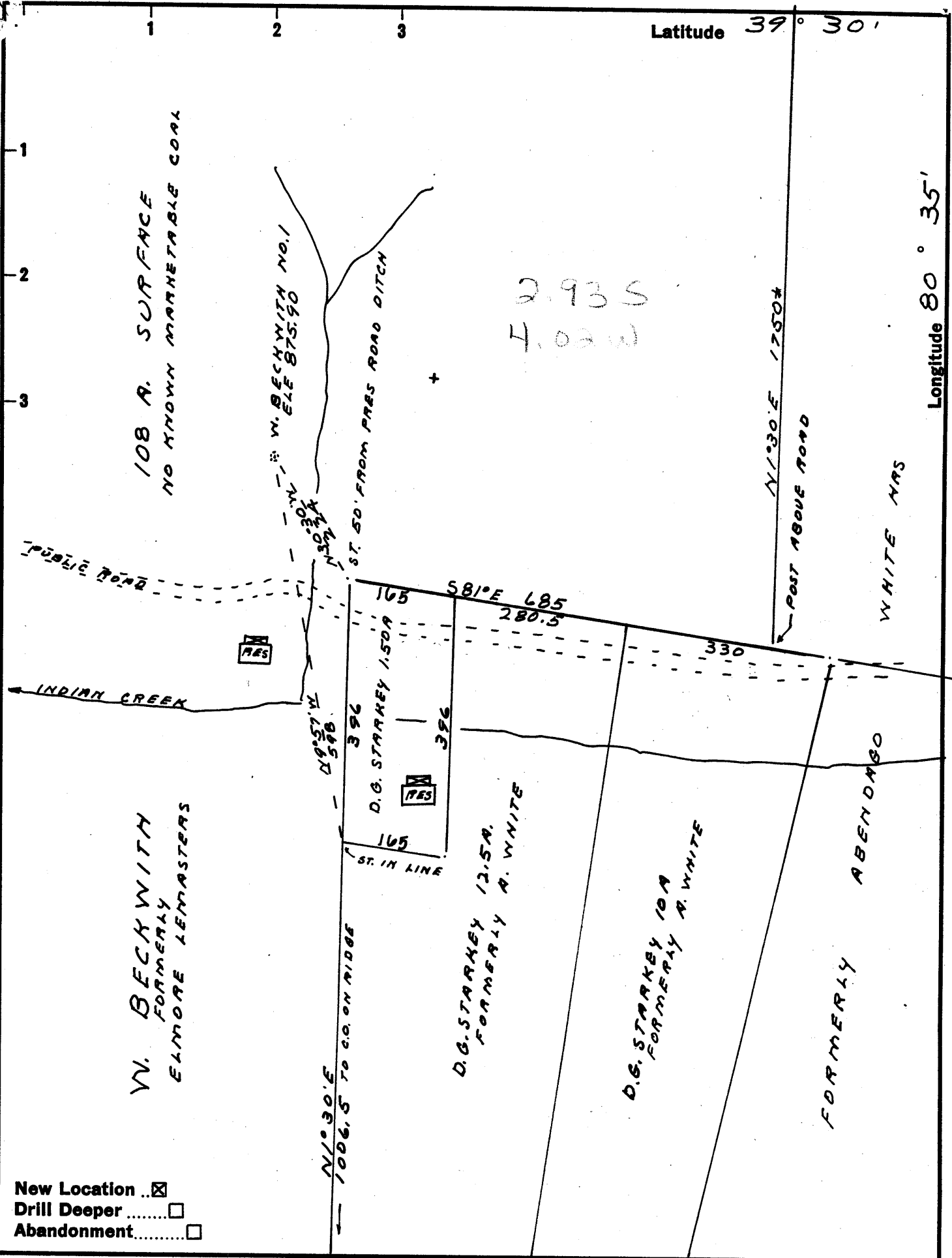


Latitude 39° 30'

Longitude 80° 35'



New Location
 Drill Deeper
 Abandonment

Company IMPERIAL OIL CO
 Address 307 UNION TRUST BLDG. PARKERSBURG, W. VA.
 Farm W. BECKWITH
 Tract NO. 1 Acres 108 Lease No. _____
 Well (Farm) No. 1 Serial No. _____
 Elevation (Spirit Level) 875.90
 Quadrangle CENTER POINT NC
 County TYLER District MCELROY
 Engineer Robert P. Whelan
BY S. HERBERT HIBBOTHAM
 Engineer's Registration No. 3582
 File No. _____ Drawing No. _____
 Date 4-3-61 Scale 1" = 200'

STATE OF WEST VIRGINIA
 DEPARTMENT OF MINES
 OIL AND GAS DIVISION
 CHARLESTON

WELL LOCATION MAP
 FILE NO. TYL-309

+ Denotes location of well on United States Topographic Maps, scale 1 to 62,500, latitude and longitude lines being represented by border lines as shown.
 - Denotes one inch spaces on border line of original tracing.



STATE OF WEST VIRGINIA
DEPARTMENT OF MINES
OIL AND GAS DIVISION 9

Quadrangle CENTERPOINT
Permit No. TYL-309

WELL RECORD

Oil or Gas Well OIL
(KIND)

Company Imperial Oil Company
Address 307 Union Trust Bldg., Parkersburg, W. V.
Farm W. Beckwith Acres 108
Location (waters) Indian Creek
Well No. One Elev. 875.90
District McElroy County Tyler
The surface of tract is owned in fee by _____
Address _____
Mineral rights are owned by G. M. Foster, et al
Rt. #1, Little Hooking, Ohio
Address _____
Drilling commenced April 21, 1961
Drilling completed June 26, 1961
Date Shot _____ From _____ To _____
With _____
Open Flow _____ /10ths Water in _____ Inch
_____ /10ths Merc. in _____ Inch
Volume _____ Cu. Ft.
Rock Pressure _____ lbs. _____ hrs.
Oil _____ bbls., 1st 24 hrs.
WELL ACIDIZED _____

Casing and Tubing	Used in Drilling	Left in Well	Packers
Size			
16			Kind of Packer _____
13			
10	239'-11"		Size of _____
8 3/4	1224'		
6 3/4	1938'		Depth set _____
5 3/16			
3 4 1/2"		2756'	Perf. top _____
2			Perf. bottom _____
Liners Used			Perf. top _____
			Perf. bottom _____

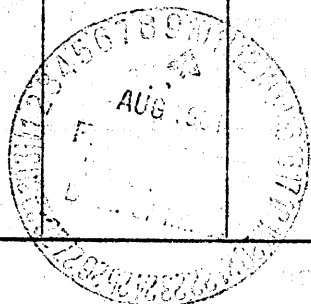
CASING CEMENTED 4 1/2 SIZE 2756 No. Ft. 6-26-61 Date
75 sks. Cement - 5 sks. Aquagel
Lawson Cementing Co.
COAL WAS ENCOUNTERED AT _____ FEET _____ INCHES
_____ FEET _____ INCHES FEET _____ INCHES
_____ FEET _____ INCHES FEET _____ INCHES

WELL FRACTURED NO
Well Fractured by Dowell August 28, 1961

RESULT AFTER TREATMENT 216 Barrels oil first 24 hours. Now 80 bbls.
ROCK PRESSURE AFTER TREATMENT 920 lbs. 24 hours.
Fresh Water _____ Feet Salt Water _____ Feet

Formation	Color	Hard or Soft	Top	Bottom	Oil, Gas or Water	Depth	Remarks
soil			0	4			
sand & gravel			4	14			
sand			14	25	Water	35'	
slate			25	50			
red rock			50	65			
slate			65	85			
sand red rock			85	105			
slate sand			105	120			
slate			120	130			
red rock			130	140			
slate			140	280			
red rock			280	290			
sand			290	318			
slate			318	322			
sand			322	335			
slate			335	370			
red rock			370	375			
slate & shells			375	433			
lime			433	478			
red rock			478	490			
slate			490	495			
lime			495	550			
slate & shells			550	660			
coal blossom			660	661			
lime			661	680			
slate & shells			680	718			

Formation	Color	Hard or Soft	Top ⁷	Bottom	Oil, Gas or Water	Depth Found	Remarks
sand			718	753			
lime			753	764			
red rock			764	770			
slate & shells			770	822			
sand			822	849			
slate			849	875			
sand			875	890			
lime			890	899			
slate & shells			899	938			
red rock			938	945			
slate & shells			945	1016			
red rock			1016	1025			
slate & shells			1025	1033			
Big Dunkard			1033	1065			
slate & shells			1065	1286			
sand			1286	1330			
slate			1330	1335			
sand ^{1st S.}			1335	1391			
slate black			1391	1495			
sand ^{2nd S.}			1495	1541	1946		
slate black			1541	1685			
sand ^{3rd S.}			1685	1732			
slate			1732	1805			
pink rock			1805	1818			
slate			1818	1830			
red rock			1830	1873			
lime			1873	1885			
slate			1885	1928			
Little Lime			1928	1944			
pencil			1944	1946			
Big Lime			1946	2004			
sand			2004	2007			
slate			2007	2011			
Sand Injun			2011	2175	Oil Show	2089'	
slate & shells			2175	2325			
sand			2325	2373			
lime			2373	2465			
slate			2465	2640			
pink rock			2640	2652			
slate			2652	2728			
pink rock			2728	2732			
sand Gordon Stray			2732	2737			
slate			2737	2743			
sand Gordon			2743	2775	Gas	2754'	
slate & shells			2775	3060	Oil	2754'	
Fifth Sand			3060	3071			
slate & shells			3071	3100			
TD				3100			



Date August 9, 1961

APPROVED Imperial Oil Company, Owner

By W. C. Jordan
President (Title)