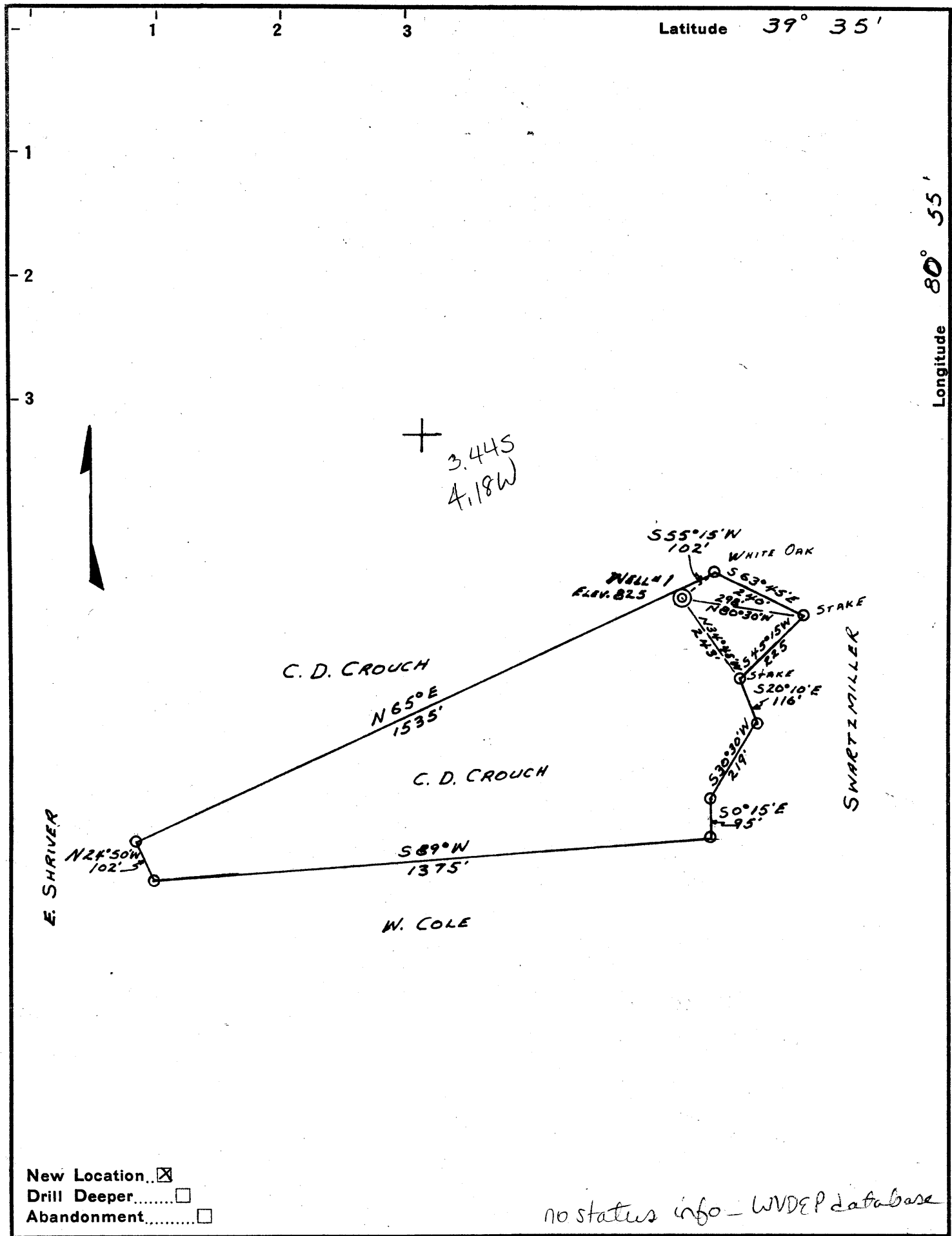


Latitude 39° 35'

Longitude 80° 55'



New Location
 Drill Deeper
 Abandonment

no status info - WVDEP database

Company C. D. CROUCH
 Address RD. #1 SISTERSVILLE, W.VA.
 Farm C. D. CROUCH
 Tract #2 Acres 15 Lease No. _____
 Well (Farm) No. 1 Serial No. _____
 Elevation (Spirit Level) 825
 Quadrangle NEW MARTINSVILLE SW
 County TYLER District LINCOLN
 Engineer P. C. Christy
 Engineer's Registration No. 530
 File No. _____ Drawing No. _____
 Date OCT. 14, 1961 Scale 1" = 300'

6/21/95 kla
 STATE OF WEST VIRGINIA
 DEPARTMENT OF MINES
 OIL AND GAS DIVISION
 CHARLESTON

WELL LOCATION MAP
 FILE NO. TYL-324

+ Denotes location of well on United States Topographic Maps, scale 1 to 62,500, latitude and longitude lines being represented by border lines as shown.

- Denotes one inch spaces on border line of original tracing.