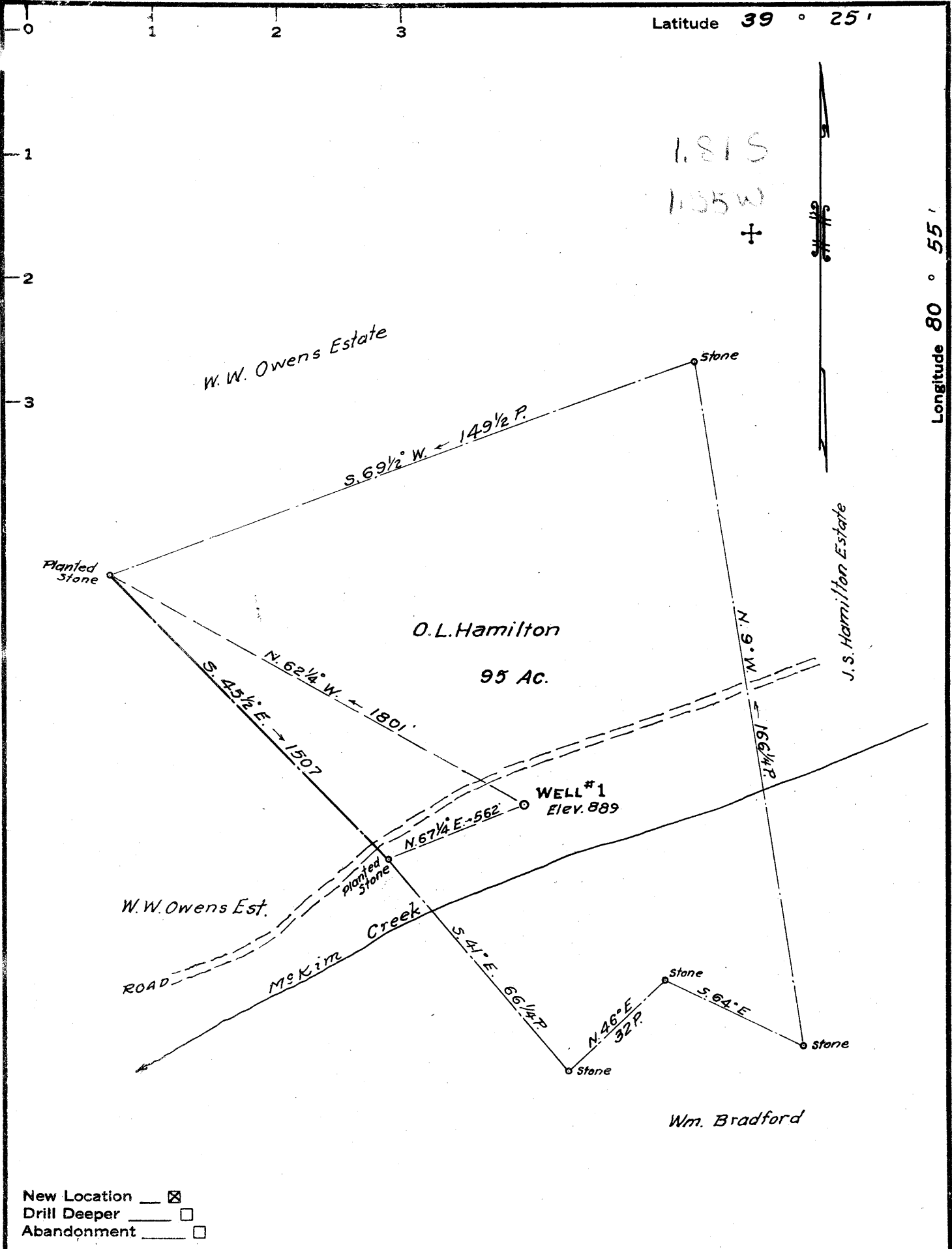


Latitude 39 ° 25'

Longitude 80 ° 55'

1.815
1155W
+



New Location
 Drill Deeper
 Abandonment

Company Jack E. Webber % Clarence M. Rogers
 Address 710 Prunty Bldg., Clarksburg, W. Va.
 Farm O.L. Hamilton
 Tract 1 Acres 95 Lease No. _____
 Well (Farm) No. 1 Serial No. _____
 Elevation (Spirit Level) 889
 Quadrangle West Union WC
 County Tyler District Meade
 Engineer Parker E. Peters
 Engineer's Registration No. 485
 File No. _____ Drawing No. _____
 Date May 4, 1962 Scale 1" = 30 P.

STATE OF WEST VIRGINIA
 DEPARTMENT OF MINES
 OIL AND GAS DIVISION
 CHARLESTON

WELL LOCATION MAP
 FILE NO. TYL-340

+ Denotes location of well on United States Topographic Maps, scale 1 to 62,500, latitude and longitude lines being represented by border lines as shown.

- Denotes one inch spaces on border line of original tracing.



STATE OF WEST VIRGINIA
DEPARTMENT OF MINES
OIL AND GAS DIVISION 30

Quadrangle West Union

WELL RECORD

Permit No. TYL 540

Oil or Gas Well Gas
(KIND)

Company J. E. Webber
Address 710 Prunty Building, Clarksburg
Farm O. L. Hamilton Acres 95
Location (waters) McKim Creek
Well No. 1 Elev. 889 ft
District Meade County Tyler
The surface of tract is owned in fee by O. L. Hamilton
Address Huntington, W. Va.
Mineral rights are owned by O. L. Hamilton, et al
Address Huntington, W. Va.

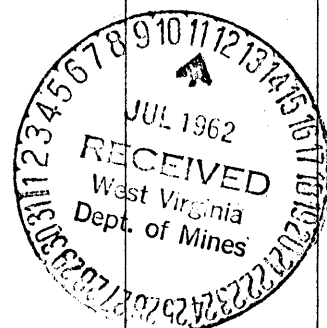
Casing and Tubing	Used in Drilling	Left in Well	Packers
Size			Kind of Packer
16	41 ft.	41 ft.	
13			
10	307 Ft 9" Pulled		Size of
8 1/4	1100ft 9" Pulled		
6 3/4			Depth set
5 3/16			
3 4 1/2	2075 ft	2075 ft	Perf. top
2			Perf. bottom
Liners Used			Perf. top
			Perf. bottom

Drilling commenced May 11, 1962
Drilling completed June 7, 1962
Date Shot From To
With
Open Flow 3 /10ths Water in 2 Inch
/10ths Merc. in Inch
Volume 50,000 Cu. Ft.
Rock Pressure 500 lbs. hrs.
Oil bbls., 1st 24 hrs.
WELL ACIDIZED

CASING CEMENTED Yes SIZE No. Ft. Date
80 sks. cement, DOWELL
COAL WAS ENCOUNTERED AT FEET INCHES
 FEET INCHES FEET INCHES
 FEET INCHES FEET INCHES

WELL FRACTURED with 1,000 barrels of
water, 500 gallons of acid
RESULT AFTER TREATMENT 200,000 Cu. Ft.
ROCK PRESSURE AFTER TREATMENT 600 lbs. 12 hours
Fresh Water X Feet 25 ft. Salt Water Feet

Formation	Color	Hard or Soft	Top	Bottom	Oil, Gas or Water	Depth	Remarks
Red Clay			0	20			
Slate			20	40			
Red Rock			40	160			
Slate			160	200			
Sand			200	230			
Slate & Shells			230	250			
Red Rock			250	290			
Slate & Shells			290	300			
Sand			300	370			
Black Slate			370	380			
Slate & Shells			380	405			
Red Rock			405	450			
Lime Red			450	495			
Slate			495	540			
Sand			540	560			
Red Rock			560	570			
Slate & Shells			570	615			
Lime (Hard)			615	635			
Slate & Shells			635	720			
Lime			720	775			
Red Rock			775	810			
Slate & Shells			810	820			
Red Rock			820	850			
Slate			850	862			
Red Rock			862	900			



Formation	Color	Hard or Soft	Top 30	Bottom	Oil, Gas or Water	Depth Found	Remarks
Slate & Shells			900	940			
Red. Rock			940	990			
Black Slate			990	1050			
✓ Sand 2 Cow Run			1050	1090			
White Slate			1090	1120			
Pink Rock			1120	1130			
Slate & Shells			1130	1295			
✓ 1st Salt Sand			1295	1400		1770	
Slate			1400	1405			
✓ 2nd Sand			1405	1465		888	
Slate & Shells			1465	1505			
✓ 3rd Sand			1505	1560		921	
Black Slate			1560	1580			
✓ Maxon Sand			1580	1617			
Black Slate			1617	1745			
Sand Blue Monday			1745	1780			
✓ Pencil Cove			1780	1790			
✓ Big Lime			1790	1880			
✓ Injin Sand			1880	2040			
Shale			2040				
T. D.			2076				

Show of gas
1880 & 1895
Increase in
Gas 1960 -
1972
(Black Oil 1970 - 1975
Oil 2025 -
2030

Date 7/10, 1962

APPROVED J. E. Wilber, Owner

By Harvey W. Jones (Title)