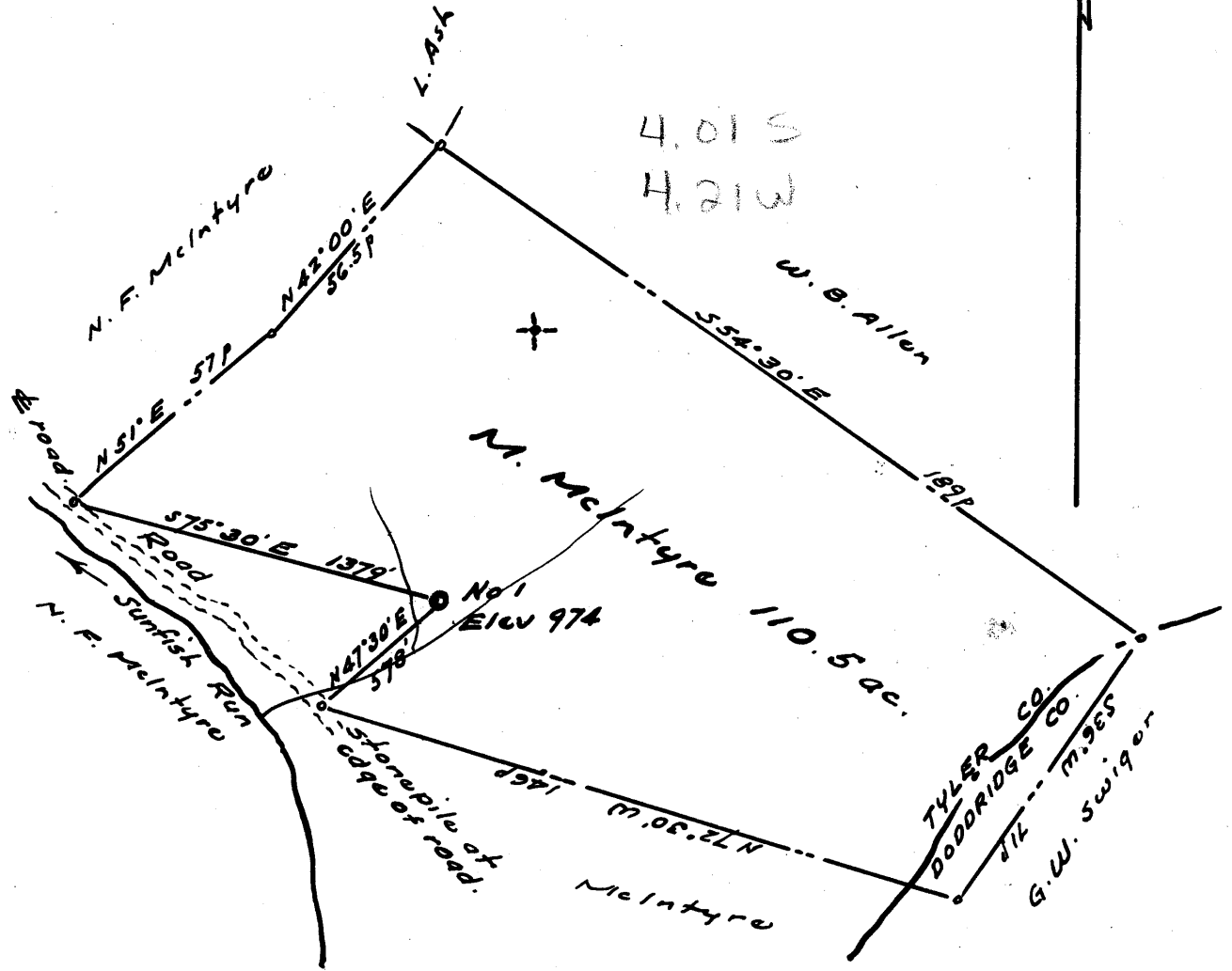


Latitude 39° 30'

Longitude 80° 35'



New Location ..    
 Drill Deeper .....    
 Abandonment.....

Company PETROLEUM PROMOTIONS   
 Address % Mid Atlantic Exp Co., Charleston, W. Va.   
 Farm M. McIntyre   
 Tract \_\_\_\_\_ Acres 110.5 Lease No. \_\_\_\_\_   
 Well (Farm) No. One Serial No. \_\_\_\_\_   
 Elevation (Spirit Level) 974   
 Quadrangle Centerpoint NC   
 County Tyler District McElroy   
 Engineer [Signature]   
 Engineer's Registration No. 1227   
 File No. \_\_\_\_\_ Drawing No. \_\_\_\_\_   
 Date May 1962 Scale 1" = 400'

STATE OF WEST VIRGINIA   
 DEPARTMENT OF MINES   
 OIL AND GAS DIVISION   
 CHARLESTON

**WELL LOCATION MAP**

FILE NO. Tyl-344

+ Denotes location of well on United States Topographic Maps, scale 1 to 62,500, latitude and longitude lines being represented by border lines as shown.

- Denotes one inch spaces on border line of original tracing.

6-0 (095)



STATE OF WEST VIRGINIA  
DEPARTMENT OF MINES  
OIL AND GAS DIVISION 27

Quadrangle Centerpoint

Permit No. TYL-344

WELL RECORD

Oil or Gas Well dry (KIND)

Company Petroleum Promotions  
Address 212 Nelson Bldg., Charleston, W. Va.  
Farm M. McIntyre Acres 110.5  
Location (waters) Sunfish Run  
Well No. 1 Elev. 974'  
District McElroy County Tyler  
The surface of tract is owned in fee by M. McIntyre  
Address \_\_\_\_\_  
Mineral rights are owned M. & E. L. Albert  
Address Blacksburg, Va.  
Drilling commenced May 28, 1962  
Drilling completed July 30, 1962  
Date Shot \_\_\_\_\_ From \_\_\_\_\_ To \_\_\_\_\_  
With \_\_\_\_\_  
Open Flow \_\_\_\_\_ /10ths Water in \_\_\_\_\_ Inch  
\_\_\_\_\_ /10ths Merc. in \_\_\_\_\_ Inch  
Volume \_\_\_\_\_ Cu. Ft.  
Rock Pressure \_\_\_\_\_ lbs. \_\_\_\_\_ hrs.  
Oil \_\_\_\_\_ bbls., 1st 24 hrs.  
WELL ACIDIZED \_\_\_\_\_

Casing and Tubing	Used in Drilling	Left in Well	Packers
Size			Kind of Packer
16			
13	33	33	
10	210		Size of
8 1/2	805		
<del>8 1/2</del>	1877		Depth set
<del>XXXX</del> 4 1/2	2870	830	
3			Perf. top <u>2134-37</u>
2			Perf. bottom <u>2148-51</u>
Liners Used			Perf. top <u>2810</u>
			Perf. bottom <u>2812</u>

CASING CEMENTED 4 1/2 SIZE 2870 No. Ft. 8-1-62 Date

COAL WAS ENCOUNTERED AT No FEET \_\_\_\_\_ INCHES  
\_\_\_\_\_ FEET \_\_\_\_\_ INCHES FEET \_\_\_\_\_ INCHES  
\_\_\_\_\_ FEET \_\_\_\_\_ INCHES FEET \_\_\_\_\_ INCHES

WELL FRACTURED Gordon - 20,000 gals. water 22,000# Sand

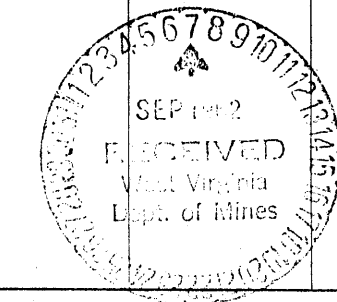
Injun - 9,000 gals. Water 13,000# Sand

RESULT AFTER TREATMENT Gordon - dry Injun - water bearing

ROCK PRESSURE AFTER TREATMENT None recorded

Fresh Water \_\_\_\_\_ Feet \_\_\_\_\_ Salt Water \_\_\_\_\_ Feet \_\_\_\_\_

Formation	Color	Hard or Soft	Top	Bottom	Oil, Gas or Water	Depth	Remarks
Sand Rock			0	15			
Red Rock			15	24			
Sandy Lime			24	33			
Red Rock			33	40			
Blue Sand			40	60			
Sandy Shale			60	64			
Sand			64	94			
Sandy Shale			94	103			
Sandy Shale			103	125			
Lime			125	134			
Red Rock			134	137			
Red Rock			137	163			
Shale			163	170			
Shale			170	191			
Sand			191	197			
Sand			197	205			
Shale			205	215			
Shale			215	265			
Sandy Shale			265	277			
Shale			277	30			
Shale			320	327			
Shale			327	330			
Gritty Lime			330	340			
Shale			340	350			
Gritty Lime			350	365			



Formation	Color	Hard or Soft	Top <i>27</i>	Bottom	Oil, Gas or Water	Depth Found	Remarks
Shale			365	369			
Sandy Shale			369	403			
Slate			403	415			
Red Rock			415	420			
Blue Sand			420	427			
Shale			427	438			
Shale			438	450			
Sand			450	461			
Sticky Shale			461	470			
Gritty Lime			470	504			
Sandy Lime			504	531			
Red Rock & Lime Shells			531	536			
Blue Sandy Lime			536	547			
Gritty Lime			547	566			
Shale & Shells			566	614			
Sandy Lime			614	619			
Broken Sand			619	628			
Slate			628	635			
Lime			635	645			
Slate & Shells			645	668			
Sandy Lime			668	708			
Slate & Shells			708	715			
Sandy Lime			715	719			
Brown Lime			719	728			
Slate & Shells			728	772			
White Sand			772	796			
Sandy Shale			796	818			
Sand			818	855			
Slate & Shells			855	860			
Sand			860	891			
Dark Lime			891	910			
Sandy Shale & Shells			910	918			
Brown Lime			918	935			
Shale & Shells			935	1064			
Black Lime			1064	1081			
Slate & Shells			1081	1084			
Sand			1084	1113			
Slate & Lime Shells			1113	1121			
Sand			1121	1174			
Sandy Shale			1174	1178			
Slate & Shells			1178	1240			
Sand-Shale & Shells			1240	1249			
Blue Sand			1249	1251			
Sandy Shale			1251	1332			
Sand			1332	1388			
Sandy Shale & Shells			1388	1397			
Sand			1397	1405			
Slate & Shells			1405	1466			
White Sand <i>Salt</i>			1466	1570			
Sandy Shale			1570	1589			
White Sand <i>Salt</i>			1589	1705			
Sandy Lime			1705	1740			
Slate & Shells			1740	1746			
Slate & Shells			1746	1767			
Pink Rock			1767	1850			
Lime			1850	1900			
Red Rock			1900	1934			
Gritty Lime			1934	1938			

Date....., 19.....

APPROVED....., Owner

By.....  
(Title)



STATE OF WEST VIRGINIA  
DEPARTMENT OF MINES  
OIL AND GAS DIVISION 27A

Quadrangle \_\_\_\_\_  
Permit No. Jyl-344

WELL RECORD

Oil or Gas Well \_\_\_\_\_  
(KIND)

Company \_\_\_\_\_  
Address \_\_\_\_\_  
Farm \_\_\_\_\_ Acres \_\_\_\_\_  
Location (waters) \_\_\_\_\_  
Well No. \_\_\_\_\_ Elev. \_\_\_\_\_  
District \_\_\_\_\_ County \_\_\_\_\_  
The surface of tract is owned in fee by \_\_\_\_\_  
Address \_\_\_\_\_  
Mineral rights are owned by \_\_\_\_\_  
Address \_\_\_\_\_  
Drilling commenced \_\_\_\_\_  
Drilling completed \_\_\_\_\_  
Date Shot \_\_\_\_\_ From \_\_\_\_\_ To \_\_\_\_\_  
With \_\_\_\_\_  
Open Flow \_\_\_\_\_ /10ths Water in \_\_\_\_\_ Inch  
\_\_\_\_\_ /10ths Merc. in \_\_\_\_\_ Inch  
Volume \_\_\_\_\_ Cu. Ft.  
Rock Pressure \_\_\_\_\_ lbs. \_\_\_\_\_ hrs.  
Oil \_\_\_\_\_ bbls., 1st 24 hrs.  
WELL ACIDIZED \_\_\_\_\_  
WELL FRACTURED \_\_\_\_\_

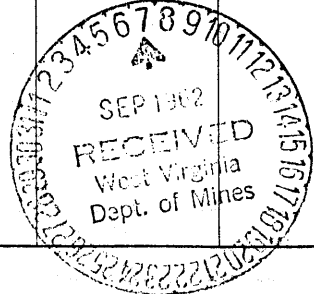
Casing and Tubing	Used in Drilling	Left in Well	Packers
Size			Kind of Packer _____
16			
13			
10			Size of _____
8 1/4			
6 3/8			Depth set _____
5 3/16			
3			Perf. top _____
2			Perf. bottom _____
Liners Used			Perf. top _____
			Perf. bottom _____

CASING CEMENTED \_\_\_\_\_ SIZE \_\_\_\_\_ No. Ft. \_\_\_\_\_ Date \_\_\_\_\_

COAL WAS ENCOUNTERED AT \_\_\_\_\_ FEET \_\_\_\_\_ INCHES  
\_\_\_\_\_ FEET \_\_\_\_\_ INCHES \_\_\_\_\_ FEET \_\_\_\_\_ INCHES  
\_\_\_\_\_ FEET \_\_\_\_\_ INCHES \_\_\_\_\_ FEET \_\_\_\_\_ INCHES

RESULT AFTER TREATMENT \_\_\_\_\_  
ROCK PRESSURE AFTER TREATMENT \_\_\_\_\_  
Fresh Water \_\_\_\_\_ Feet \_\_\_\_\_ Salt Water \_\_\_\_\_ Feet \_\_\_\_\_

Formation	Color	Hard or Soft	Top	Bottom	Oil, Gas or Water	Depth	Remarks
Lime			1938	1944			
Red Rock			1944	1951			
Sandy Shale			1951	1968			
Lime			1968	1986			
Lime			1986	2020			
✓ Lime & Pencil Cave			2020	2023			
✓ Big Lime			2023	2036			
Sandy Lime			2036	2053			
Big Lime			2053	2060			
Black Lime			2060	2085			
✓ Injun Sand			2085	2125			
Bottom Of Injun			2125	2237			
Sandy Slate			2237	2245			
Black Lime			2245	2249			
Slate & Shells			2249	2278			
Sand			2278	2286			
Slate & Shells			2286	2350			
Sand			2350	2356			
Sandy Lime			2356	2362			
Slate & Shells			2362	2375			
✓ Sand			2375	2485			
Sandy Slate			2485	2527			
Sand			2527	2551			
Shale			2551	2570			
Broken Lime			2570	2590			
Slate & Shells			2590	2597			



Formation	Color	Hard or Soft	Top 27A	Bottom	Oil, Gas or Water	Depth Found	Remarks
Sand			2597	2608			
Shale & Sand Shells			2608	2666			
Sand			2666	2676			
Pink Rock			2676	2707			
Shale & Shells			2707	2757			
Sand			2757	2770			
Shale			2770	2775			
Sandy Shale			2775	2787			
Red Shale			2787	2790			
Sand			2790	2820			
Slate & Shells			2820	2870			
T. D.			2870'				
					Gas @	2800' - 2805'	

Date 9/6, 1962

APPROVED \_\_\_\_\_, Owner

By H. L. Diddle

(Title)