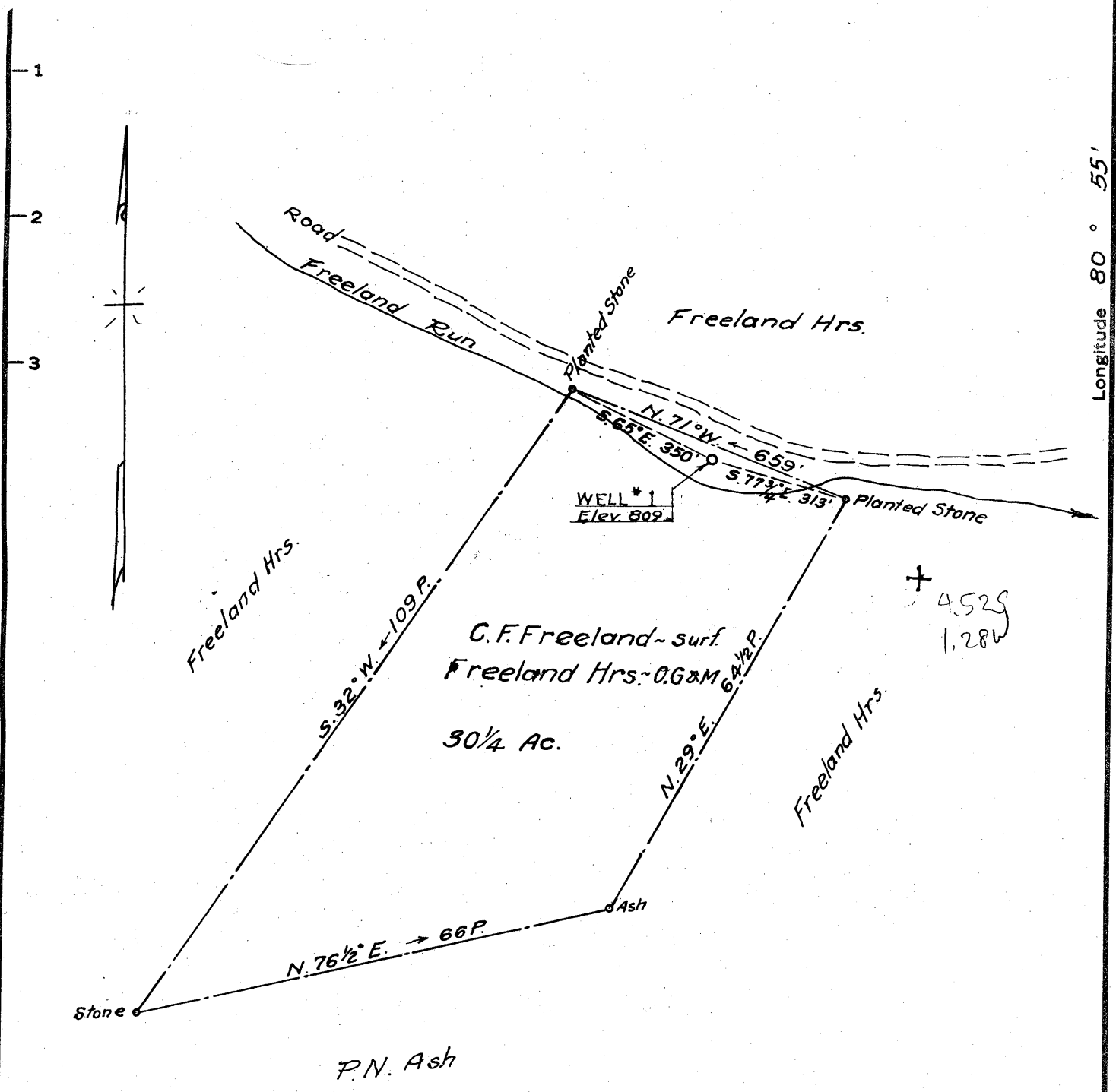


Latitude 39° 30'

Longitude 80° 55'



New Location
 Drill Deeper
 Abandonment

*no status info - WVDEP
 date June 12/1956*

Company Blue Ridge Oil & Gas Co., Robert W. Berry, Agt.
 Address Middlebourne, W. Va.
 Farm C.F. Freeland (surf.) Freeland Hrs. O.G.M.
 Tract 1 Acres _____ Lease No. _____
 Well (Farm) No. 1 Serial No. _____
 Elevation (Spirit Level) 809
 Quadrangle West Union NW
 County Tyler District Meade
 Engineer Parker E. Peters
 Engineer's Registration No. 485
 File No. _____ Drawing No. _____
 Date July 13, 1962 Scale 1" = 20 P.

STATE OF WEST VIRGINIA
 DEPARTMENT OF MINES
 OIL AND GAS DIVISION
 CHARLESTON

WELL LOCATION MAP
 FILE NO. JYL-351

+ Denotes location of well on United States Topographic Maps, scale 1 to 62,500, latitude and longitude lines being represented by border lines as shown.

— Denotes one inch spaces on border line of original tracing.