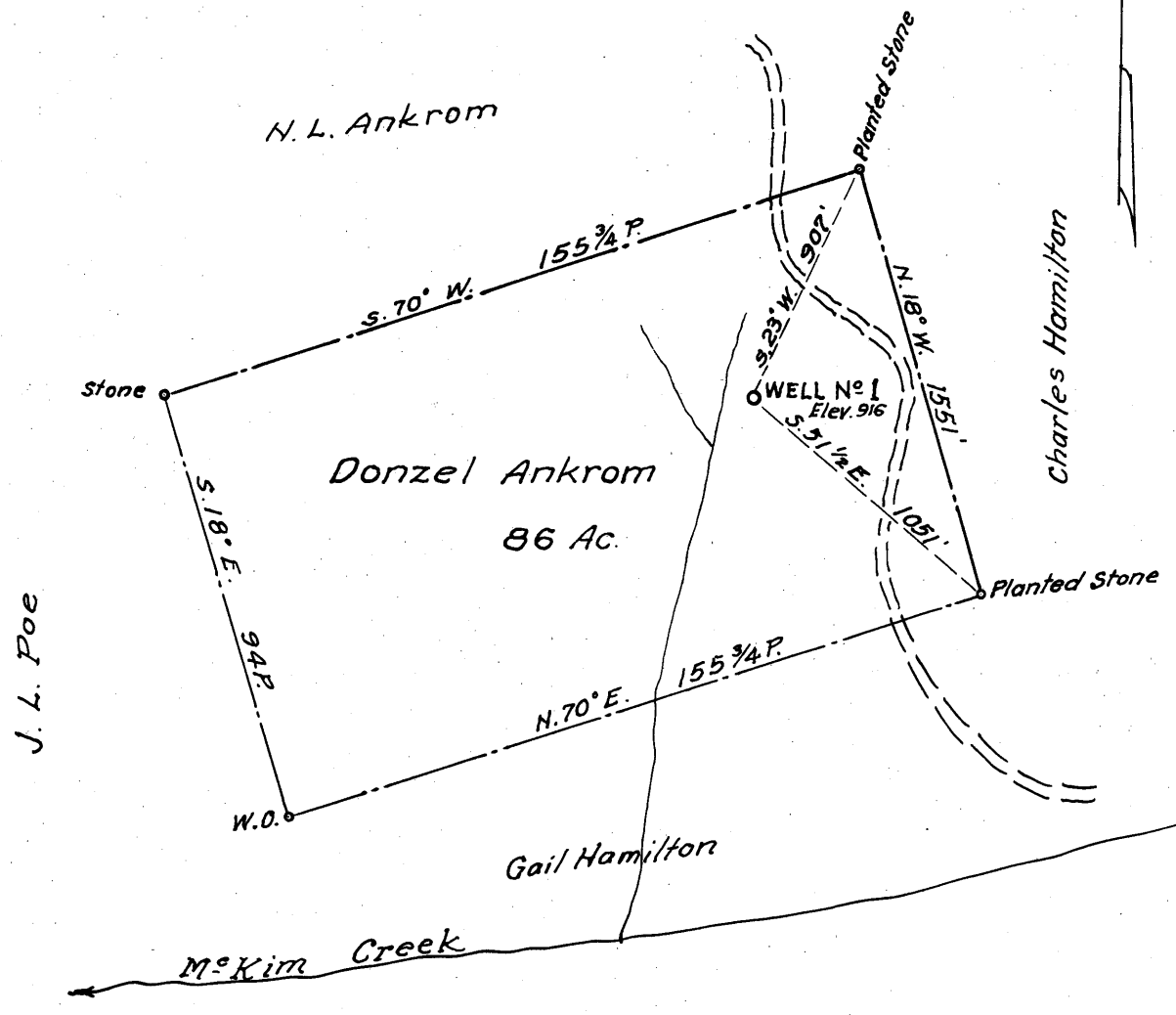
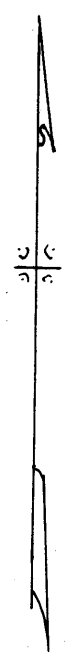


Latitude 39° 25'

Longitude 80° 55'

2.86 S
2.45 W

+



New Location
 Drill Deeper
 Abandonment

Company James Proctor
 Address 1233 Cloverfield Ave, Dayton, Ohio
 Farm Donzel Ankrom
 Tract 1 Acres 86 Lease No. _____
 Well (Farm) No. 1 Serial No. _____
 Elevation (Spirit Level) 916
 Quadrangle West Union WC
 County Tyler District Meade
 Engineer Parker E. Peters
 Engineer's Registration No. 485
 File No. _____ Drawing No. _____
 Date July 25, 1962 Scale 1" = 40 P.

STATE OF WEST VIRGINIA
 DEPARTMENT OF MINES
 OIL AND GAS DIVISION
 CHARLESTON

WELL LOCATION MAP
 FILE NO. T4L-355

+ Denotes location of well on United States Topographic Maps, scale 1 to 62,500, latitude and longitude lines being represented by border lines as shown.

- Denotes one inch spaces on border line of original tracing.



STATE OF WEST VIRGINIA
DEPARTMENT OF MINES
OIL AND GAS DIVISION 22

Quadrangle West Union

Permit No. TYL-355

WELL RECORD

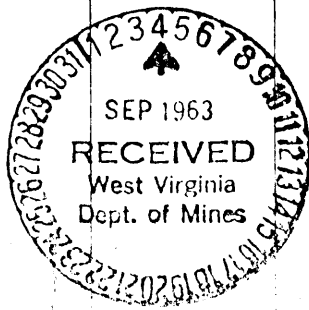
Oil or Gas Well Oil

Company <u>Carter Development Co., Inc.</u>	Casing and Tubing	Used in Drilling	Left in Well	Packers
Address <u>1233 Cloverfield Ave., Dayton 29, Ohio</u>				
Farm <u>Donsel Ankrom</u> Acres <u>81</u>	Size			
Location (waters)				
Well No. <u>1</u> Elev. <u>916</u>	16			Kind of Packer
District <u>Meade</u> County <u>Tyler</u>	13			
The surface of tract is owned in fee by <u>Donsel Ankrom</u>	10			Size of
Address <u>RFD 4, Parkersburg, W. Va.</u>		<u>847</u>	<u>847</u>	
Mineral rights are owned by <u>Donsel Ankrom</u>	6 5/8	<u>1652</u>	<u>1652</u>	Depth set
Address <u>Parkersburg, W. Va.</u>	5 3/16			
Drilling commenced <u>7/13/62</u>	<u>4 1/2</u>		<u>1992</u>	Perf. top
Drilling completed <u>11/20/62</u>	2			Perf. bottom
Date Shot From To	Liners Used			Perf. top <u>1966</u>
With				Perf. bottom <u>1974</u>
Open Flow <u>5</u> /10ths Water in _____ Inch				
_____ /10ths Merc. in _____ Inch				
Volume _____ Cu. Ft.				
Rock Pressure _____ lbs. _____ hrs.				
Oil <u>60</u> bbls., 1st 24 hrs.				
WELL ACIDIZED _____				
WELL FRACTURED <u>1000 barrell water, 20,000 lbs. sand by Dowell; Perforation and logging</u>				
by <u>Schlumberger</u>				
RESULT AFTER TREATMENT <u>60 barrel - 24 hours</u>				
ROCK PRESSURE AFTER TREATMENT <u>750</u>				
Fresh Water <u>275</u> Feet <u>1446 & 1540</u> Salt Water <u>Hole full</u> Feet _____				

CASING CEMENTED 4 1/2 SIZE 1992 No. Ft. _____ Date _____

COAL WAS ENCOUNTERED AT _____ FEET _____ INCHES
 _____ FEET _____ INCHES FEET _____ INCHES
 _____ FEET _____ INCHES FEET _____ INCHES

Formation	Color	Hard or Soft	Top	Bottom	Oil, Gas or Water	Depth	Remarks
Surface	Brown		0	15			
Slate	Blue		15	25			
Sand	Brown		25	40			
Slate & Rock	Red		40	200			
Sand	Brown		200	230			
Red Rock	Red		230	275	Water	275	2 bailers per hr.
Lime shells	Gray		275	320			
Slate	Gray		320	356			
Lime	Gray		356	382			
Red Rock	Red		382	395			
Slate & Shell	Blue & Gray		392	420			
Lime Shells	Gray		420	500			
Slate & Shell	Blue & Gray		500	525			
Sand	Blue		525	540			
Slate & Shell	Gray		540	610			
Lime	Gray		610	630			
Slate & Shell	Blue		630	695			
Sand	Brown		695	710			
Slate	Gray		710	777			
Sand	Brown		777	790			
Red Rock	Red		790	838			
Cave	Red		838	855			
Lime	Gray		855	876			
Sand	Brown		876	885			
Slate	Gray		885	919			
Lime	Gray		919	933			
Sand	Blue		933	947			
Red Rock	Red		947	967			



Formation	Color	Hard or Soft	Top Z.Z.	Bottom	Oil, Gas or Water	Depth Found	Remarks
Lime	Gray		967	996			
Sand	Brown		996	1005			
Slate	Blue		1005	1030			
Lime	Gray		1030	1050			
Slate	Blue		1050	1066			
Red Rock	Red		1066	1074			
Slate & Shell	Gray		1074	1081			
Slate	Blue		1081	1090			
Sand	Brown		1090	1110			
Slate	Gray		1110	1135			
Red Rock	Red		1135	1140			
Lime	Gray		1140	1153			
Slate & Shell	Gray		1153	1174			
Lime	Gray		1174	1182			
Slate & Limshell	Gray		1182	1191			
Slate & Shell	Black		1191	1197			
Slate	Blue		1197	1254			
Lime	Gray		1254	1260			
Slate	Blue		1260	1361			
Salt Sand	White		1361	1410			
Slate	Blue		1410	1425			
Salt Sand	White		1425	1548	Water	1446	46 Bails Per hr.
Slate	Blue		1548	1644	Water	1540	Hole full
Lime	Gray		1644	1705			
Slate	Gray		1705	1769	1802		
Lime	Gray		1769	1798	916		
Pencil Cave	Blue		1798	1802	786		
Big Lime	Gray		1802	1864			
Keener	White		1864	1888			
Big Injun	Brownish		1888	1974	Oil	1966	
Slate	White						
Slate	Blue		1974	1992			

Date September 3, 19 63

APPROVED Carter Development Co., Inc. Owner

By *James F. [Signature]*
(Title) General Manager