

New Location
 Drill Deeper
 Abandonment

Company James Proctor
 Address 1233 Cloverfield Ave. Dayton, Ohio
 Farm Stella Jones
 Tract 1 Acres 40 Lease No. _____
 Well (Farm) No. 1 Serial No. _____
 Elevation (Spirit Level) 1087
 Quadrangle West Union WC 11.12
 County Tyler District Meade
 Engineer Parker E. Pitura
 Engineer's Registration No. 485
 File No. _____ Drawing No. _____
 Date Oct 8, 1962 Scale 1" = 20 P.

STATE OF WEST VIRGINIA
 DEPARTMENT OF MINES
 OIL AND GAS DIVISION
 CHARLESTON

WELL LOCATION MAP

FILE NO. TYL-365

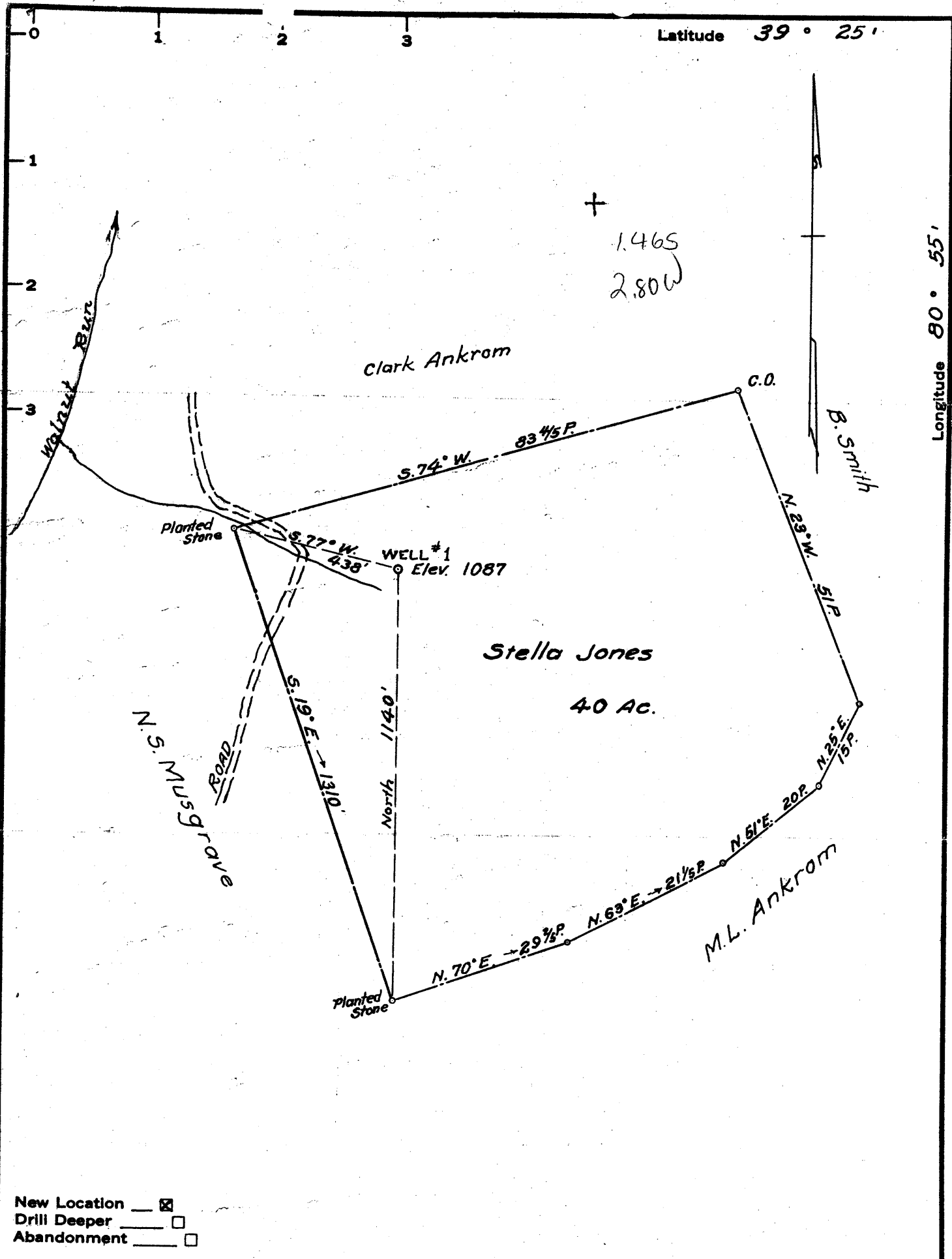
Cancelled → 06/01/1964

+ Denotes location of well on United States Topographic Maps, scale 1 to 62,500, latitude and longitude lines being represented by border lines as shown.

— Denotes one inch spaces on border line of original tracing.

Latitude 39° 25'

Longitude 80° 55'



New Location
 Drill Deeper
 Abandonment

Company James Priator
 Address 1233 Cloverfield Ave Dayton, Ohio
 Farm Stella Jones
 Tract 1 Acres 40 Lease No. _____
 Well (Farm) No. 1 Serial No. _____
 Elevation (Spirit Level) 1087
 Quadrangle West Union WC
 County Tyler District Meade
 Engineer Parker E. Peters
 Engineer's Registration No. 485
 File No. _____ Drawing No. _____
 Date Oct 8, 1962 Scale 1" = 20 P.

STATE OF WEST VIRGINIA
 DEPARTMENT OF MINES
 OIL AND GAS DIVISION
 CHARLESTON

WELL LOCATION MAP
 FILE NO. TYL-365

+ Denotes location of well on United States Topographic Maps, scale 1 to 62,500, latitude and longitude lines being represented by border lines as shown.

- Denotes one inch spaces on border line of original tracing.