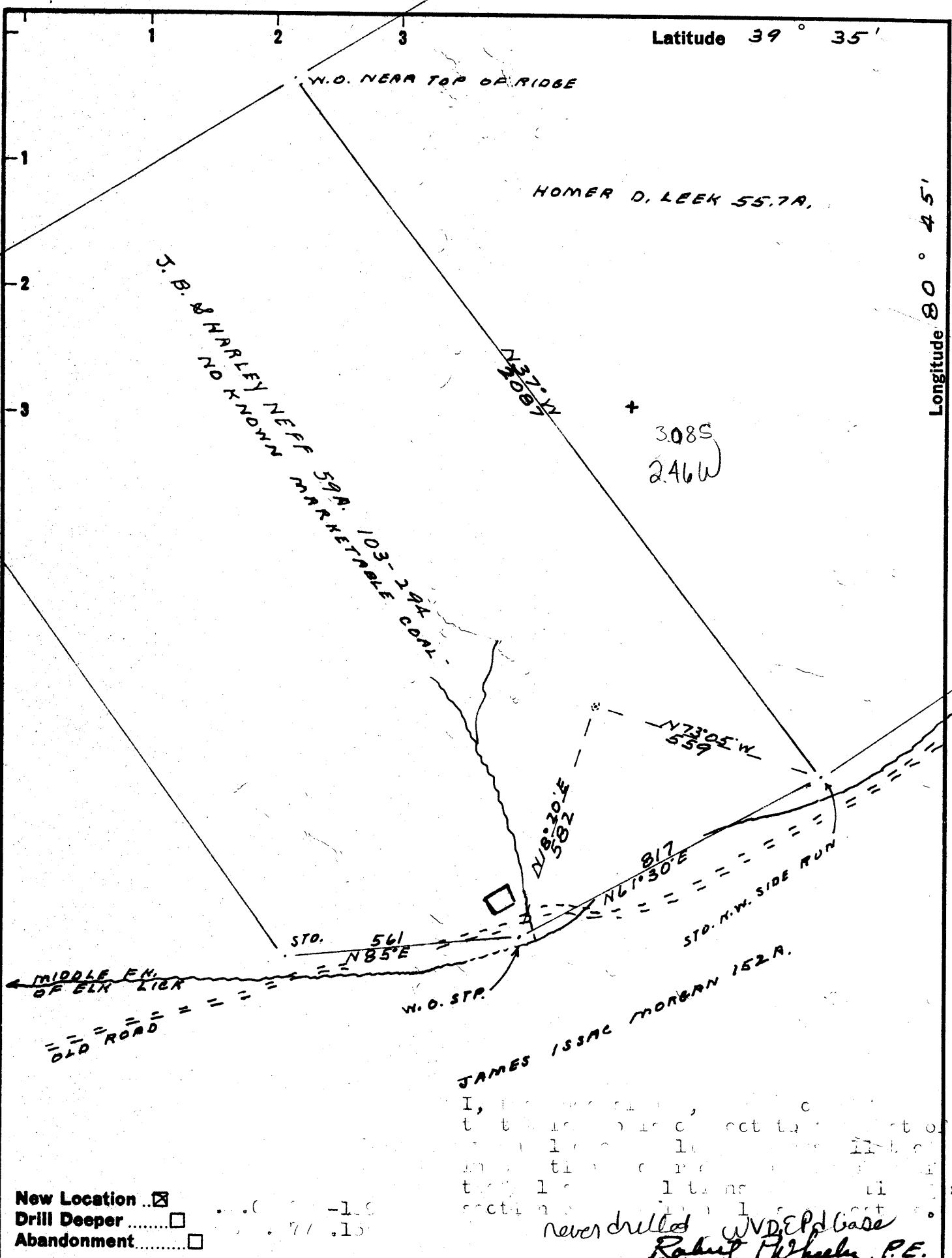


Latitude 39° 35'

Longitude 80° 45'



New Location
 Drill Deeper
 Abandonment

I, the undersigned, certify that this is a true and correct copy of the original location map as filed in the office of the State of West Virginia Department of Mines, Oil and Gas Division, Charleston, West Virginia, on this 12th day of July, 1963.
never drilled WVDOP Case
Robert P. Wheeler, P.E.

HENRY M. METZ, BOX 341, BEECH BOTTOM W. VA, AGT FOREMAN
 Company MARVIN E. WILHITE
 Address BOX 326, ORANGE PARK, FLA.
 Farm J. B. SHARLEY NEFF
 Tract _____ Acres 59 1/2 Lease No. _____
 Well (Farm) No. 1 Serial No. _____
 Elevation (Spirit Level) 932
 Quadrangle NEW MARTINSVILLE SE
 County TYLER District ELLSWORTH
 Engineer ROBERT P. WHEELER
 SURVEY BY J. HERBERT HIBBINGOTHAM
 Engineer's Registration No. 3582
 File No. _____ Drawing No. _____
 Date 4-27-63 Scale 1" = 300'

STATE OF WEST VIRGINIA
 DEPARTMENT OF MINES
 OIL AND GAS DIVISION
 CHARLESTON
 Canc. 12/17/1963
WELL LOCATION MAP
 FILE NO. TY1-376

+ Denotes location of well on United States Topographic Maps, scale 1 to 62,500, latitude and longitude lines being represented by border lines as shown.
 - Denotes one inch spaces on border line of original tracing.