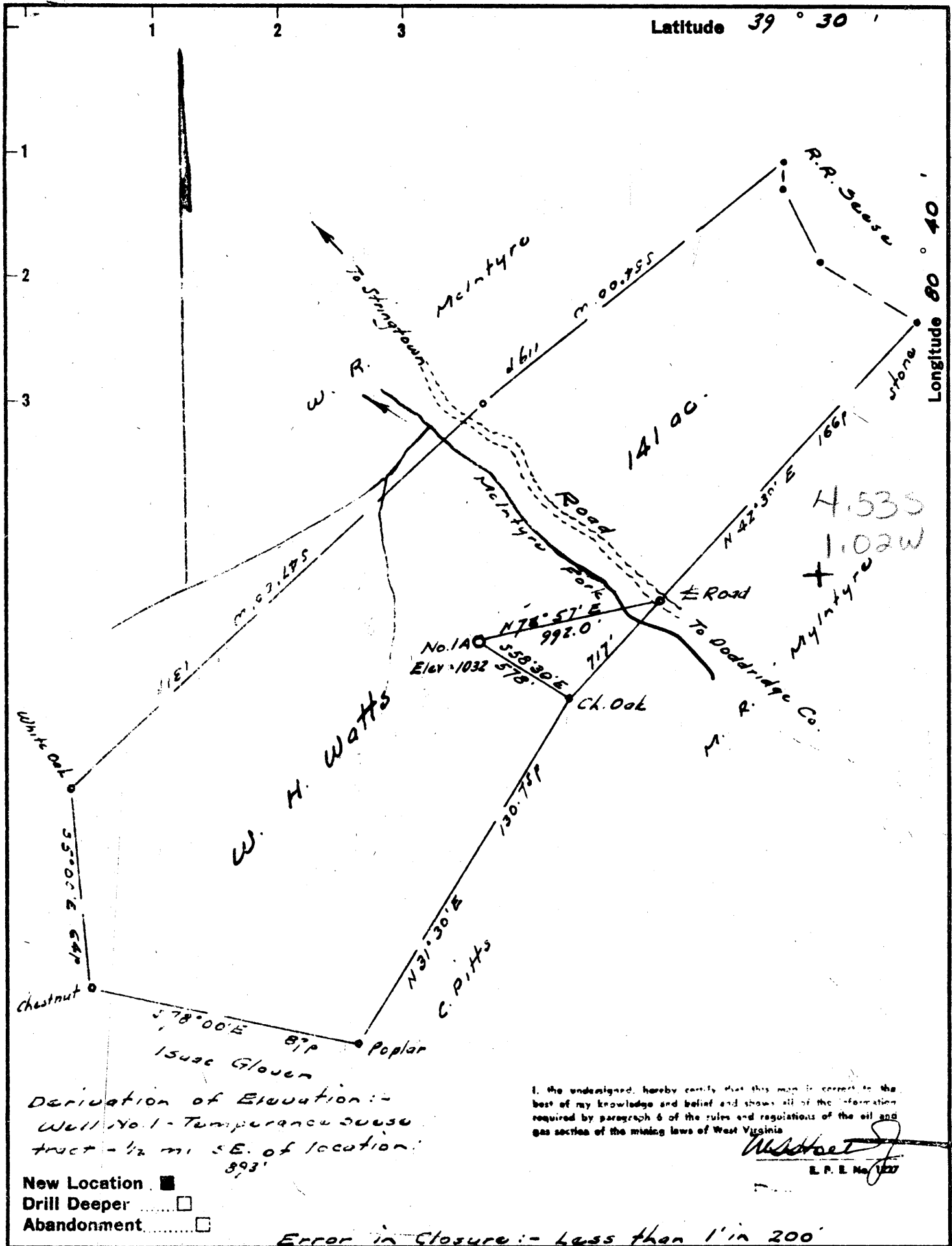


M



Derivation of Elevation:-
 Well No. 1 - Temperature gauge
 tract - 1/2 mi. SE. of location:
 893'

I, the undersigned, hereby certify that this map is correct to the best of my knowledge and belief and shows all of the information required by paragraph 6 of the rules and regulations of the oil and gas section of the mining laws of West Virginia.

W. H. Mosser
 E.P.E. No. 1227

- New Location
- Drill Deeper
- Abandonment

Error in Closure: - Less than 1' in 200'

Company W. H. MOSSER
 Address Harrisville, West Va.
 Farm W. H. Watts
 Tract _____ Acres 141 Lease No. _____
 Well (Farm) No. 1-A Serial No. _____
 Elevation (Spirit Level) 1032'
 Quadrangle Centerpoint NW
 County Tyler District McElroy
 Engineer W. H. Mosser
 Engineer's Registration No. 1227
 File No. _____ Drawing No. _____
 Date July 15, 1963 Scale 1" = 400' = 660'

STATE OF WEST VIRGINIA
 DEPARTMENT OF MINES
 OIL AND GAS DIVISION
 CHARLESTON

WELL LOCATION MAP
 FILE NO. 741-380

+ Denotes location of well on United States Topographic Maps, scale 1 to 62,500, latitude and longitude lines being represented by border lines as shown.

- Denotes one inch spaces on border line of original tracing.



STATE OF WEST VIRGINIA
DEPARTMENT OF MINES
OIL AND GAS DIVISION 18

Rotary
Spudder
Cable Tools
Storage

Quadrangle Centerpoint

Permit No. TYL-380

WELL RECORD

Oil or Gas Well Dry
(KIND)

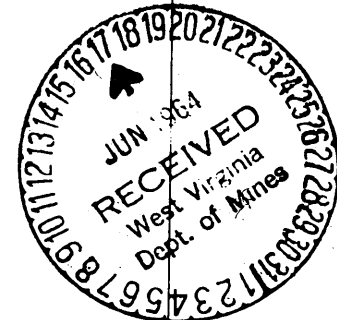
Company Watts # 1 Oil & Gas
Address W.H. Mossor, Harrisville, W. Va.
Farm W. H. Watts Acres 141
Location (waters) Spring Run of Indian Creek
Well No. One (1) Elev. 1032
District McElroy County Tyler
The surface of tract is owned in fee by Martin V. Baker
Address Alvy, W. Va.
Mineral rights are owned by Martin V. Baker Et Al
Address Alvy, W. Va.
Drilling commenced 21 Oct 63
Drilling completed 11 June 64
Date Shot _____ From _____ To _____
With _____
Open Flow 6/10ths Water in 1" Inch
_____/10ths Merc. in _____ Inch
Volume 25,000 Cu. Ft.
Rock Pressure 55 lbs. 72 hrs.
Oil _____ bbls., 1st 24 hrs.
WELL ACIDIZED Not Acidized
WELL FRACTURED Not fractured

Casing and Tubing	Used in Drilling	Left in Well	Packers
Size			Kind of Packer
16	19'		
13			
10	380		Size of
8 3/4	1200		
6 5/8	2250		Depth set
5 3/16			
3			Perf. top
2			Perf. bottom
Liners Used			Perf. top
			Perf. bottom

CASING CEMENTED _____ SIZE _____ No. Ft. _____ Date _____
Not Cemented
COAL WAS ENCOUNTERED AT None FEET _____ INCHES
_____ FEET _____ INCHES FEET _____ INCHES
_____ FEET _____ INCHES FEET _____ INCHES

RESULT AFTER TREATMENT Not Fractured
ROCK PRESSURE AFTER TREATMENT Not Fractured
Fresh Water None Feet _____ Salt Water _____ Feet _____

Formation	Color	Hard or Soft	Top	Bottom	Oil, Gas or Water	Depth	Remarks
Red Rock			0	30			
Slate			30	80			
Red Rock			80	95			
Slate			95	120			
Red Rock			120	165			
Slate			165	210			
Red Rock			210	220			
Slate			220	275			
Red Rock			275	290			
Slate			290	345			
Black Slate			345	360			
Lime			360	630			
Slate			630	870			
Sand			870	900			
Slate			900	1005			
Red Rock			1005	1020			
Lime			1020	1055			
Red Rock			1055	1085			
Slate			1085	1145			
Red Rock			1145	1180			
Slate			1180	1210			
Sand			1210	1245			
Slate			1245	1255			
Sand			1255	1300			
Slate			1300	1365			
Sand			1365	1405			
Slate			1405	1455			
Sand			1455	1545			



Oil Show at 1260'

Formation	Color	Hard or Soft	Top 18	Bottom	Oil, Gas or Water	Depth Found	Remarks
Slate			1545	1680			
Sand			1680	1690			
Slate			1690	1815			
Sand			1815	1840			
Slate			1840	1950			
Red Rock			1950	2045			
Line			2045	2160			
Sand (Big Injun)			2160	2335	Gas at	2230-2238	
Slate			2335	2893			
Sand (Gordon)			2893	2927	Gas at	2907-2925	25Mcf
Slate			2927	3220			
Sand (Fifth)			3220	3240	Gas at	3225	
Slate			3240	3700			
Line			3700	4200			
Sand			4200	4220			
Slate			4220	4752			
Sand (Benson)			4752	4768	Gas at	4762	
Line & Sand			4768	5215			
Slate			5215	5280			
			Total Depth	5280			

2045
1032
1013

2082
1032
1050

Date June 17, 196

APPROVED James Masson, Over

By William Coy
(Title)