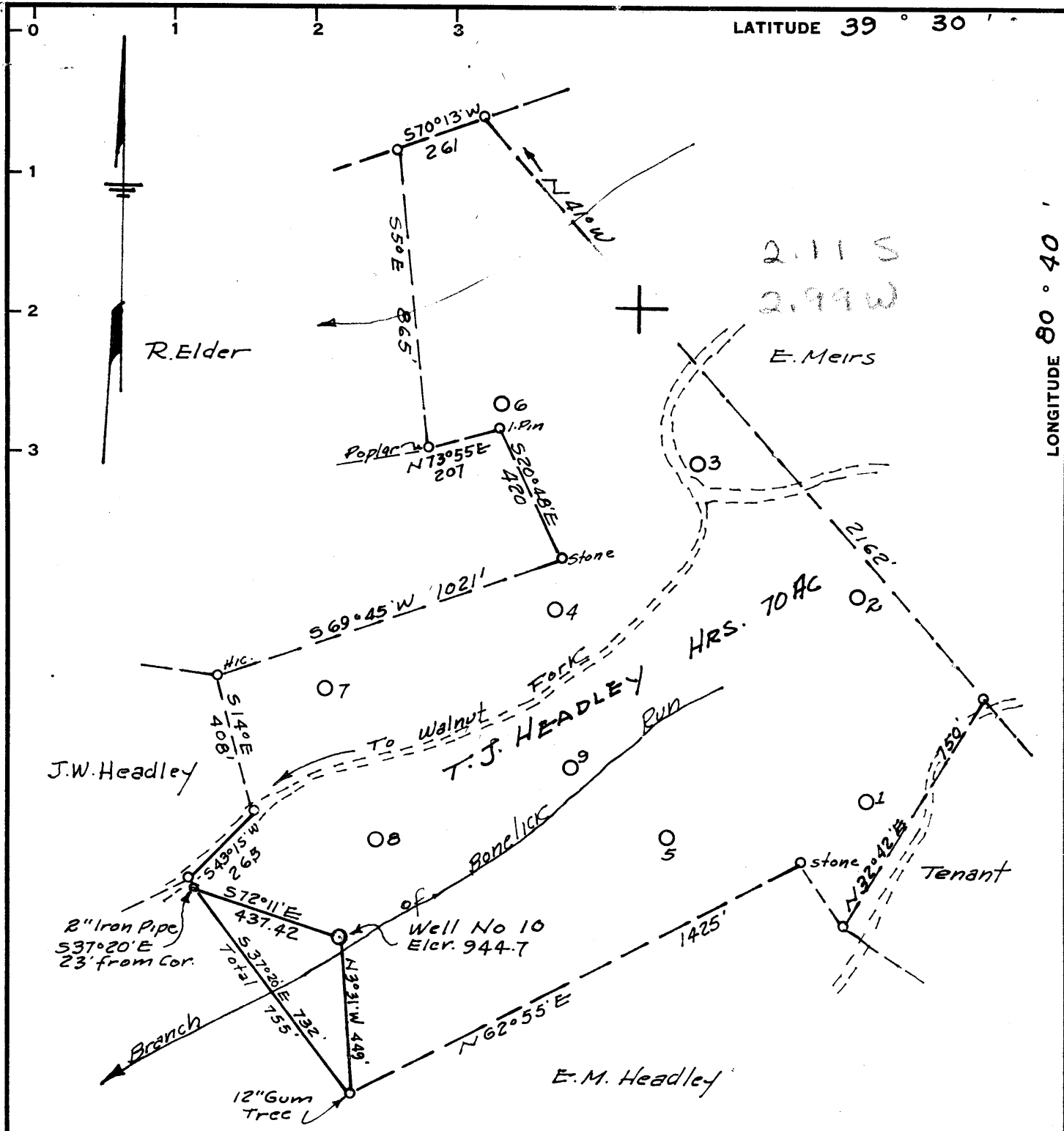


M

LATITUDE 39° 30'

LONGITUDE 80° 40'

P



Minimum Error of Closure 1 in 200

Source of Elevation Concrete Floor of Tyler Permit No 446A Eler. 1245.31

- Fracture
- New Location
- Drill Deeper
- Abandonment

I, the undersigned, hereby certify that this map is correct to the best of my knowledge and belief and shows all the information required by paragraph 6 of the rules and regulations of the oil and gas section of the mining laws of West Virginia.

Signed: Anders L. Marshall, Surveyor  
Squares: N S E W

Map No.

Company Quaker State Oil & Refg. Corp.  
 Address Box 1327 Parkersburg, W. Va.  
 Farm T. J. Headley Hrs.  
 Tract \_\_\_\_\_ Acres 70 Lease No. \_\_\_\_\_  
 Well (Farm) No. 10 Serial No. \_\_\_\_\_  
 Elevation (Spirit Level) 944.7  
 Quadrangle Centerpoint NW  
 County Tyler District McElroy  
 Engineer H. J. [Signature]  
 Engineer's Registration No. 2492  
 File No. \_\_\_\_\_ Drawing No. \_\_\_\_\_  
 Date Nov. 13, 1964 Scale 1"=400'

STATE OF WEST VIRGINIA  
DEPARTMENT OF MINES  
OIL AND GAS DIVISION  
CHARLESTON

### WELL LOCATION MAP

FILE NO. TYL-388

+ Denotes location of well on United States Topographic Maps, scale 1 to 62,500, latitude and longitude lines being represented by border lines as shown.

- Denotes one inch spaces on border line of original tracing.



STATE OF WEST VIRGINIA  
DEPARTMENT OF MINES  
OIL AND GAS DIVISION 27

Quadrangle Centerpoint

Permit No. TYL - 388

**WELL RECORD**

Oil or Gas Well Oil

Company Quaker State Oil Refining Corporation  
Address P. O. Box 1327, Parkersburg, W. Va.  
Farm T. J. Headley Heirs Acres 70  
Location (waters) Bonelick Run  
Well No. 10 Elev. 944.7'  
District McElroy County Tyler  
The surface of tract is owned in fee by T. J. Headley Heirs  
Middlebourne, W. Va. Address \_\_\_\_\_  
Mineral rights are owned by Same  
Address \_\_\_\_\_

Casing and Tubing	Used in Drilling	Left in Well	Packers
Size			Kind of Packer
16			
13			
10 5/8"	433'	—	Size of
8 3/4"	1215'	—	
7"	1915'	1915'	Depth set
5 3/16"			
3			Perf. top
2			Perf. bottom
Liners Used			Perf. top
			Perf. bottom

Drilling commenced 12-22-64  
Drilling completed 1-23-65

Date Shot \_\_\_\_\_ From \_\_\_\_\_ To \_\_\_\_\_  
With \_\_\_\_\_

Open Flow /10ths Water in \_\_\_\_\_ Inch  
/10ths Merc. in \_\_\_\_\_ Inch

Volume \_\_\_\_\_ Cu. Ft.

Rock Pressure \_\_\_\_\_ lbs. \_\_\_\_\_ hrs.

Oil \_\_\_\_\_ bbls., 1st 24 hrs.

WELL ACIDIZED \_\_\_\_\_

WELL FRACTURED Fraced 2-10-65 with 3000# sand & 135 bbl. of crude oil

CASING CEMENTED None SIZE \_\_\_\_\_ No. Ft. \_\_\_\_\_ Date \_\_\_\_\_

COAL WAS ENCOUNTERED AT 203 FEET show INCHES  
672 FEET 24 INCHES FEET INCHES  
FEET INCHES FEET INCHES

RESULT AFTER TREATMENT 2.5 b.o.p.d.

ROCK PRESSURE AFTER TREATMENT \_\_\_\_\_

Fresh Water 25 Feet Salt Water \_\_\_\_\_ Feet

Formation	Color	Hard or Soft	Top	Bottom	Oil, Gas or Water	Depth	Remarks
Clay			0	13			
Stone			13	25			
Shale			25	45			
Red Rock			45	54			
Lime			54	68			
Shale			68	80			
Red Rock			80	94			
Shale			94	108			
Sand			108	120			
Shale & Shells			120	129			
Red Rock			129	144			
Lime			144	175			
Shale			175	210	(Show of coal 203)		
Lime			210	218			
Shale & Lime Shells			218	230			
Red Rock			230	233			
Shale & Shells			233	261			
Lime			261	268			
Shale & Lime Shells			268	292			
Red Rock			292	296			
Lime (sand)			296	323			
Shale			323	333			
Sand			333	345			
Shale			345	350			
Sand			350	364			
Shale			364	377			
Red Rock			377	389			
Lime			389	413			
Shale			413	430			
Lime			430	470			
Red Rock			470	480			



Formation	Color	Hard or Soft	Top 27	Bottom	Oil, Gas or Water	Depth Found	Remarks
R. Red & Shale			480	490			
Shale & Lime			490	501			
Shale			501	510			
Lime			510	555			
Shale & Shells			555	570			
Sand			570	586			
Shale			586	600			
Lime & Shale			600	609			
Shale			609	628			
R. Red			628	637			
Shale			637	664			
Lime			664	672			
Pgh. Coal			672	674			
Shale			674	678			
Lime			678	693			
Shale			693	743			
Sand			743	767			
Shale			767	769			
Lime			769	778			
Shale			778	794			
Red Rock			794	807			
Lime & Shale			807	855			
Red Rock			855	878			
Lime & Shale			878	894			
Red Rock			894	909			
Shale			909	1016			
Lime			1016	1022			
Shale & Shells			1022	1060			
Sand			1060	1075			
Shale (Black)			1075	1092			
Sand (Lime)			1092	1108			
Shale & Shells			1108	1206			
Big Dunkard Sand			1206	1236			
Shale			1236	1244			
Lime			1244	1251			
Shale & Lime			1251	1265			
Shale			1265	1277			
Gas Sand			1277	1328			
Shale			1328	1353			
Sand (Lime)			1353	1365			
Shale & Lime			1365	1384			
Shale			1384	1402			
1st Sand			1402	1432			
Shale & Sand			1432	1549			
Sand			1549	1586			
Shale (Dark)			1586	1635			
Lime Shell			1635	1640			
Sandy Shale & Lime Shell			1640	1695			
Shale			1695	1712			
Lime			1712	1722			
Sandy Shale			1722	1730			
Shale			1730	1760			
Red Rock			1760	1810			
Sand			1810	1820			
R. Rock & Shale			1820	1858			
Lime			1858	1870			
Shale P.C.			1870	1885			
Sand (Hard) Blue Monday			1885	1915			
Big Lime			1915	1995			
Sand B			1995	2058			
Sand (Soft)			2058	2080			
Shale			2080	2088			
Sand (Hard)			2088	2141			
Shale			2141	2143			
Sand			2143	2148			
Shale			2148	2164	(T. D.)		

1885  
 945  
 ---  
 940

Date March 23, 1965

APPROVED Quaker State Oil Refining Corporation Owner

By Thomas H. Richards  
 (Title)  
 Thomas H. Richards - Engineer