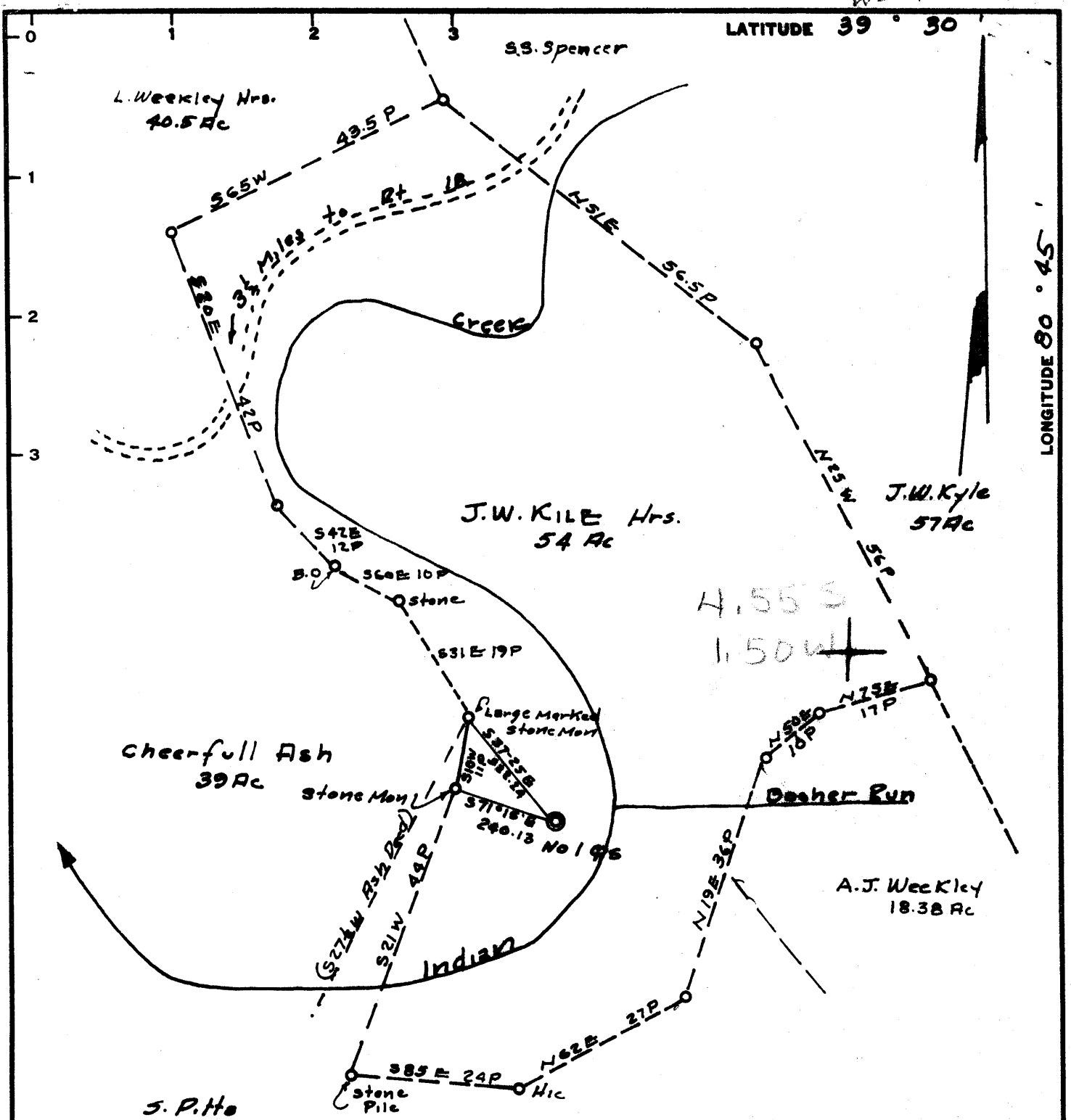


WS 9-7-65



Minimum Error of Closure 1 in 200'  
 Source of Elevation USGS Elev. At Road Intersection  
N 1400± from Well Location Elev. 775.0

I, the undersigned, hereby certify that this map is correct to the best of my knowledge and belief and shows all the information required by paragraph 6 of the rules and regulations of the oil and gas section of the mining laws of West Virginia.

- Fracture.....
- New Location.....
- Drill Deeper.....
- Abandonment.....

Signed: *H. F. Johnston*  
 Squares:            

Company Quaker State Oil Refg. Corp  
 Address P.O. Box 1327 Parkersburg, W. Va.  
 Farm J.W. Kyle Hrs  
 Tract \_\_\_\_\_ Acres 54 Lease No. \_\_\_\_\_  
 Well (Farm) No. 1-96 Serial No. \_\_\_\_\_  
 Elevation (Spirit Level) 730.5  
 Quadrangle West Union NE  
 County Tyler District McElroy  
 Engineer *H. F. Johnston*  
 Engineer's Registration No. 2492  
 File No. \_\_\_\_\_ Drawing No. \_\_\_\_\_  
 Date Sept 1, 1965 Scale 1" = 320'

STATE OF WEST VIRGINIA  
 DEPARTMENT OF MINES  
 OIL AND GAS DIVISION  
 CHARLESTON

**WELL LOCATION MAP**

FILE NO. TYL-391

+ Denotes location of well on United States Topographic Maps, scale 1 to 62,500, latitude and longitude lines being represented by border lines as shown.

- Denotes one inch spaces on border line of original tracing.



STATE OF WEST VIRGINIA  
DEPARTMENT OF MINES  
OIL AND GAS DIVISION 13

Rotary   
Spudder   
Cable Tools   
Storage

Quadrangle West Union  
Permit No. TYL-391

**WELL RECORD**

Oil or Gas Well  oil  
DRY show  
(KIND)

Company Quaker State Oil Refining Corporation  
Address P. O. Box 1327, Parkersburg, W. Va.  
Farm J. W. Kile Heirs Acres.....  
Location (waters) Indian Creek  
Well No. 1 (One) Elev. 730.5  
District McElroy County Tyler  
The surface of tract is owned in fee by.....  
Address.....  
Mineral rights are owned by Playford Kile (Agent)  
Address Rt. 2, Sistersville, W. Va. 412  
Drilling commenced 1-4-66  
Drilling completed 1-28-66  
Date Shot -- From..... To.....  
With.....

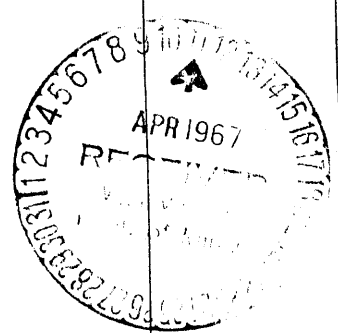
Casing and Tubing	Used in Drilling	Left in Well	Packers
Size			Kind of Packer.....
16			
13			Size of.....
10	178	--	Depth set.....
8 1/4	912	--	
6 3/4	1620	1620	Perf. top.....
5 3/16			Perf. bottom.....
3			Perf. top.....
2			Perf. bottom.....
Liners Used.....			

Open Flow /10ths Water in..... Inch  
/10ths Merc. in..... Inch  
Volume - 0 - Cu. Ft.  
Rock Pressure..... lbs..... hrs.  
Oil..... bbls., 1st 24 hrs.  
WELL ACIDIZED (DETAILS) No  
WELL FRACTURED (DETAILS) No

Attach copy of cementing record.  
CASING CEMENTED NONE SIZE..... No. Ft..... Date.....  
Amount of cement used (bags).....  
Name of Service Co.....  
COAL WAS ENCOUNTERED AT 100 FEET Show INCHES  
410 FEET 12 INCHES FEET INCHES  
FEET INCHES FEET INCHES

RESULT AFTER TREATMENT (Initial open Flow or bbls.) --  
ROCK PRESSURE AFTER TREATMENT..... HOURS.....  
Fresh Water 20' Feet..... Salt Water 1552' Feet.....  
Producing Sand..... Depth.....

Formation	Color	Hard or Soft	Top	Bottom	Oil, Gas or Water	Depth	Remarks
Clay			0	14			
Soap stone			14	20			
Sand			20	28	Water		
Shale			28	40			
Red rock			40	48			
Lime			48	55			
Shale & lime shells			55	84			
Gritty Lime			84	94			
Shale (Dark)			94	122	Show coal @ 100'		
Lime			122	130			
Shale & lime shells			130	140			
Lime			140	150			
Sand			150	157			
Shale			157	167			
Red rock			167	176			
Shale			176	185			
Lime			185	222			
Shale			222	225			
Lime			225	247			
Shale			247	270			
Lime			270	285			
Shale & lime shells			285	355			
Shale (Dark)			355	383			
Lime			383	397			
Dark shale			397	410			
Coal			410	411	Pittsburgh Coal		
Shale			411	435			
Lime			435	460			
Sand			460	480			
Shale & Shells			480	500			



cc: G. S. Wood  
D. Van Dine  
MAY 4 1967

(over)

Formation	Color	Hard or Soft	Top 13	Bottom	Oil, Gas or Water	Depth Found	Remarks
Red rock			500	515			
Shale & shells			515	538			
Red rock			538	554			
Shale			554	585			
Red rock			585	690			
Sand <i>M...</i>			690	720	Show oil 703-710		
Lime <i>...</i>			720	750			
Sand <i>1st L.R.</i>			750	770			
Shale			770	785			
Lime			785	815			
Shale			815	820			
Lime			820	837			
Sand <i>L.D.</i>			837	860			
B. Shale			860	898			
Sand <i>Big Bank</i>			898	920			
Shale			920	948			
Sand			948	960	1614		
Shale			960	1002	736		
Sand			1002	1022	<u>883</u>		
Slate			1022	1038			
Sand <i>2nd L.R.</i>			1038	1100			
Shale			1100	1118			
Sand			1118	1130			
Slate			1130	1180			
Shale & shells			1180	1234			
Sand			1234	1242			
Black slate			1242	1290			
Sand <i>...</i>			1290	1320			
Slate			1320	1355			
Lime			1355	1375			
Sand <i>3rd L.R.</i>			1375	1437			
Shale			1437	1452			
Sand			1452	1470			
Shale			1470	1502			
Red rock			1502	1552	Maxon Sand		
Sand			1552	1570	Show of oil		
Shale			1570	1586			
Lime <i>...</i>			1586	1604			
Shale <i>...</i>			1604	1615			
Lime			1615	1718	Big Lime		
Sand			1718	1758			
Shale			1758	1765			
Sand			1765	1846	INJUN		
Shale			1846	1850			
Sand			1850	1860			
Shale			1860	1869			
Sand			1869	1880			
Shale			1880	1915			
				1915	Total Depth		

LOGGED BY BIRDWELL 1-31-66:

G R  
Density  
Neutron  
Induction

Date February 2, 1966

APPROVED Quaker State Oil Refining Corporation Owner  
By Thomas H. Richard  
(Title) Engineer