

*W. H. Steet*

New Location   
 Drill Deeper   
 Abandonment  11-3-75

Elev. ref.: - Mouth of Willow Fork = 746'  
 Error in Closure: - Less than 1 in 200

Company JERRY C. OLDS  
 Address 625 High St. Washington D.C. 20005  
 Farm McConnell Heirs  
 Tract \_\_\_\_\_ Acres 208 Lease No. \_\_\_\_\_  
 Well (Farm) No. One Serial No. \_\_\_\_\_  
 Elevation (Spirit Level) 763  
 Quadrangle New Martinsville SC  
 County Tyler District Ellsworth  
 Engineer W. H. Steet  
 Engineer's Registration No. 1227  
 File No. \_\_\_\_\_ Drawing No. \_\_\_\_\_  
 Date July 18, 1966 Scale 1" = 30 P = 495'

STATE OF WEST VIRGINIA  
 DEPARTMENT OF MINES  
 OIL AND GAS DIVISION  
 CHARLESTON

WELL LOCATION MAP  
 FILE NO. TYL-406-P

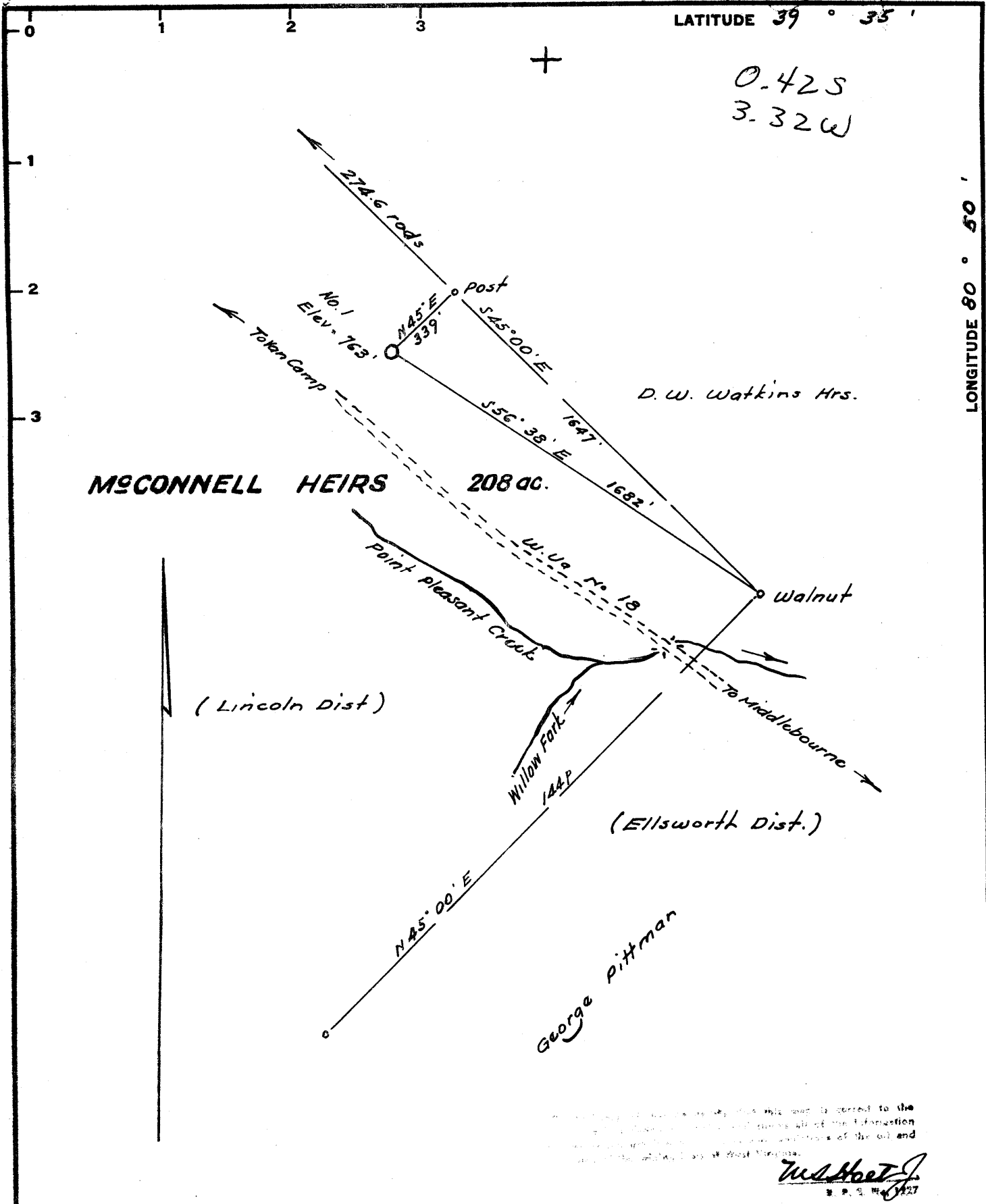
+ Denotes location of well on United States Topographic Maps, scale 1 to 62,500, latitude and longitude lines being represented by border lines as shown.

- Denotes one inch spaces on border line of original tracing. **47-095**

LATITUDE 39 ° 35 '

LONGITUDE 80 ° 50 '

0.425  
3.32W



I hereby certify that this map is correct to the best of my knowledge and belief, and that I am a duly licensed Professional Engineer in the State of West Virginia.

*W. H. Hoet Jr.*  
S. P. S. No. 1227

New Location.....  
 Drill Deeper.....  
 Abandonment.....

Elev. ref.: - Mouth of Willow Fork = 746'  
 Error in Closure: - Less than 1 in 300'

Company LINCOLN OIL & GAS CO.  
 Address P.O. Box 236, West Union, West Va.  
 Farm McConnell Heirs  
 Tract \_\_\_\_\_ Acres 208 Lease No. \_\_\_\_\_  
 Well (Farm) No. One Serial No. \_\_\_\_\_  
 Elevation (Spirit Level) 763  
 Quadrangle New Martinsville - SC  
 County Tyler District Ellsworth  
 Engineer W. H. Hoet Jr.  
 Engineer's Registration No. 1227  
 File No. \_\_\_\_\_ Drawing No. \_\_\_\_\_  
 Date July 18, 1966 Scale 1" = 30p = 495'

STATE OF WEST VIRGINIA  
 DEPARTMENT OF MINES  
 OIL AND GAS DIVISION  
 CHARLESTON

WELL LOCATION MAP  
 FILE NO. TYL-406

+ Denotes location of well on United States Topographic Maps, scale 1 to 62,500, latitude and longitude lines being represented by border lines as shown.  
 - Denotes one inch spaces on border line of original tracing.



STATE OF WEST VIRGINIA  
DEPARTMENT OF MINES  
OIL AND GAS DIVISION 7

Rotary   
Spudder   
Cable Tools   
Storage

Quadrangle.....

Permit No. TYL-406

WELL RECORD

Oil or Gas Well  Oil  Gas   
(KING)

Company Lincoln Oil and Gas Co.  
Address West Union, W. Va.  
Farm McConnell Acres 208  
Location (waters).....  
Well No. One Elev. 763  
District Lincoln County Tyler  
The surface of tract is owned in fee by Kimble heirs  
RD#2, New Martinsville, W. Va.  
Mineral rights are owned by McConnell heirs  
Whittier Address California  
Drilling commenced November 10, 1966  
Drilling completed January 28, 1967  
Date Shot From To  
With  
Open Flow /10ths Water in not taken Inch  
/10ths Merc. in Inch  
Volume show Cg. Ft.  
Rock Pressure not taken lbs. hrs.  
Oil show bbla., 1st 24 hrs.  
WELL ACIDIZED (DETAILS) No

Casing and Tubing	Used in Drilling	Left in Well	Packers
Size			
16			Kind of Packer
13			Size of
10			Depth set
8 1/4			
6 1/4	1875		
4 1/2	2265	2265	
5 7/16			
4 1/4			
3			Perf. top 1628
2			Perf. bottom 1636
Liners Used			Perf. top 2178
			Perf. bottom 2180

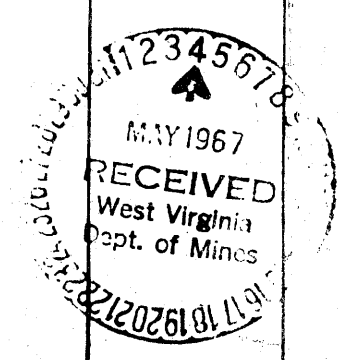
WELL FRACTURED (DETAILS) 50,000 Sand, 900 gal. acid, 1500 Bbl. water

RESULT AFTER TREATMENT (Initial open Flow or bbls.) 1-Bbl per day 100,000 gas *see below*  
ROCK PRESSURE AFTER TREATMENT 460 lbs. 24 HOURS  
Fresh Water  Feet Salt Water  Feet  
Producing Sand  Depth 120 MCF?

Formation	Color	Hard or Soft	Top	Bottom	Oil, Gas or Water	Depth	Remarks
Shale	Gray	Soft	0	110			
Shl. w/RR	Gray & Red	Soft	110	300			Injun sand 1624 - 1630
Sd. w/Shale	Gray	Med.	300	460			40,000 gas 1 bbl oil after Frac
Sandy Shale	Dark Gray	Med.	460	538			
Shale	Blue	Med.	538	730			
Shale	Gray & Red	Soft	730	945			Berea sand 2176 - 2182
Shl. w/Lime	Gray	Med. & Hard	945	1040			80,000 gas 465 pounds pressure after Frac
Shl. w/Lime	Gray	Med. & Hard	1040	1160			
Sand	White	Hard	1160	1230			
Sand	White	Hard	1230	1425			
Shale	Black	Med.	1425	1520			
Sd. w/Lime	Brown	Hard	1520	1570			
Sand	Gray	Hard	1570	1595			
Sand	White	Hard	1595	1640			
Sand	White	Hard	1640	1695			
Sandy Shale	Gray	Hard	1695	1733			
Lime	Gray	Hard	1733	1755			
Lime	Gray	Hard	1755	1802			
Sand	White	Hard	1802	1825			
Sand	White	Hard	1825	1850			
Shale	Dark Gray	Med.	1850	1875			
Gritty Lime			1875	1925			
Slate & Shells			1925	1962			
Lime		Hard	1962	2090			
Broken Lime	<i>Berea?</i>		2090	2260			
Pink Lime			2260	2365			
Slate & Shells			2365	2410			
Lime		Hard	2410	2440			

*2176*  
*763*  
*1413*

*1520*  
*763*  
*-757*



Formation	Color	Hard or Soft	Top <sup>7</sup>	Bottom	Oil, Gas or Water	Depth Found	Remarks
Sand			2440	2455			
Slate & Shells			2455	2500			
Lime			2500	2575			
Slate & Shells			2575	2618			
Sand			2618	2632			
Slate & Shells			2632	3152	Show of oil	2620	
Sand <i>Fifth sand?</i>			3152	3174	Show of gas		
Slate & Shells			3174	3224			
T. D.							

Date \_\_\_\_\_, 19\_\_\_\_

APPROVED \_\_\_\_\_, Owner

By \_\_\_\_\_ (Title)