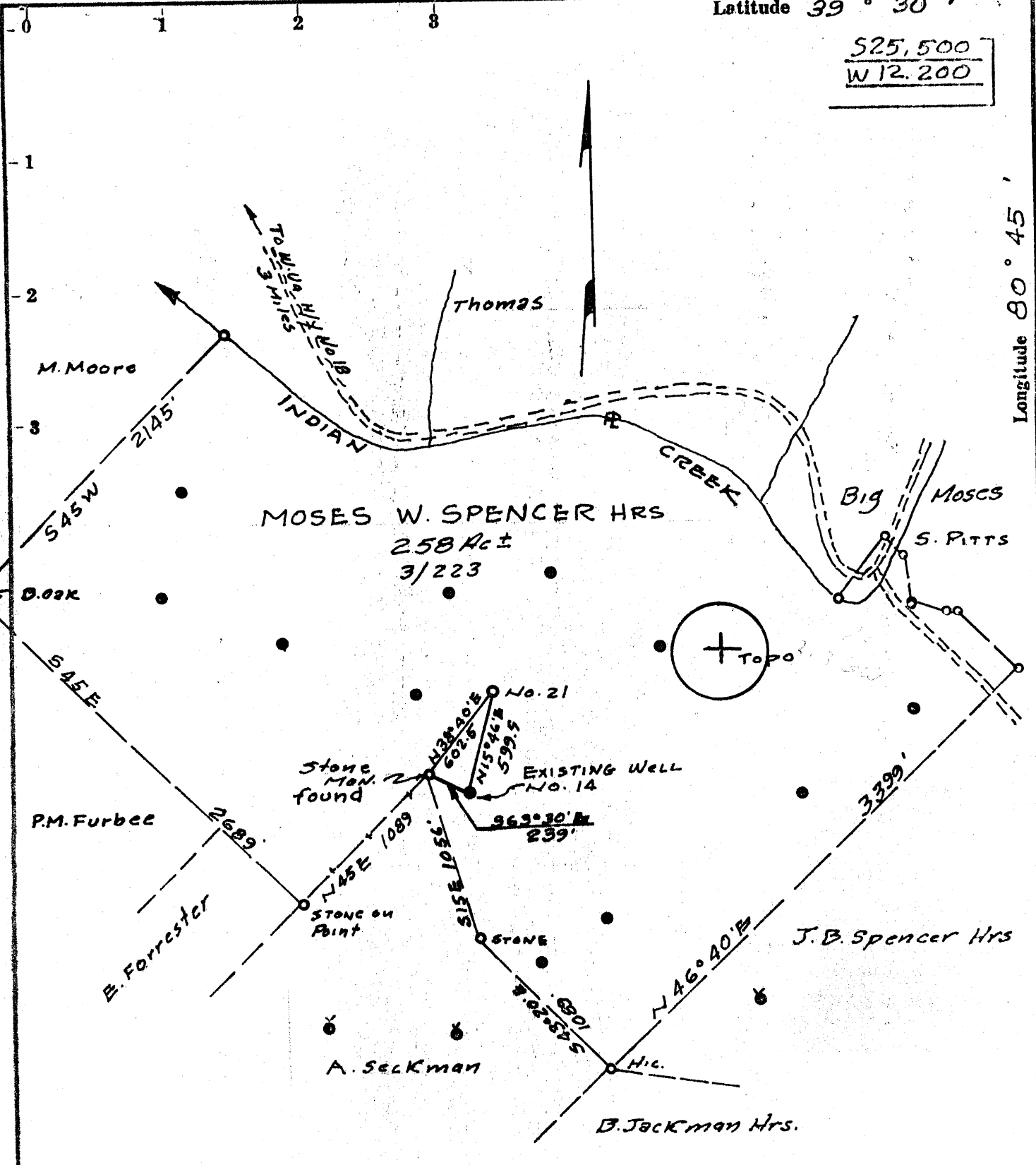


525,500  
W 12,200



Longitude 80° 45'

- Fracture....
- Redrill....
- New Location.
- Drill Deeper.....
- Abandonment.....

Source of Elevation USGS BM F135 S67°W 4000' of location El. = 725

I, the undersigned, hereby certify that this map is correct to the best of my knowledge and belief and shows all the information required by paragraph 6 of the rules and regulations of the oil and gas section of the mining laws of West Virginia.

Minimum accuracy, one part in 200

Company QUAKER STATE OIL REFG. CORP.  
 Address P.O. Box 1327 PARKERSBURG, W.Va.  
 Farm MOSES W. SPENCER HRS  
 Tract \_\_\_\_\_ Acres 258 Lease No. \_\_\_\_\_  
 Well (Farm) No. 21 Serial No. \_\_\_\_\_  
 Elevation (Spirit Level) 1084. Surface  
 Quadrangle West Union NE  
 County Tyler District Mc Elroy  
 Surveyor or Engineer Arden S. Marshall Sur  
 Surveyor's or Engineer's Registration No. 3  
 File No. \_\_\_\_\_ Drawing No. \_\_\_\_\_  
 Date Dec 2, 1971 Scale 1" = 800'

STATE OF WEST VIRGINIA  
DEPARTMENT OF MINES  
OIL AND GAS DIVISION  
CHARLESTON

WELL LOCATION MAP  
FILE NO. File - 430

+ Denotes location of well on United States Topographic Maps, scale 1 to 62,500, latitude and longitude lines being represented by border lines as shown.  
 — Denotes one inch spaces on border line of original tracing.



**RECEIVED**

JUN 13 1972

STATE OF WEST VIRGINIA  
DEPARTMENT OF MINES

OIL & GAS DIVISION  
DEPT. OF MINES

**Oil and Gas Division**

**WELL RECORD**

Quadrangle West Union

Permit No. Tyl-430

Rotary  Cable  Recycling  Water Flood \_\_\_\_\_ Disposal \_\_\_\_\_  
Oil  Gas \_\_\_\_\_ Comb. \_\_\_\_\_ Storage \_\_\_\_\_  
(Kind)

Company Quaker State Oil Refining Corporation  
Address P.O. Box 1327, Parkersburg, W.Va.  
Farm M. V. Spencer Heirs Acres 258  
Location (waters) Indian Creek  
Well No. 21 Elev. 1084  
District McElroy County Tyler  
The surface of tract is owned in fee by \_\_\_\_\_  
M. V. Spencer Heirs  
Address Alma, W. Va.  
Mineral rights are owned by Quaker State  
Address \_\_\_\_\_  
Drilling Commenced 12-13-71  
Drilling Completed 2-3-72  
Initial open flow \_\_\_\_\_ cu. ft. \_\_\_\_\_ bbls.  
Final production \_\_\_\_\_ cu. ft. per day 5 bbls.  
Well open 24 hrs. before test 2 RP.

Casing and Tubing	Used in Drilling	Left in Well	Cement fill up Cu. ft. (Sks.)
Size			
20-16			
Cond.			
13-10"	333	333	cmt. to surface
9 5/8			
8 5/8			
7	2014	2014	
5 1/2			
4 1/2			
3			
2			
Liners Used			

Well treatment details:

Shot 100 quarts Nitro  
2122 - 2160

Attach copy of cementing record.

Coal was encountered at None Feet \_\_\_\_\_ Inches \_\_\_\_\_  
Fresh water None Feet \_\_\_\_\_ Salt Water None Feet \_\_\_\_\_  
Producing Sand Big Injun Depth 2072 2122-2160

Formation	Color	Hard or Soft	Top Feet	Bottom Feet	Oil, Gas or Water	* Remarks
Shale			0'	170'		
Sand & Shale			170'	332'		
Shale			332'	498'		
Sand			498'	615'		
Shale			615'	746'		
Sand			746'	760'		
Shale			760'	808'		
Sand			808'	878'		
Shale			878'	1076'		
Sand			1076'	1100'		
Shale			1100'	1280'		
Sand			1280'	1302'		
Shale			1302'	1382'		
Sand			1382'	1472'		
Shale			1472'	1604'		
Sand (Broken)			1604'	1695'		
Shale			1695'	1742'		
Sand (Broken)			1742'	1805'		
Shale			1805'	1850'		
Sand (Broken)			1850'	1865'		
Shale			1865'	1950'		
Little Lime			1950'	1964'		
Pencil Cave			1964'	1980'		

(over)

\* Indicates Electric Log tops in the remarks section.

JUN 16 1972

Formation	Color	Hard or Soft	Top Feet <b>3</b>	Bottom Feet	Oil, Gas or Water	* Remarks
Big Lime			1980'	2040'		
Keener			2040'	2072'		
<u>Big Injun</u>			2072'	2238'		
					Gas Pay 2088' - 2125'	
					<u>Oil Pay 2125' - 2152'</u>	

Date June 12, 1972

APPROVED QUAKER STATE OIL REFINING CORP, Owner

By Jan Bush  
(Title) Geologist