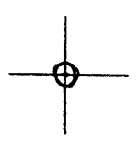


LATITUDE 39° 32' 30"

LONGITUDE



7'5 OGIS topo location

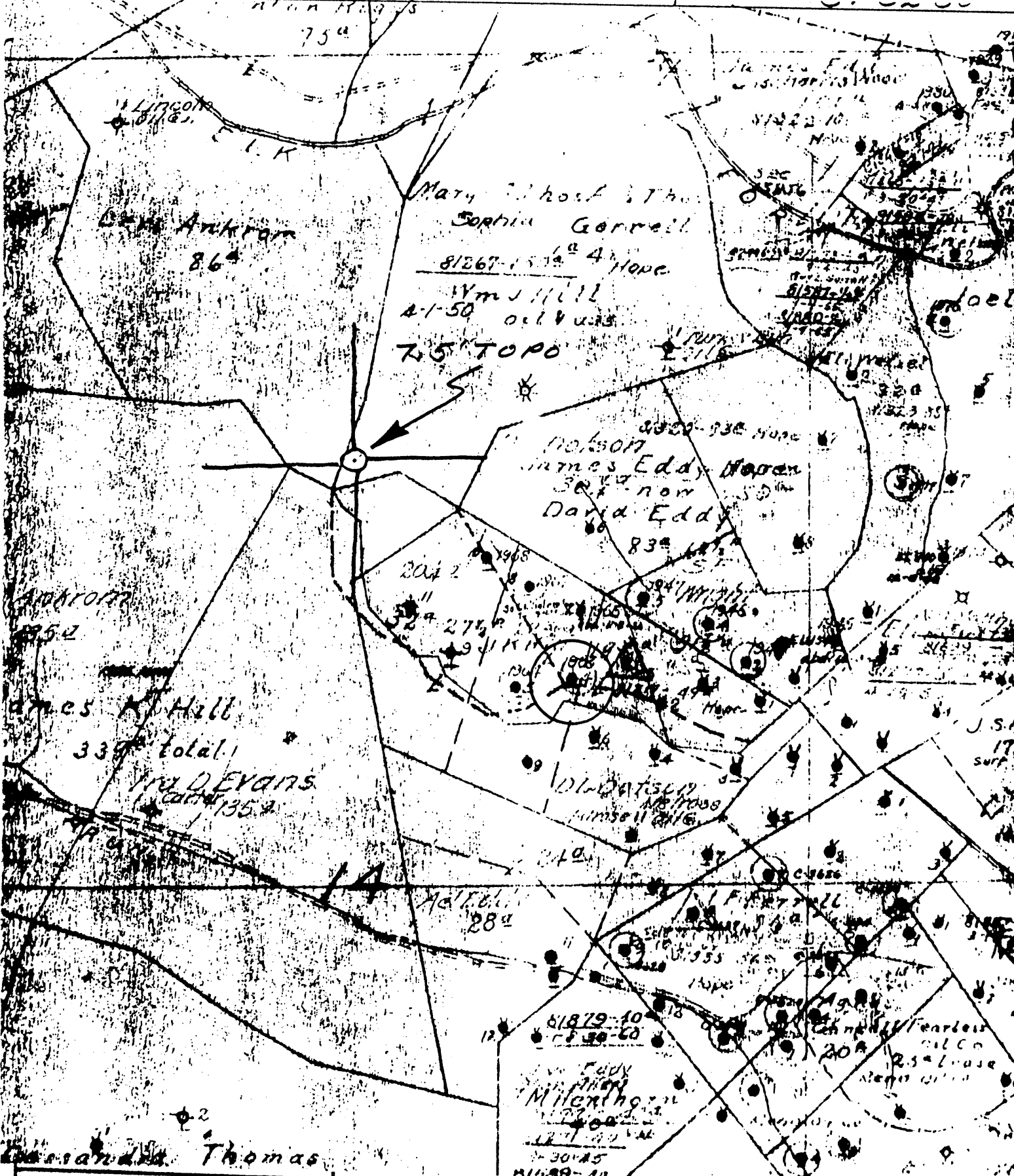
7.5' 10c	<u>1.325</u>	15' 10c	<u>4.205</u>
	<u>1.97W</u>	(calc.)	<u>1.97W</u>

Company \_\_\_\_\_  
 Farm JK Hill 4  
 New Martinsville SC  
 Quad PORTERS FALLS 7 1/2  
 County TYLER  
 District ELLSWORTH

WELL LOCATION MAP

File No. 095 - 579

WAD: 70354



(+) DENOTES LOCATION OF WELL ON UNITED STATES TOPOGRAPHIC MAPS

FORM IV-6 (8-78)

N56 N6 W14

STATE OF WEST VIRGINIA DEPARTMENT OF MINES OIL AND GAS DIVISION

DATE Jan 2 '79

OPERATOR'S WELL NO. 4

API WELL NO. 47-095-0579-

STATE COUNTY PERMIT

WELL TYPE: OIL  GAS  LIQUID INJECTION  WASTE DISPOSAL

(IF "GAS", PRODUCTION  STORAGE  DEEP  SHALLOW )

LOCATION: ELEVATION N/A WATER SHED ELK FORK

DISTRICT ELLSWORTH COUNTY TYLER

QUADRANGLE PORTERS FALLS 7.5

SURFACE OWNER \_\_\_\_\_ ACREAGE \_\_\_\_\_

OIL & GAS ROYALTY OWNER \_\_\_\_\_ LEASE NO. \_\_\_\_\_ LEASE ACREAGE \_\_\_\_\_

PROPOSED WORK: DRILL  CONVERT  DRILL DEEPER  REDRILL  FRACTURE OR STIMULATE  PLUG OFF OLD FORMATION  PERFORATE NEW FORMATION  OTHER PHYSICAL CHANGE IN WELL (SPECIFY) \_\_\_\_\_

PLUG AND ABANDON  CLEAN OUT AND REPLUG

TARGET FORMATION \_\_\_\_\_ ESTIMATED DEPTH \_\_\_\_\_

WELL OPERATOR Pennzoil Company DESIGNATED AGENT James A. Hill

ADDRESS P. O. Box 1588 ADDRESS P. O. Box 1588

Parkersburg, WV 26101 Parkersburg, WV 26101

J.K. Hill - 4

J. K. HILL NO. 4 WELL.

Not located.

Ellsworth District, Tyler County, W. Va.  
Elk Fork Oil & Gas Co.  
Elk Fork pool, near Kidwell.

70354 → 095  
579  
Location on Porters  
Falls 7 1/2'

7

Top.

Big Injan Sand (first pay, 1957')

1954

6650-560-64

J.K. Hill # 4

1963 NAME *W. J. Hill* LEASE NO. *5044* AGRES. *12* RECORD *12* W. DISTRICT *4* PINENEBOUR

Diameter of Type		County		Well No.		Name		Lease No.		Agrees		Record		District		Pinenebour	
13 1/2 in. Casing	1927	15	15	15	15	15	15	15	15	15	15	15	15	15	15	15	15
10 in. Casing	1927	15	15	15	15	15	15	15	15	15	15	15	15	15	15	15	15
8 1/2 in. Casing	1927	15	15	15	15	15	15	15	15	15	15	15	15	15	15	15	15
6 1/2 in. Casing	1927	15	15	15	15	15	15	15	15	15	15	15	15	15	15	15	15
4 1/2 in. Casing	1927	15	15	15	15	15	15	15	15	15	15	15	15	15	15	15	15
2 in. Tubing	1927	15	15	15	15	15	15	15	15	15	15	15	15	15	15	15	15
2 in. Tubing	1927	15	15	15	15	15	15	15	15	15	15	15	15	15	15	15	15
2 in. Tubing	1927	15	15	15	15	15	15	15	15	15	15	15	15	15	15	15	15
SHOOTING																	
Date	Dis.	Sand	Depth	Test	Notes	Pressure	Flow	Temperature	Oil	Water	Gas	Production	Remarks	Size	Make	Set	
12/19/1927	15			1968													
12/17/1927	15																
12/13/1927	30																
4/13/1928	30																
10/26/1928	90																
11/23/1929	90																
5/24/30	90																
Initial Oil Production																	