

Plot

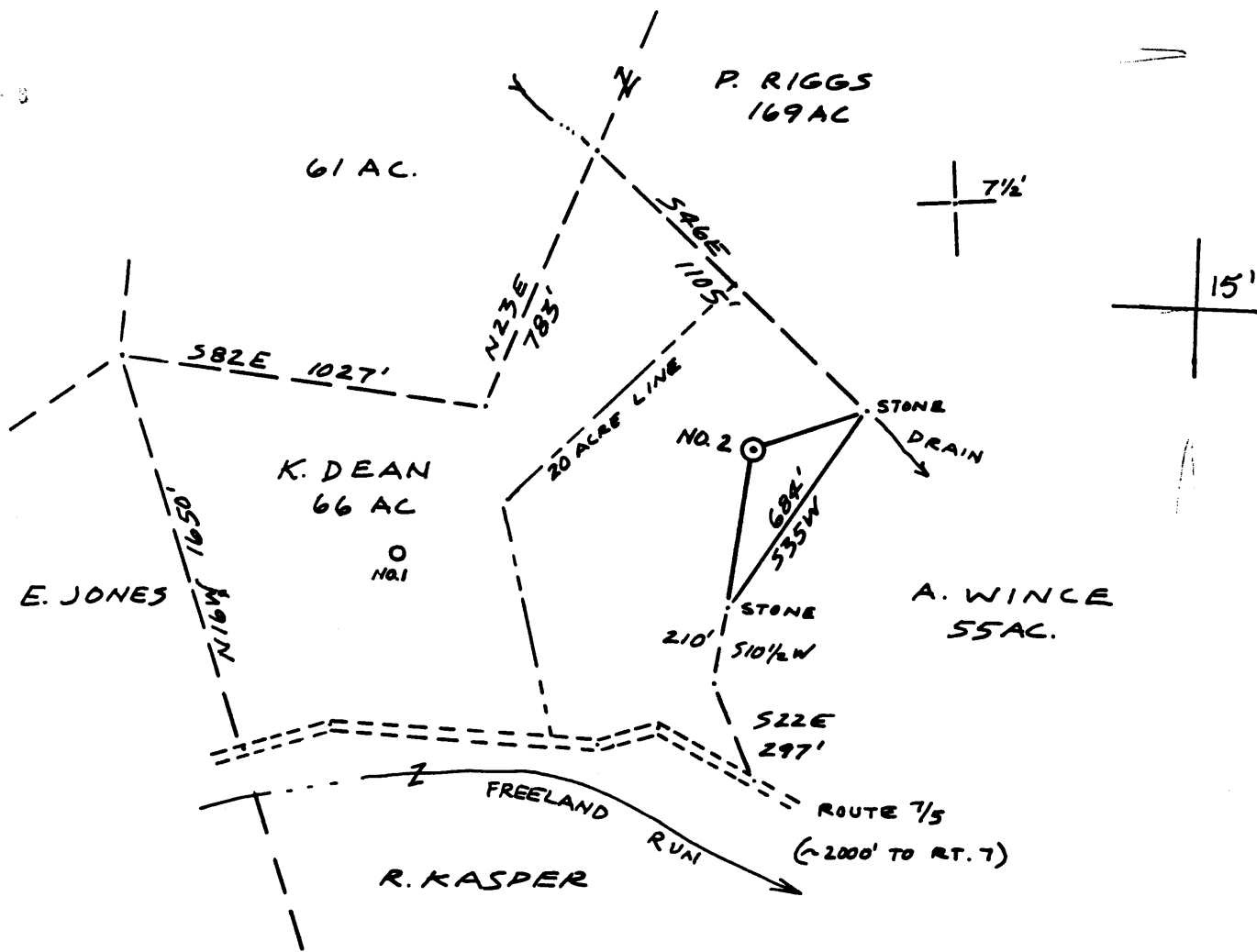
2

3

Latitude 39° 27' 30" (15) 39° 30'

7500' SOUTH
4250' WEST

Longitude 80° 55' 00"



- Fracture...
- Redrill...
- New Location
- Drill Deeper
- Abandonment

Source of Elevation B.M. 732'

I, the undersigned, hereby certify that this map is correct to the best of my knowledge and belief and shows all the information required by paragraph 6 of the rules and regulations of the oil and gas section of the mining laws of West Virginia.

Minimum accuracy, one part in 200

Company L + M OPERATING CO., INC
 Address MARIETTA, OHIO
 Farm K. DEAN (SURFACE) J.M.L. SMITH (OGM)
 Tract _____ Acres 66 Lease No. _____
 Well (Farm) No. 2 Serial No. _____
 Elevation (Spirit Level) 933' WEST UNION 15'
 Quadrangle MIDDLEBOURNE (7 1/2')
 County TYLER District MEADE
 Surveyor or Engineer Neal Hughes
 Surveyor's or Engineer's Registration No. 632
 File No. J.M.L SM-2 Drawing No. _____
 Date MARCH 13, 1980 Scale 1" = 500'

STATE OF WEST VIRGINIA
 DEPARTMENT OF MINES
 OIL AND GAS DIVISION
 CHARLESTON

WELL LOCATION MAP
 FILE NO. 095-0821
CANCELLED

+ Denotes location of well on United States Topographic Maps, scale 1 to 62,500, latitude and longitude lines being represented by border lines as shown.

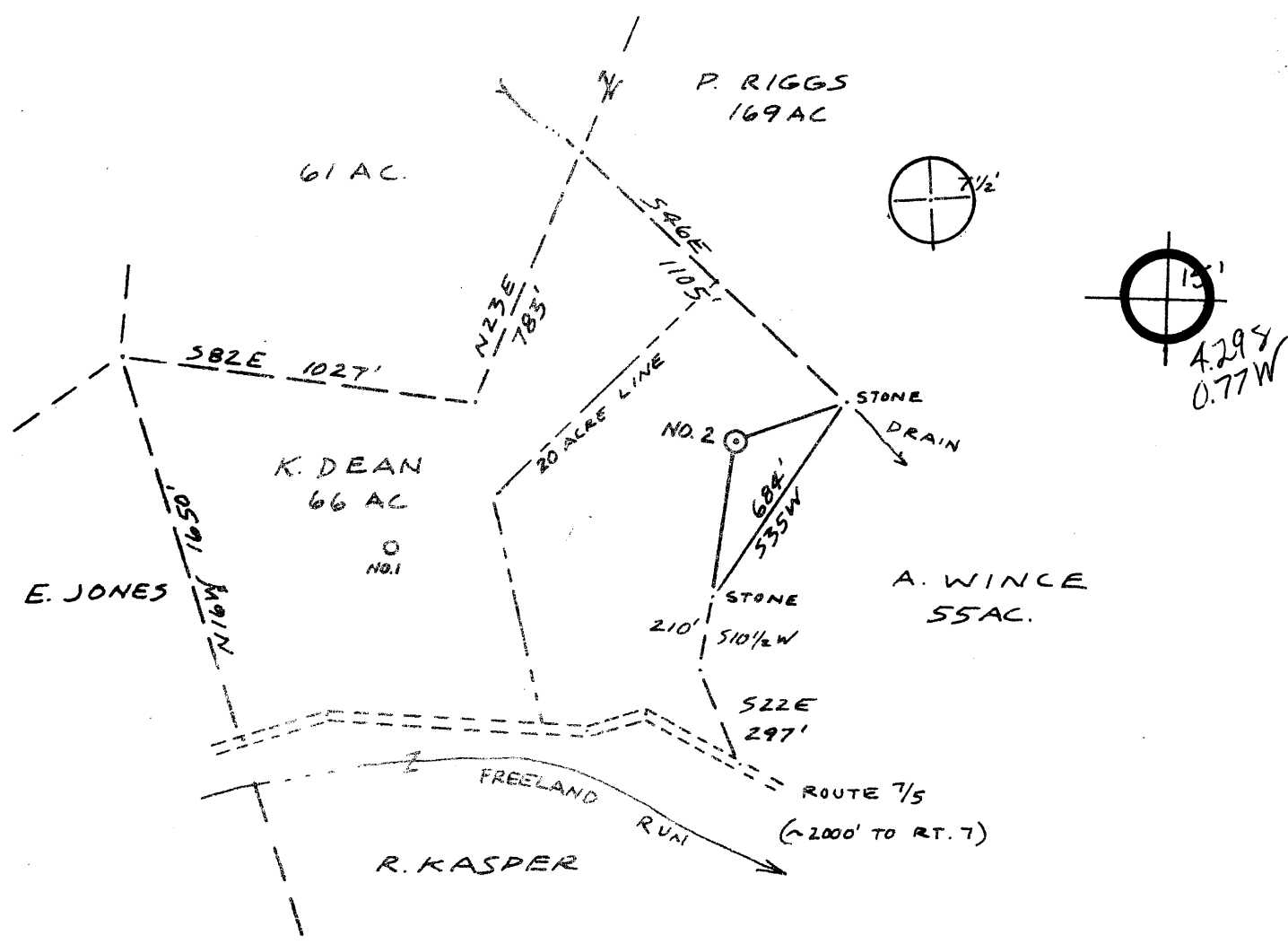
— Denotes one inch spaces on border line of original tracing.

JUN 13 1983

2800 DEVONIAN GORDON

(15) 39 27 30"
 39° 30'
 7500' SOUTH
 4250' WEST

80 55 00"



Tracture
 Red
 New
 Drill
 Mine

B.M. 732'

200

L + M OPERATING CO., INC
 MARIETTA, OHIO
 K. DEAN (SURFACE) J.M.L. SMITH (OGM)
 66
 2
 933' WEST UNION 15'
 MIDDLEBOURNE (7 1/2') NW
 TYLER MEADE
 Neal Hughes
 632
 J.M.L. SM-2
 MARCH 13, 1980 1" = 500'

STATE OF WEST VIRGINIA
 DEPARTMENT OF MINES
 THE ADJUTANT GENERAL
 CHARLESTON
 LOCATION MAP
 095-0821
 2800 DEVONIAN GORDON