

LATITUDE 39° 35'

← 3050'

39 33 05  
80 58 20

LONGITUDE 80° 57' 30"

C. FENNO  
TM 8-17  
71.14 acres

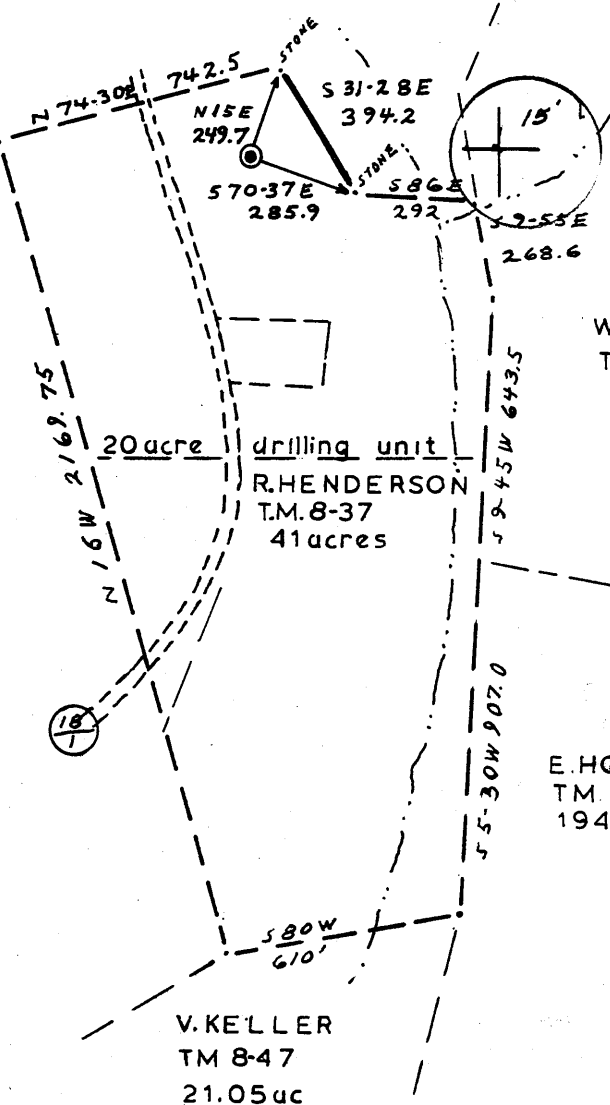
C. MERCER  
T.M. 8-34  
71.34 ac

W. JOHNSON  
TM 8-18  
164.6

drilling unit  
R. HENDERSON  
T.M. 8-37  
41 acres

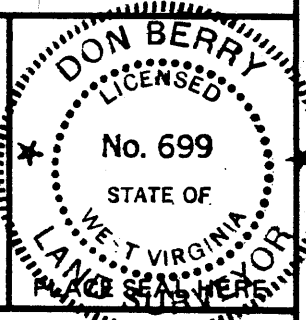
E. HOLLIDAY  
TM 8-38  
194 ac

V. KELLER  
TM 8-47  
21.05 ac



FILE NO. 81 0201  
 DRAWING NO. 1  
 SCALE 1" = 500'  
 MINIMUM DEGREE OF ACCURACY 1:2500  
 PROVEN SOURCE OF ELEVATION C&GS E136 1957  
B.M. = 828.89'

I THE UNDERSIGNED, HEREBY CERTIFY THAT THIS PLAT IS CORRECT TO THE BEST OF MY KNOWLEDGE AND BELIEF AND SHOWS ALL THE INFORMATION REQUIRED BY LAW AND THE REGULATIONS ISSUED AND PRESCRIBED BY THE DEPARTMENT OF MINES.  
 (SIGNED) Don Berry  
 R.P.E. \_\_\_\_\_ L.L.S. 699



(+) DENOTES LOCATION OF WELL ON UNITED STATES TOPOGRAPHIC MAPS  
 FORM IV-6 (8-78)



DATE 24 FEB 1981  
 OPERATOR'S WELL NO. Henderson #1  
 API WELL NO. 47-095-0919  
 STATE COUNTY PERMIT

STATE OF WEST VIRGINIA  
 DEPARTMENT OF MINES  
 OIL AND GAS DIVISION

WELL TYPE: OIL  GAS  LIQUID INJECTION \_\_\_\_\_ WASTE DISPOSAL \_\_\_\_\_  
 (IF "GAS,") PRODUCTION  STORAGE \_\_\_\_\_ DEEP \_\_\_\_\_ SHALLOW   
 LOCATION: ELEVATION 973' WATER SHED PINE RUN  
 DISTRICT LINCOLN COUNTY TYLER  
 QUADRANGLE PADEN CITY New Martinsville 15' & SW  
 SURFACE OWNER R HENDERSON ACREAGE 41 ac  
 OIL & GAS ROYALTY OWNER HENDERSON HEIRS LEASE ACREAGE 112 ac  
 LEASE NO. \_\_\_\_\_  
 PROPOSED WORK: DRILL  CONVERT \_\_\_\_\_ DRILL DEEPER \_\_\_\_\_ REDRILL \_\_\_\_\_ FRACTURE OR STIMULATE  PLUG OFF OLD FORMATION \_\_\_\_\_ PERFORATE NEW FORMATION \_\_\_\_\_ OTHER PHYSICAL CHANGE IN WELL (SPECIFY) \_\_\_\_\_

PLUG AND ABANDON \_\_\_\_\_ CLEAN OUT AND REPLUG \_\_\_\_\_  
 TARGET FORMATION Fifth Sand ESTIMATED DEPTH 3300 FT.  
 WELL OPERATOR Emes Petroleum Co. Inc. DESIGNATED AGENT Hays & Co.  
 ADDRESS 619 Laconia Bldg, Wheeling W. Va. ADDRESS Spencer, W. Va. P.O. Box \_\_\_\_\_

NOV 19 1981



STATE OF WEST VIRGINIA  
DEPARTMENT OF MINES

Oil and Gas Division

WELL RECORD

Quadrangle Paden City  
Permit No. 47-095-0919

Rotary  Oil   
Cable \_\_\_\_\_ Gas   
Recycling \_\_\_\_\_ Comb. \_\_\_\_\_  
Water Flood \_\_\_\_\_ Storage \_\_\_\_\_  
Disposal \_\_\_\_\_ (Kind) \_\_\_\_\_

Company Jim Emes Petroleum Co., Inc.  
Address 619 Laconia Bldg., Wheeling, WV  
Farm R. Henderson Acres 41  
Location (waters) Pine Run  
Well No. 1 Elev. 973  
District Lincoln County Tyler  
The surface of tract is owned in fee by \_\_\_\_\_  
R. Henderson  
Address Sistersville  
Mineral rights are owned by Henderson Heirs  
Address \_\_\_\_\_  
Drilling Commenced 6/25/81  
Drilling Completed 7/1/81  
Initial open flow \_\_\_\_\_ cu. ft. \_\_\_\_\_ bbls.  
Final production \_\_\_\_\_ cu. ft. per day \_\_\_\_\_ bbls.  
Well open \_\_\_\_\_ hrs. before test \_\_\_\_\_ RP.

Casing and Tubing	Used in Drilling	Left in Well	Cement fill up Cu. ft. (Sks.)
Size			
20-16			
Cond.			
13-10"			
9 5/8			
8 5/8	261	261	
7			
5 1/2			
4 1/2		3005	
3			
2			
Liners Used			

Attach copy of cementing record.  
8-5/8 100 SK Cement  
4-1/2 350 SK Cement

Foam frac ST Stage - .500 gal. acid - 300 bbl water  
60,000# 20/40 Sand - 450,000 C.F. Nitrogen  
2st Stage - 500 gal. acid - 250 Bbls water - 40,000# 20/40 Sand, 350,000 C.F. Nitrogen

Coal was encountered at \_\_\_\_\_ Feet \_\_\_\_\_ Inches  
Fresh water \_\_\_\_\_ Feet Salt Water \_\_\_\_\_ Feet  
Producing Sand Berea and Fifth Depth 2793-2798 2816-2819  
2222-2231 2294-2299

*See next page*

Formation	Color	Hard or Soft	Top Feet	Bottom Feet	Oil, Gas or Water	* Remarks
Red-Rock			0	40		
Slate			40	200		
Red Rock			200	246		
Slate			246	734		
Red Rock			734	1160		
Sandy Slate			1160	1940		
Sand			1940	2218		
Berea			2218	2306		
Shale			2306	2408		
Gentz			2408	2414		
Shale			2414	2785		
Fifth			2785	2825		
Shale			2825	3005 T.D.		

(over)

\* Indicates Electric Log tops in the remarks section.



STATE OF WEST VIRGINIA  
DEPARTMENT OF MINES

Oil and Gas Division

WELL RECORD

Quadrangle Paden City  
Permit No. 47-095-0919

Rotary X Oil X  
Cable \_\_\_\_\_ Gas X  
Recycling \_\_\_\_\_ Comb. \_\_\_\_\_  
Water Flood \_\_\_\_\_ Storage \_\_\_\_\_  
Disposal \_\_\_\_\_ (Kind)

Company Jim Emes Petroleum Co., Inc.  
Address 619 Laconia Bldg., Wheeling, WV  
Farm R. Henderson Acres 41  
Location (waters) Pine Run  
Well No. 1 Elev. 973  
District Lincoln County Tyler  
The surface of tract is owned in fee by R. Henderson  
Address Sistersville  
Mineral rights are owned by Henderson Heirs  
Address \_\_\_\_\_  
Drilling Commenced 6/25/81  
Drilling Completed 7/1/81  
Initial open flow 298,000 cu. ft. 0 bbls.  
Final production \_\_\_\_\_ cu. ft. per day \_\_\_\_\_ bbls.  
Well open 4 hrs. before test 1025 RP.  
Well treatment details:

Casing and Tubing	Used in Drilling	Left in Well	Cement fill up Cu. ft. (Sks.)
Size			
20-16			
Cond.			
13-10"			
9 5/8			
8 5/8	261	261	
7			
5 1/2			
4 1/2		3005	
3			
2			
Liners Used			

Attach copy of cementing record.

8-5/8 100 SK Cement 298 MCF  
4-1/2 350 SK Cement

Foam frac ST Stage - 500 gal. acid - 300 bbl water  
60,000# 20/40 Sand - 450,000 C.F. Nitrogen  
2st Stage - 500 gal. acid - 250 Bbls water - 40,000# 20/40 Sand, 350,000 C.F. Nitrogen

Coal was encountered at \_\_\_\_\_ Feet \_\_\_\_\_ Inches  
Fresh water \_\_\_\_\_ Feet \_\_\_\_\_ Salt Water \_\_\_\_\_ Feet \_\_\_\_\_  
Producing Sand Berea and Fifth Depth 2793-2798 : 2816-2819  
2222-2229 / 2793-2819 2222-2231 2294-2299

Formation	Color	Hard or Soft	Top Feet	Bottom Feet	Oil, Gas or Water	* Remarks
Red-Rock			0	40		
Slate			40	200		
Red Rock			200	246		
Slate			246	734		
Red Rock			734	1160		
Sandy Slate			1160	1940		
Sand			1940	2218		
Berea			2218	2306		
Shale			2306	2408		
Gentz			2408	2414		
Shale			2414	2785		
Fifth			2785	2825		
Shale			2825	3005 T.D.		

SEP 16 1981  
OIL AND GAS DIVISION  
WHEELING, WV

OCT 08 1981

OCT 08 1981

\* Indicates Electric Log tops in the remarks section.