

39° 27' 30"

Latitude

80° 37' 30"

Longitude

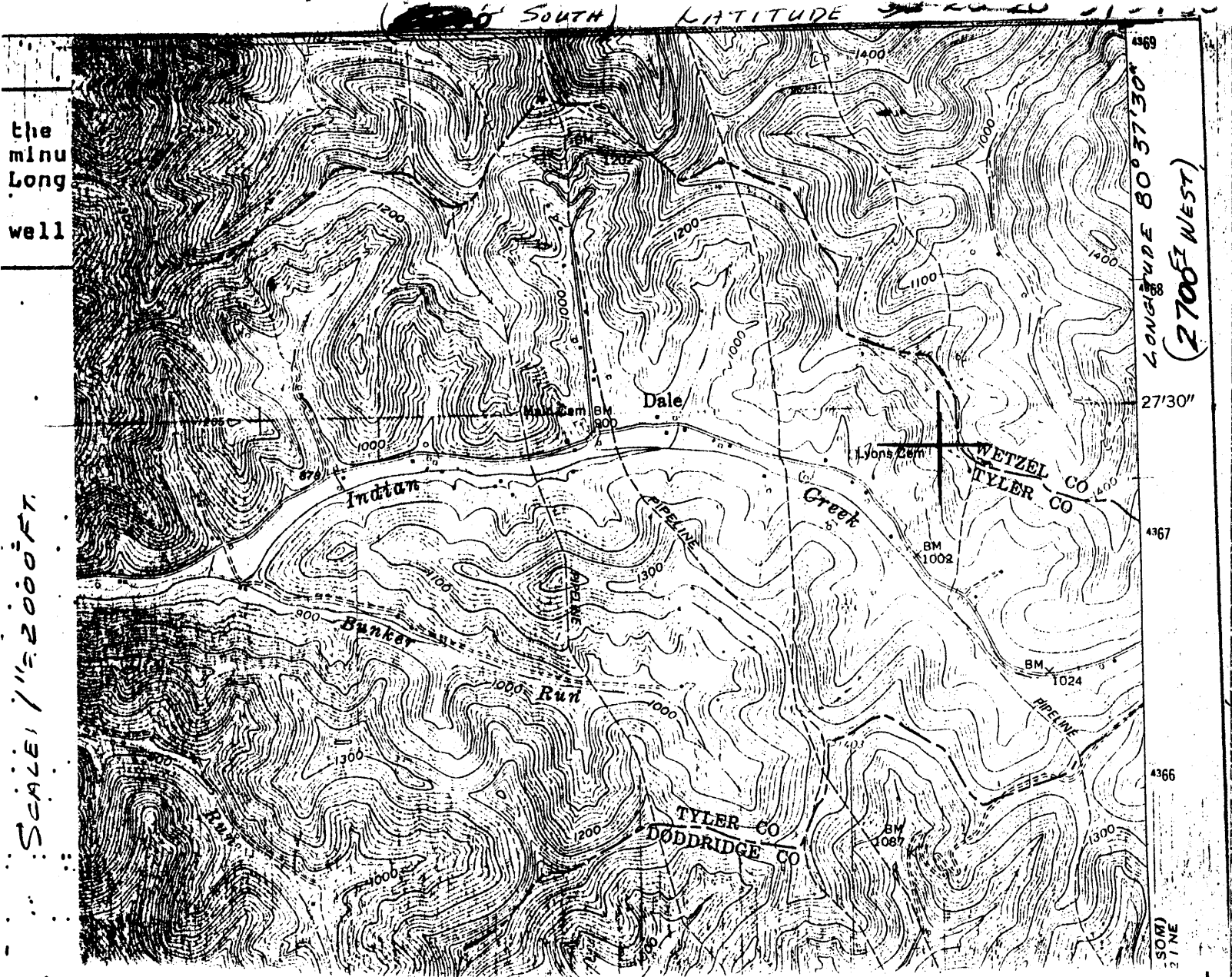
Topo Location

7.5' Loc. 0.105 15' Loc. 2.985
0.50W (calc.) 2.73W

Company Geo. P Kerns Corp #1
Farm Geo. P Kerns Corp (Simon Lyons #1)
15' Quad Center Point (NC)
(sec.)
7.5' Quad Center Point
District Mc Elroy

WELL LOCATION PLAT

County 095 Permit 1597N



I, the undersigned, hereby certify that this plat is correct to the best of my knowledge and belief.

SIGNED P. Leon Kerns
 TITLE PRES., Geo. R. Kerns Corp.

DATE MAY 10, 1923
 OPERATORS WELL NO. SIMON LYONS 1
 API WELL NO. 095-1597-N

STATE OF WEST VIRGINIA
 DEPARTMENT OF ENERGY
 OIL AND GAS DIVISION

DRILLED IN 1923

WELL TYPE: OIL GAS LIQUID INJECTION WASTE DISPOSAL
 TYPE "GAS" PRODUCTION STORAGE DEEP SHALLOW

LOCATION: ELEVATION _____ WATER SHED Indian Creek
 DISTRICT McElroy COUNTY TYLER
 QUADRANGLE CENTERPOINT
 Drilled As: SIMON LYONS HRS.

SURFACE OWNER Geo. R. Kerns Corp. (Current) ACREAGE 35

OIL & GAS ROYALTY OWNER Sylvia Lyons Hrs. Walter Sterling Hrs. LEASE ACREAGE 35
 LEASE NO. Nellie B. Hamrick

PRODUCING FORMATION Big Injun Sand TOTAL DEPTH 2505'

WELL OPERATOR Geo. R. Kerns Corp. DESIGNATED AGENT Wayne G. Kerns

ADDRESS 325 So. Third Avenue ADDRESS SAME
Paden City, WV 26159

MAY 22 1924

17241

the
minu
Long
well

SCALE 1" = 2000 FT.

LONGITUDE 80° 37' 30" (2700' WEST)

27'30"

4367

4366

(SOME)
31 NE

0694

Permitting
Office of Oil & Gas

State of West Virginia
Division of Environmental Protection
Section of Oil and Gas

Well Operator's Report of Well Work

Farm name: KERNS, GEORGE R. CORP. Operator Well No.: SIMON LYONS 1

LOCATION: Elevation: Quadrangle: CENTER POINT

District: MCELROY County: TYLER
Latitude: 5600 Feet South of 39 Deg. 28Min. 20 Sec.
Longitude 2700 Feet West of 80 Deg. 37 Min. 30 Sec.

Company: KERNS, GEORGE R. CORPORAT
325 SO. THIRD AVENUE
PADEN CITY, WV 00002-6159

Agent: WAYNE G. KERNS

Inspector: MIKE UNDERWOOD
Permit Issued: 03/17/94
Well work Commenced: 01/17/23
Well work Completed: 03/24/23
Verbal Plugging
Permission granted on:
Rotary Cable Rig
Total Depth (feet) 2505
Fresh water depths (ft) N.G.

Salt water depths (ft) N.G.
2504

Is coal being mined in area (Y/N)? N
Coal Depths (ft): 1115'

Casing & Tubing Size	Used in Drilling	Left in Well	Cement Fill Up Cu. Ft.
10"	265'	265'	NC
8"	1615'	1615'	NC
6"	2360'	2360'	NC
2"	—	2500'	—

OPEN FLOW DATA

Producing formation BIG INJUN Pay zone depth (ft) 2500
Gas: Initial open flow N.G. MCF/d Oil: Initial open flow 50 Bbl/d
Final open flow _____ MCF/d Final open flow _____ Bbl/d
Time of open flow between initial and final tests _____ Hours
Static rock Pressure N.G. psig (surface pressure) after _____ Hours

Second producing formation _____ Pay zone depth (ft) _____
Gas: Initial open flow _____ MCF/d Oil: Initial open flow _____ Bbl/d
Final open flow _____ MCF/d Final open flow _____ Bbl/d
Time of open flow between initial and final tests _____ Hours
Static rock Pressure _____ psig (surface pressure) after _____ Hours

NOTE: ON BACK OF THIS FORM PUT THE FOLLOWING: 1). DETAILS OF PERFORATED INTERVALS, FRACTURING OR STIMULATING, PHYSICAL CHANGE, ETC. 2). THE WELL LOG WHICH IS A SYSTEMATIC DETAILED GEOLOGICAL RECORD OF ALL FORMATIONS, INCLUDING COAL ENCOUNTERED BY THE WELLBORE.

For: KERNS, GEORGE R. CORPORATION

By: P. Leon Kernz, PRES.
Date: 04/16/94 JUN 11 1994

STATE OF WEST VIRGINIA
DIVISION OF ENVIRONMENTAL PROTECTION
SECTION OF OIL AND GAS

WELL REGISTER ASSIGNMENT

This API Number 47- 95-01597, issued to KERNS, GEORGE R. CORPORATION is evidence of permission to operate the well that is referenced at the location described on the attached plat, subject to the provisions of Chapters 22 and 22B of the West Virginia Code of 1931, as amended, and all rules and regulations promulgated thereunder. The name and telephone number of the Oil and Gas Inspector for this well is MIKE UNDERWOOD -
304-782-1043.

Spills or emergency discharges must be reported to 1-800-654-3312.

Failure to abide by all statutory and regulatory provisions governing all duties and operations hereunder may result in suspension or revocation of your permits and in addition may result in civil and/or criminal penalties.

The enclosed WR-35 must be completed by you and returned to this office. In addition annual production reports must be submitted on this well and failure to do so may require you to plug the well.

Theodore M. Streit
Chief

By: 

Title: _____

Operator's Well No: SIMON LYONS 1

Farm Name: KERNS, GEORGE R. CORP.

API Well Number : 47- 95-01597 N

Date Issued : 03/17/94