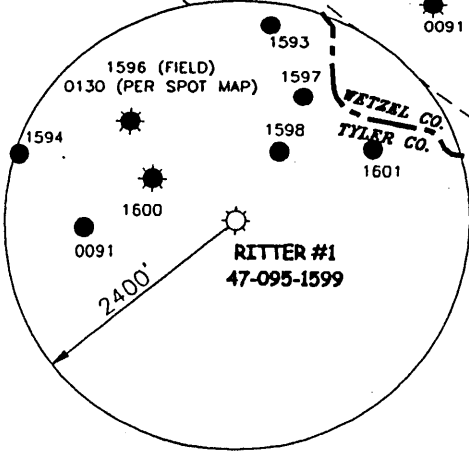
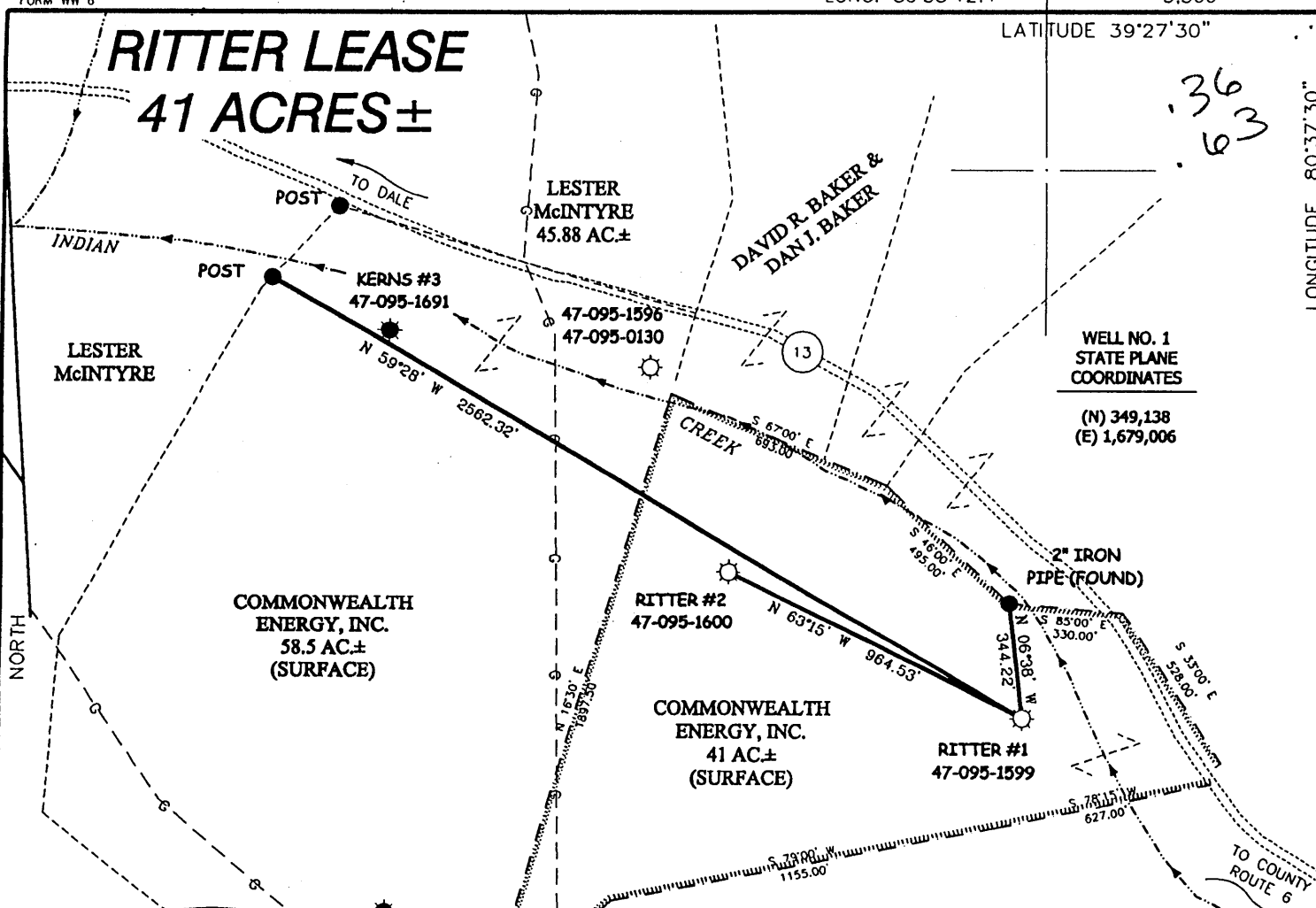


# RITTER LEASE 41 ACRES±

36  
63



## WELL NO. 1 47-095-1599

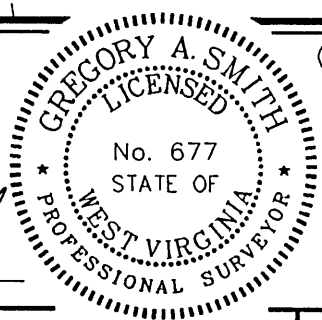
### NOTES ON SURVEY

1. TIES TO WELLS AND CORNERS ARE BASED ON STATE PLANE GRID NORTH WV NORTH ZONE NAD '27.
2. LEASE BOUNDARY SHOWN HEREON TAKEN FROM A PLAT PREPARED BY J.S. HAUGHT FOR RITTER #1 AND TITLE INFORMATION PROVIDED BY COMMONWEALTH ENERGY, INC.
3. SURFACE OWNER AND ADJOINER INFORMATION TAKEN FROM THE ASSESSOR AND COUNTY CLERK RECORDS OF TYLER COUNTY IN JUNE, 2000.
4. WELL LAT./LONG. ESTABLISHED BY DGPS(SUBMETER MAPPING GRADE).
5. SUBJECT WELL WAS DRILLED AROUND FEBRUARY/MARCH 1923 BY GEORGE R. KERNS & IS NOW PROPOSED TO BE DRILLED DEEPER.



I THE UNDERSIGNED, HEREBY CERTIFY THAT THIS PLAT IS CORRECT TO THE BEST OF MY KNOWLEDGE AND BELIEF AND SHOWS ALL THE INFORMATION REQUIRED BY LAW AND THE REGULATIONS ISSUED AND PRESCRIBED BY THE DEPARTMENT OF ENERGY.

P.S. 677  
*Gregory A. Smith*




(+) DENOTES LOCATION OF WELL ON UNITED STATES TOPOGRAPHIC MAPS.

DATE JUNE 21, 20 00  
 OPERATORS WELL NO. RITTER #1  
 API WELL NO. 47 - 095 - 1599-D  
 STATE COUNTY PERMIT  
was 095 30019, 100

MINIMUM DEGREE OF ACCURACY 1 / 200 FILE NO. 4421P1 (93-2)  
 PROVEN SOURCE OF ELEVATION BENCH MARK ELEVATION 1002' SCALE 1" = 500'

STATE OF WEST VIRGINIA  
 DIVISION OF ENVIRONMENTAL PROTECTION  
 OFFICE OF OIL AND GAS



WELL TYPE : OIL  GAS  LIQUID INJECTION  WASTE DISPOSAL  IF "GAS" PRODUCTION  STORAGE  DEEP  SHALLOW

LOCATION :  
 ELEVATION 958' WATERSHED INDIAN CREEK  
 DISTRICT McELORY COUNTY TYLER QUADRANGLE CENTER POINT 7.5'

SURFACE OWNER COMMONWEALTH ENERGY, INC. ACREAGE 41  
 ROYALTY OWNER COMMONWEALTH ENERGY, INC. LEASE ACREAGE 41  
 PROPOSED WORK : LEASE NO. \_\_\_\_\_

DRILL  CONVERT  DRILL DEEPER  REDRILL  FRACTURE OR STIMULATE  PLUG OFF OLD FORMATION  PERFORATE NEW FORMATION  PLUG AND ABANDON  CLEAN OUT AND REPLUG  OTHER

PHYSICAL CHANGE IN WELL (SPECIFY) FRAC BIG LIME @ 2058' TARGET FORMATION GORDON  
 ESTIMATED DEPTH 3000'

WELL OPERATOR COMMONWEALTH ENERGY, INC. DESIGNATED AGENT ENZO CARDELLI  
 ADDRESS P.O. BOX 432 MT. MORRIS, PA 15349 ADDRESS RT. 4 BOX 771 BUCKHANNON, WV 26201

COUNTY NAME TYL  
 PERMIT 1599 D

(Jacksonburg - Strongtown 95) 6-6 JUN 30 2000

State of West Virginia  
Department of Environmental Protection  
Office of Oil and Gas

Well Operator's Report of Well Work

Farm name: V. Ritter Operator Well No.: 1

LOCATION: Elevation: 942' Quadrangle: Center Point 7.5

District: McElroy County: Tyler  
Latitude: 1880 Feet South of 39 Deg. 27 Min. 10 Sec. 9  
Longitude 3300 Feet West of 80 Deg. 38 Min. 12 Sec. 4

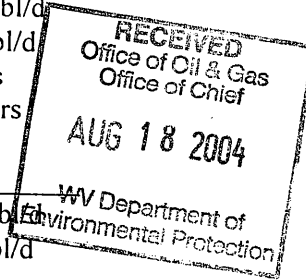
Company: Commonwealth Energy, Inc.

|  | Casing & Tubing | Used in drilling | Left in well | Cement fill up Cu. Ft. |
|--|-----------------|------------------|--------------|------------------------|
| Address: P. O. Box 432                               |                 |                  |              |                        |
| Mount Morris, PA 15349                               | 7"              | 2055             | 2055         | To surface             |
| Agent: Enzo Cardelli                                 |                 |                  |              |                        |
| Inspector: Mike Underwood                            | 3 1/2           | 2138             | 2138         | 100 sacks              |
| Date Permit Issued: 6/21/00                          |                 |                  |              | 500' fillup            |
| Date Well Work Commenced: 6/30/00                    |                 |                  |              |                        |
| Date Well Work Completed: 7/02/00                    |                 |                  |              |                        |
| Verbal Plugging: No                                  |                 |                  |              |                        |
| Date Permission granted on:                          |                 |                  |              |                        |
| Rotary <input checked="" type="checkbox"/> Cable Rig |                 |                  |              |                        |
| Total Depth (feet): 2158'                            |                 |                  |              |                        |
| Fresh Water Depth (ft.): 110'                        |                 |                  |              |                        |
| Salt Water Depth (ft.): N/A                          |                 |                  |              |                        |
| Is coal being mined in area (N/Y)? N                 |                 |                  |              |                        |
| Coal Depths (ft.): N/A                               |                 |                  |              |                        |

OPEN FLOW DATA

Producing formation Big Injun Pay zone depth (ft) 2048  
Gas: Initial open flow 250 MCF/d Oil: Initial open flow 0 Bbl/d  
Final open flow 200 MCF/d Final open flow 0 Bbl/d  
Time of open flow between initial and final tests 6 Hours  
Static rock Pressure 450 psig (surface pressure) after 6 Hours

Second producing formation N/A Pay zone depth (ft) \_\_\_\_\_  
Gas: Initial open flow \_\_\_\_\_ MCF/d Oil: Initial open flow \_\_\_\_\_ Bbl/d  
Final open flow \_\_\_\_\_ MCF/d Final open flow \_\_\_\_\_ Bbl/d  
Time of open flow between initial and final tests \_\_\_\_\_ Hours  
Static rock Pressure \_\_\_\_\_ psig (surface pressure) after \_\_\_\_\_ Hours



NOTE: ON BACK OF THIS FORM PUT THE FOLLOWING: 1). DETAILS OF PERFORATED INTERVALS, FRACTURING OR STIMULATING, PHYSICAL CHANGE, ETC. 2). THE WELL LOG WHICH IS A SYSTEMATIC DETAILED GEOLOGICAL RECORD OF ALL FORMATIONS, INCLUDING COAL ENCOUNTERED BY THE WELLBORE.

Signed: Carl F. Carbonara  
By: Carl F. Carbonara, President  
Date: \_\_\_\_\_

DEC 30 2004

TYL 1599 D

V. Ritter #1  
47-095-01599-D

8/1/2000

Alleghey Wireline Services perforated Big Injun formation (~~2970'~~ <sup>2070'</sup> ~~2976'~~ <sup>2076'</sup>) 18 holes.  
Haliburton Energy Services pumped 700 gal. 15% acid breakdown Press: 2570#, Avg rate  
10 Bbl/min., Avg. psi 2200#, pumped 26000# 20/40 sand, 290 SCF n2, ISIP 2835 psi.

Drillers Log

| <u>Formation</u> | <u>Top</u> | <u>Bottom</u> |
|------------------|------------|---------------|
| Clay             | 0          | 10            |
| Sd/Sh            | 10         | 143           |
| Sd               | 143        | 314           |
| RR               | 314        | 330           |
| Sd/Sh            | 330        | 439           |
| Coal             | 439        | 453           |
| Sd/Sh            | 453        | 690           |
| Lime             | 690        | 705           |
| Sd/Sh            | 705        | 921           |
| RR               | 921        | 1117          |
| Sd/Sh            | 1117       | 1854          |
| 854              | 1854       | 1877          |
| Sd/Sh            | 1877       | 1904          |
| Lime             | 1904       | 1908          |
| Sh               | 1908       | 1971          |
| BL               | 1971       | 2063          |
| Sd               | 2063       | 2158          |
| TD               | 2158       |               |

Electric Log Tops

| <u>Formation</u> | <u>Depth top</u> |
|------------------|------------------|
| Big Lime         | 1992             |
| Big Injun        | 2048             |
| Berea            | 2573             |
| Gordon           | 2720             |
| Benson           | 5012             |

?

RECEIVED  
DEPARTMENT OF ENVIRONMENTAL PROTECTION  
MAY 06 94  
Permitting  
Office of Oil & Gas

State of West Virginia  
Division of Environmental Protection  
Section of Oil and Gas

Well Operator's Report of Well Work

Farm name: KERNs, GEORGE R. CORP. Operator Well No.: V. RITTER 1

LOCATION: Elevation: Quadrangle: CENTER POINT

District: MCELROY County: TYLER  
Latitude: 7000 Feet South of 39 Deg. 28 Min. 20 Sec.  
Longitude: 3400 Feet West of 80 Deg. 37 Min. 30 Sec.

Company: KERNs, GEORGE R. CORPORAT  
325 SO. THIRD AVENUE  
PADEN CITY, WV 00002-6159

Agent: WAYNE G. KERNs

Inspector: MIKE UNDERWOOD  
Permit Issued: 03/17/94  
Well work Commenced: 01/23/23  
Well work Completed: 02/24/23  
Verbal Plugging  
Permission granted on: \_\_\_\_\_  
Rotary Cable  Rig  
Total Depth (feet) 2155  
Fresh water depths (ft) \_\_\_\_\_

Salt water depths (ft) 1617  
2150  
Is coal being mined in area (Y/N)? N  
Coal Depths (ft): 207, 691, 713

| Casing & Tubing Size | Used in Drilling | Left in Well | Cement Fill Up Cu. Ft. |
|----------------------|------------------|--------------|------------------------|
| 8 1/4"               | 1249'            | 1249'        | NC                     |
| 6"                   | 2058'            | 2058'        | NC                     |
| 2"                   | -                | 2145'        | -                      |
|                      |                  |              |                        |
|                      |                  |              |                        |

OPEN FLOW DATA

Producing formation Big Injun Pay zone depth (ft) 2132  
Gas: Initial open flow 990 MCF/d Oil: Initial open flow 2 Bbl/d  
Final open flow \_\_\_\_\_ MCF/d Final open flow 7 Bbl/d  
Time of open flow between initial and final tests \_\_\_\_\_ Hours  
Static rock Pressure NG psig (surface pressure) after \_\_\_\_\_ Hours

Second producing formation \_\_\_\_\_ Pay zone depth (ft) \_\_\_\_\_  
Gas: Initial open flow \_\_\_\_\_ MCF/d Oil: Initial open flow \_\_\_\_\_ Bbl/d  
Final open flow \_\_\_\_\_ MCF/d Final open flow \_\_\_\_\_ Bbl/d  
Time of open flow between initial and final tests \_\_\_\_\_ Hours  
Static rock Pressure \_\_\_\_\_ psig (surface pressure) after \_\_\_\_\_ Hours

NOTE: ON BACK OF THIS FORM PUT THE FOLLOWING: 1). DETAILS OF PERFORATED INTERVALS, FRACTURING OR STIMULATING, PHYSICAL CHANGE, ETC. 2). THE WELL LOG WHICH IS A SYSTEMATIC DETAILED GEOLOGICAL RECORD OF ALL FORMATIONS, INCLUDING COAL ENCOUNTERED BY THE WELLBORE.

For: KERNs, GEORGE R. CORPORATION

By: P. Leon Kerns, PRES.  
Date: 04/16/94

Vietta Ritter # 1

H.N.G.Co.

Commenced: Jan. 23, 1923

Completed: Feb. 24, 1923

Elevation: 974'

20015-1000  
3-112

LOG

Native Coal -----207-212  
 Coal Seam -----691-694  
 PGH. Coal -----713-718  
 Little Dunkard -----1087-1155 ← 8 1/4" @ 1249'  
 2nd. Salt Sand -----1572-1677 water: 1617  
 Maxon Sand -----1907-1917'  
 Little Lime -----1976-1981  
 Pencil Cave -----1991-1997  
 Big Lime -----1997-2070 ← Δ 6" @ 2058  
 Big Injun -----2070  
     Show of Gas:-----2075-2076  
     Gas Pay:-----2122-2132-2137  
     Tested: 990 thous./day.  
     5/10 thru 6 5/8" casing (water)  
     Rock Pressure: 675# in 24 hours.  
     Oil: -----2137  
 Total Depth -----2139 (ORIGINAL IN 1923)  
 Drilled Deeper: Dec. 15, 1938--Dec. 23, 1938  
 Big Injun -----2139-2155 water: 2153  
     Oil Pay: -----2148-2150  
     Gas Pay: -----2148-2150  
 Final Total Depth -----2155

Shooting

Sept. 15, 1923: 10qts. Top: 2134 Bottom: 2139

Shot after drilled to 2139 level

Casing

8 1/4"----1249

6 5/8"----2058

Remarks

1923: Shot helped gas to 60/10 in 2" -- 2bbls.oil/day.  
 After drilled deeper in 1938, well was tested at,  
 7bbls.oil & 18bbls.water/day.  
 Gas tested at 23/10 thru 3/8" → 4900 #. F&P  
 Initial Prod. 1938: 35bbls./wk. No Shot.  
 Prod. 1939: 24bbls./wk.

2137 ORIGINAL  
 2070 IN 1923  
 67