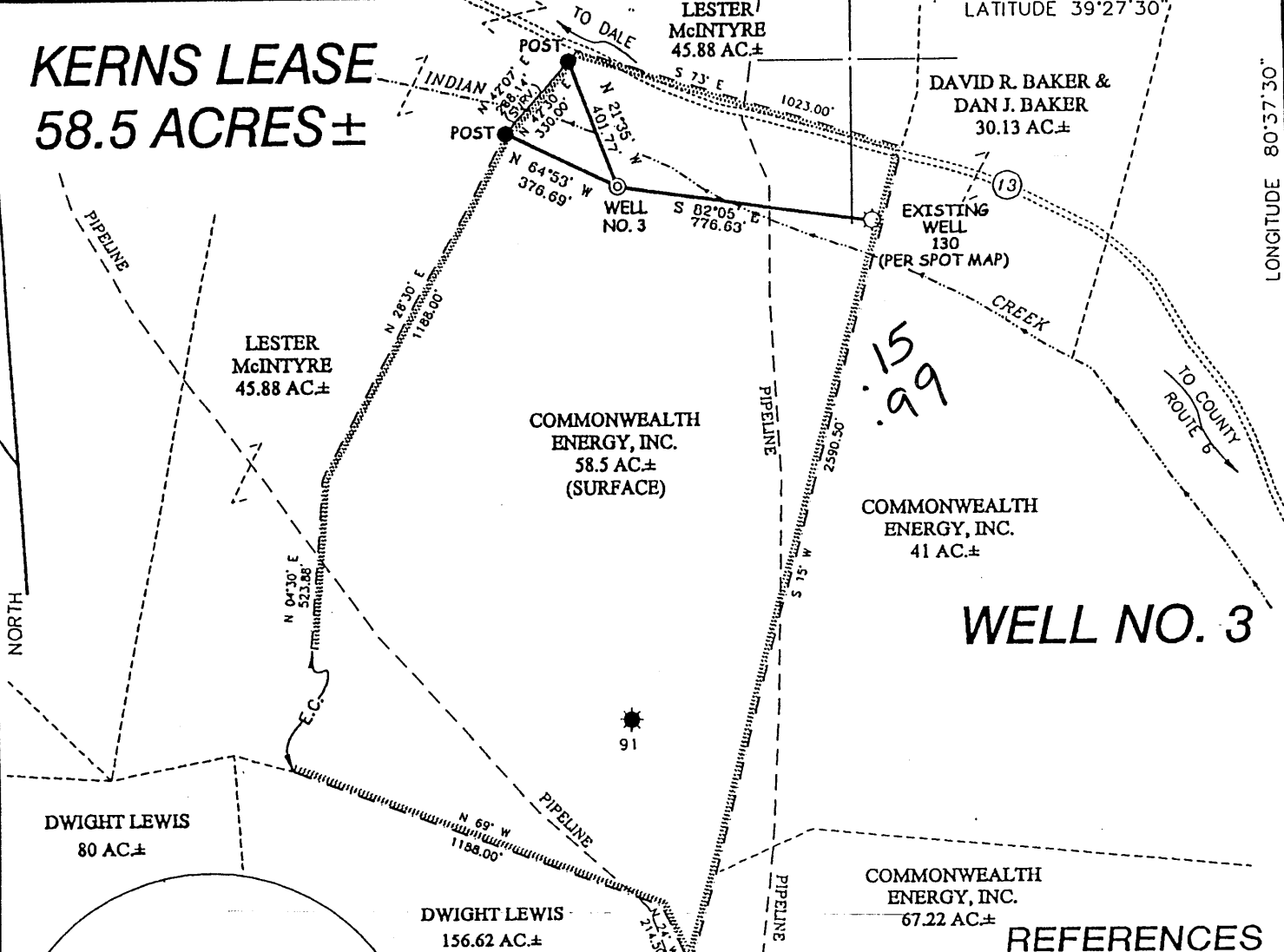


KERNS LEASE 58.5 ACRES±



WELL NO. 3

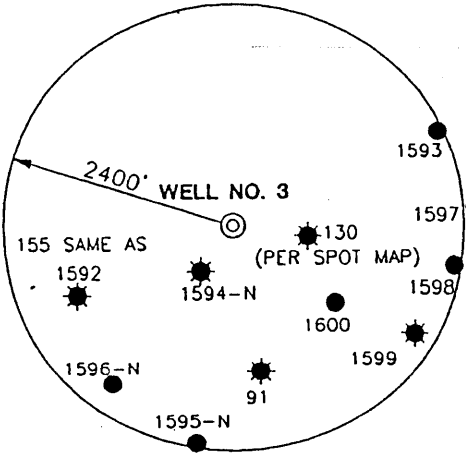
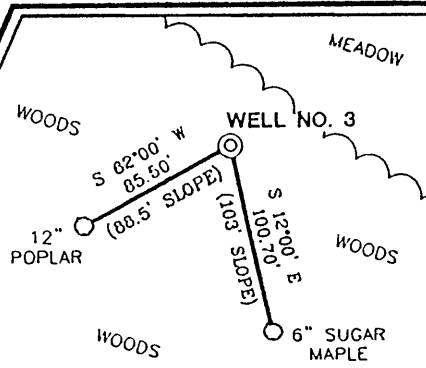
DWIGHT LEWIS
156.62 AC±

COMMONWEALTH ENERGY, INC.
67.22 AC±

NOTES ON SURVEY

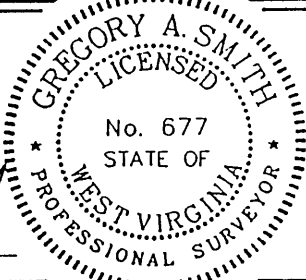
1. TIES TO WELLS AND CORNERS ARE BASED ON STATE PLANE GRID NORTH WV NORTH ZONE NAD '27.
2. TIES TO REFERENCES ARE BASED ON MAGNETIC NORTH 12/22/99.
3. LEASE BOUNDARY SHOWN HEREON TAKEN FROM A PLAT DATED 2/22/38 AS PREPARED BY J.S. HAUGHT, ENGINEER FOR A.P.I. NO. 47-095-0091.
4. SURFACE OWNER AND ADJOINER INFORMATION TAKEN FROM THE ASSESSOR AND COUNTY CLERK RECORDS OF TYLER COUNTY IN DECEMBER, 1999.
5. WELL LAT./LONG. ESTABLISHED BY DGPS (SUBMETER MAPPING GRADE).

REFERENCES



I THE UNDERSIGNED, HEREBY CERTIFY THAT THIS PLAT IS CORRECT TO THE BEST OF MY KNOWLEDGE AND BELIEF AND SHOWS ALL THE INFORMATION REQUIRED BY LAW AND THE REGULATIONS ISSUED AND PRESCRIBED BY THE DEPARTMENT OF ENERGY.

P.S. 677 *Gregory A. Smith*



(+) DENOTES LOCATION OF WELL ON UNITED STATES TOPOGRAPHIC MAPS.
 DATE DECEMBER 28, 19 99
 OPERATORS WELL NO. KERNS NO. 3
 API WELL NO. 47-095-01691
 STATE COUNTY PERMIT

MINIMUM DEGREE OF ACCURACY 1 / 200 FILE NO. 4326P1 (77-39)
 PROVEN SOURCE OF ELEVATION JUNCTION OF ROADS ELEVATION 878' SCALE 1" = 800'

STATE OF WEST VIRGINIA
 DIVISION OF ENVIRONMENTAL PROTECTION
 OFFICE OF OIL AND GAS



WELL TYPE : OIL GAS LIQUID INJECTION WASTE DISPOSAL IF "GAS" PRODUCTION STORAGE DEEP SHALLOW

LOCATION :
 ELEVATION 942' WATERSHED INDIAN CREEK
 DISTRICT McELROY COUNTY TYLER QUADRANGLE CENTER POINT 7.5'

SURFACE OWNER COMMONWEALTH ENERGY, INC. ACREAGE 58.5
 ROYALTY OWNER COMMONWEALTH ENERGY, INC. LEASE ACREAGE 58.5
 PROPOSED WORK : LEASE NO. _____

DRILL CONVERT DRILL DEEPER REDRILL FRACTURE OR STIMULATE PLUG OFF OLD FORMATION PERFORATE NEW FORMATION PLUG AND ABANDON CLEAN OUT AND REPLUG OTHER _____

PHYSICAL CHANGE IN WELL (SPECIFY) _____ TARGET FORMATION ALEXANDER
 ESTIMATED DEPTH 5600'

WELL OPERATOR COMMONWEALTH ENERGY, INC. DESIGNATED AGENT ENZO CARDELLI
 ADDRESS P.O. BOX 432 MT. MORRIS, PA 15349 ADDRESS RT. 4 BOX 771 BUCKHANNON, WV 26201

Unrecorded 0) 6-6

LONGITUDE 80°37'30" LAT. 39°27'21.9" COUNTY NAME TYLER PERMIT 1691

State of West Virginia
Division of Environmental Protection
Section of Oil and Gas

Well Operator's Report of Well Work

Farm Name: Commonwealth Energy Operators Kerns #3
Location: Elevation: 942' Quadrangle: Centerpoint 7.5'
District: McElroy County: Tyler
Latitude: 780 Feet South of 39 Deg. 27 min. 30sec.
Longitude: 5190 Feet West of 80 Deg. 37 min. 50sec.

Company: Commonwealth Energy, Inc.

P. O. 432 casing used in left cement
Mt. Morris PA 15349 tubing drilling in well fill up sks

Agent: Enzo Cardelli

Inspector: Mike Underwood
Permit Issued: 01/15/00
Well Work Commenced: 01/17/00
Well Work Completed: 01/24/00
Rotary X Cable _____ Rig
Total Depth (feet) 5802'
Fresh Water Depths (ft) 220'
Salt Water Depths (ft) 2134'
Is coal being mined in area (Y/N) N
Coal Depths (ft): 439'

11 3/4 150 132 70
8 5/8 1550 1529 350
4 1/2 5802 5250 630

OPEN FLOW DATA

Producing Formation Benson-Bradford Pay zone depth (ft) 4418-5072
Gas: Initial open flow tstm MCF/D Oil: Initial open flow 0 BBL/D
Final open flow 607 MCF/D Final open Flow 3 BBL/D
Static Rock Pressure 1600 psig (surface pressure) after 48 Hours

SEP 17 2004

Second producing formation Gordon Pay zone depth (ft) 2787-2808
Gas: Initial open flow * MCF/D Oil: Initial open flow 0 BBL/D
Final open flow * MCF/D Final open flow * BBL/D
static rock pressure * psig (surface pressure) after * Hours

* = commingled zones

For: Commonwealth Energy Inc.

By: Carl Carman

Date: 03-01-00

RECEIVED
Office of Oil & Gas
Office of Chief
AUG 13 2004
WV Department of
Environmental Protection

TYL 1691

Stage	Formation	Perfs	Sand	N2
02-02-00	Kerns #3			
1	Benson Bradford	4418-5072 18 holes	200 sks	186,000 scf
2	Gordon	3104-3112 16 holes	322 sks	253,000 scf

ISIP = 2450#
5 min = 2279#

Drillers Log

Formation	Top	Bottom
Clay	0	10
Sd/Sh	10	143
Sd	143	314
RR	314	330
Sd/Sh	330	439
Coal	439	453
Sd/Sh	453	690
Lime	690	705
Sd/Sh	705	921
RR	921	1117
Sd/Sh	1117	1854
Sd	1854	1877
Sd/Sh	1877	1904
Lime	1904	1908
Sh	1908	1971
BL	1971	2063
Sd	2063	2207
Sh	2207	2778
Sd	2778	2809
Sd/Sh	2809	5142
Sd	5142	5149
Sd/Sh	5149	5802
TD	5802	

Electric Log Tops

Formation	Depth top
Big Lime	1992
Big Injun	2048
Berea	2573
Gordon	2720
Benson	5012

SEP 17 2004

1" strm salt water @ 2134
gas ck @ 2072 = 20/10 in 1/2" w/w
gas ck @ 2257 = 10/10 in 1/2" w/w
gas ck @ 2841 = 12/10 in 1/2" w/w
gas ck @ 5435 = 20/10 in 1/2" w/w