

# S.C. HANES LEASE

## 64 ACRES±

NORTH  
TRIBUTARY OF MARSH RUN

KARL K. HICKMAN  
114.19 ACRES±  
(SURFACE)

W.H.V. & MAMIE K. JONES  
96.46 ACRES±  
(SURFACE)

RICHARD C. & GAIL A. FOLEY et al  
113 ACRES±  
(SURFACE)

RITCHIE CO.  
TYLER CO.

EDWARD & DAVID GARNER & SUE WILKINSON  
62.5 ACRES±  
(SURFACE)

### NOTES ON SURVEY

1. TIES TO WELLS AND CORNERS ARE BASED ON STATE PLANE GRID NORTH WV NORTH ZONE NAD '27.
2. TIES TO REFERENCES ARE BASED ON MAGNETIC NORTH 04/25/01.
3. LEASE BOUNDARY SHOWN HEREON TAKEN FROM DEED BOOK 305 ON PAGE 217 IN THE COUNTY CLERK RECORDS OF TYLER COUNTY.
4. SURFACE OWNER AND ADJOINER INFORMATION TAKEN FROM THE ASSESSOR AND COUNTY CLERK RECORDS OF TYLER COUNTY IN APRIL, 2001.
5. WELL LAT./LONG. ESTABLISHED BY DGPS(SUBMETER MAPPING GRADE).

## HANES NO. 1

47-085-7430

S 86°59' W  
(BROKEN TIE)

2387.51'

RITCHIE CO.  
TYLER CO.

STONE (FOUND)

HANES NO. 1

S 70°25' W  
547.87'  
N 73° W  
586.44'  
N 73° W  
587.14' (SURV.)

CHESTNUT OAK STUMP (FOUND)

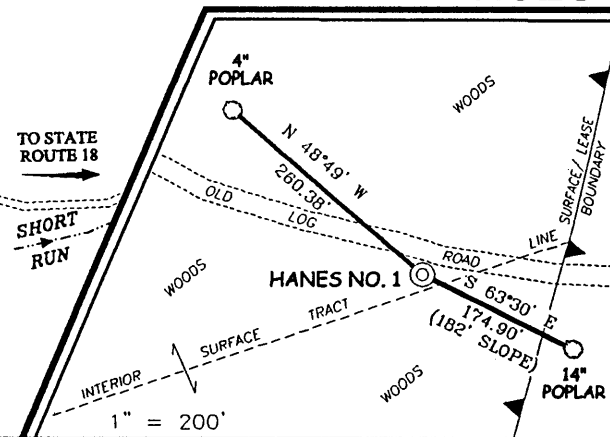
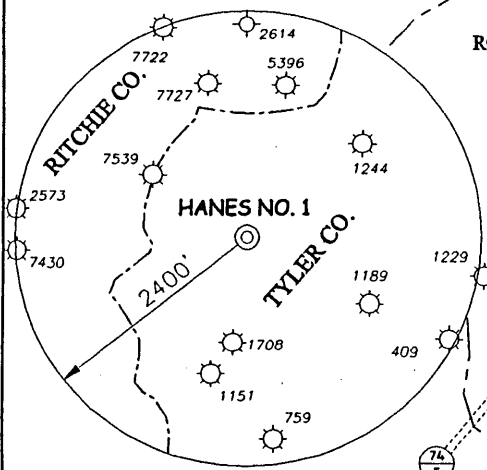
EDWARD GARNER  
84.42 ACRES±  
(SURFACE)

TRIBUTARY OF SHORT RUN

TRIBUTARY OF SHORT RUN

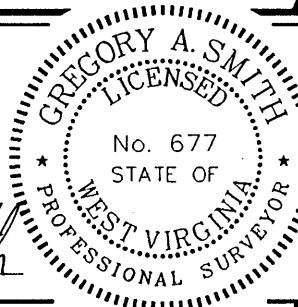
RONALD M. & BARBARA BRADLEY  
31 ACRES±  
(SURFACE)

### REFERENCES



I THE UNDERSIGNED, HEREBY CERTIFY THAT THIS PLAT IS CORRECT TO THE BEST OF MY KNOWLEDGE AND BELIEF AND SHOWS ALL THE INFORMATION REQUIRED BY LAW AND THE REGULATIONS ISSUED AND PRESCRIBED BY THE DEPARTMENT OF ENERGY.

P.S. 677 *Gregory A. Smith*



(+) DENOTES LOCATION OF WELL ON UNITED STATES TOPOGRAPHIC MAPS.  
 DATE MAY 2, 2001  
 OPERATORS WELL NO. HANES NO. 1  
 API WELL NO. 47-095-01710  
 STATE COUNTY PERMIT

MINIMUM DEGREE OF ACCURACY 1 / 200 FILE NO. 4730P1 (104-18)  
 PROVEN SOURCE OF ELEVATION TOP OF KNOB ELEVATION 1368' SCALE 1" = 500'

STATE OF WEST VIRGINIA  
 DIVISION OF ENVIRONMENTAL PROTECTION  
 OFFICE OF OIL AND GAS



WELL TYPE : OIL  GAS  LIQUID INJECTION  WASTE DISPOSAL  IF "GAS" PRODUCTION  STORAGE  DEEP  SHALLOW   
 LOCATION : ELEVATION 1129' WATERSHED TRIBUTARY OF SHORT RUN  
 DISTRICT CENTERVILLE COUNTY TYLER QUADRANGLE PENNSBORO 7.5'  
 SURFACE OWNER EDWARD GARNER et al ACREAGE 62.5±  
 ROYALTY OWNER EDWARD GARNER et al LEASE ACREAGE 64±  
 PROPOSED WORK : LEASE NO. \_\_\_\_\_  
 DRILL  CONVERT  DRILL DEEPER  REDRILL  FRACTURE OR STIMULATE  PLUG OFF OLD FORMATION  PERFORATE NEW FORMATION  PLUG AND ABANDON  CLEAN OUT AND REPLUG  OTHER \_\_\_\_\_  
 PHYSICAL CHANGE IN WELL (SPECIFY) \_\_\_\_\_ TARGET FORMATION ALEXANDER  
 ESTIMATED DEPTH 5600'

WELL OPERATOR KEY OIL COMPANY DESIGNATED AGENT JAN CHAPMAN  
 ADDRESS 22 GARTON PLAZA WESTON, WV 26452 ADDRESS 22 GARTON PLAZA WESTON, WV 26452

JUN 15 2001

6-6 90

COUNTY NAME TYLER  
PERMIT 1710

State of West Virginia  
Division of Environmental Protection  
Section of Oil and Gas

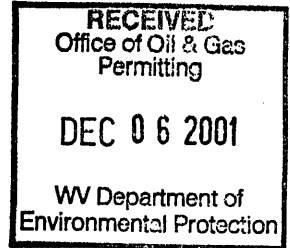
Reviewed \_\_\_\_\_

Well Operators Report of Well Work

Farm name: Garner Operator Well #: Hanes #1  
Location: Elevation: 1120' Quadrangle: Pennsboro 7.5'  
District: Centerville County Tyler  
Latitude 2,430 feet south of 39 Deg. 20 Min. 00 Sec.  
Longitude 3,550 feet west of 80 Deg. 52 Min. 30 Sec.

Company: Key Oil Company  
22 Garton Plaza  
Weston, WV 26452

Agent: Jan Chapman Casing Used in Drilling Left in Well Cement Fill up  
Inspector: Mike Underwood  
Permit Issued: 06-14-01 11 3/4 148 135 60 sks  
Well Work Commenced: 10-04-01 8 5/8 1790 1705 345 sks  
Well Work Completed: 10-06-01  
Verbal Plugging  
Permission granted on: 4 1/2 5384 5320 250 sks  
Rotary \_\_\_\_\_ Cable \_\_\_\_\_ Rig  
Total Depth (ft) 5384'  
Fresh water depth (ft) 79'  
Salt water depth (ft) N/A  
Is coal being mined in are (Y/N) N  
Coal depths (ft) N/A



OPEN FLOW DATA

Producing formation Alexander Pay zone depths (ft) 5186-5209  
Gas: Initial open flow 60 mcf/d Oil: Initial open flow bbls/day  
Final open flow 1524 mcf/d Final open flow bbls/day  
Time of open flow between initial and final tests 48 Hours  
Static rock pressure 800# psig (surface pressure) after 48 Hours

Other producing formation Benson/Riley Pay zone depths (ft) 4526-4922  
Gas: Initial open flow \* mcf/day Oil Initial open flow bbls/day  
Final open flow \* mcf/day Final open flow bbls/day  
Time of open flow between initial and final tests 48 Hours  
Static rock pressure psig (surface pressure) after 48 Hours  
\* = commingled zones

For: Key Oil Company

By: *Jan Chapman*  
Date: 11-01-01

DEC 07 2001

TYL 1710

API # 47-095-01710  
 Hanes #1

Stage #	perfs	sand	
Stage #1 Alexander	5186-5209	600 sks	60 quality foam
Stage #2 Benson	4920-4922	350 sks	60 quality foam
Stage #3 Riley	4526-4556	300 sks	60 quality foam

Drillers Log

Electric Log Tops

Sh	0	39	
Sd	39	88	water @ 79'
Sd/Sh	88	252	
Shale	252	715	
Sd/Sh	715	830	
RR	830	845	
Sd/Sh	845	1897	
L. Lime	1897	1926	gas ck @ 1918 = no show
B. Lime	1926	2011	
Big Injun	2011	2063	
Sd/Sh	2063	3370	gas ck @ 2230 = 60 mcfs
Warren	3370	3420	
Sd/Sh	3420	4120	gas ck @ 3011 = 60 mcfs
Balltown	4120	4250	
Sd/Sh	4250	4620	
Riley	4620	4660	
Sd/Sh	4660	4930	
Benson	4930	4940	
Sd/Sh	4940	5170	
Alexander	5170	5185	
Sd/Sh	5185	5320	
TD	5320		