

Longitude - 80° 41'50.5"

8,675'

LATITUDE 39° 27' 30"

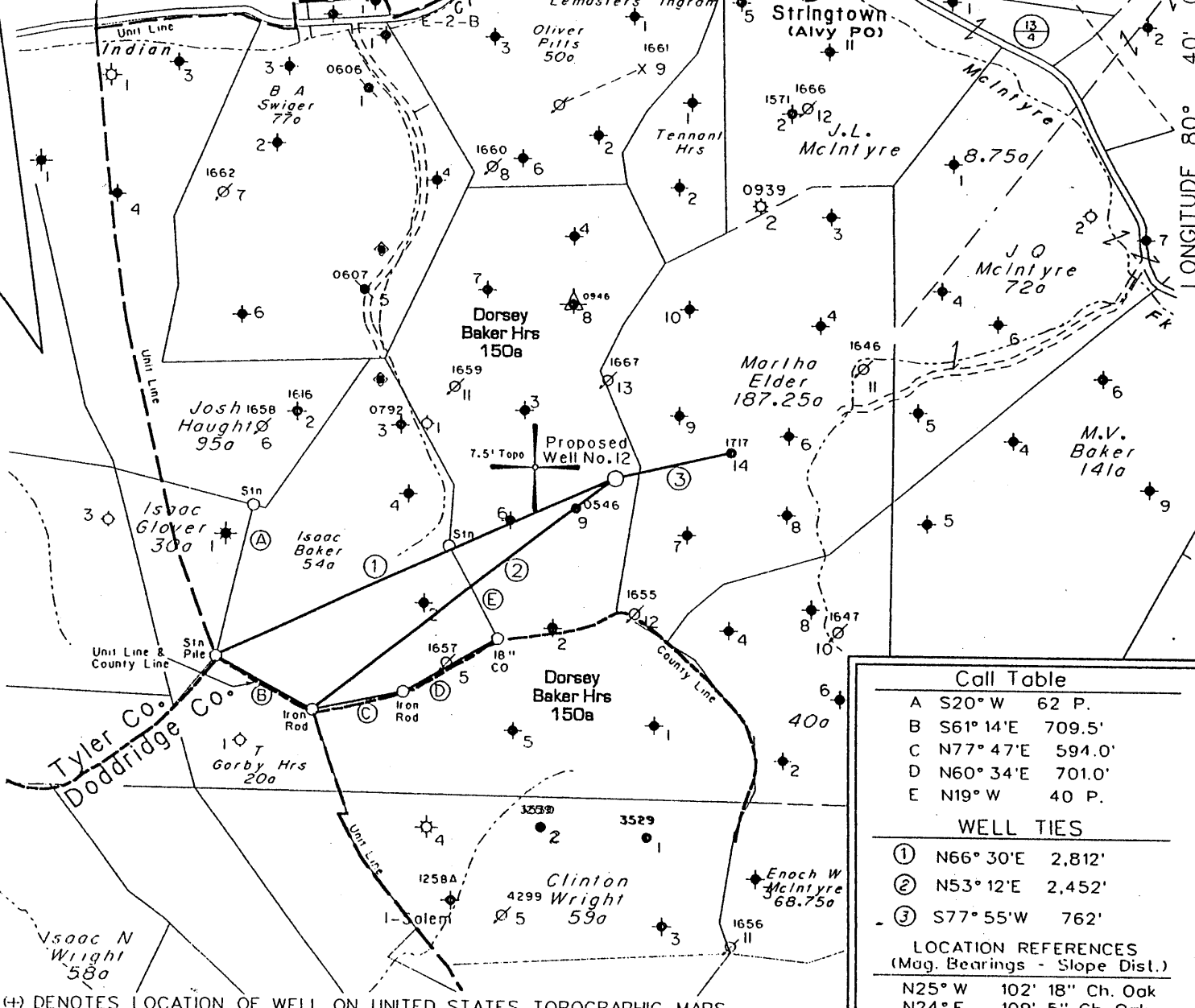
LONGITUDE 80° 40' 00"

8,575'

Latitude - 39° 26'05.1"

NOTES ON SURVEY

- 1 - Well ties and Latitude and Longitude were measured by DGPS (Sub-meter Mapping Grade). Bearings are referenced to State Plane Grid North (WV North Zone - NAD 1927).
- 2 - The Property Lines shown hereon are from field survey performed in 1996.
- 3 - Surface owner information obtained from the Tyler County Assessor's tax records.



Call Table

A	S20° W	62 P.
B	S61° 14'E	709.5'
C	N77° 47'E	594.0'
D	N60° 34'E	701.0'
E	N19° W	40 P.

WELL TIES

①	N66° 30'E	2,812'
②	N53° 12'E	2,452'
③	S77° 55'W	762'

LOCATION REFERENCES (Mag. Bearings - Slope Dist.)

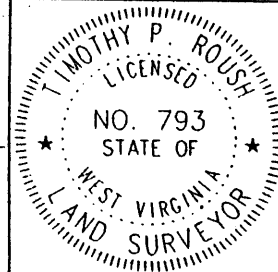
N25° W	102' 18"	Ch. Oak
N24° E	109' 5"	Ch. Oak

(H) DENOTES LOCATION OF WELL ON UNITED STATES TOPOGRAPHIC MAPS

FILE NO. 1038-26
 MAP NO. N47 N S 2 E W 5
 SCALE 1" = 1000'
 MINIMUM DEGREE OF ACCURACY 1 in 200
 PROVEN SOURCE OF ELEVATION DGPS Survey

I THE UNDERSIGNED, HEREBY CERTIFY THAT THIS PLAT IS CORRECT TO THE BEST OF MY KNOWLEDGE AND BELIEF AND SHOWS ALL THE INFORMATION REQUIRED BY LAW AND THE REGULATIONS ISSUED AND PRESCRIBED BY THE DEPARTMENT OF MINES.

(SIGNED) Timothy P. Roush
 TIMOTHY P. ROUSH PS 793



WEST VIRGINIA

Division of Environmental Protection
 Office of Oil and Gas
 1356 Hansford St.
 Charleston, West Virginia 25301



DATE June 11, 2003
 FARM Dorsey Baker Hrs. NO. 12
 API WELL NO. 47-095-01749LI

WELL TYPE: OIL GAS LIQUID INJECTION WASTE DISPOSAL
 (IF "GAS") PRODUCTION STORAGE DEEP SHALLOW
 LOCATION: ELEVATION 1,274' WATERSHED Indian Creek
 DISTRICT McElroy COUNTY Tyler
 QUADRANGLE Centerpoint 7.5'

SURFACE OWNER Dorsey Baker Hrs. et al. ACREAGE 139.81 Ac.
 OIL & GAS ROYALTY OWNER East Resources, Inc. et al. LEASE ACREAGE 150 Ac.
 LEASE NO. 13130-50

PROPOSED WORK: DRILL CONVERT DRILL DEEPER REDRILL FRACTURE OR STIMULATE PLUG OFF OLD FORMATION PERFORATE NEW FORMATION OTHER PHYSICAL CHANGE IN WELL (SPECIFY) _____

PLUG AND ABANDON CLEAN OUT AND REPLUG
 TARGET FORMATION Gordon ESTIMATED DEPTH 3,300'

WELL OPERATOR East Resources, Inc. DESIGNATED AGENT Michael McCown
 ADDRESS P. O. Box 5519 ADDRESS P. O. Box 5519
Vienna, W.Va. 26105 Vienna, W.Va. 26105

JUL 03 2003

State of West Virginia
Division of Environmental Protection
Section of Oil and Gas

Well Operator's Report of Well Work

MV

Farm name: DORSEY BAKER HRS. Operator Well No.: BAKER HRS 12

LOCATION: Elevation: 1,274.00 Quadrangle: CENTERPOINT 7.5'

District: MCELROY County: TYLER

Latitude: 8,575 Feet south of 39 Deg 27 Min 30 Sec.

Longitude: 8,675 Feet west of 80 Deg 40 Min 00 Sec.

Company: EAST RESOURCES, INC.
P.O. BOX 5519
VIENNA, WV 26105-5519

Agent: MICHAEL MCCOWN

Inspector: MIKE UNDERWOOD

Permit Issued: 07/01/03

Well work Commenced: 08/12/03

Well work Completed: 09/02/03

Verbal plugging permission granted on:

Rotary X Cable _____ Rig _____

Total Depth (feet) 3,299

Fresh water depths (ft) NA

Salt water depths (ft) NA

Is coal being mined in area (Y/N) N

Coal Depths (ft): NA

Casing & Tubing Size	Used in Drilling	Left in Well	Cement Fill Up Cu. Ft.
7"	1358.95	1358.95	335 sks
4 1/2"	3274.00'	3274.00'	145 sks

500
Casing 0 1/2
Forward
OCT 31 2003
WV Department of Environmental Protection

OPEN FLOW DATA Waterflood injector

Producing formation Gordon Pay zone depth (ft) 3140'-3159'

Gas: Initial open flow _____ MCF/d Oil: Initial open flow _____ Bbl/d

Final open flow _____ MCF/d Final open flow _____ Bbl/d

Time of open flow between initial and final tests _____ Hours

Static rock pressure _____ psig (surface pressure) after _____ Hours

Second producing formation _____ Pay zone depth (ft) _____

Gas: Initial open flow _____ MCF/d Oil: Initial open flow _____ Bbl/d

Final open flow _____ MCF/d Final open flow _____ Bbl/d

Time of open flow between initial and final tests _____ Hours

Static rock pressure _____ psig (surface pressure) after _____ Hours

NOTE: ON BACK OF THIS FORM, PUT THE FOLLOWING: 1) DETAILS OF PERFORATED INTERVALS, FRACTURING OR STIMULATING, PHYSICAL CHANGE, ETC. 2) THE WELL LOG WHICH IS A SYSTEMATIC DETAILED GEOLOGICAL RECORD OF ALL FORMATIONS, INCLUDING COAL ENCOUNTERED BY THE WELLBORE.

For: EAST RESOURCES, INC.
By: *Ben Held*
Date: 10/30/03

TYL
1749

NOV 1 2003

Treatment :

Treated perforations 3144'-3158' w/ 250 gals 15% HCL, 318 bbls cross linked gel and 19,600# 20/40 sand

Well Log :

Sand and Shale	0'	181'
Sand	181'	186'
Shale	186'	216'
Sand	216'	228'
Shale	228'	462'
Sand	462'	476'
Shale	476'	898'
Sand	898'	964'
Shale	964'	1086'
Sand	1086'	1100'
Shale	1100'	1140'
Sand	1140'	1172'
Shale	1172'	1282'
Sand	1282'	1315'
Shale	1315'	1630'
Sand	1630'	1648'
Shale	1648'	1660'
Sand	1660'	1684'
Shale	1684'	1774'
Sand	1774'	1824'
Shale	1824'	1860'
Sand	1860'	1880'
Shale	1880'	2032'
Sand	2032'	2064'
Shale	2064'	2286'
Sand	2286'	2300'
Shale	2300'	2312'
Big Lime	2312'	2414'
Big Injun	2414'	2568'
Shale	2568'	3130'
Gordon Stray	3130'	3140'
Gordon	3140'	3159'
shale	3159'	3299'
TD	3299'	