

Longitude - 80° 41'30.3"

7,075'

LATITUDE 39° 27' 30"

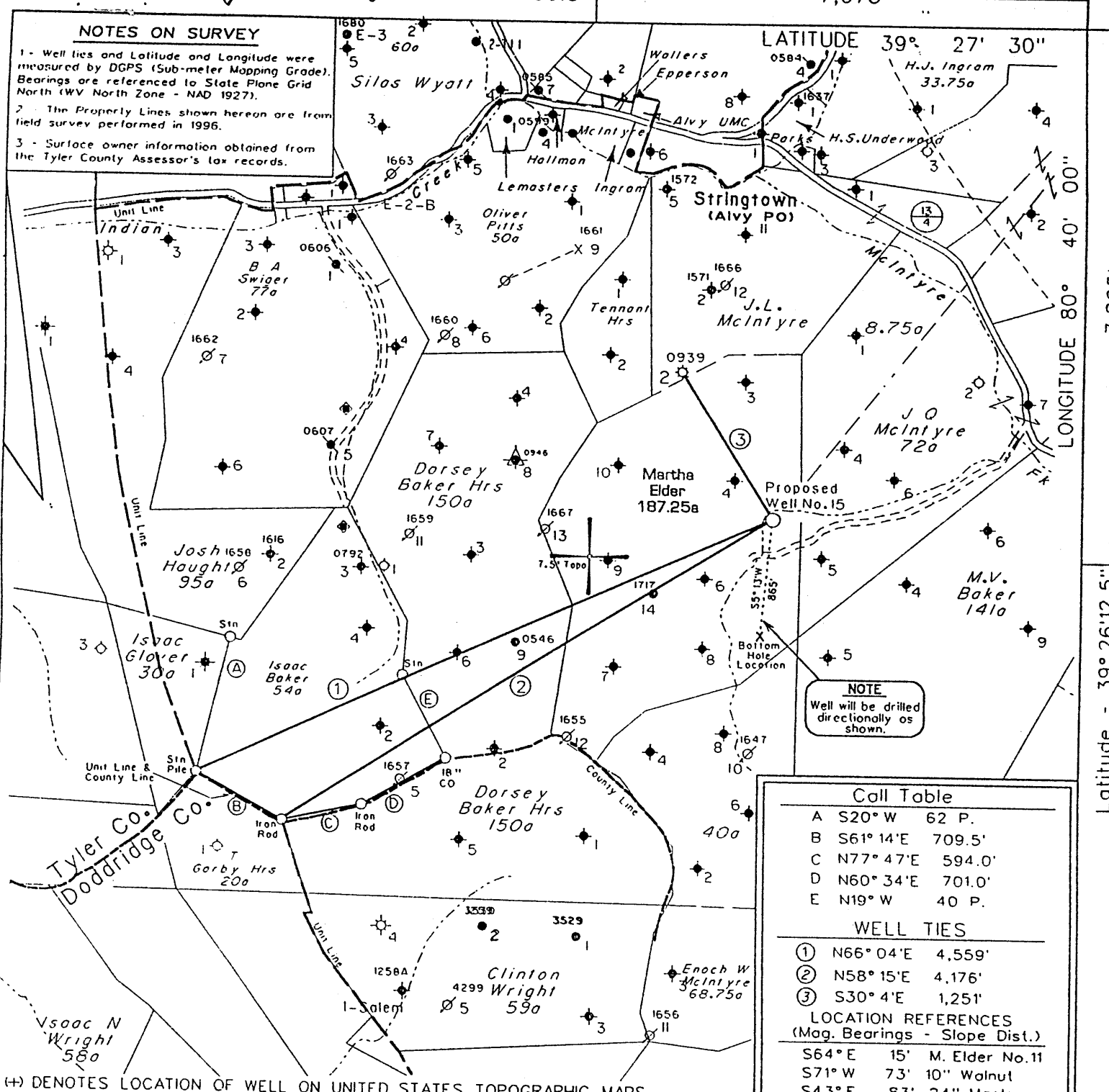
LONGITUDE 80° 40' 00"

7,825'

Latitude - 39° 26'12.5"

NOTES ON SURVEY

- 1 - Well lies and Latitude and Longitude were measured by DGPS (Sub-meter Mapping Grade). Bearings are referenced to State Plane Grid North (WV North Zone - NAD 1927).
- 2 - The Property Lines shown hereon are from field survey performed in 1996.
- 3 - Surface owner information obtained from the Tyler County Assessor's tax records.



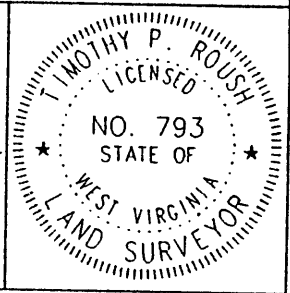
NOTE
Well will be drilled directionally as shown.

Call Table	
A	S20° W 62 P.
B	S61° 14' E 709.5'
C	N77° 47' E 594.0'
D	N60° 34' E 701.0'
E	N19° W 40 P.
WELL TIES	
①	N66° 04' E 4,559'
②	N58° 15' E 4,176'
③	S30° 4' E 1,251'
LOCATION REFERENCES (Mag. Bearings - Slope Dist.)	
S64° E	15' M. Elder No.11
S71° W	73' 10" Walnut
S43° E	83' 24" Maple

FILE NO. 1038-28
 MAP NO. N47 N S1 E W4
 SCALE 1" = 1000'
 MINIMUM DEGREE OF ACCURACY 1 in 200
 PROVEN SOURCE OF ELEVATION M. Elder No.11
 (47-095-1646) - 893'

I THE UNDERSIGNED, HEREBY CERTIFY THAT THIS PLAT IS CORRECT TO THE BEST OF MY KNOWLEDGE AND BELIEF AND SHOWS ALL THE INFORMATION REQUIRED BY LAW AND THE REGULATIONS ISSUED AND PRESCRIBED BY THE DEPARTMENT OF MINES.

(SIGNED) *[Signature]*
 TIMOTHY P. ROUSH PS 793



WEST VIRGINIA
 Division of Environmental Protection
 Office of Oil and Gas
 1356 Hansford St.
 Charleston, West Virginia 25301



DATE June 17, 2003
 FARM Martha Elder NO. 15
 API WELL NO. 47-095-01750LI

WELL TYPE: OIL ___ GAS ___ LIQUID INJECTION WASTE DISPOSAL ___
 (IF "GAS") PRODUCTION ___ STORAGE ___ DEEP ___ SHALLOW ___
 LOCATION: ELEVATION 893' WATERSHED McIntyre Fork
 DISTRICT McElroy COUNTY Tyler
 QUADRANGLE Centerpoint 7.5'

SURFACE OWNER Roy F. Glover Jr. et al. ACREAGE 95.5 Ac.
 OIL & GAS ROYALTY OWNER East Resources, Inc. et al. LEASE ACREAGE 187.25 Ac.
 LEASE NO. 99174-00

PROPOSED WORK: DRILL CONVERT ___ DRILL DEEPER ___ REDRILL ___ FRACTURE OR STIMULATE PLUG OFF OLD FORMATION ___ PERFORATE NEW FORMATION ___ OTHER PHYSICAL CHANGE IN WELL (SPECIFY) ___

PLUG AND ABANDON ___ CLEAN OUT AND REPLUG ___
 TARGET FORMATION Gordon ESTIMATED DEPTH 2,925' TVD
 WELL OPERATOR East Resources, Inc. DESIGNATED AGENT Michael McCown
 ADDRESS P. O. Box 5519 ADDRESS P. O. Box 5519
 Vienna, W.Va. 26105 Vienna, W.Va. 26105

JUL 11 2003

80 Jacksonburg - Stringtown (95)

1705LI 7A1

State of West Virginia
Division of Environmental Protection
Section of Oil and Gas

MB

Well Operator's Report of Well Work

Farm name: GLOVER, RAY F. JR., ETAL

Operator Well No.: MARTHA ELDER 15

LOCATION: Elevation: 893.00

Quadrangle: CENTERPOINT 7.5'

District: MCELROY
Latitude: 7,825 Feet south of
Longitude: 7,075 Feet west of

County: TYLER
39 Deg 27 Min 30 Sec.
80 Deg 40 Min 00 Sec.

Company: EAST RESOURCES, INC.
P.O. BOX 5519
VIENNA, WV 26105-5519

Agent: PHILIP S. ONDRUSEK

Inspector: MIKE UNDERWOOD

Permit Issued: 07/09/03

Well work Commenced: 03/16/04

Well work Completed: 04/29/04

Verbal plugging permission granted on:

Rotary Cable Rig

Total Depth (feet) 3097

Fresh water depths (ft) 38, 95

Salt water depths (ft) NA

NA

Is coal being mined in area (Y/N) N

Coal Depths (ft): NA

Casing & Tubing Size	Used in Drilling	Left in Well	Cement Fill Up Cu. Ft.
8 5/8"	220.00'	220.00'	120 sks
4 1/2"	3041.20'	3041.20'	300 sks

RECEIVED
Office of Oil & Gas
Office of Chief
MAY 20 2004
WV Department of Environmental Protection

OPEN FLOW DATA

WATER INJECTION WELL

This well was directionally drilled with bottom hole location 861' S and 78' W of surface location

Producing formation Gordon Pay zone depth (ft) 2980-2990

Gas: Initial open flow * MCF/d Oil: Initial open flow * Bbl/d
 Final open flow * MCF/d Final open flow * Bbl/d
 Time of open flow between initial and final tests * Hours

Static rock pressure * psig (surface pressure) after Hours

Second producing formation Pay zone depth (ft)

Gas: Initial open flow MCF/d Oil: Initial open flow Bbl/d
 Final open flow MCF/d Final open flow Bbl/d
 Time of open flow between initial and final tests Hours

Static rock pressure psig (surface pressure) after Hours

NOTE: ON BACK OF THIS FORM, PUT THE FOLLOWING: 1) DETAILS OF PERFORATED INTERVALS, FRACTURING OR STIMULATING, PHYSICAL CHANGE, ETC. 2) THE WELL LOG WHICH IS A SYSTEMATIC DETAILED GEOLOGICAL RECORD OF ALL FORMATIONS, INCLUDING COAL ENCOUNTERED BY THE WELLBORE.

965
3097
x=2974

For: EAST RESOURCES, INC.

By: *Bar Elder*
Date: 5/19/04

TYL
1750
050

JUN 18 2004

Treatment :

Treated perforations 2976'-2989' w/ 250 gals 15% HCL, 326 Bbls cross linked gel and 21,000 # 20/40 sand

Well Log :

0	534	Sand and Shale
534	590	Sand
590	762	Shale
762	794	Sand
794	1198	Shale
1198	1222	Sand
1222	1321	Shale
1321	1404	Sand
1404	1610	Shale
1610	1628	Sand
1628	1857	Shale
1857	1884	Sand
1884	2110	Shale
2110	2136	Sand
2136	2196	Big Lime
2196	2387	Big Injun
2387	2962	Shale
2962	2978	Gordon Stray
2978	2990	Gordon
2990	3097	Shale