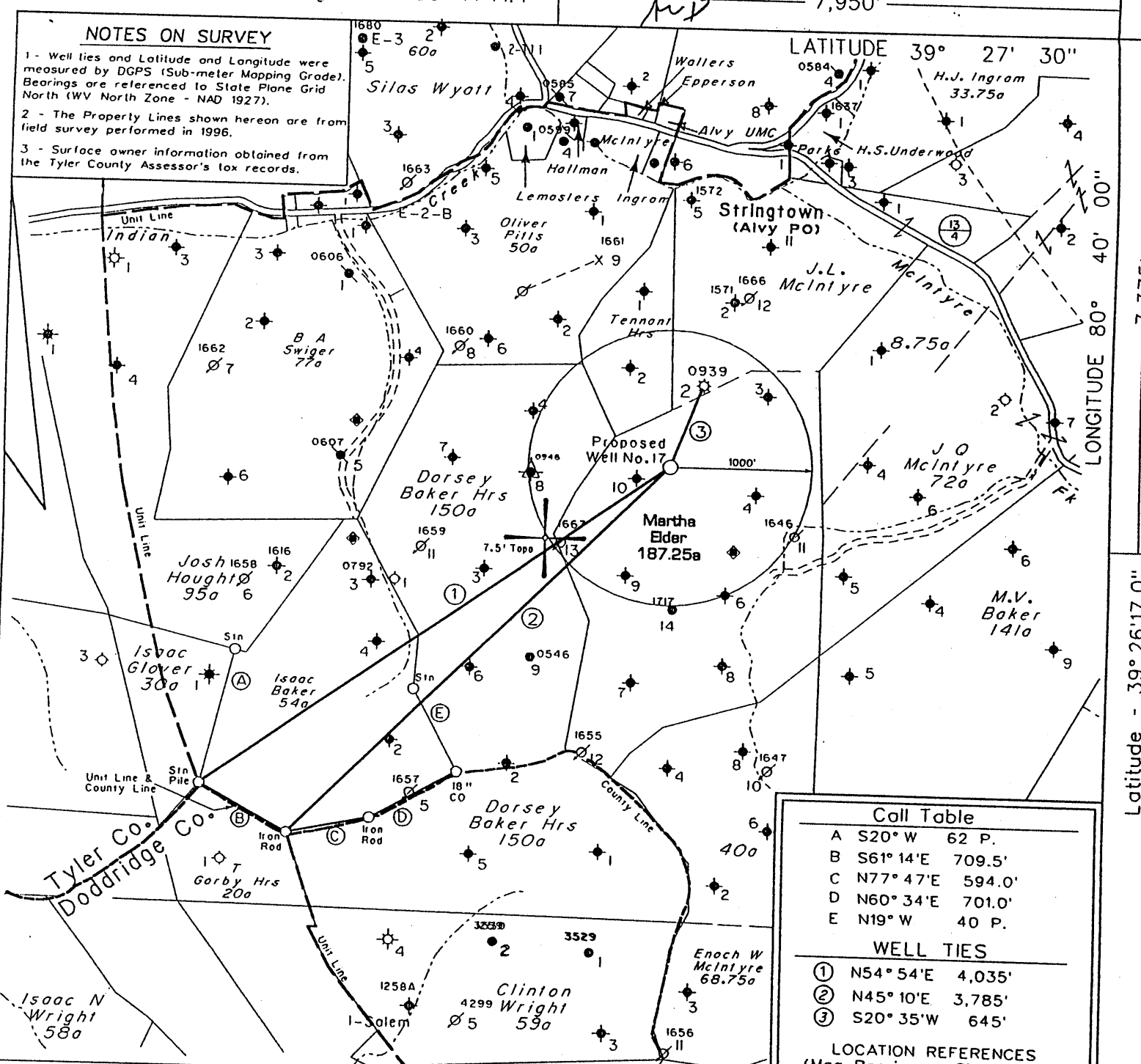


Longitude - 80° 41' 41.4"

7,950'

NOTES ON SURVEY

- 1 - Well ties and Latitude and Longitude were measured by DGPS (Sub-meter Mapping Grade). Bearings are referenced to State Plane Grid North (WV North Zone - NAD 1927).
- 2 - The Property Lines shown hereon are from field survey performed in 1996.
- 3 - Surface owner information obtained from the Tyler County Assessor's tax records.



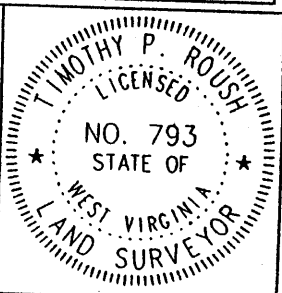
Call Table	
A	S20° W 62 P.
B	S61° 14' E 709.5'
C	N77° 47' E 594.0'
D	N60° 34' E 701.0'
E	N19° W 40 P.
WELL TIES	
①	N54° 54' E 4,035'
②	N45° 10' E 3,785'
③	S20° 35' W 645'
LOCATION REFERENCES (Mag. Bearings - Slope Dist.)	
S68° E 114' 18"	Black Oak
S56° W 95' 6"	Maple

Note: All Known Water Supply Sources Located Within 1000' Of Proposed Well Are Shown  
 (H) DENOTES LOCATION OF WELL ON UNITED STATES TOPOGRAPHIC MAPS

FILE NO. 1039-5  
 MAP NO. N47 N S 1 E W 4  
 SCALE 1" = 1000'  
 MINIMUM DEGREE OF ACCURACY 1 in 200  
 PROVEN SOURCE OF ELEVATION DGPS Survey (Post-Processed Sub-Meter Mapping Grade)

I THE UNDERSIGNED, HEREBY CERTIFY THAT THIS PLAT IS CORRECT TO THE BEST OF MY KNOWLEDGE AND BELIEF AND SHOWS ALL THE INFORMATION REQUIRED BY LAW AND THE REGULATIONS ISSUED AND PRESCRIBED BY THE DEPARTMENT OF MINES.

(SIGNED) [Signature]  
 TIMOTHY P. ROUSH PS 793



WEST VIRGINIA  
 Division of Environmental Protection  
 Office of Oil and Gas  
 1356 Hansford St.  
 Charleston, West Virginia 25301



DATE March 22, 2004  
 FARM Martha Elder NO. 17  
 API WELL NO. 47-095-01771

WELL TYPE: OIL  GAS  LIQUID INJECTION  WASTE DISPOSAL   
 (IF "GAS") PRODUCTION  STORAGE  DEEP  SHALLOW   
 LOCATION: ELEVATION 1,178' WATERSHED McIntyre Fork  
 DISTRICT McElroy COUNTY Tyler  
 QUADRANGLE Centerpoint 7.5'

SURFACE OWNER Roy F. Glover Jr. et al. ACREAGE 95.5 Ac.  
 OIL & GAS ROYALTY OWNER East Resources, Inc. et al. LEASE ACREAGE 187.25 Ac.  
 LEASE NO. 99174-00

PROPOSED WORK: DRILL  CONVERT  DRILL DEEPER  REDRILL  FRACTURE OR STIMULATE  PLUG OFF OLD FORMATION  PERFORATE NEW FORMATION  OTHER PHYSICAL CHANGE IN WELL (SPECIFY) \_\_\_\_\_

PLUG AND ABANDON  CLEAN OUT AND REPLUG   
 TARGET FORMATION Gordon ESTIMATED DEPTH 3,200'

WELL OPERATOR East Resources, Inc. DESIGNATED AGENT Philip S. Ondrusek  
 ADDRESS P. O. Box 5519 ADDRESS P. O. Box 5519  
Vienna, W.Va. 26105 Vienna, W.Va. 26105

(Jacobsonburg - Spruce Knob 95) 6-6

APR 28 2004

Latitude - 39° 26' 17.0"

711

State of West Virginia  
Division of Environmental Protection  
Section of Oil and Gas

Well Operator's Report of Well Work

Farm name: GLOVER, RAY F., JR ETAL

Operator Well No.: MARTHA ELDER 17

LOCATION: Elevation: 1,178.00

Quadrangle: CENTERPOINT 7.5'

District: MCELROY

County: TYLER

Latitude: 7,375 Feet south of 39 Deg 27 Min 30 Sec.

Longitude: 7,950 Feet west of 80 Deg 40 Min 00 Sec.

Company: EAST RESOURCES, INC.  
P.O. BOX 5519  
VIENNA, WV 26105-5519

Agent: PHILIP S. ONDRUSEK

Inspector: MIKE UNDERWOOD

Permit Issued: 04/21/04

Well work Commenced: 05/16/04

Well work Completed: 06/09/04

Verbal plugging permission granted on:

Rotary X Cable \_\_\_\_\_ Rig \_\_\_\_\_

Total Depth (feet) \_\_\_\_\_ 3150

Fresh water depths (ft) \_\_\_\_\_ 80

\_\_\_\_\_

Salt water depths (ft) \_\_\_\_\_ 2200

\_\_\_\_\_ NA

Is coal being mined in area (Y/N) \_\_\_\_\_ N

Coal Depths (ft): \_\_\_\_\_ NA

Casing & Tubing Size	Used in Drilling	Left in Well	Cement Fill Up Cu. Ft.
8 5/8"	466.00'	466.00'	215 sks
4 1/2"	3128.00'	3128.00'	300 sks

Office of Oil & Gas  
AUG 11 2004

WV Department of Environmental Protection

OPEN FLOW DATA

WATER INJECTION WELL

Producing formation Gordon Pay zone depth (ft) 3054-3062

Gas: Initial open flow \_\_\_\_\_ \* MCF/d Oil: Initial open flow \_\_\_\_\_ \* Bbl/d

Final open flow \_\_\_\_\_ \* MCF/d Final open flow \_\_\_\_\_ \* Bbl/d

Time of open flow between initial and final tests \_\_\_\_\_ \* Hours

Static rock pressure \_\_\_\_\_ \* psig (surface pressure) after \_\_\_\_\_ Hours

Second producing formation \_\_\_\_\_ Pay zone depth (ft) 27200

Gas: Initial open flow \_\_\_\_\_ MCF/d Oil: Initial open flow \_\_\_\_\_ Bbl/d

Final open flow \_\_\_\_\_ MCF/d Final open flow \_\_\_\_\_ Bbl/d

Time of open flow between initial and final tests \_\_\_\_\_ Hours

Static rock pressure \_\_\_\_\_ psig (surface pressure) after \_\_\_\_\_ Hours

NOTE: ON BACK OF THIS FORM, PUT THE FOLLOWING: 1) DETAILS OF PERFORATED INTERVALS, FRACTURING OR STIMULATING, PHYSICAL CHANGE, ETC. 2) THE WELL LOG WHICH IS A SYSTEMATIC DETAILED GEOLOGICAL RECORD OF ALL FORMATIONS, INCLUDING COAL ENCOUNTERED BY THE WELLBORE.

For: EAST RESOURCES, INC.

By: [Signature]

Date: 8/10/04

TYL

1771

**Treatment :**

Treated perforations 3054' -3062' w/ 250 gals 15% HCL, 326 Bbls cross linked gel and 20,400 # 20/40 sand

**Well Log :**

0	460	Sand and Shale
460	502	Sand
502	654	Shale
654	669	Sand
669	802	Shale
802	864	Sand
864	1034	Shale
1034	1070	Sand
1070	1186	Shale
1186	1210	Sand
1210	1413	Shale
1413	1443	Sand
1443	1492	Shale
1492	1648	Sand
1648	1921	Shale
1921	2008	Sand
2008	2212	Shale
2212	2300	Big Lime
2300	2472	Big Injun
2472	3018	Shale
3018	3039	Gordon Stray
3039	3066	Gordon
3066	3150	Shale

SEP 17 2004