

State of West Virginia
Department of Environmental Protection - Office of Oil and Gas
Discharge Monitoring Report
Oil and Gas General Permit

Company Name: Triad/Hunter, LLC
API No: 47 095 02004 H + 47-095-02019 County: Tyler
District: McElroy Well No: Weese Hunter 1001 + 1003
Farm Name: Roger R. Weese

Discharge Date/s From: (MMDDYY) 3/27/2011 To: (MMDDYY) 3/28/2011

Discharge Times. From: 3/27 (9)Hrs, 9:00 am to 6:00 pm To: 3/28/2011 (6) Hrs 9:00 am to 3:pm

Total Volume to be Disposed from this facility (gallons): 269,296

Disposal Option(s) Utilized (write volumes in gallons):

- (1) Land Application: 269,296 (Include a topographical map of the Area.)
- (2) UIC: _____ Permit No. _____
- (3) Offsite Disposal: _____ Site Location: _____
- (4) Reuse: _____ Alternate Permit Number: _____
- (5) Centralized Facility: _____ Permit No. _____
- (6) Other method: _____ (Include an explanation)

Follow Instructions below to determine your treatment category:

Optional Pretreatment test: 1200 Cl- mg/l 6.0 DO mg/l

1. Do you have permission to use expedited treatment from the Director or his representative?
(Y/N) n If yes, who? _____ and place a four (4) on line 7.
If not go to line 2
2. Was Frac Fluid or flowback put into the pit? (Y/N) n If yes, go to line 5. If not, go to line 3.
3. Do you have a chloride value pretreatment (see above)? (Y/N) _____ If yes, go to line 4
If not, go to line 5.
4. Is the Chloride level less than 5000 mg/l? (Y/N) _____ If yes, then enter a one (1) on line 7.
5. Do you have a pretreatment value for DO? (See above) (Y/N) y If yes, go to line 6
If not, enter a three (3) in line 7.
6. Is the DO level greater than 2.5 mg/l? (Y/N) y If yes, enter a two (2) on line 7. If not, enter a three (3) on line 7.
7. 2 is the category of your pit. Use the Appropriate section.
8. Comments on Pit condition: _____

Name of Principal Exec. Officer: Jeff Brammer
Title of Officer: Vice-President
Date Completed: 4/18/11

I certify under penalty of law that I have personally examined and am familiar with the information submitted on this document and all the attachments and that, based on my inquiry of those individuals immediately responsible for obtaining the information I believe that the information is true, accurate, and complete. I am aware that there are significant penalties for submitting false information, including the possibility of fine and imprisonment.

X Jeffery D. Brammer 4/21/11
Signature of a Principal Exec. Officer or Authorized agent.

JPT
6-16-11

med
6-20-11

Category 1
Sampling Results
API No: _____

Parameter	Predischarge		Discharge		Units
	Limits	Reported	Limits	Reported	
pH	6-10	_____	6-10	_____	S.U
Settling Time	5	_____	N/A	N/A	Days
Fe	6	_____	6	_____	mg/l
D.O.	2.5	_____	2.5	_____	mg/l
Settleable Sol.	0.5	_____	0.5	_____	mg/l
Cl	5,000	_____	5,000	_____	mg/l
Oil	Trace	_____	Trace	_____	Obs.
TOC**		_____	Monitor	_____	mg/l
Oil and Grease		_____	Monitor	_____	mg/l
Total Al***		_____	Monitor	_____	mg/l
TSS		_____	Monitor	_____	mg/l
Total Mn	Monitor	_____	Monitor	_____	mg/l
Volume		_____	Monitor	_____	Gal
Flow		_____	Monitor	_____	Gal/min
Disposal Area		_____	Monitor	_____	Acres

*** Al is only reported if the pH is above 9.0

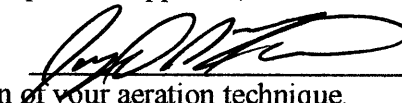
Category 2
Sampling Results

API No: 47 095 02004 H + 47-095-02019

Parameter	Predischarge		Discharge		Units
	Limits	Reported	Limits	Reported	
pH	6-10	6.0	6-10	8.71	S.U
Settling Time	10	10	N/A	N/A	Days
Fe	6	0	6	0	mg/l
D.O.	2.5	6.0	2.5	8.71	mg/l
Settleable Sol.	0.5	<.20	0.5	<.20	mg/l
Cl*	12,500	1200	12,500	1590	mg/l
Oil	Trace	Trace	Trace	Trace	Obs.
TOC**		_____	Monitor	_____	mg/l
Oil and Grease		_____	Monitor	0.5	mg/l
Total Al***		_____	Monitor	_____	mg/l
TSS		_____	Monitor	_____	mg/l
Total Mn	Monitor	0	Monitor	0	mg/l
Volume		_____	Monitor	269296	Gal
Flow		_____	Monitor	299.2	Gal/min
Disposal Area		_____	Monitor	8.0	Acres

* Can be 25,000 with inspector's approval,

(Inspector's signature):



** Include a description of your aeration technique.

*** Al is only reported if the pH is above 9.0

Date: 6-16-11

Aeration Code: 91

Aeration Technique

Pit was circulated by placing a Pump with suction in one end of pit and discharged the fluid into the other end of the pit. We added lime to the discharge end into pit. Pit was circulated for two volumes of the pit.

Field samples of pit water was taken to determine pre discharge parameters.

Any oil present was removed from suction/discharge area of pit.

Samples were taken at various points of the discharge for the Lab.

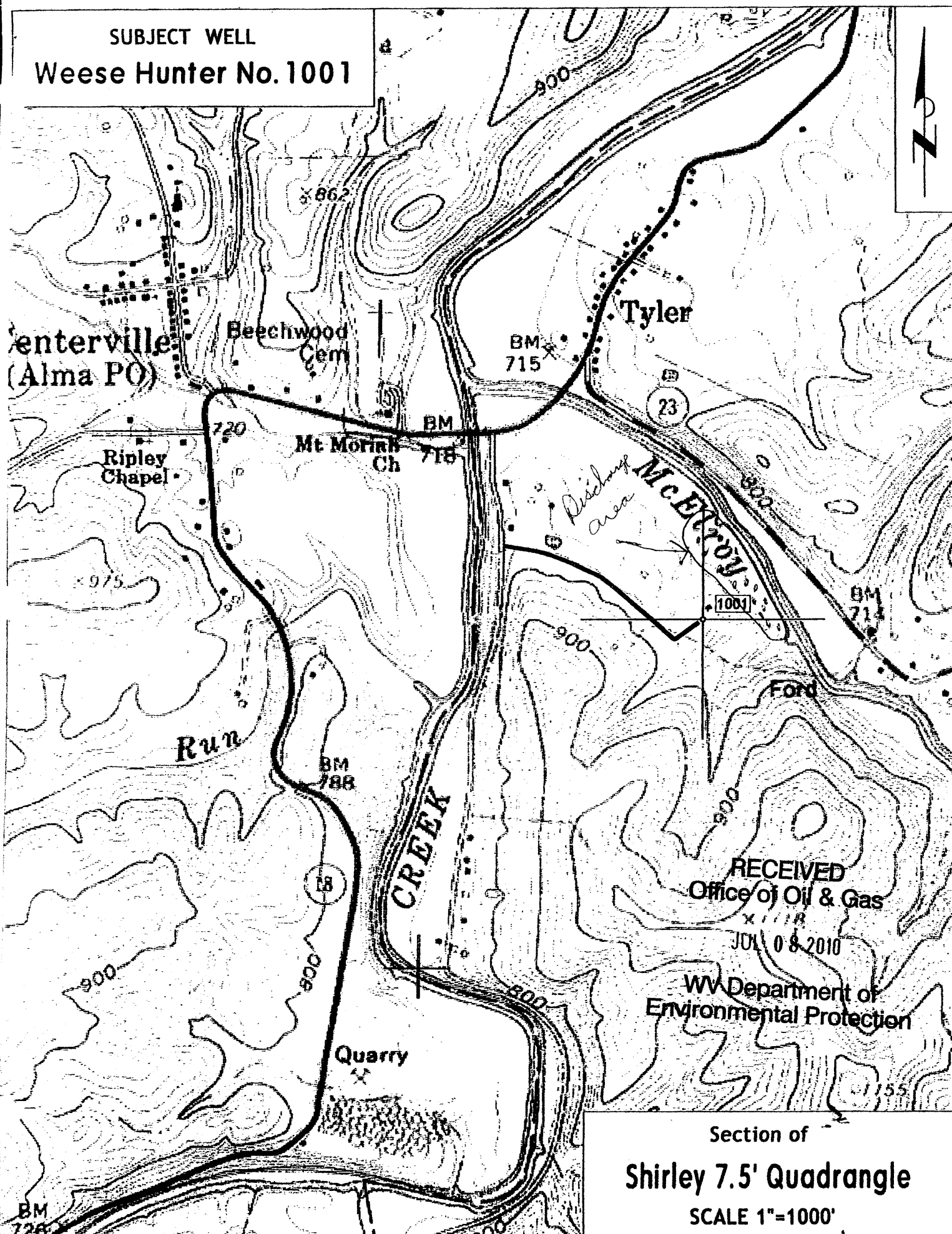
J & J Oil and Gas Consultants
Rt. 1, Box 101-A
Ripley, WV 25271


Jerry M. Tephabock

Ph: 304 532 2441


6-16-11

SUBJECT WELL
Weese Hunter No. 1001



RECEIVED
Office of Oil & Gas
XIII
JUL 08 2010

WV Department of
Environmental Protection

Section of
Shirley 7.5' Quadrangle
SCALE 1"=1000'