

Surface Longitude - 80° 54' 25.99"

9,089'

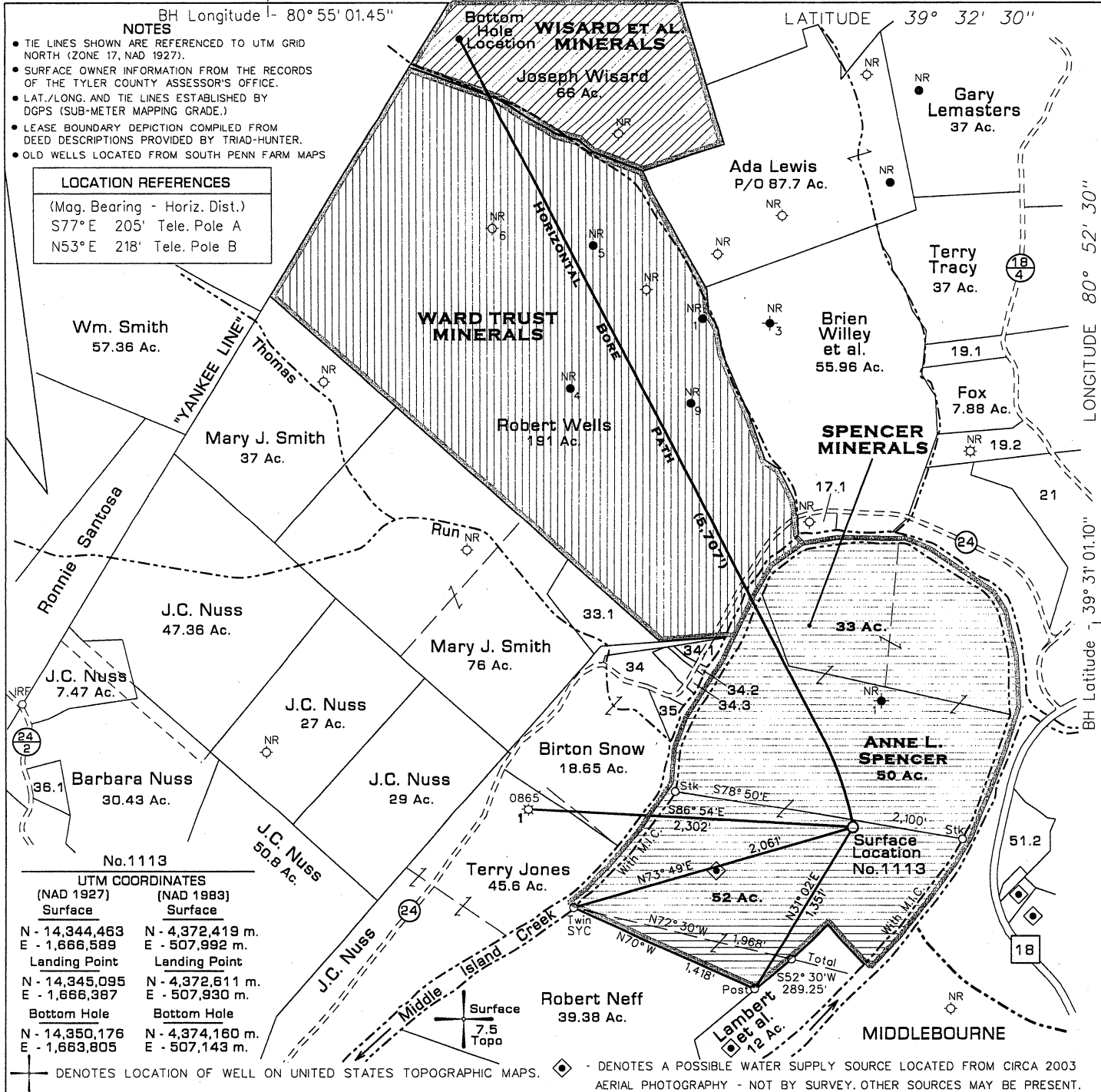
BH Longitude - 80° 55' 01.45"

LATITUDE 39° 32' 30"

- NOTES**
- TIE LINES SHOWN ARE REFERENCED TO UTM GRID NORTH (ZONE 17, NAD 1927).
 - SURFACE OWNER INFORMATION FROM THE RECORDS OF THE TYLER COUNTY ASSESSOR'S OFFICE.
 - LAT./LONG. AND TIE LINES ESTABLISHED BY DGPS (SUB-METER MAPPING GRADE.)
 - LEASE BOUNDARY DEPICTION COMPILED FROM DEED DESCRIPTIONS PROVIDED BY TRIAD-HUNTER.
 - OLD WELLS LOCATED FROM SOUTH PENN FARM MAPS

LOCATION REFERENCES

(Mag. Bearing - Horiz. Dist.)
 S77°E 205' Tele. Pole A
 N53°E 218' Tele. Pole B



No. 1113

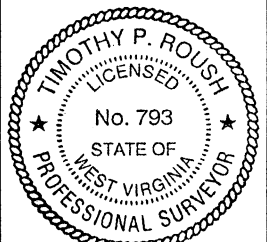
UTM COORDINATES (NAD 1927)		UTM COORDINATES (NAD 1983)	
Surface		Surface	
N - 14,344,463	E - 1,666,589	N - 4,372,419 m.	E - 507,992 m.
Landing Point		Landing Point	
N - 14,345,095	E - 1,666,387	N - 4,372,611 m.	E - 507,930 m.
Bottom Hole		Bottom Hole	
N - 14,350,176	E - 1,663,805	N - 4,374,160 m.	E - 507,143 m.

◆ DENOTES LOCATION OF WELL ON UNITED STATES TOPOGRAPHIC MAPS. ◆ DENOTES A POSSIBLE WATER SUPPLY SOURCE LOCATED FROM CIRCA 2003 AERIAL PHOTOGRAPHY - NOT BY SURVEY. OTHER SOURCES MAY BE PRESENT.

FILE NO. 115-61
 DRAWING NO. 1113-Revised
 SCALE 1" = 1000'
 MINIMUM DEGREE OF ACCURACY Sub-Meter
 PROVEN SOURCE OF ELEVATION DGPS Survey

I THE UNDERSIGNED, HEREBY CERTIFY THAT THIS PLAT IS CORRECT TO THE BEST OF MY KNOWLEDGE AND BELIEF AND SHOWS ALL THE INFORMATION REQUIRED BY LAW AND THE REGULATIONS ISSUED AND PRESCRIBED BY THE DEPARTMENT OF MINES.

(SIGNED) [Signature]
 TIMOTHY P. ROUSH PS 793



WEST VIRGINIA
 Division of Environmental Protection
 Office of Oil and Gas
 601 57th Street
 Charleston, West Virginia 25304



DATE August 6, 2011
 FARM Spencer Unit No. 1113-Rev.
 API WELL NO. 47-095-02034H

WELL TYPE: OIL GAS X LIQUID INJECTION WASTE DISPOSAL
 (IF "GAS") PRODUCTION X STORAGE DEEP SHALLOW X HORIZONTAL X
 LOCATION: ELEVATION 703' WATERSHED Middle Island Creek
 DISTRICT Ellsworth COUNTY Tyler
 QUADRANGLE Paden City 7.5'

SURFACE OWNER Anne L. Spencer ACREAGE 52 Ac.
 OIL & GAS ROYALTY OWNER Spencer & Ward Trust LEASE ACREAGE 573.5 Ac. (Spencer Unit)
 LEASE NO.

PROPOSED WORK: DRILL X CONVERT DRILL DEEPER REDRILL FRACTURE OR STIMULATE X PLUG OFF OLD FORMATION PERFORATE NEW FORMATION OTHER PHYSICAL CHANGE IN WELL (SPECIFY) Drill horizontal shallow well.

PLUG AND ABANDON CLEAN OUT AND REPLUG
 TARGET FORMATION Marcellus Shale ESTIMATED DEPTH 5,967'(TVD) 12,074' (MD)
 WELL OPERATOR Triad Hunter, LLC DESIGNATED AGENT Kimberly Arnold
 ADDRESS 777 Post Oak Blvd., Suite 910 ADDRESS P.O. Box 154
Houston, TX 77056 Waverly, WV 26184

FORM IV-6

Surface Latitude - 39° 30' 04.59"