

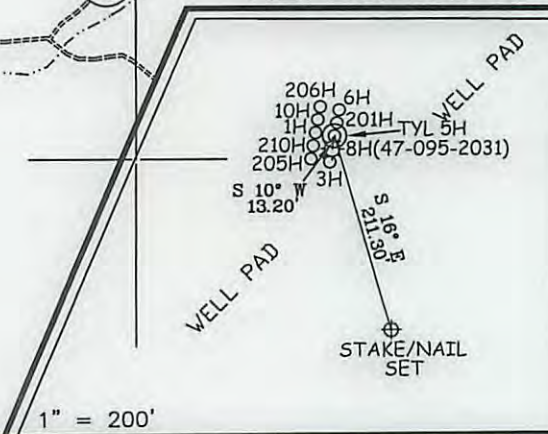
KIRK HADLEY LEASE WELL NO. TYL 5H

WELL NO. TYL 5H STATE PLANE COORDINATES (NORTH ZONE NAD 27) N. 354,040 E. 1,595,624 WELL NO. TYL 5H (NAD'27) LAT=(N) 39.46320 LONG=(W) 80.93231 WELL NO. TYL 5H (NAD'27) LAT=(N) 39°27'47.5" LONG=(W) 80°55'56.3" WELL NO. TYL 5H (NAD'83) LAT=(N) 39.46328 LONG=(W) 80.93214 WELL NO. TYL 5H (NAD'83) LAT=(N) 39°27'47.8" LONG=(W) 80°55'55.7" UTM (NAD'83) N. 4,368,191 E. 505,837	WELL NO. TYL 5H "KICK OUT" POINT STATE PLANE COORDINATES (NORTH ZONE NAD 27) N. 354,358 E. 1,596,450 "KICK OUT" POINT (NAD'27) LAT=(N) 39.46411 LONG=(W) 80.92940 "KICK OUT" POINT (NAD'27) LAT=(N) 39°27'50.8" LONG=(W) 80°55'45.9" "KICK OUT" POINT (NAD'83) LAT=(N) 39.46419 LONG=(W) 80.92923 "KICK OUT" POINT (NAD'83) LAT=(N) 39°27'51.1" LONG=(W) 80°55'45.2" UTM (NAD'83) N. 4,368,292 E. 506,068
WELL NO. TYL 5H TANGENT POINT STATE PLANE COORDINATES (NORTH ZONE NAD 27) N. 354,831 E. 1,596,286 TANGENT POINT (NAD'27) LAT=(N) 39.46540 LONG=(W) 80.93001 TANGENT POINT (NAD'27) LAT=(N) 39°27'55.4" LONG=(W) 80°55'48.0" TANGENT POINT (NAD'83) LAT=(N) 39.46548 LONG=(W) 80.92984 TANGENT POINT (NAD'83) LAT=(N) 39°27'55.7" LONG=(W) 80°55'47.4" UTM (NAD'83) N. 4,368,435 E. 506,035	WELL NO. TYL 5H BOTTOM HOLE STATE PLANE COORDINATES (SOUTH ZONE NAD 27) N. 361,283 E. 1,594,064 BOTTOM HOLE (NAD'27) LAT=(N) 39.48301 LONG=(W) 80.93824 BOTTOM HOLE (NAD'27) LAT=(N) 39°28'58.8" LONG=(W) 80°56'17.7" BOTTOM HOLE (NAD'83) LAT=(N) 39.48309 LONG=(W) 80.93808 BOTTOM HOLE (NAD'83) LAT=(N) 39°28'59.1" LONG=(W) 80°56'17.1" UTM (NAD'83) N. 4,370,390 E. 505,325

NOTES ON SURVEY

1. TIES TO WELLS, REFERENCES, AND CORNERS ARE BASED ON GRID NORTH FOR THE WV STATE PLANE COORDINATE SYSTEM NORTH ZONE NAD '27.
2. LEASE BOUNDARY SHOWN HEREON TAKEN FROM DEED BOOK 213 PAGE 74, DEED BOOK 88 PAGE 159, AND ADJOINING DEEDS.
3. SURFACE OWNER AND ADJOINER INFORMATION TAKEN FROM THE ASSESSOR AND COUNTY CLERK RECORDS OF TYLER COUNTY IN JULY, 2011.
4. WELL COORDINATES ESTABLISHED BY SURVEY GRADE GPS.

REFERENCES



LOT	TAXMAP/PARCEL	OWNER	ACERS ±	LEASE NUMBER
A	26/12	KIRK HADLEY	16 OF 162	1-291161-000
B	26/12	KIRK HADLEY	15 OF 162	1-309171-002
C	26/12	KIRK HADLEY	15 OF 162	3-034617-000
D	26/12	KIRK HADLEY	16 OF 162	1-309171-003
E	26/12	KIRK HADLEY	55 OF 162	1-309171-001
F	26/12	KIRK HADLEY	45 OF 162	1-309171-004
G	25/2	JAMES & ANGELA LONG	75	1-309110-001 THROUGH 1-309110-014 & 1-292575-001
H	19/54	DEBORAH SUSAN REED	100	1-355081-000
I	19/53	DEBORAH SUSAN REED	3	1-291107-011 & 1-292575-001
K	19/52	RUTH MOORE	188.36	1-281598-001 & 1-292575-001
L	26/1	RUTH MOORE ETAL	61.78	1-291085-001, 1-291085-006, 1-291085-011, 1-291085-012, 1-291085-015, 1-324901-001, 1-292575-001



I THE UNDERSIGNED, HEREBY CERTIFY THAT THIS PLAT IS CORRECT TO THE BEST OF MY KNOWLEDGE AND BELIEF AND SHOWS ALL THE INFORMATION REQUIRED BY LAW AND THE REGULATIONS ISSUED AND PRESCRIBED BY THE DIVISION OF ENVIRONMENTAL PROTECTION.

P.S. 677 *Gregory A. Smith*

(+) DENOTES LOCATION OF WELL ON UNITED STATES TOPOGRAPHIC MAPS.
 DATE AUGUST 9, 20 12
 OPERATORS WELL NO. KIRK HADLEY TYL 5H
 API WELL NO. 47 - 95 - 2069H6A
 STATE COUNTY PERMIT

MINIMUM DEGREE OF ACCURACY 1/200 FILE NO. 7422P5HR2 (308-50)
 PROVEN SOURCE OF ELEVATION DGPS (SUBMETER MAPPING GRADE) SCALE 1" = 2,000'

STATE OF WEST VIRGINIA
 DIVISION OF ENVIRONMENTAL PROTECTION
 OFFICE OF OIL AND GAS

WELL TYPE: OIL ___ GAS X LIQUID INJECTION ___ WASTE DISPOSAL ___ IF "GAS" PRODUCTION X STORAGE ___ DEEP ___ SHALLOW X

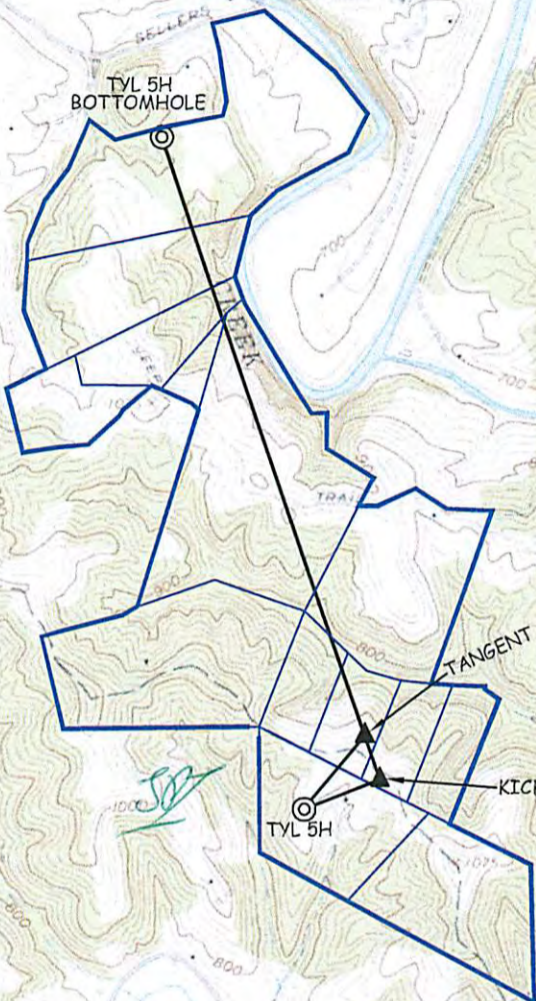
LOCATION: ELEVATION 911' WATERSHED LITTLE SANCHO CREEK
 DISTRICT MEADE COUNTY TYLER QUADRANGLE MIDDLEBOURNE 7.5'
 SURFACE OWNER KIRK HADLEY ACREAGE 162±
 ROYALTY OWNER KIRK HADLEY, ET AL (16, 15, 15, 16, 45 & 55 OF 162, 61.78, 75, 100, 188.36, & 3 ACRES±)

PROPOSED WORK: LEASE NO. _____
 DRILL X CONVERT ___ DRILL DEEPER ___ REDRILL ___ FRACTURE OR STIMULATE X PLUG OFF OLD
 FORMATION ___ PERFORATE NEW FORMATION ___ PLUG AND ABANDON ___ CLEAN OUT AND REPLUG ___ OTHER ___
 PHYSICAL CHANGE IN WELL (SPECIFY) TARGET FORMATION MARCELLUS
 ESTIMATED DEPTH 6,190' TVD / 13,429' TMD

WELL OPERATOR CHESAPEAKE APPALACHIA, LLC. DESIGNATED AGENT ERIC B. GILLESPIE
 ADDRESS P.O. BOX 18496 ADDRESS P.O. BOX 6070
 OKLAHOMA CITY, OK 73154-0496 CHARLESTON, WV 25362

11/23/2012

**KIRK HADLEY
TYL 5H**



RECEIVED
Office of Oil & Gas

SEP 11 2012

WV Department of
Environmental Protection

RECEIVED
Office of Oil & Gas



SLS
SMITH LAND SURVEYING, INC.
P.O. BOX 150 GLENVILLE, WV 26351
PH: (304) 462-5634 FAX: (304) 462-5656 E-MAIL: sls@slssurveys.com

TYLER COUNTY		
MIDDLEBOURNE, WV 7.5' QUAD		
DRAWN BY C.P.M.	FILE NO. 7425HR27TOP.DWG	DATE 08-09-12

OPERATOR:
CHESAPEAKE APPALACHIA, LLC.
P.O. BOX 6070
CHARLESTON, WV 25362

11/23/2012