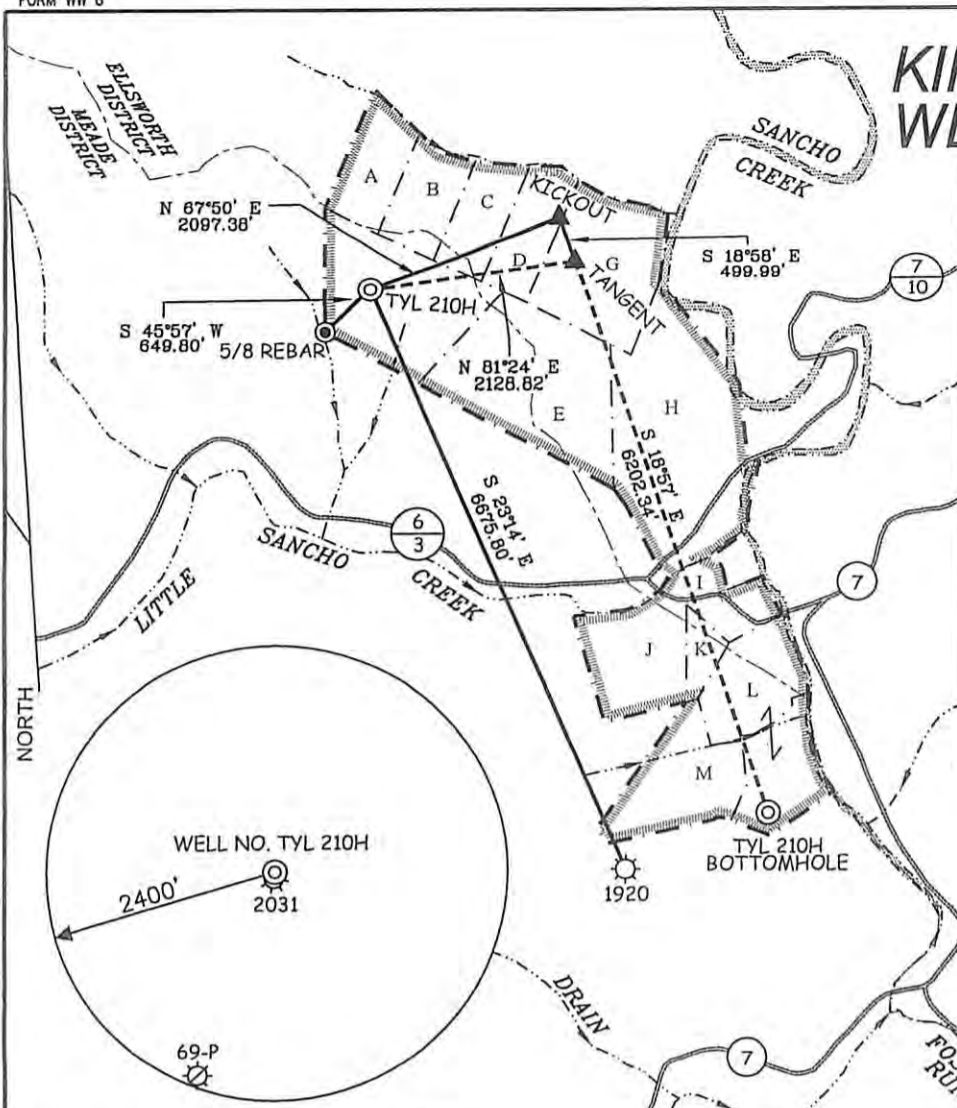


# KIRK HADLEY LEASE WELL NO. TYL 210H

LONGITUDE 80°55'00"



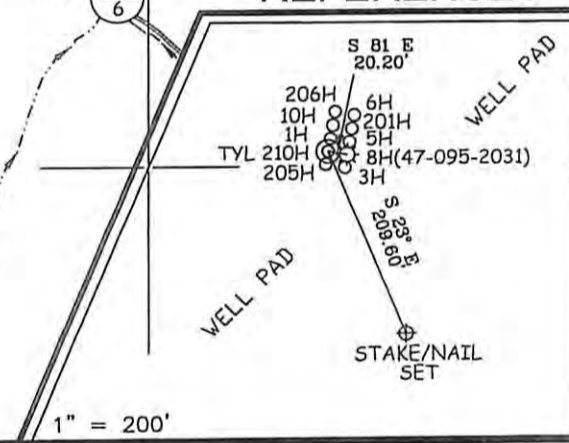
WELL NO. TYL 210H STATE PLANE COORDINATES (SOUTH ZONE NAD '27) N. 354,031 E. 1,595,601 WELL NO. TYL 210H (NAD'27) LAT=(N) 39.46317 LONG=(W) 80.93239 WELL NO. TYL 210H (NAD'27) LAT=(N) 39.46325 LONG=(W) 80°55'56.6" WELL NO. TYL 210H (NAD'83) LAT=(N) 39.46322 LONG=(W) 80.93222 WELL NO. TYL 210H (NAD'83) LAT=(N) 39°27'47.4" LONG=(W) 80°55'56.0" UTM (NAD'83) N. 4,368,188 E. 505,831	WELL NO. TYL 210H "KICK OUT" POINT STATE PLANE COORDINATES (NORTH ZONE NAD '27) N. 354,822 E. 1,597,544 "KICK OUT" POINT (NAD'27) LAT=(N) 39.46543 LONG=(W) 80.92596 "KICK OUT" POINT (NAD'27) LAT=(N) 39.46551 LONG=(W) 80°55'32.0" "KICK OUT" POINT (NAD'83) LAT=(N) 39.46551 LONG=(W) 80.92539 "KICK OUT" POINT (NAD'83) LAT=(N) 39°27'55.8" LONG=(W) 80°55'31.4" UTM (NAD'83) N. 4,368,439 E. 506,418
WELL NO. TYL 210H TANGENT POINT STATE PLANE COORDINATES (NORTH ZONE NAD '27) N. 354,349 E. 1,597,706 TANGENT POINT (NAD'27) LAT=(N) 39.46414 LONG=(W) 80.92495 TANGENT POINT (NAD'27) LAT=(N) 39°27'50.9" LONG=(W) 80°55'29.8" TANGENT POINT (NAD'83) LAT=(N) 39.46421 LONG=(W) 80.92478 TANGENT POINT (NAD'83) LAT=(N) 39°27'51.2" LONG=(W) 80°55'29.2" UTM (NAD'83) N. 4,368,296 E. 505,470	WELL NO. TYL 210H BOTTOM HOLE STATE PLANE COORDINATES (SOUTH ZONE NAD '27) N. 348,483 E. 1,599,720 BOTTOM HOLE (NAD'27) LAT=(N) 39.44812 LONG=(W) 80.91749 BOTTOM HOLE (NAD'27) LAT=(N) 39°28'53.2" LONG=(W) 80°55'03.0" BOTTOM HOLE (NAD'83) LAT=(N) 39.44820 LONG=(W) 80.91732 BOTTOM HOLE (NAD'83) LAT=(N) 39°28'53.5" LONG=(W) 80°55'02.4" UTM (NAD'83) N. 4,366,519 E. 507,114

### NOTES ON SURVEY

1. TIES TO WELLS, REFERENCES, AND CORNERS ARE BASED ON GRID NORTH FOR THE WV STATE PLANE COORDINATE SYSTEM NORTH ZONE NAD '27.
2. LEASE BOUNDARY SHOWN HEREON TAKEN FROM DEED BOOK 213 PAGE 74, DEED BOOK 88 PAGE 159, AND ADJOINING DEEDS.
3. SURFACE OWNER AND ADJOINER INFORMATION TAKEN FROM THE ASSESSOR AND COUNTY CLERK RECORDS OF TYLER COUNTY IN JULY, 2011.
4. WELL COORDINATES ESTABLISHED BY SURVEY GRADE GPS.

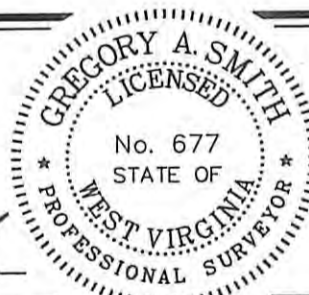
### REFERENCES

LOT	TAXMAP/PARCEL	OWNER	ACERS ±	LEASE NUMBER
A	26/12	KIRK HADLEY	16 OF 162	1-291161-000
B	26/12	KIRK HADLEY	15 OF 162	1-309171-002
C	26/12	KIRK HADLEY	15 OF 162	3-034617-000
D	26/12	KIRK HADLEY	16 OF 162	1-309171-003
E	26/12	KIRK HADLEY	55 OF 162	1-309171-001
F	26/12	KIRK HADLEY	45 OF 162	1-309171-004
G	26/11	KIRK HADLEY	40	1-291161-000
H	26/13	RONALD STEVENS	78.23	1-309184-001 THROUGH 1-309184-011, 1-355078-001
I	26/31	E. LIVINGSTON	13.43	1-309184-001 THROUGH 1-309184-011, 1-355078-001
J	3/5	E. LIVINGSTON	25	1-344616-001
K	26/32	E. LIVINGSTON	3.1	1-343782-001
L	3/6	MATTHEW CHILDERS	54.17	1-291181-002
M	3/7	MATTHEW CHILDERS	27.25	1-291181-002 & 1-324934-001



I THE UNDERSIGNED, HEREBY CERTIFY THAT THIS PLAT IS CORRECT TO THE BEST OF MY KNOWLEDGE AND BELIEF AND SHOWS ALL THE INFORMATION REQUIRED BY LAW AND THE REGULATIONS ISSUED AND PRESCRIBED BY THE DIVISION OF ENVIRONMENTAL PROTECTION.

P.S. 677  
*Gregory A. Smith*



(+) DENOTES LOCATION OF WELL ON UNITED STATES TOPOGRAPHIC MAPS.  
 DATE AUGUST 9, 20 12  
 OPERATORS WELL NO. KIRK HADLEY TYL 210H  
 API WELL NO. 47 - 95 - 2070H/A  
 STATE COUNTY PERMIT

MINIMUM DEGREE OF ACCURACY 1/200 FILE NO. 7422P210HR2 (308-50)  
 PROVEN SOURCE OF ELEVATION DGPS (SUBMETER MAPPING GRADE) SCALE 1" = 2,000'

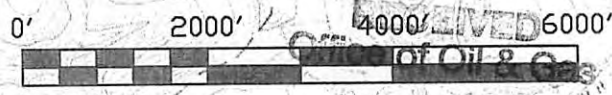
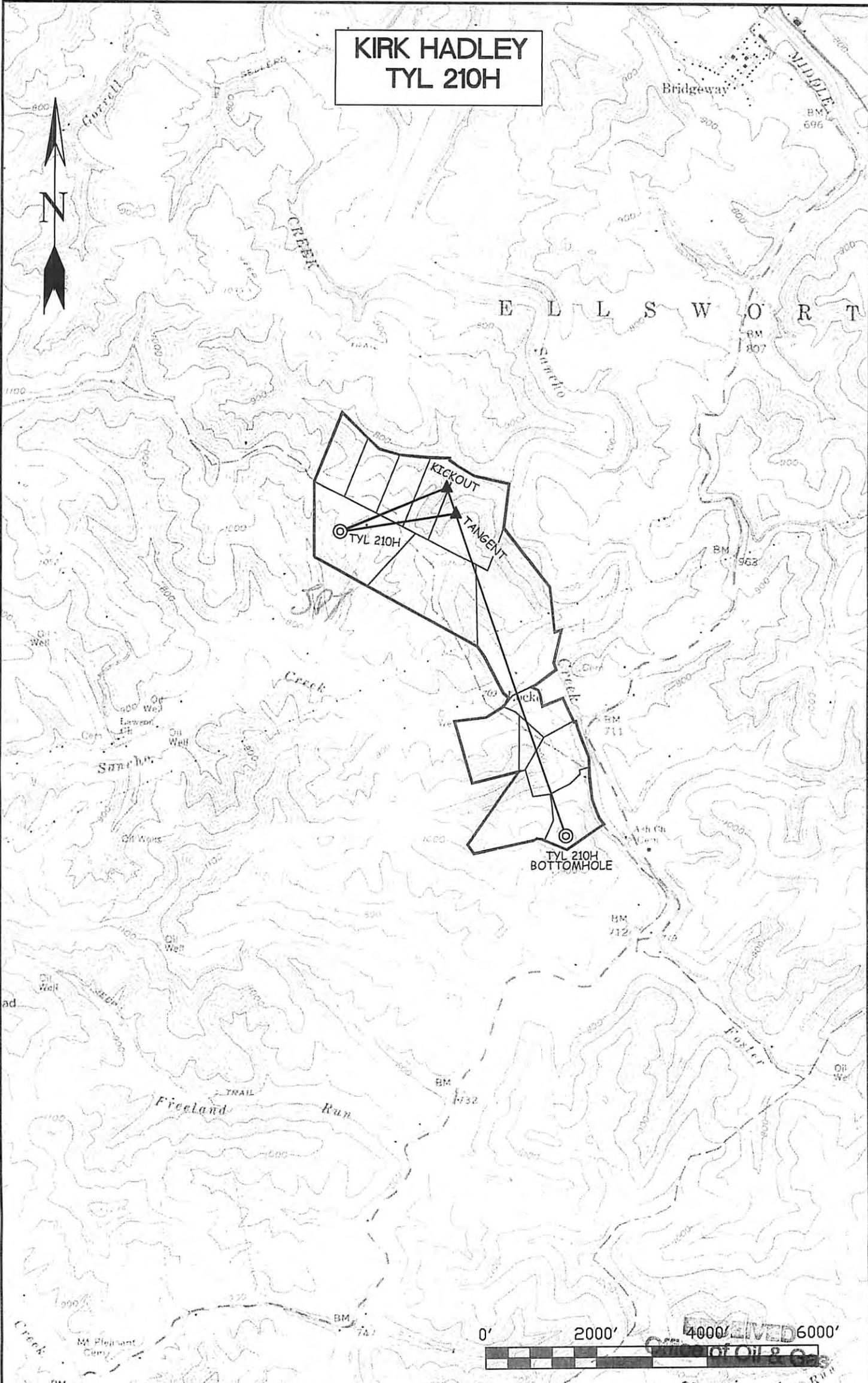
STATE OF WEST VIRGINIA  
 DIVISION OF ENVIRONMENTAL PROTECTION  
 OFFICE OF OIL AND GAS

WELL TYPE: OIL  GAS  LIQUID INJECTION  WASTE DISPOSAL  IF "GAS" PRODUCTION  STORAGE  DEEP  SHALLOW

LOCATION: ELEVATION 911' WATERSHED LITTLE SANCHO CREEK  
 DISTRICT MEADE COUNTY TYLER QUADRANGLE MIDDLEBOURNE 7.5'  
 SURFACE OWNER KIRK HADLEY ACREAGE 162±  
 ROYALTY OWNER KIRK HADLEY, ET AL (16, 15, 15, 16, 45 & 55 OF 162, 40, 78.23, 13.43, 25, 3.1, 54.17, & 27.25 ACRES±)  
 PROPOSED WORK: DRILL  CONVERT  DRILL DEEPER  REDRILL  FRACTURE OR STIMULATE  PLUG OFF OLD FORMATION  PERFORATE NEW FORMATION  PLUG AND ABANDON  CLEAN OUT AND REPLUG  OTHER   
 PHYSICAL CHANGE IN WELL (SPECIFY) \_\_\_\_\_ TARGET FORMATION MARCELLUS  
 ESTIMATED DEPTH TVD 6,200' / TMD 13,153'

WELL OPERATOR CHESAPEAKE APPALACHIA, LLC. DESIGNATED AGENT ERIC B. GILLESPIE  
 ADDRESS P.O. BOX 18496 ADDRESS P.O. BOX 6070  
OKLAHOMA CITY, OK 73154-0496 CHARLESTON, WV 25362

**KIRK HADLEY  
TYL 210H**



**SLS**  
SMITH LAND SURVEYING, INC.  
P.O. BOX 150 GLENVILLE, WV, 26351  
PH: (304) 462-5634 FAX: (304) 462-5656 E-MAIL: sls@sls-surveys.com

**TYLER COUNTY**  
MIDDLEBOURNE, WV 7.5' QUAD

DRAWN BY C.P.M.	FILE NO. 7422P210HR2TOP0.DWG	DATE 08-09-12
--------------------	---------------------------------	------------------

OPERATOR:  
**CHESAPEAKE APPALACHIA, LLC.**  
P.O. BOX 6070  
CHARLESTON, WV 25362

SEP 11 2012

11/30/2012