

81020578



Antero Resources
Thorkildson Unit 1H
Tyler County WV
Northing: 14306205.13
Easting: 1713812.23
As Drilled

WELL DETAILS: Thorkildson Unit 1H

+N/-S	+E/-W	Northing	Ground Level	749.0	Longitude	Slot
0.0	0.0	14306205.13	Easting	1713812.23	Latitude	
					39° 23' 45.407 80° 44' 24.728 W	

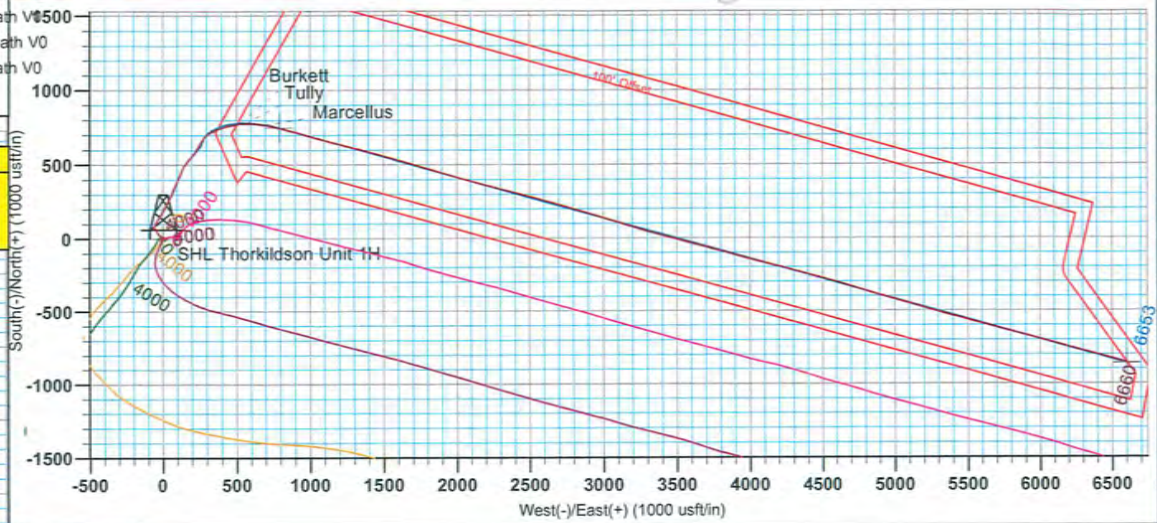


To convert Magnetic North to Grid, Subtract 8.64°
 To convert True North to Grid, Subtract 0.16°

Azimuths to Grid North
 True North: -0.17°
 Magnetic North: -8.64°
 Magnetic Field
 Strength: 52513.3nT
 Dip Angle: 67.02°
 Date: 2/4/2013
 Model: IGRF2010

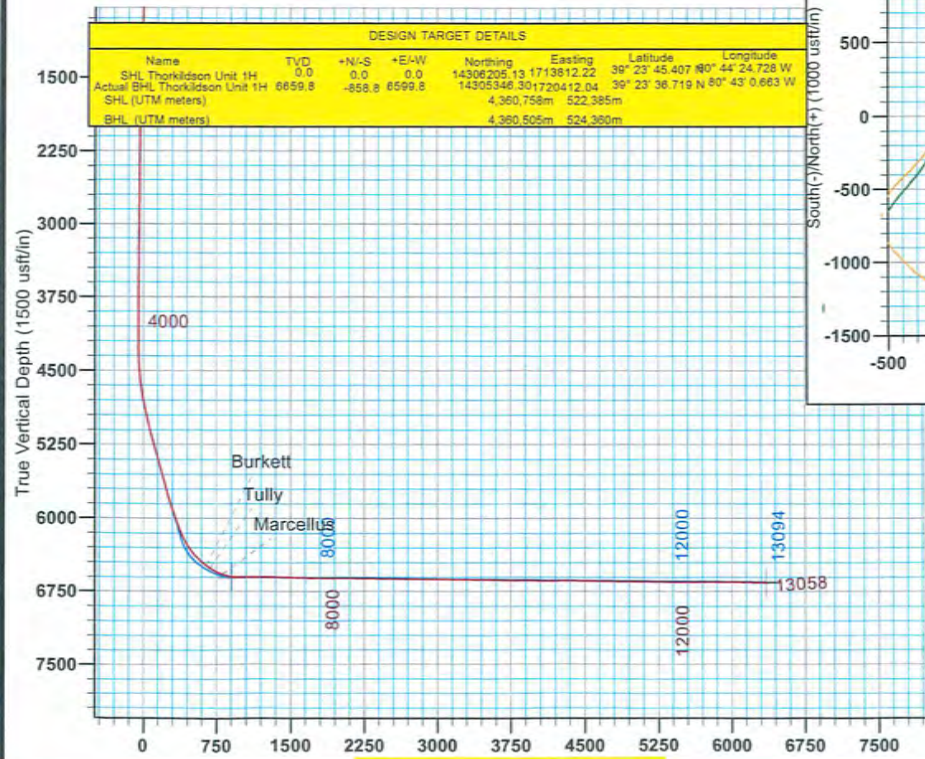
LEGEND

- Thorkildson Unit 1H, Original Wellpath, Plan 5 V0
- Ed Arnold Unit 1H, Original Wellpath, Original Wellpath V0
- Sweeney Unit 2H, Original Wellpath, Original Wellpath V0
- Ed Arnold Unit 2H, Original Wellpath, Original Wellpath V0
- Sweeney Unit 1H, Original Wellpath, Original Wellpath V0
- As Drilled



DESIGN TARGET DETAILS

Name	TVD	+N/-S	+E/-W	Northing	Easting	Latitude	Longitude
SHL Thorkildson Unit 1H	0.0	0.0	0.0	14306205.13	1713812.22	39° 23' 45.407 80° 44' 24.728 W	
Actual BHL Thorkildson Unit 1H	8659.8	-868.8	8599.8	14305346.30	1720412.04	39° 23' 38.719 N 80° 43' 0.663 W	
SHL (UTM meters)				4,360,756m	522,385m		
BHL (UTM meters)				4,360,505m	524,380m		



Vertical Section at 80.00° (1500 usft/in)



SITE DETAILS: Ed Arnold Pad
 Ed Arnold Pad McElroy District

Site Centre Northing: 14306188.32
 Easting: 1713823.50

Positional Uncertainty: 2.0
 Convergence: 0.16
 Local North: Grid

PROJECT DETAILS: Tyler County WV

Geodetic System: Universal Transverse Mercator (US Survey Feet)
 Datum: NAD 1927 (NADCON CONUS)
 Ellipsoid: Clarke 1866
 Zone: Zone 17N (84 W to 78 W)
 System Datum: Mean Sea Level

FORMATION TOP DETAILS
 No formation data is available

Genie Lightfoot 14:32, September 09 2013
 Scientific Drilling
 421 South Eagle Lane
 Oklahoma City, OK

