

References—Magnetic North

LATITUDE 39-27-30 N

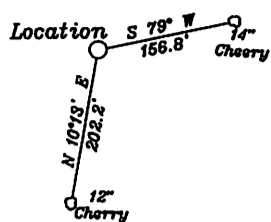
Bottom Hole 8,138'

Top Hole
 NAD 27-39.438679 N, 80.721030 W
 UTM NAD83(meters)-4365287.4 N. 524007.2 E
 State Plane NAD 27-344229.7 N, 1655148.2 E

Landing Point LPI
 NAD 27-39.438730 N, 80.722953 W
 UTM NAD83(meters)-4365292.5 N. 523841.7 E
 State Plane NAD 27-344256 N, 1654605 E

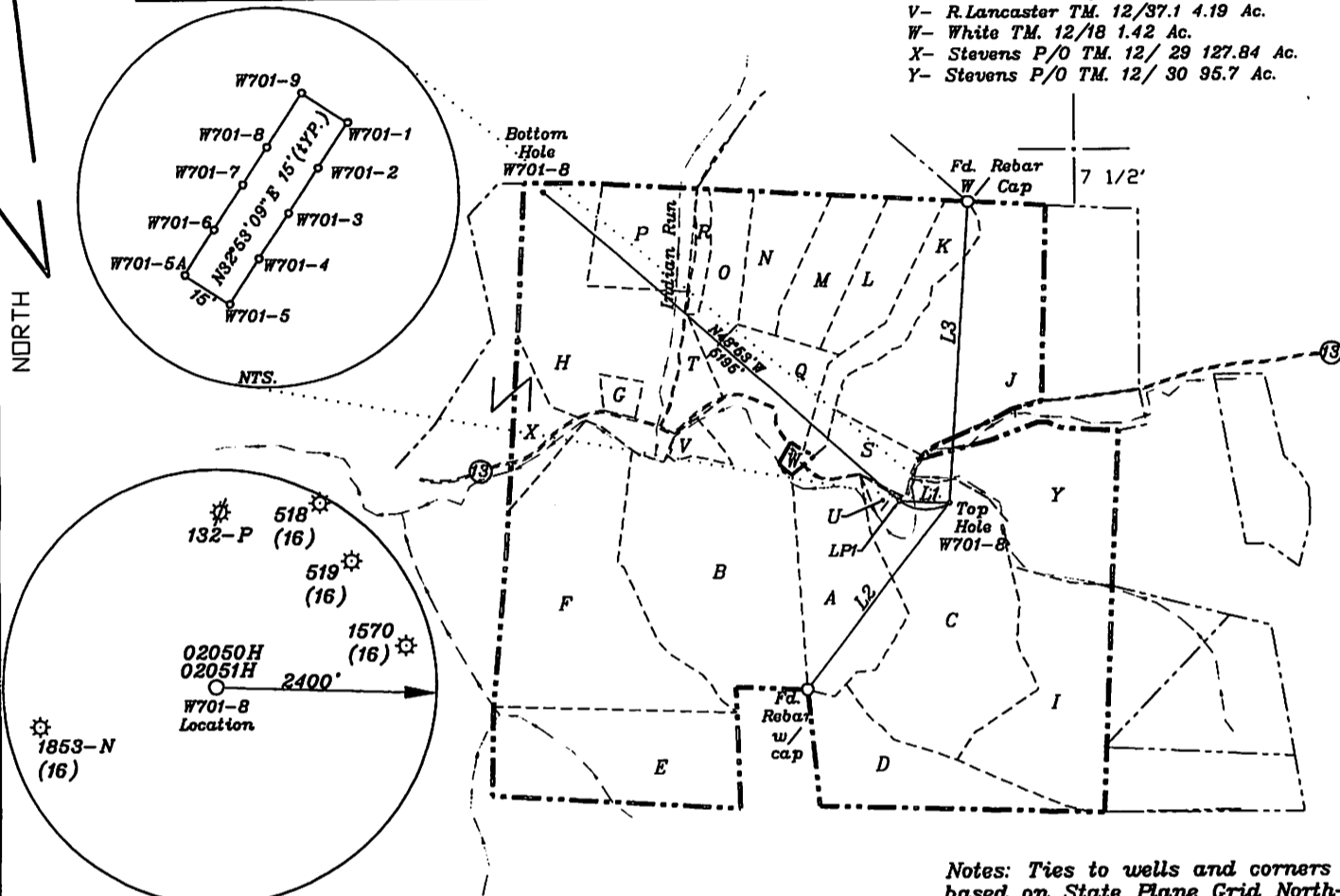
Bottom Hole
 NAD 27-39.447962 N, 80.736973 W
 UTM NAD83(meters)-4366313.4 N. 522632.2 E
 State Plane NAD 27-347672 N, 1650692 E

- A- Stevens TM. 12/35 45 Ac.
- B- Lancaster TM. 12/37 115.81 Ac.
- C- Stevens TM. 12/34 98.38 Ac.
- D- Walters TM. 12/33 50 Ac.
- E- Coastal Lumber Inc. TM. 12/39 97.57 Ac.
- F- Higginbotham TM. 12/38 111.09 Ac.
- G- B Doak TM. 12/10.1 3.812 Ac.
- H- Doak TM. 12/10 93.3 Ac.
- I- Stevens TM. 12/29 127.84 Ac.
- J- Rover TM. 12/20 80 Ac.
- K- White TM. 12/16 21.7 Ac.
- L- Walters TM. 12/15 20.5 Ac.
- M- Walters TM. 12/14.1 23.02 Ac.
- N- Walters TM. 12/14 23.4 Ac.
- O- Doak TM. 12/13 25.088 Ac.
- P- Braucher TM. 12/11 30 Ac.
- Q- Walters TM. 12/17 30.02 Ac.
- R- Braucher TM. 12/13.1 4.912 Ac.
- S- White TM. 12/19 14.75 Ac.
- T- D. Doak TM. 12/10.2 9.158 Ac.
- U- Walters TM. 12/34.1 1.64 Ac.
- V- R. Lancaster TM. 12/37.1 4.19 Ac.
- W- White TM. 12/18 1.42 Ac.
- X- Stevens P/O TM. 12/ 29 127.84 Ac.
- Y- Stevens P/O TM. 12/ 30 95.7 Ac.



NUMBER	DIRECTION	DISTANCE
L1	N87°16'W	543'
L2	N39°20'E	2571'
L3	S03°41'W	3307'

7 1/2'



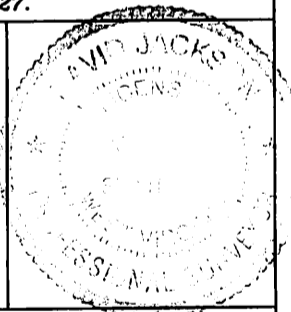
Notes: Ties to wells and corners are based on State Plane Grid North-WV North Zone NAD 27.

(+) DENOTES LOCATION OF WELL ON UNITED STATES TOPOGRAPHIC MAPS

FILE NO. _____
 DRAWING NO. 1
 SCALE 1" = 2000'
 MINIMUM DEGREE OF ACCURACY 1 in 200
 PROVEN SOURCE OF ELEVATION GPS
submeter unit

I THE UNDERSIGNED, HEREBY CERTIFY THAT THIS PLAT IS CORRECT TO THE BEST OF MY KNOWLEDGE AND BELIEF AND SHOWS ALL THE INFORMATION REQUIRED BY LAW AND THE RULES ISSUED AND PRESCRIBED BY THE DEPARTMENT OF ENVIRONMENTAL PROTECTION.

(SIGNED) [Signature]
 R.P.E. _____ P.L.S. 708



STATE OF WEST VIRGINIA
 Division of Environmental Protection
 OFFICE OF OIL AND GAS

DATE January 23, 2013
 OPERATOR'S WELL NO. W701-8
 API WELL NO. _____
 STATE 47 COUNTY 095 PERMIT 02082

WELL TYPE: OIL GAS LIQUID INJECTION WASTE DISPOSAL
 (IF 'GAS') PRODUCTION X STORAGE DEEP SHALLOW X
 LOCATION: ELEVATION 805' WATER SHED INDIAN CREEK
 DISTRICT McElroy COUNTY Tyler
 QUADRANGLE CENTER POINT 7 1/2'

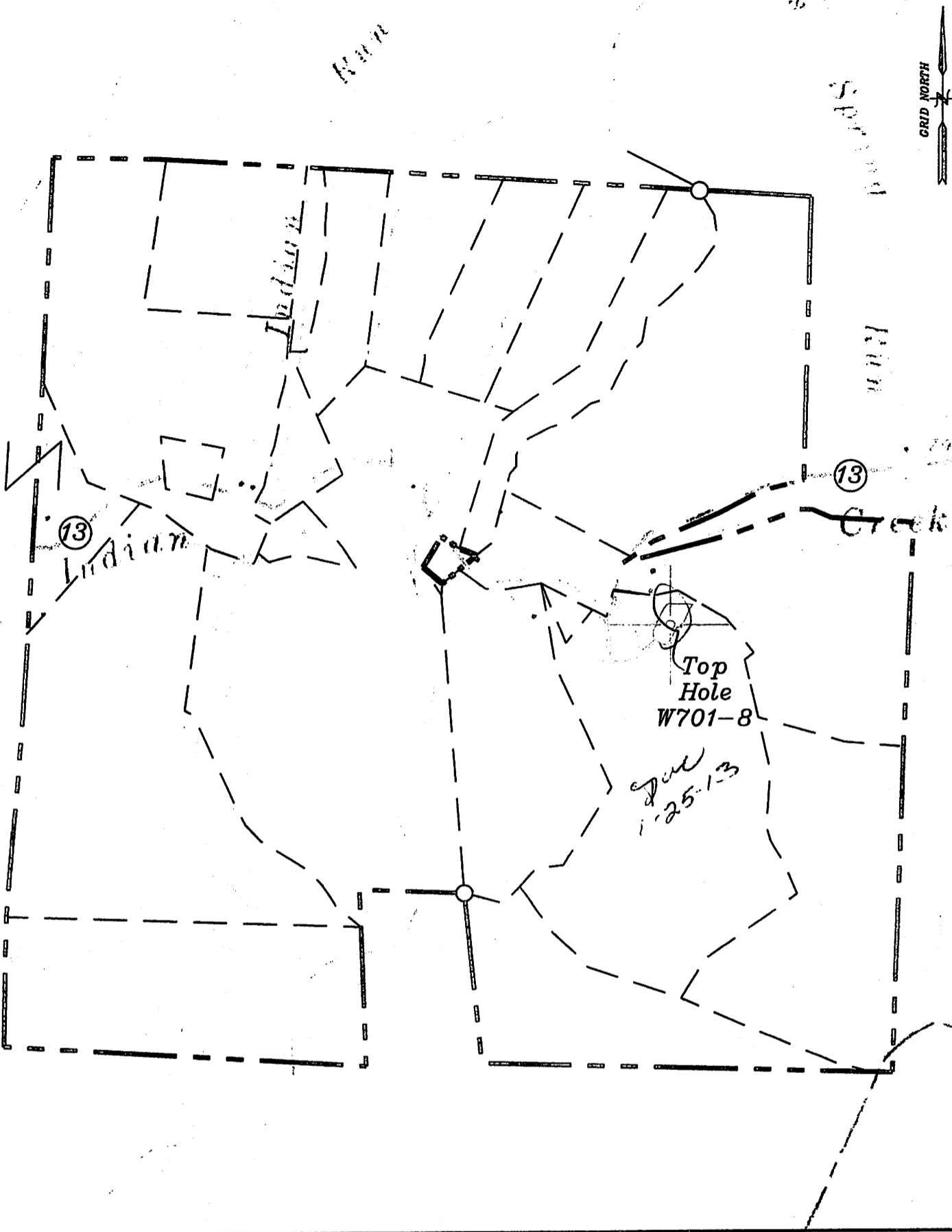
SURFACE OWNER PHYLLIS KAY STEVENS, ET AL ACREAGE 98.38 ac.
 OIL & GAS ROYALTY OWNER MARY WELCH - 127.84 AC.± & 45 AC.±, CHURCH OF CHRIST OF ALVY, WV - 120 AC., & ANNA B. CONGER, ET AL - 54.33 AC.

LEASE NO. W701 (TM 12/34), T3011c (TM.12/19), T3011 (TM. 12/16, TM. 12/17, TM. 12/13, TM. 12/13.1), Fort20A (TM. 12/10), T3011a (TM. 12/11)

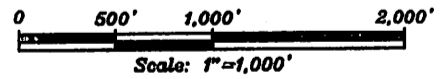
PROPOSED WORK: DRILL X CONVERT DRILL DEEPER REDRILL FRACTURE OR STIMULATE X PLUG OFF OLD FORMATION PERFORATE NEW FORMATION X OTHER PHYSICAL CHANGE IN WELL (SPECIFY) _____

PLUG AND ABANDON CLEAN OUT AND REPLUG
 TARGET FORMATION Marcellus ESTIMATED DEPTH TVD = 7250' + horizontal leg; TMD = 13,500'
 WELL OPERATOR Jay Bee Oil & Gas, Inc. DESIGNATED AGENT Randy Broda
 ADDRESS 1720 Rt. 22, East Union, NJ 07083 ADDRESS Route 1, Box 5, Cairo, WV 26337

LONGITUDE 80-42-30 N Bottom Hole 3,682' Top Hole 7,109'



Well: W701-8
 Quad: Center Point 7 1/2'
 District: McElroy
 County: Tyler



95-02082 H6A MOD
 JAY-BEE OIL & GAS

W701-7

Farm Name: Phyllis K. Stevens, et al