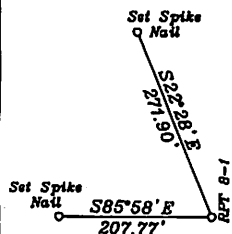
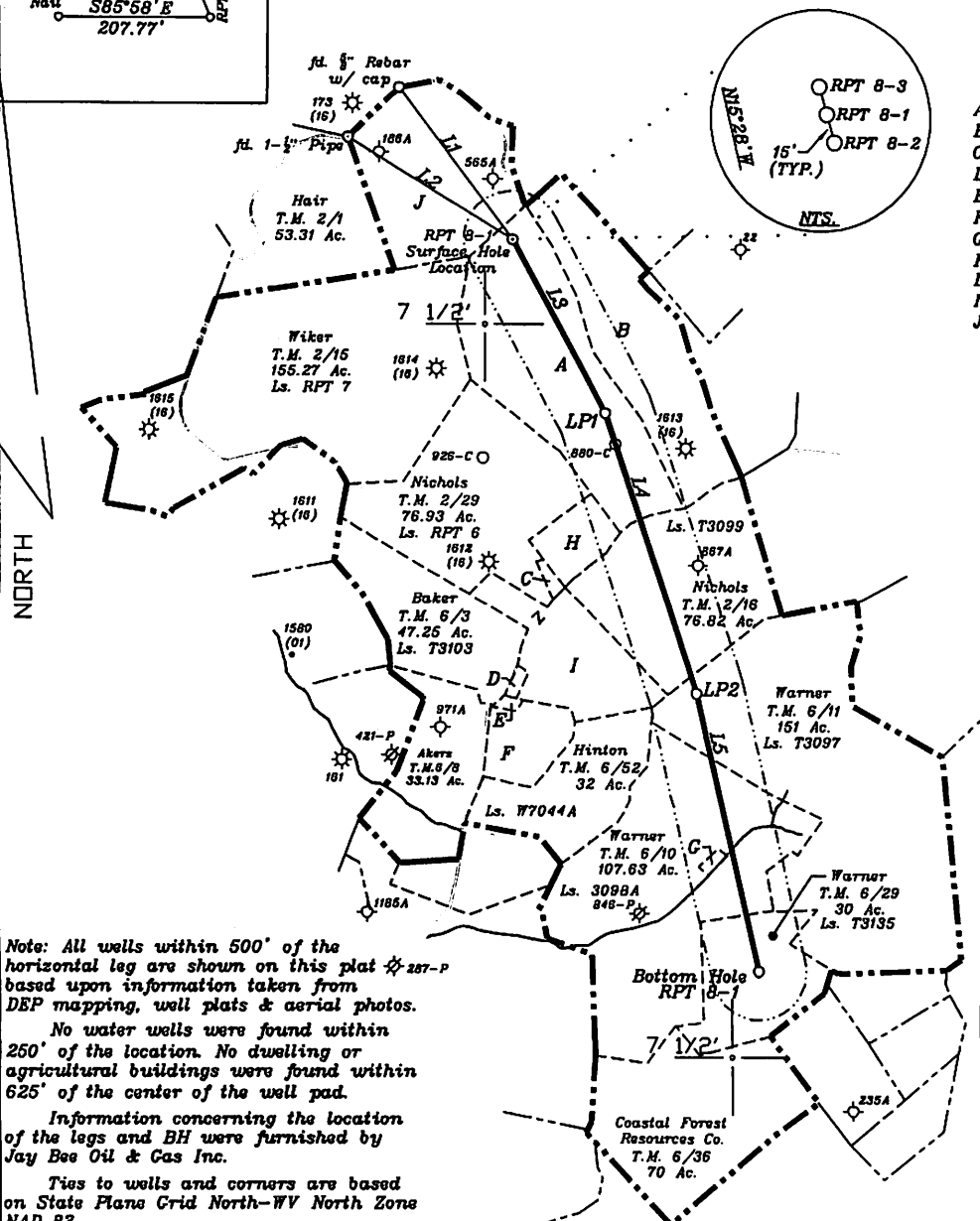


References



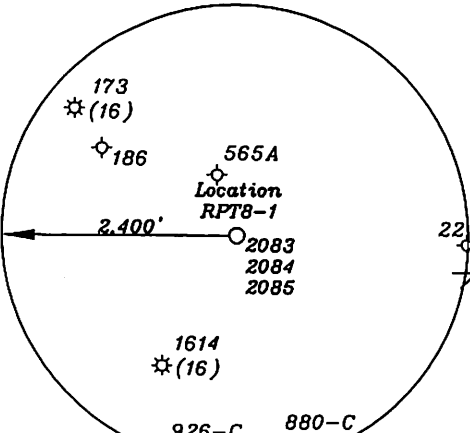
<b>Surface Hole Location</b> UTM NAD 83(Meters)-4370417.4 N, 518394.8 E Geo. NAD 83-39.483159 N, 80.786106 W State Plane NAD 83-360692.3 N, 1605511.6 E	<b>Landing Point 2</b> UTM NAD 83(Meters)-4368990.2 N, 519003.9 E Geo. NAD 83-39.470287 N, 80.779065 W State Plane NAD 83-355975.8 N, 1607432.0 E
<b>Landing Point 1</b> UTM NAD 83(Meters)-4369869.3 N, 518696.2 E Geo. NAD 83-39.478214 N, 80.782617 W State Plane NAD 83-358877.2 N, 1606470.7 E	<b>Bottom Hole Location</b> UTM NAD 83(Meters)-4368112.8 N, 519216.2 E Geo. NAD 83-39.462376 N, 80.776621 W State Plane NAD 83-353085.0 N, 1608080.8 E



- A-Hair T.M. 2/17 85 Ac.
- B-Sherwood T.M. 2/18 62.5 Ac.
- C-Nichols T.M. 6/4 1.25 Ac.
- D-Cole T.M. 6/5 1 Ac. Ls. T3100A1
- E-Hostuttler T.M. 6/6 0.38 Ac.
- F-Catrell T.M. 6/7 14.62 Ac. Ls. T3101
- G-Warner T.M. 6/10.1 0.368 Ac.
- H-D. Nichols et al T.M. 2/19 12.5 Ac. Ls. T3099A
- I-Liller T.M. 6/3.1 15 Ac. Ls. T3180
- J-Hair T.M. 2/2 53.75 Ac.

NUMBER	DIRECTION	DISTANCE
L1	S31°21' E	1,917'
L2	S68°27' E	1,999'
L3	S27°51' E	2,053'
L4	S18°20' E	3,056'
L5	S12°39' E	2,963'

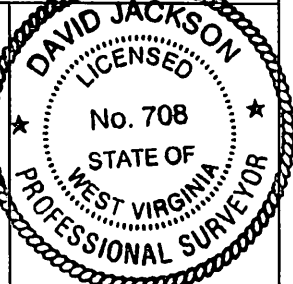
Note: All wells within 500' of the horizontal leg are shown on this plat based upon information taken from DEP mapping, well plats & aerial photos.  
No water wells were found within 250' of the location. No dwelling or agricultural buildings were found within 625' of the center of the well pad.  
Information concerning the location of the legs and BH were furnished by Jay Bee Oil & Gas Inc.  
Ties to wells and corners are based on State Plane Grid North-WV North Zone NAD 83.



(+) DENOTES LOCATION OF WELL ON UNITED STATES TOPOGRAPHIC MAPS

FILE NO. \_\_\_\_\_  
DRAWING NO. 1  
SCALE 1" = 2000'  
MINIMUM DEGREE OF ACCURACY 1 in 200  
PROVEN SOURCE OF ELEVATION GPS  
submeter unit

I THE UNDERSIGNED, HEREBY CERTIFY THAT THIS PLAT IS CORRECT TO THE BEST OF MY KNOWLEDGE AND BELIEF AND SHOWS ALL THE INFORMATION REQUIRED BY LAW AND THE RULES ISSUED AND PRESCRIBED BY THE DEPARTMENT OF ENVIRONMENTAL PROTECTION.  
(SIGNED) David J Jackson  
R.P.E. \_\_\_\_\_ L.L.S. 708



STATE OF WEST VIRGINIA  
Division of Environmental Protection  
OFFICE OF OIL AND GAS

DATE April 21, 2015  
OPERATOR'S WELL NO. RPT 8-1  
API WELL NO. \_\_\_\_\_

WELL TYPE: OIL X GAS X LIQUID INJECTION \_\_\_\_\_ WASTE DISPOSAL \_\_\_\_\_  
(IF 'GAS') PRODUCTION X STORAGE \_\_\_\_\_ DEEP \_\_\_\_\_ SHALLOW X

LOCATION: ELEVATION 1,244.5' WATER SHED Big Run  
DISTRICT McElroy COUNTY Tyler  
QUADRANGLE Shirley 7 1/2'

SURFACE OWNER Jack Hair et al ACREAGE 85 ac  
OIL & GAS ROYALTY OWNER Jack Hair(85 Ac.), Duane Nichols(76.82 Ac.), Harold T. Warner(151 Ac.), Richard Warner(107.83Ac.) & (30 Ac.)

LEASE NO. RPT 8, T3099, T3097, T3098A & T3135

PROPOSED WORK: DRILL X CONVERT \_\_\_\_\_ DRILL DEEPER \_\_\_\_\_ REDRILL \_\_\_\_\_ FRACTURE OR STIMULATE X PLUG OFF OLD FORMATION \_\_\_\_\_ PERFORATE NEW FORMATION X OTHER PHYSICAL CHANGE IN WELL (SPECIFY) \_\_\_\_\_

PLUG AND ABANDON \_\_\_\_\_ CLEAN OUT AND REPLUG \_\_\_\_\_  
TARGET FORMATION Marcellus ESTIMATED DEPTH 7,500'+ Horizontal leg  
WELL OPERATOR Jay Bee Oil & Gas, Inc. DESIGNATED AGENT Randy Broda  
ADDRESS 1720 Rt. 22 East Union, NJ 07083 ADDRESS Rt. 1 Box 5 Cairo, WV 26337

06/12/2015

LONGITUDE 80-45-00 W BH

LONGITUDE 80-47-00 W TH

Top Hole 6,018'

Bottom Hole 13,624'