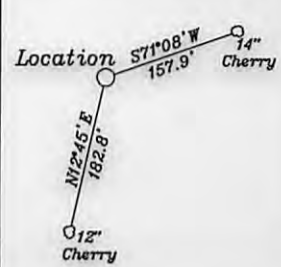


References-Magnetic North



**Top Hole**  
 NAD 27-39.438622 N, 80.721014 W  
 UTM NAD83(meters)-4365499.1 N, 524023.2 E  
 State Plane NAD 27-344209.0 N, 1655152.6 E

**LPI-Landing Point 1**  
 NAD 27-39.436996 N, 80.720011 W  
 UTM NAD83(meters)-4365318.8 N, 524110.0 E  
 State Plane NAD 27-343613 N, 1655428 E

**Bottom Hole**  
 NAD 27-39.430071 N, 80.707892 W  
 UTM NAD83(meters)-4364553.7 N, 525155.5 E  
 State Plane NAD 27-341044 N, 1658816 E

- A- Stevens TM. 12/35 45 Ac.
- B- Lancaster TM. 12/37 115.81 Ac.
- C- Stevens TM. 12/34 98.38 Ac.
- D- Walters TM. 12/33 50 Ac.
- E- Coastal Lumber Inc. TM. 12/39 97.57 Ac.
- F- Higginbotham TM. 12/38 111.09 Ac.
- G- B Doak TM. 12/10.1 3.812 Ac.
- H- Doak TM. 12/10 93.3 Ac.
- I- Stevens p/o TM. 12/29 127.84 Ac.
- J- Rover TM. 12/20 80 Ac.
- K- White TM. 12/16 21.7 Ac.
- L- Walters TM. 12/15 20.5 Ac.
- M- Walters TM. 12/14.1 23.02 Ac.
- N- Walters TM. 12/14 23.4 Ac.
- O- Doak TM. 12/13 25.088 Ac.
- P- Braucher TM. 12/11 30 Ac.
- Q- Walters TM. 12/17 30.02 Ac.
- R- Braucher TM. 12/13.1 4.912 Ac.
- S- White TM. 12/19 14.75 Ac.
- T- D. Doak TM. 12/10.2 9.158 Ac.
- U- Walters TM. 12/34.1 1.64 Ac.
- V- R.Lancaster TM. 12/37.1 4.19 Ac.
- W- White TM. 12/18 1.42 Ac.
- X- Robinson p/o TM. 12/9 63.51 Ac.
- Y - Stevens p/o TM 12/30 95.7 Ac.

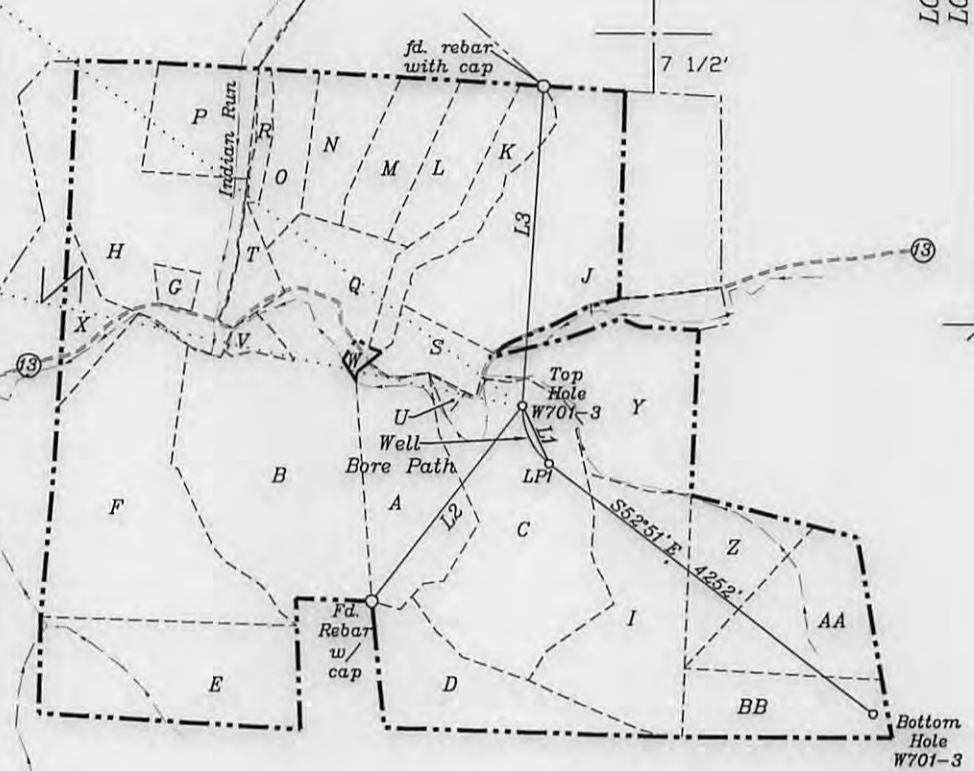
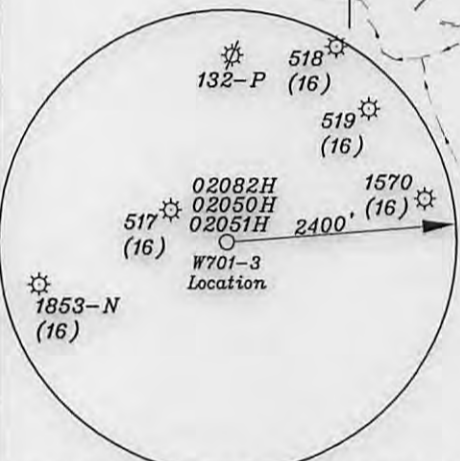
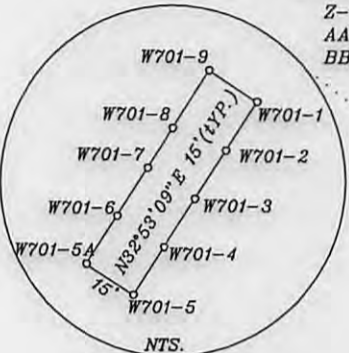
NUMBER	DIRECTION	DISTANCE
L1	S24°46' E	657'
L2	N37°41' E	2557'
L3	S3°35' W	3328'

- Z- Stevens p/o TM. 12/29 127.84 Ac.
- AA- Ferrebee p/o TM. 12/28 34.19 Ac.
- BB- Ferrebee p/o TM. 12/28 43.01 Ac.

LONGITUDE 80-40-00 N (BH)  
 LONGITUDE 80-42-30 N (TH)  
 Bottom Hole 10,139'

Top Hole 7,130'

NORTH



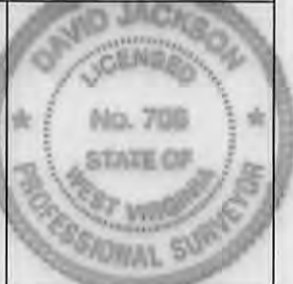
Notes: Ties to wells and corners are based on State Plane Grid North-WV North Zone NAD 27.

(+) DENOTES LOCATION OF WELL ON UNITED STATES TOPOGRAPHIC MAPS

FILE NO. \_\_\_\_\_  
 DRAWING NO. 1  
 SCALE 1" = 2000'  
 MINIMUM DEGREE OF ACCURACY 1 in 200  
 PROVEN SOURCE OF ELEVATION GPS  
submeter unit

I, THE UNDERSIGNED, HEREBY CERTIFY THAT THIS PLAT IS CORRECT TO THE BEST OF MY KNOWLEDGE AND BELIEF AND SHOWS ALL THE INFORMATION REQUIRED BY LAW AND THE RULES ISSUED AND PRESCRIBED BY THE DEPARTMENT OF ENVIRONMENTAL PROTECTION.

(SIGNED) David L Jackson  
 R.P.E. \_\_\_\_\_ P.L.S. 708



STATE OF WEST VIRGINIA  
 Division of Environmental Protection  
 OFFICE OF OIL AND GAS

DATE June 20, 2013  
 OPERATOR'S WELL NO. W701-3  
 API WELL NO. \_\_\_\_\_

WELL TYPE: OIL GAS LIQUID INJECTION WASTE DISPOSAL 47 095 2105 HGA  
 (IF 'GAS') PRODUCTION STORAGE DEEP SHALLOW STATE COUNTY PERMIT

LOCATION: ELEVATION 805' WATER SHED Indian Creek

DISTRICT McElroy COUNTY Tyler  
 QUADRANGLE Center Point 7 1/2'

SURFACE OWNER Phyllis Kay Stevens. et al ACREAGE 98.38 ac.  
 OIL & GAS ROYALTY OWNER Mary Welch 98.38 Ac. & 127.84 Ac.±, Harold & Calantha Yost 34.19 Ac.±, 43.01 Ac. ±

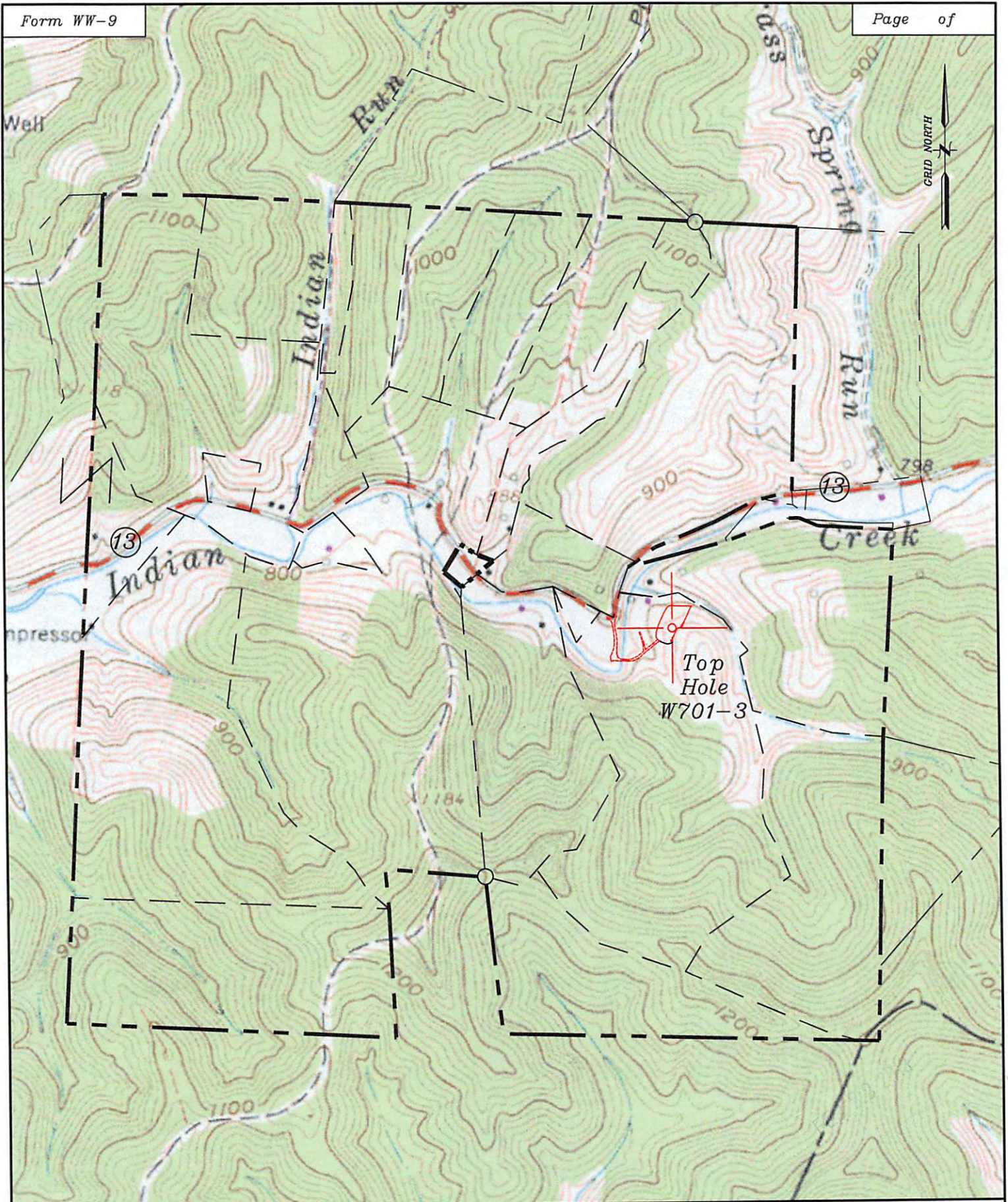
LEASE NO. W701P3 (TM. 12/34), W701 (TM. 12/29 Tract 1), T3007C2 (TM. 12/29 Tract 2), T3007C1 (TM. 2/28 Tract AA), T3007B (TM.12/28 Tract BB)

PROPOSED WORK: DRILL CONVERT DRILL DEEPER REDRILL FRACTURE OR STIMULATE PLUG OFF OLD FORMATION PERFORATE NEW FORMATION OTHER PHYSICAL CHANGE IN WELL (SPECIFY)

PLUG AND ABANDON CLEAN OUT AND REPLUG

TARGET FORMATION Marcellus ESTIMATED DEPTH TVD = 7250'± Horizontal Leg; TMD = 13500

WELL OPERATOR Jay Bee Oil & Gas, Inc. DESIGNATED AGENT Randy Broda  
 ADDRESS 1720 Rt. 22, East Union, NJ 07083 ADDRESS Route 1, Box 5, Cairo, WV 26337



Well: W701-3  
Quad: Center Point 7 1/2'  
District: McElroy  
County: Tyler

