



---

**west virginia** department of environmental protection

---

Office of Oil and Gas  
601 57th Street SE  
Charleston, WV 25304  
(304) 926-0450  
(304) 926-0452 fax

Earl Ray Tomblin, Governor  
Randy C. Huffman, Cabinet Secretary  
[www.dep.wv.gov](http://www.dep.wv.gov)

July 18, 2016

**FINAL INSPECTION REPORT**

**Well Permit Cancelled**

JAY-BEE OIL & GAS,

The FINAL INSPECTION REPORT for the CANCELLED permit, API Well Number: 47-9502105, issued to JAY-BEE OIL & GAS, and listed below has been received in this office. The permit has been cancelled as of 7/18/2016.



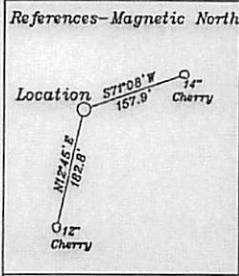
James Martin  
Chief

Operator: JAY-BEE OIL & GAS  
Operator's Well No: W701-3 / KETEL THREE  
Farm Name: PHYLLIS KAY STEVENS. ET AL  
**API Well Number: 47-9502105**  
Date Issued: 07/25/2013

Date Cancelled: 07/18/2016

**Promoting a healthy environment.**

**07/22/2016**



Bottom Hole 11,778'  
 LATITUDE 39-27-30 N

**Top Hole**  
 NAD 27-39.438622 N, 80.721014 W  
 UTM NAD83(meters)-4365499.1 N, 524023.2 E  
 State Plane NAD 27-344209.0 N, 1655152.6 E

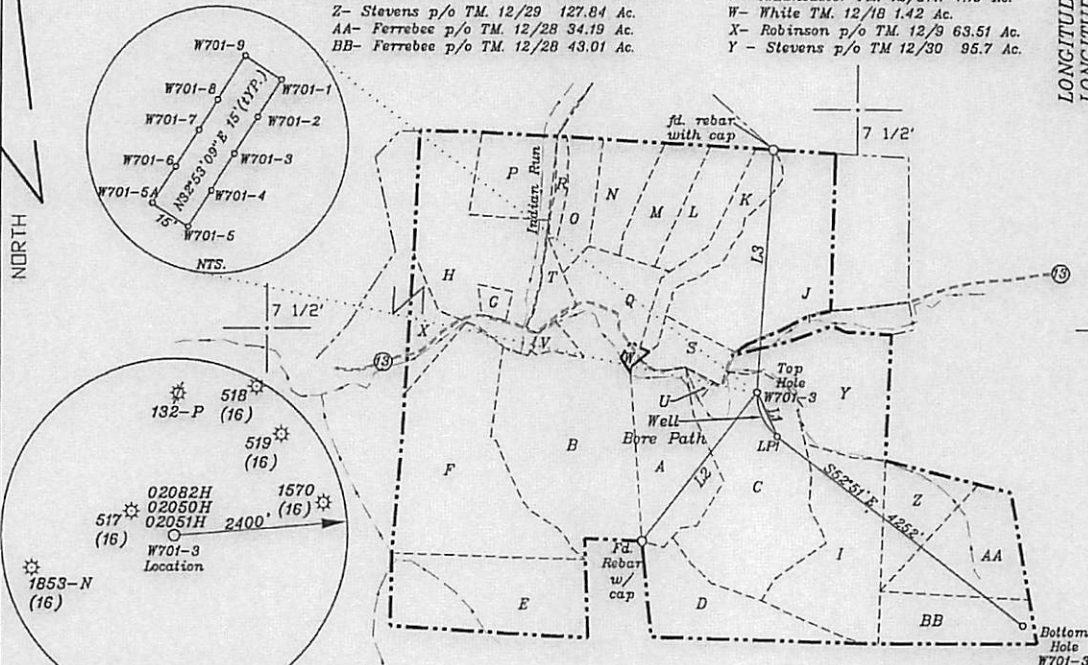
**LPI-Landing Point 1**  
 NAD 27-39.436996 N, 80.720011 W  
 UTM NAD83(meters)-4365318.8 N, 524110.0 E  
 State Plane NAD 27-343613 N, 1655428 E

**Bottom Hole**  
 NAD 27-39.430071 N, 80.707892 W  
 UTM NAD83(meters)-4364553.7 N, 525155.5 E  
 State Plane NAD 27-341044 N, 1658816 E

- A- Stevens TM. 12/35 45 Ac.
- B- Lancaster TM. 12/37 115.81 Ac.
- C- Stevens TM. 12/34 98.38 Ac.
- D- Walters TM. 12/33 50 Ac.
- E- Coastal Lumber Inc. TM. 12/39 97.57 Ac.
- F- Higginbotham TM. 12/38 111.09 Ac.
- G- B Doak TM. 12/10.1 3.812 Ac.
- H- Doak TM. 12/10 83.3 Ac.
- I- Stevens p/o TM. 12/29 127.84 Ac.
- J- Rover TM. 12/20 80 Ac.
- K- White TM. 12/16 21.7 Ac.
- L- Walters TM. 12/15 20.5 Ac.
- M- Walters TM. 12/14.1 23.02 Ac.
- N- Walters TM. 12/14 23.4 Ac.
- O- Doak TM. 12/13 25.088 Ac.
- P- Braucher TM. 12/11 30 Ac.
- Q- Walters TM. 12/17 30.02 Ac.
- R- Braucher TM. 12/13.1 4.912 Ac.
- S- White TM. 12/19 14.75 Ac.
- T- D. Doak TM. 12/10.2 9.158 Ac.
- U- Walters TM. 12/34.1 1.64 Ac.
- V- R.Lancaster TM. 12/37.1 4.19 Ac.
- W- White TM. 12/18 1.42 Ac.
- X- Robinson p/o TM. 12/9 63.51 Ac.
- Y - Stevens p/o TM 12/30 95.7 Ac.

NUMBER	DIRECTION	DISTANCE
L1	S24°46'E	657'
L2	N37°41'E	2557'
L3	S3°35'W	3328'

- Z- Stevens p/o TM. 12/29 127.84 Ac.
- AA- Ferrebee p/o TM. 12/28 34.19 Ac.
- BB- Ferrebee p/o TM. 12/28 43.01 Ac.



LONGITUDE 80-40-00 N (BH)  
 LONGITUDE 80-42-30 N (TH)  
 Bottom Hole 10,139'  
 Top Hole 7,130'

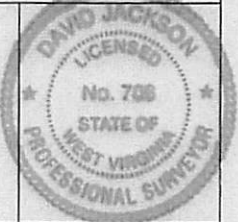
(+) DENOTES LOCATION OF WELL ON UNITED STATES TOPOGRAPHIC MAPS

Notes: Ties to wells and corners are based on State Plane Grid North-WV North Zone NAD 27.

FILE NO. \_\_\_\_\_  
 DRAWING NO. 1  
 SCALE 1" = 2000'  
 MINIMUM DEGREE OF ACCURACY 1 in 200  
 PROVEN SOURCE OF ELEVATION GPS  
submeter unit

I, THE UNDERSIGNED, HEREBY CERTIFY THAT THIS PLAT IS CORRECT TO THE BEST OF MY KNOWLEDGE AND BELIEF AND SHOWS ALL THE INFORMATION REQUIRED BY LAW AND THE RULES ISSUED AND PRESCRIBED BY THE DEPARTMENT OF ENVIRONMENTAL PROTECTION.

(SIGNED) David Z Jackson  
 R.P.E. \_\_\_\_\_ P.L.S. 708



STATE OF WEST VIRGINIA  
 Division of Environmental Protection  
 OFFICE OF OIL AND GAS

DATE June 20, 2013  
 OPERATOR'S WELL NO. W701-3  
 API WELL NO. \_\_\_\_\_

WELL TYPE: OIL GAS LIQUID INJECTION WASTE DISPOSAL 47 095 2105 HGA  
 (IF 'GAS') PRODUCTION X STORAGE DEEP SHALLOW X STATE COUNTY PERMIT

LOCATION: ELEVATION 805' WATER SHED Indian Creek **CANCELLED**  
 DISTRICT McElroy COUNTY Tyler  
 QUADRANGLE Center Point 7 1/2'

SURFACE OWNER Phyllis Kay Stevens, et al ACREAGE 98.38 ac.  
 OIL & GAS ROYALTY OWNER Mary Welch 98.38 Ac. & 127.84 Ac.±, Harold & Calantha Yost 34.19 Ac.±, 43.01 Ac. ±

LEASE NO. W701P3 (TM. 12/34), W701 (TM. 12/29 Tract 1), T3007C2 (TM. 12/29 Tract Z), T3007C1 (TM. 2/28 Tract AA), T3007B (TM.12/28 Tract BB)

PROPOSED WORK: DRILL X CONVERT DRILL DEEPER REDRILL FRACTURE OR STIMULATE X PLUG OFF OLD FORMATION PERFORATE NEW FORMATION X OTHER PHYSICAL CHANGE IN WELL (SPECIFY) \_\_\_\_\_

PLUG AND ABANDON CLEAN OUT AND REPLUG  
 TARGET FORMATION Marcellus ESTIMATED DEPTH TVD = 7250'± Horizontal Leg; TMD = 13500  
 WELL OPERATOR Jay Bee Oil & Gas, Inc. DESIGNATED AGENT Randy Broda  
 ADDRESS 1720 Rt. 22, East Union, NJ 07083 ADDRESS Route 1, Box 5, Cairo, WV 26337

CANCELLED

07/22/2016