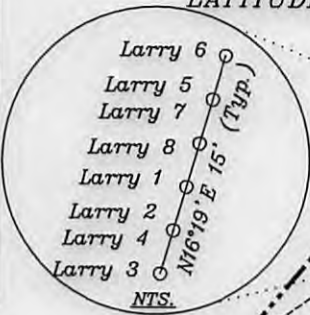
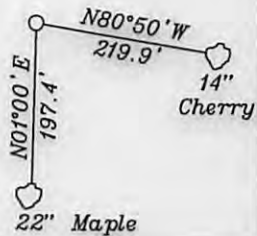


Top Hole 1,810'

LATITUDE 39-30-00 N (TH)  
LATITUDE 39-27-30 N (BH)

Bottom Hole 647'

References-Magnetic North  
Location  
Larry 4

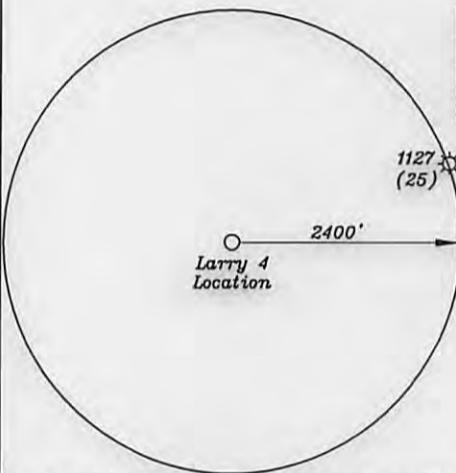


- A-Sulser TM. 20-110 4.412 Ac.
- B-Boggs TM. 26-46.18 4.323 Ac.
- C-Boggs TM. 26-46.17 4.114 Ac.
- D-Johnson TM. 26-46.23 3.598 Ac.
- E-Johnson TM. 26-46.22 2.92 Ac.
- F-Holliday TM. 26-46.13 5.94 Ac.
- G-Holliday TM. 26-46.12 3.238 Ac.
- H-Gibson TM. 26-46.3 5.4 Ac.
- I-Patera TM. 26-46.7 7.32 Ac.
- J-Ridgetop Capital LP & Ridgetop Capital II LP TM. 26-46.14 8.693 Ac.
- K-Pittman TM. 26-46.2 5.135 Ac.
- L-Johnson TM. 26-46.9 5 Ac.
- M-Patera TM. 26-46.6 1.702 Ac.
- N-Patera TM. 26-46.15 3.722 Ac.
- O-Ridgetop Capital LP & Ridgetop Capital II LP TM. 26-46.16 5.094 Ac.
- P-Shrader TM. 26-46.1 5.58 Ac.
- Q-Peek TM. 26-46.8 2.079 Ac.
- R-Peek TM. 26-46.20 0.652 Ac.
- S-Peek TM. 26-46.19 4.59 Ac.
- T-Ison TM. 26-46.10 4.98 Ac.
- U-White TM. 26-46.5 13.14 Ac.
- V-Woodard TM. 26-46.4 8.1 Ac.
- W-Walton TM. 26-46.11 6.43 Ac.
- X-Jay Bee Oil & Gas TM. 26-46.24 3.059 Ac.
- Y-Jay Bee Oil & Gas TM. 26-19.9 1.496 Ac.
- Z-Peek TM. 26-46.21 0.22 Ac.
- DI-Dept. of Natural Res. TM. 27-3 0.44 Ac

| NUMBER | DIRECTION | DISTANCE |
|--------|-----------|----------|
| L1     | S55°02'W  | 1150'    |
| L2     | N70°06'E  | 970'     |
| L3     | N17°02'E  | 2493'    |

Notes: Ties to wells and corners are based on State Plane Grid North-WV North Zone NAD 27.

|                                             |
|---------------------------------------------|
| <b>Top Hole</b>                             |
| NAD 27- 39.475055 N, 80.880920 W            |
| NAD 83 (Meters)- 4369511.6 N, 510256.8 E    |
| State Plane NAD 27- 358130.9 N. 1610198.1 E |
| <b>Landing Point</b>                        |
| NAD 27- 39.473205 N, 80.884222 W            |
| NAD 83 (Meters)- 4369305.9 N, 509973.0 E    |
| State Plane NAD 27- 357472 N. 1609256 E     |
| <b>Bottom Hole</b>                          |
| NAD 27- 39.455868 N, 80.877244 W            |
| NAD 83 (Meters)- 4367382.6 N, 510575.9 E    |
| State Plane NAD 27- 351127 N. 1611129 E     |



(+) DENOTES LOCATION OF WELL ON UNITED STATES TOPOGRAPHIC MAPS

FILE NO. \_\_\_\_\_  
DRAWING NO. 1  
SCALE 1" = 2000'  
MINIMUM DEGREE OF ACCURACY 1 in 200  
PROVEN SOURCE OF ELEVATION GPS  
\_\_\_\_\_ submeter unit

I THE UNDERSIGNED, HEREBY CERTIFY THAT THIS PLAT IS CORRECT TO THE BEST OF MY KNOWLEDGE AND BELIEF AND SHOWS ALL THE INFORMATION REQUIRED BY LAW AND THE REGULATIONS ISSUED AND PRESCRIBED BY THE DEPARTMENT OF ENVIRONMENTAL PROTECTION.

(SIGNED) David Jackson  
R.P.E. \_\_\_\_\_ L.L.S. 708



STATE OF WEST VIRGINIA  
Division of Environmental Protection  
OFFICE OF OIL AND GAS

DATE May 30, 2013  
OPERATOR'S WELL NO. Larry 4  
API WELL NO. \_\_\_\_\_

WELL TYPE: OIL GAS LIQUID INJECTION X WASTE DISPOSAL \_\_\_\_\_  
(IF 'GAS') PRODUCTION X STORAGE \_\_\_\_\_ DEEP \_\_\_\_\_ SHALLOW X

LOCATION: ELEVATION 739.4' WATER SHED Middle Island Creek  
DISTRICT Ellsworth COUNTY Tyler  
QUADRANGLE Middlebourne 7 1/2'

SURFACE OWNER Ridgetop Capital LP and Ridgetop Capital II, LP ACREAGE 286.03 ac.  
OIL & GAS ROYALTY OWNER Ridgetop Capital LP and Ridgetop Capital II, LP LEASE ACREAGE 286.03 ac.  
LEASE NO. RT2

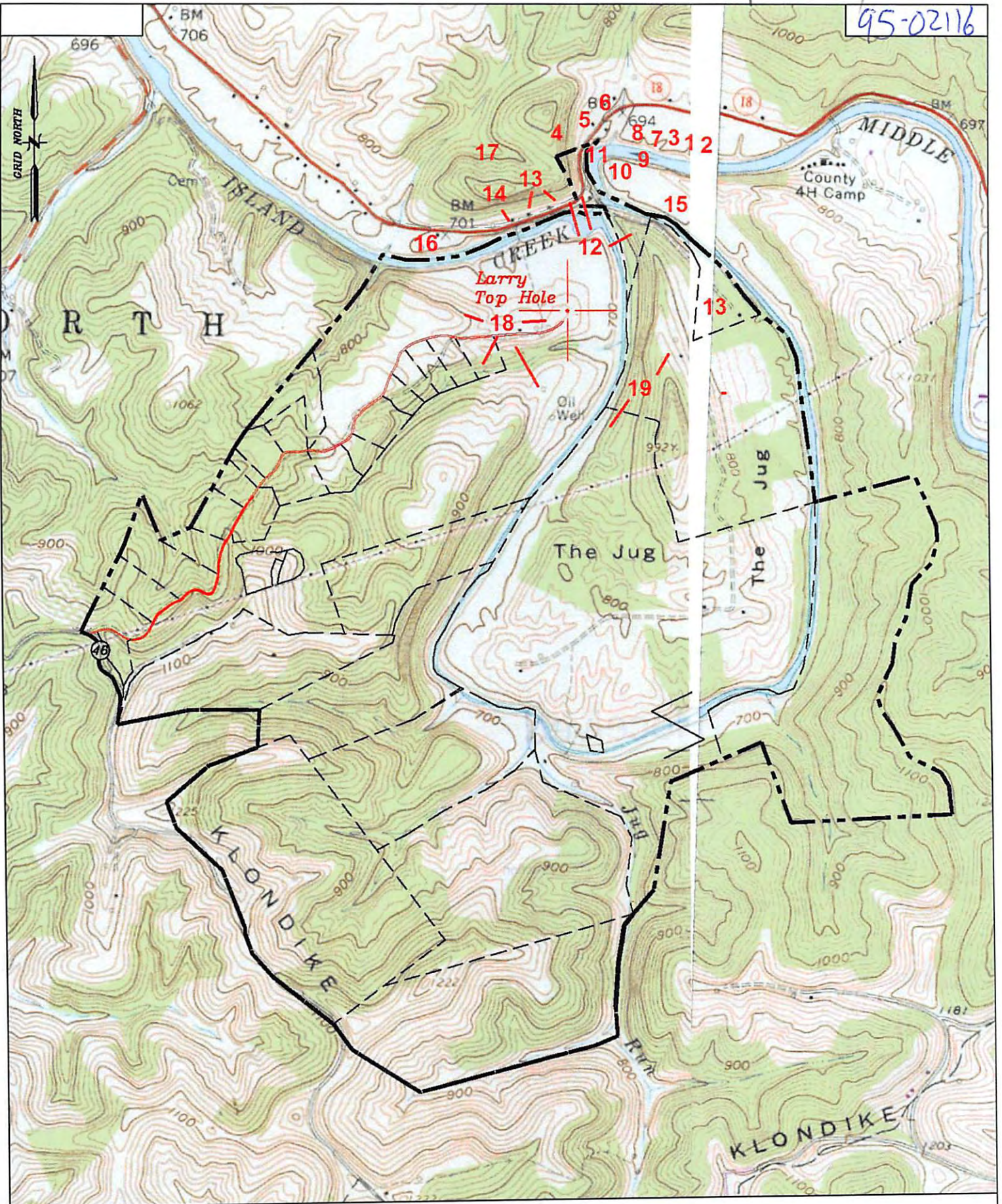
PROPOSED WORK: DRILL X CONVERT \_\_\_\_\_ DRILL DEEPER \_\_\_\_\_ REDRILL \_\_\_\_\_ FRACTURE OR STIMULATE \_\_\_\_\_ PLUG OFF OLD FORMATION \_\_\_\_\_ PERFORATE NEW FORMATION X OTHER PHYSICAL CHANGE IN WELL (SPECIFY) \_\_\_\_\_

PLUG AND ABANDON \_\_\_\_\_ CLEAN OUT AND REPLUG \_\_\_\_\_  
TARGET FORMATION Marcellus ESTIMATED DEPTH 16,500'+ Horizontal leg  
WELL OPERATOR Jay-Bee Oil & Gas, Inc. DESIGNATED AGENT Randy Broda  
ADDRESS 1720 Route 22 E, Union, NJ 07083 ADDRESS 3570 Shields Hill Rd., Cairo, WV 26337

09/13/2013

plat spotted

95-02116



Well: Larry 3  
 Quad: Middlebourne 7 1/2'  
 District: Ellsworth  
 County: Tyler

