

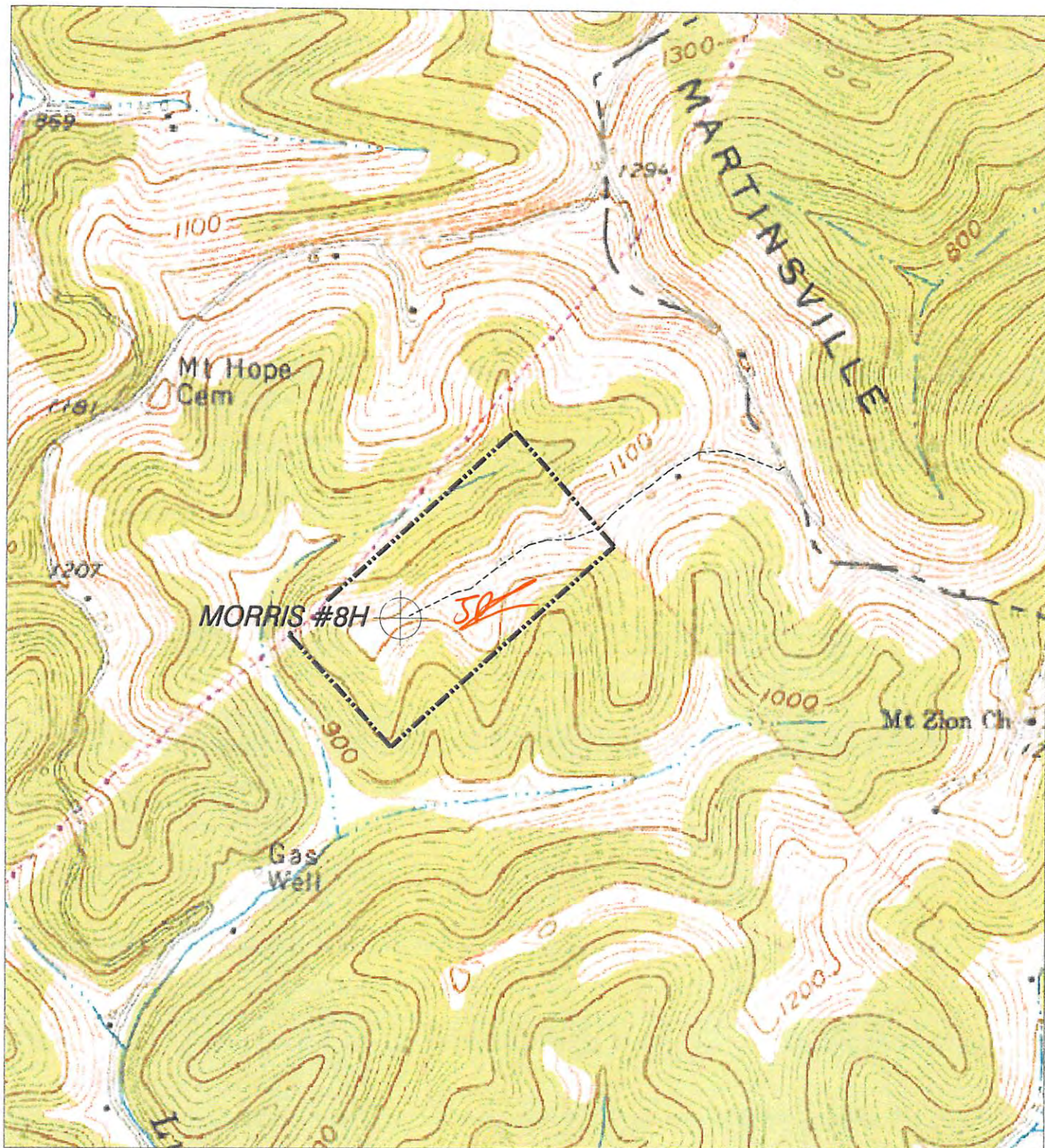
plat spotted ✓

Stone Energy Corporation Morris #8H

Form W-9

Page 1 of 1

95-0002122



NORTH

HUPP Surveying & Mapping

P.O. BOX 647 GRANTSVILLE, WV 26147
PH: (304) 354-7035 E-MAIL: hupp@frontiernet.net

1" = 1000'
Porters Falls 7.5'

Stone Energy Corp.
P.O. Box 52807
Lafayette, LA 70508