

Topo Quad: Porters Falls 7.5'

Scale: 1" = 2000' 4709502122

County: Tyler

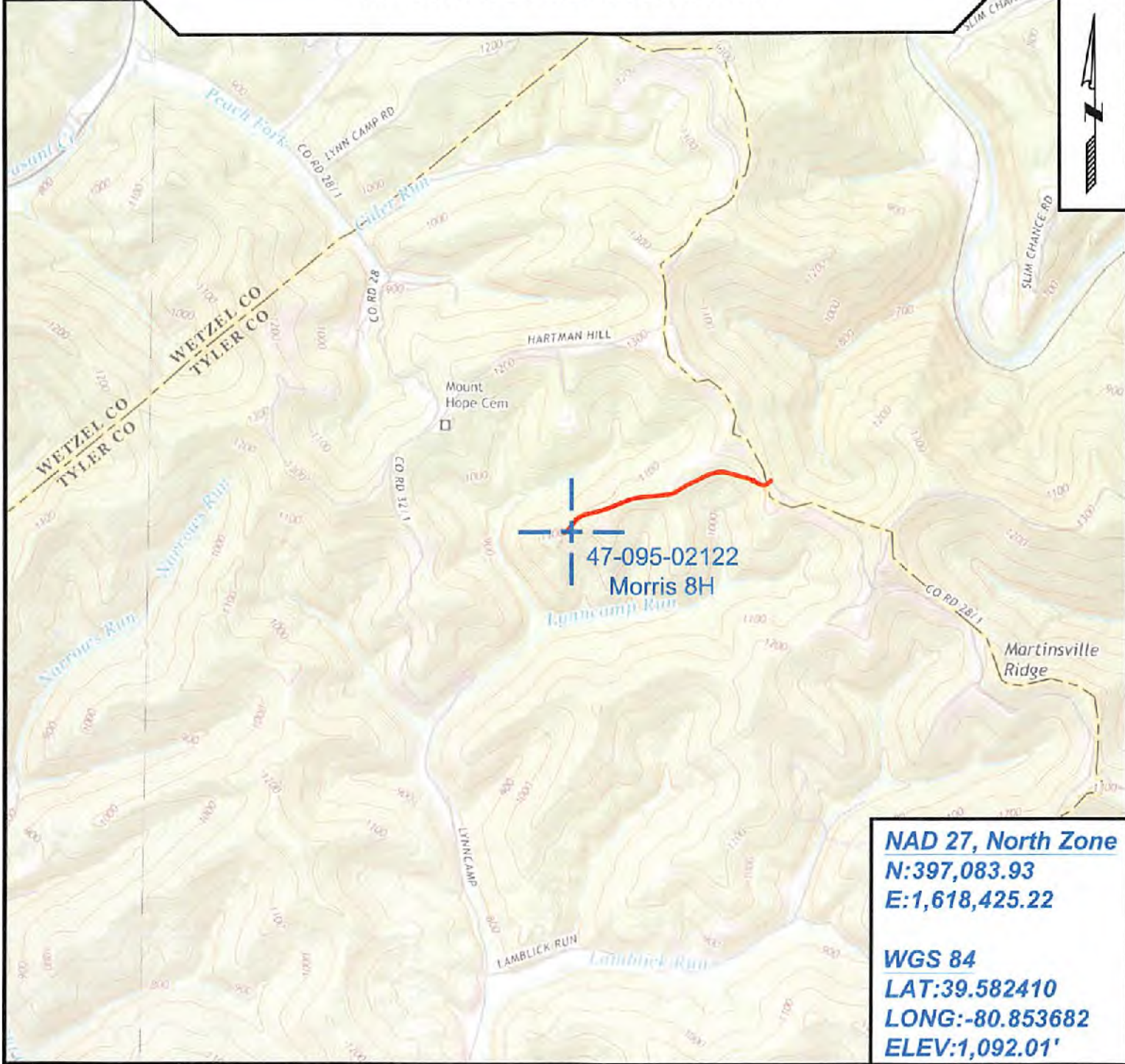
Date: November 11, 2021

District: Ellsworth

Project No: 69-54-00-08

47-095-02122 Morris 8H

Topo



NAD 27, North Zone
N:397,083.93
E:1,618,425.22

WGS 84
LAT:39.582410
LONG:-80.853682
ELEV:1,092.01'



SURVEYING AND MAPPING SERVICES PERFORMED BY:
ALLEGHENY SURVEYS, INC.
 1-800-482-8606
 237 Birch River Road
 Birch River, WV 26610
 PH: (304) 649-8606
 FAX: (304) 649-8608

PREPARED FOR:
EQT Production Company
 400 Woodcliff Drive
 Canonsburg, PA, 15317
 01/28/2022