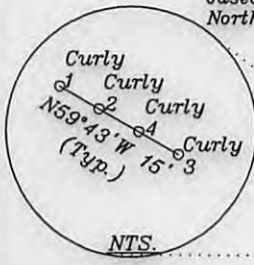
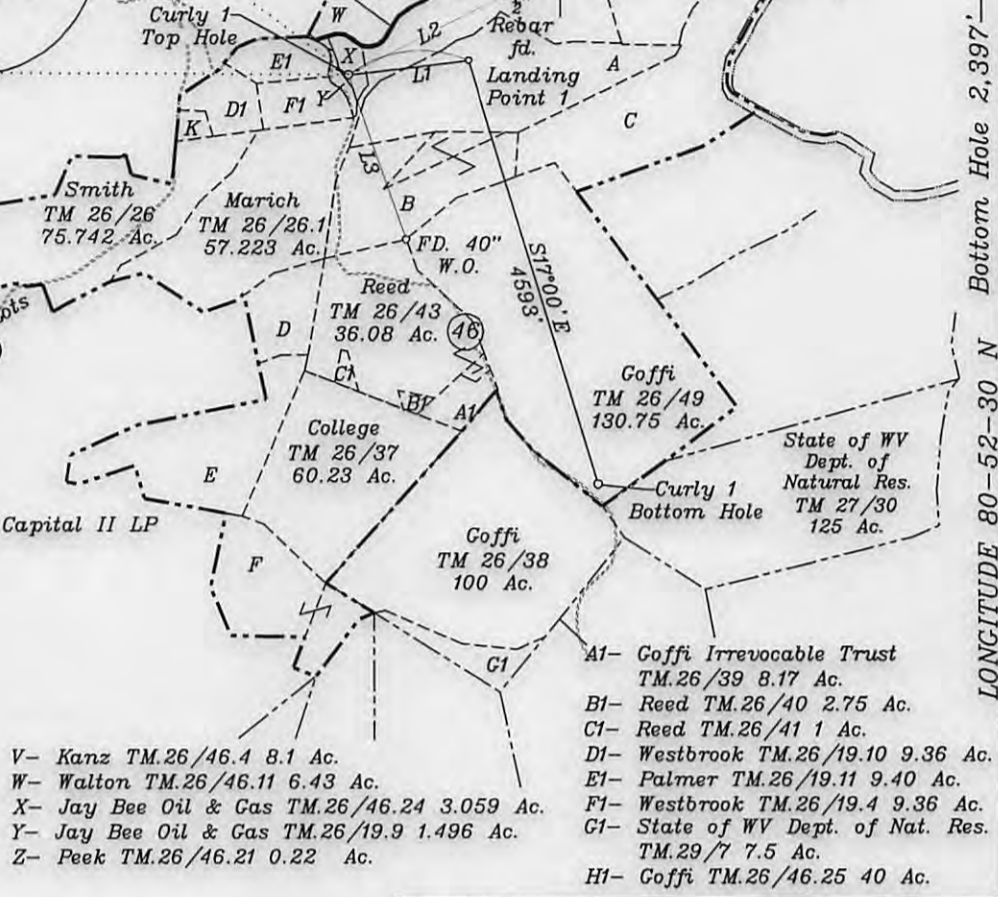
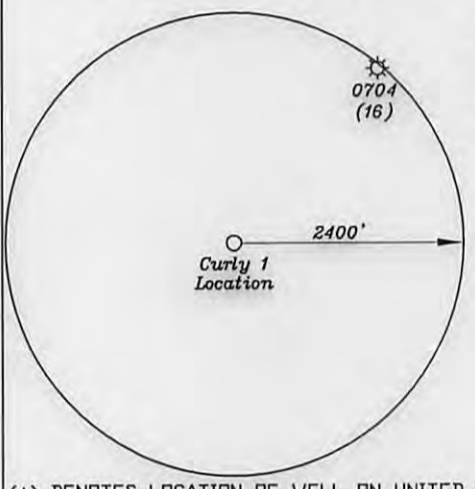


LATITUDE 39-30-00 N (TH)
 LATITUDE 39-27-30 N (BH)
 Note: Ties to wells and corners are based on State Plane Grid North-WV North Zone NAD 27.



- A- Coffi TM.26-46/45 52.9 Ac.
- B- Coffi TM.26/44 39 Ac.
- C- Coffi TM.26/47 80.24 Ac.
- D- Reed TM.26/42 13 Ac.
- E- Ash TM.26/36 41.68 Ac.
- F- Stevens, Reed, Harolesty, & Holmes TM.29/6 31.5 Ac.
- G- Holliday TM.26/46.12 3.238 Ac.
- H- Gibson TM.26/46.3 5.4 Ac.
- I- Patera TM.26/46.7 7.32 Ac.
- J- Ridgetop Capital LP & Ridgetop Capital II LP TM.26/ 46.14 8.693 Ac.
- K- Pittman TM.26/46.2 5.135 Ac.
- L- Johnson TM.26/46.9 5 Ac.
- M- Patera TM.26/46.6 1.702 Ac.
- N- Patera TM.26/46.15 3.722 Ac.
- O- Ridgetop Capital LP & Ridgetop Capital II LP TM.26/ 46.16 5.094 Ac.
- P- Shrader TM.26/46.1 5.58 Ac.
- Q- Peek TM.26/46.8 2.079 Ac.
- R- Peek TM.26/46.20 0.652 Ac.
- S- Peek TM.26/46.19 4.59 Ac.
- T- Ison TM.29/46.10 4.98 Ac.
- U- White TM.26/ 46.5 13.14 Ac.



- V- Kanz TM.26/46.4 8.1 Ac.
- W- Walton TM.26/46.11 6.43 Ac.
- X- Jay Bee Oil & Gas TM.26/46.24 3.059 Ac.
- Y- Jay Bee Oil & Gas TM.26/19.9 1.496 Ac.
- Z- Peek TM.26/46.21 0.22 Ac.

- A1- Coffi Irrevocable Trust TM.26/39 8.17 Ac.
- B1- Reed TM.26/40 2.75 Ac.
- C1- Reed TM.26/41 1 Ac.
- D1- Westbrook TM.26/19.10 9.36 Ac.
- E1- Palmer TM.26/19.11 9.40 Ac.
- F1- Westbrook TM.26/19.4 9.36 Ac.
- G1- State of WV Dept. of Nat. Res. TM.29/7 7.5 Ac.
- H1- Coffi TM.26/46.25 40 Ac.

Top Hole NAD 27-39.463095 N, 80.900647 W NAD 83 (Meters)-4368182.1 N, 508561.5 E State Plane NAD 27-353861.5 N, 1604562.1 E
Landing Point NAD 27-39.463559 N, 80.896223 W NAD 83 (Meters)-4368234.1 N, 508942.0 E State Plane NAD 27-354011 N, 1605814 E
Bottom Hole NAD 27-39.451557 N, 80.891228 W NAD 83 (Meters)-4366902.7 N, 509373.3 E State Plane NAD 27-349619 N, 1607156 E

(+) DENOTES LOCATION OF WELL ON UNITED STATES TOPOGRAPHIC MAPS

FILE NO. _____
 DRAWING NO. 1
 SCALE 1" = 2000'
 MINIMUM DEGREE OF ACCURACY 1 in 200
 PROVEN SOURCE OF ELEVATION GPS
submeter unit

I THE UNDERSIGNED, HEREBY CERTIFY THAT THIS PLAT IS CORRECT TO THE BEST OF MY KNOWLEDGE AND BELIEF AND SHOWS ALL THE INFORMATION REQUIRED BY LAW AND THE RULES ISSUED AND PRESCRIBED BY THE DEPARTMENT OF ENVIRONMENTAL PROTECTION.

(SIGNED) David Z. Jackson
 R.P.E. _____ L.L.S. 708



STATE OF WEST VIRGINIA
 Division of Environmental Protection
 OFFICE OF OIL AND GAS

DATE June 28, 2013
 OPERATOR'S WELL NO. Curly 1
 API WELL NO. _____

WELL TYPE: OIL GAS LIQUID INJECTION _____ WASTE DISPOSAL _____
 (IF "GAS") PRODUCTION X STORAGE _____ DEEP _____ SHALLOW X

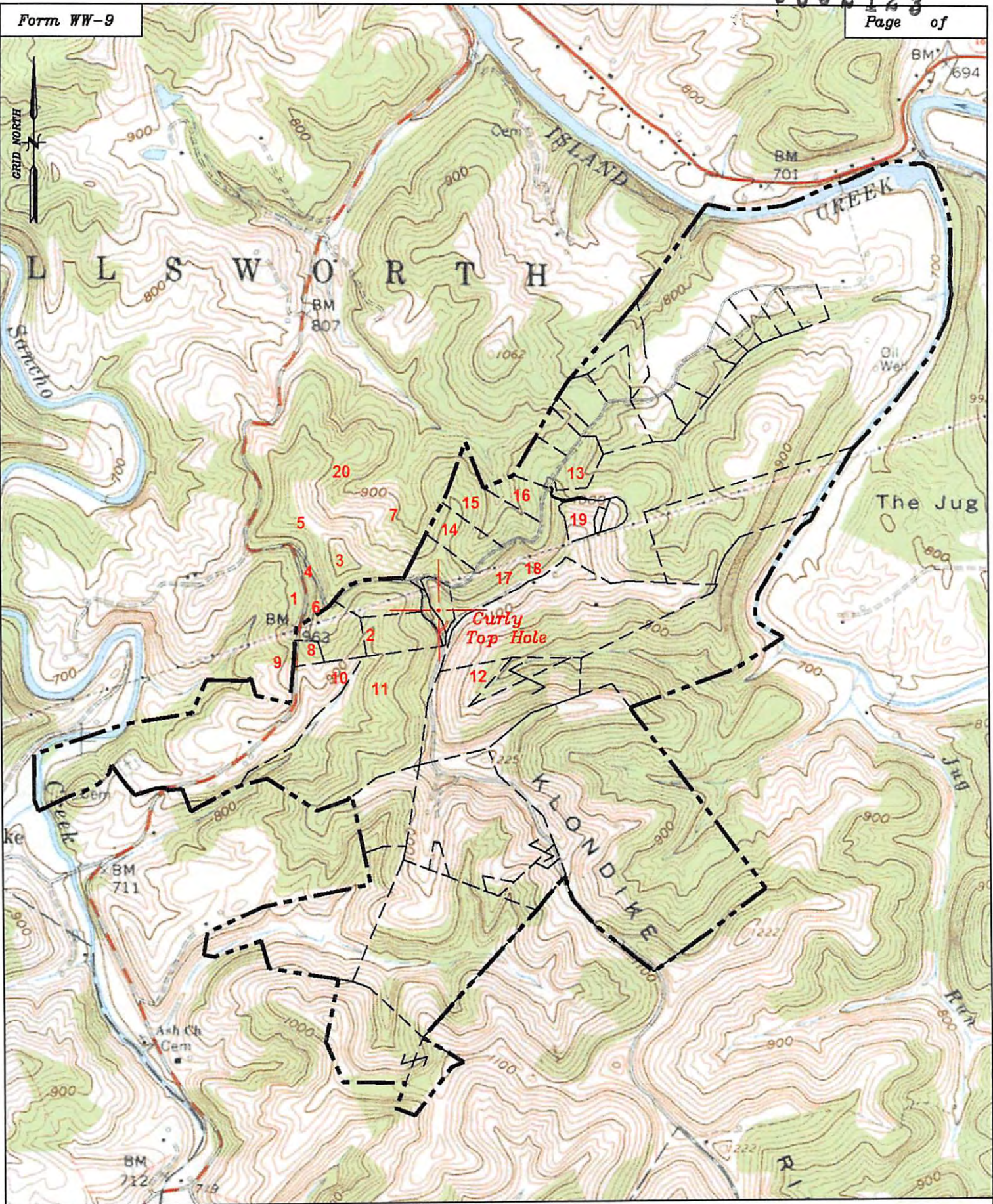
LOCATION: ELEVATION 1,121.0' WATER SHED Middle Island Creek
 DISTRICT Ellsworth COUNTY Tyler
 QUADRANGLE Middlebourne 7 1/2'

SURFACE OWNER Jay-Bee Oil & Gas Inc. ACREAGE 4.555 ac.
 OIL & GAS ROYALTY OWNER Jay-Bee Oil & Gas Inc. LEASE ACREAGE 4.555 ac.
 LEASE NO. RT2B and RT2C

PROPOSED WORK: DRILL X CONVERT _____ DRILL DEEPER _____ REDRILL _____ FRACTURE OR STIMULATE _____ PLUG OFF OLD FORMATION _____ PERFORATE NEW FORMATION X OTHER PHYSICAL CHANGE IN WELL (SPECIFY) _____

PLUG AND ABANDON _____ CLEAN OUT AND REPLUG _____
 TARGET FORMATION Marcellus ESTIMATED DEPTH 15,000'
 WELL OPERATOR Jay-Bee Oil & Gas, Inc. DESIGNATED AGENT Randy Broda
 ADDRESS 1720 Route 22 E, Union, NJ 07083 ADDRESS 3570 Shields Hill Rd., Cairo, WV 26337

11/08/2013



Well: Curly
 Quad: Middlebourne 7 1/2'
 District: Ellsworth
 County: Tyler

