



NOBLE ENERGY

Location: Tyler County, WV
 Field: Tyler
 Facility: SHR-3 Pad

Slot: Slot B
 Well: SHR-3B-HS
 Wellbore: SHR-3B-HS PWB

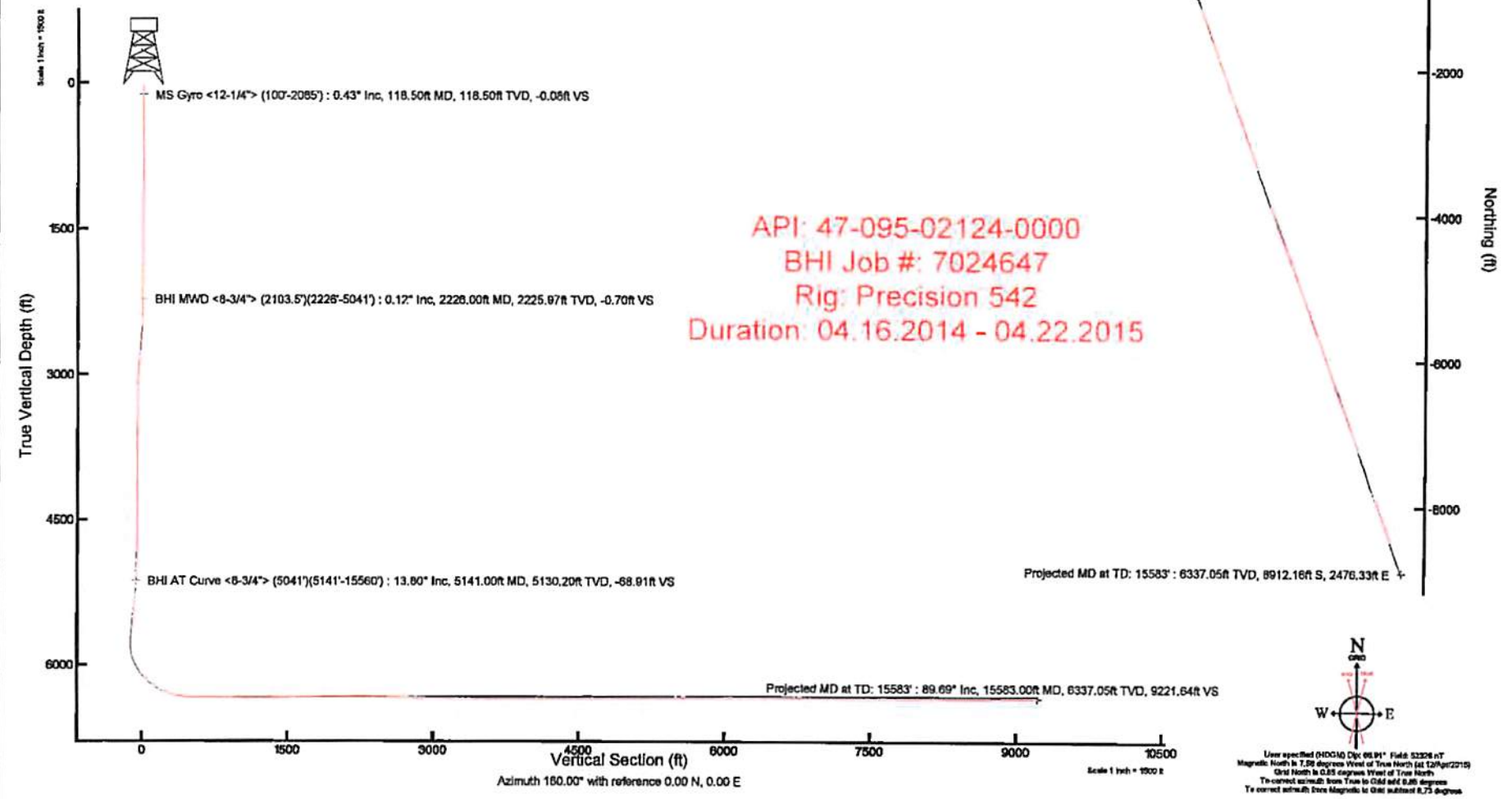
RECEIVED
 Office of Oil and Gas
 FEB 20 2018
 WV Department of Environmental Protection



Plot reference wellpath is SHR-3B-HS PWB New-A-D

This vertical depth are referenced to Precision 542 (RKB)	Grid System: NAD83 / Lambert West Virginia SP, Northern Zone (4770), US feet
Measured depths are referenced to Precision 542 (RKB)	North Reference: Grid system
Precision 542 (RKB) to Mean Sea Level of 770.81 feet	Depth True distance
Mean Sea Level to Slot B (At Slot: Slot B) -782.11 feet	Depth sea to feet
Coordinates are as listed referenced to Slot B	Created by: g0000 on 2/20/2015

Location Information					
Facility Name	Grid East (US Ft)	Grid North (US Ft)	Latitude	Longitude	
SHR-3 Pad	1823208.030	335743.440	39°24'50.800"N	80°50'00.030"W	
Slot	Local N (ft)	Local E (ft)	Grid East (US Ft)	Grid North (US Ft)	Longitude
Slot B	-2.30	18.61	1823317.840	335741.140	39°24'50.880"N 80°49'58.780"W
Precision 542 (RKB) to Mud line (At Slot: Slot B)	18.0ft				
Mean Sea Level to Mud line (At Slot: Slot B)	-782.11ft				
Precision 542 (RKB) to Mean Sea Level	770.81ft				



RECEIVED
 Office of Oil and Gas
 FEB 20 2018
 WV Department of
 Environmental Protection

ACTUAL WELLPATH REPORT (CSV version)

Prepared by Baker Hughes
 Software System: WellArchitect® 4.0.1

REFERENCE WELLPATH IDENTIFICATION

Operator NOBLE ENERGY
 Area Tyler County, WV
 Field Tyler
 Facility SHR-3 Pad
 Slot Slot B
 Well SHR-3B-HS
 Wellbore SHR-3B-HS AWB
 Wellpath SHR-3B-HS AWP Proj: 15583'
 Sidetrack (none)

REPORT SETUP INFORMATION

Projection NAD27 / Lambert West Virginia SP, Northern Zone (4701), US feet
 North Refe Grid
 Scale 0.999948
 Convergen 0.85° West
 Software S WellArchitect® 4.0.1
 User Gotfbral
 Report Ger 23/Apr/2015 at 11:25
 DataBase/! WNorthEast/ev7677.xml

WELLPATH	Local North [ft]	Local East [ft]	Easting [US ft]	Northing [US ft]	Latitude	Longitude
Slot Locati	-2.3	19.61	1623318	335741.1	39°24'50.8"	80°49'59.780"W
Facility Ref			1623298	335743.4	39°24'50.9"	80°50'00.030"W
Field Refer			609601.2	0	38°23'48.7"	84°21'09.765"W

WELLPATH DATUM

Calculation Minimum curvature
 Horizontal Slot
 Vertical Re Precision 542 (RKB)
 MD Refere Precision 542 (RKB)
 Field Vertic Mean Sea Level
 Precision S 770.61ft
 Precision S 770.61ft
 Precision S 18.50ft
 Section Ori N 0.00, E 0.00 ft
 Section Azl 160.00°

WELLPATH DATA † = interpolated/extrapolated station

MD [ft]	Inclination [°]	Azimuth [°]	TVD [ft]	Vert Sect [ft]	North [ft]	East [ft]	Grid East [US ft]	Grid North [US ft]	Latitude	Longitude	Closure Dis [ft]	Closure Dir [°]	DLS ["/100ft]
0	0	58.08	0	0	0	0	0 1623318	335741.1	39°24'50.8"	80°49'59.7"	0	0	0
18.5	0	58.08	18.5	0	0	0	0 1623318	335741.1	39°24'50.8"	80°49'59.7"	0	0	0

118.5	0.43	58.08	118.5	-0.08	0.2	0.32	1623318	335741.3	39°24'50.8" 80°49'59.7"	0.38	58.08	0.43
218.5	0.22	73.22	218.5	-0.14	0.45	0.82	1623318	335741.6	39°24'50.8" 80°49'59.7"	0.94	61.147	0.23
318.5	0.43	34.28	318.5	-0.35	0.82	1.22	1623319	335742	39°24'50.8" 80°49'59.7"	1.47	56.08	0.29
418.5	0.6	19.29	418.49	-0.98	1.62	1.6	1623319	335742.8	39°24'50.8" 80°49'59.7"	2.28	44.614	0.22
518.5	0.56	26.42	518.49	-1.72	2.55	1.99	1623320	335743.7	39°24'50.9" 80°49'59.7"	3.24	37.936	0.08
618.5	0.38	88.46	618.48	-1.95	3	2.54	1623320	335744.1	39°24'50.9" 80°49'59.7"	3.93	40.246	0.51
718.5	0.16	157.89	718.48	-1.71	2.88	2.92	1623321	335744	39°24'50.9" 80°49'59.7"	4.1	45.432	0.36
818.5	0.12	195.83	818.48	-1.48	2.65	2.95	1623321	335743.8	39°24'50.9" 80°49'59.7"	3.96	48.046	0.1
918.5	0.1	105.4	918.48	-1.35	2.53	3	1623321	335743.7	39°24'50.9" 80°49'59.7"	3.92	49.934	0.16
1018.5	0.18	44.44	1018.48	-1.36	2.61	3.2	1623321	335743.8	39°24'50.9" 80°49'59.7"	4.13	50.723	0.16
1118.5	0.2	164.65	1118.48	-1.26	2.56	3.35	1623321	335743.7	39°24'50.9" 80°49'59.7"	4.22	52.657	0.33
1218.5	0.33	244.41	1218.48	-1.06	2.27	3.14	1623321	335743.4	39°24'50.9" 80°49'59.7"	3.87	54.183	0.35
1318.5	0.2	294.69	1318.48	-1.15	2.21	2.72	1623320	335743.4	39°24'50.9" 80°49'59.7"	3.51	50.866	0.25
1418.5	0.17	273.49	1418.48	-1.33	2.3	2.42	1623320	335743.4	39°24'50.9" 80°49'59.7"	3.33	46.441	0.07
1518.5	0.43	178.56	1518.48	-1.04	1.93	2.28	1623320	335743.1	39°24'50.8" 80°49'59.7"	2.98	49.702	0.48
1618.5	0.28	188.5	1618.48	-0.46	1.31	2.25	1623320	335742.5	39°24'50.8" 80°49'59.7"	2.61	59.719	0.16
1718.5	0.12	252.98	1718.48	-0.26	1.04	2.11	1623320	335742.2	39°24'50.8" 80°49'59.7"	2.36	63.771	0.25
1818.5	0.36	39.83	1818.48	-0.42	1.25	2.21	1623320	335742.4	39°24'50.8" 80°49'59.7"	2.54	60.52	0.47
1918.5	0.27	32.98	1918.47	-0.72	1.69	2.54	1623320	335742.8	39°24'50.8" 80°49'59.7"	3.05	56.391	0.1
2018.5	0.37	51.57	2018.47	-0.96	2.09	2.93	1623321	335743.2	39°24'50.9" 80°49'59.7"	3.59	54.466	0.14
2103.5	0.27	99.72	2103.47	-0.95	2.23	3.34	1623321	335743.4	39°24'50.9" 80°49'59.7"	4.01	56.3	0.33
2226	0.12	127.81	2225.97	-0.7	2.1	3.72	1623321	335743.2	39°24'50.9" 80°49'59.7"	4.27	60.594	0.14
2264	0.09	324.41	2263.97	-0.69	2.1	3.74	1623321	335743.2	39°24'50.9" 80°49'59.7"	4.29	60.688	0.55
2353	2.5	339.65	2352.94	-2.7	3.98	3.02	1623321	335745.1	39°24'50.9" 80°49'59.7"	4.99	37.238	2.71
2443	4.16	340.96	2442.79	-7.93	8.9	1.27	1623319	335750	39°24'50.9" 80°49'59.7"	8.99	8.145	1.85
2533	7.24	339.82	2532.33	-16.87	17.31	-1.75	1623316	335758.5	39°24'51.0" 80°49'59.8"	17.4	354.235	3.42
2622	5.73	335.32	2620.76	-26.9	26.61	-5.54	1623312	335767.8	39°24'51.1" 80°49'59.8"	27.18	348.245	1.79
2712	4.37	2.75	2710.42	-34.54	34.12	-7.25	1623310	335775.3	39°24'51.2" 80°49'59.8"	34.88	348.005	3.04
2802	2.78	1.23	2800.24	-39.74	39.73	-7.04	1623311	335780.9	39°24'51.2" 80°49'59.8"	40.35	349.954	1.77
2891	4.42	9.51	2889.06	-44.74	45.27	-6.43	1623311	335786.4	39°24'51.3" 80°49'59.8"	45.72	351.922	1.93
2981	3.55	3.18	2978.85	-50.32	51.47	-5.7	1623312	335792.6	39°24'51.3" 80°49'59.8"	51.79	353.683	1.08
3071	1.13	350.55	3068.76	-53.75	55.13	-5.69	1623312	335796.3	39°24'51.4" 80°49'59.8"	55.42	354.109	2.73
3160	0.76	21.71	3157.75	-55.06	56.55	-5.61	1623312	335797.7	39°24'51.4" 80°49'59.8"	56.82	354.329	0.7
3250	0.4	316.13	3247.75	-55.79	57.33	-5.61	1623312	335798.5	39°24'51.4" 80°49'59.8"	57.6	354.409	0.77
3340	0.37	340.45	3337.75	-56.37	57.83	-5.93	1623312	335799	39°24'51.4" 80°49'59.8"	58.13	354.148	0.18
3429	1.02	75.41	3426.74	-56.58	58.3	-5.26	1623312	335799.4	39°24'51.4" 80°49'59.8"	58.53	354.848	1.25
3519	0.8	45.64	3516.73	-56.76	58.94	-4.03	1623314	335800.1	39°24'51.4" 80°49'59.8"	59.08	356.087	0.57
3608	0.55	84.76	3605.73	-56.91	59.41	-3.16	1623314	335800.6	39°24'51.4" 80°49'59.8"	59.5	356.953	0.57
3698	0.24	65.48	3695.72	-56.82	59.53	-2.56	1623315	335800.7	39°24'51.4" 80°49'59.8"	59.58	357.537	0.37
3787	0.26	98.97	3784.72	-56.73	59.58	-2.19	1623315	335800.7	39°24'51.4" 80°49'59.8"	59.62	357.893	0.16
3877	0.67	140.63	3874.72	-56.14	59.14	-1.66	1623316	335800.3	39°24'51.4" 80°49'59.8"	59.16	358.396	0.56
3966	0.41	127.77	3963.72	-55.38	58.54	-1.07	1623317	335799.7	39°24'51.4" 80°49'59.8"	58.55	358.949	0.32
4056	0.4	70.05	4053.71	-55.1	58.45	-0.52	1623317	335799.6	39°24'51.4" 80°49'59.7"	58.45	359.486	0.43
4145	0.37	69.44	4142.71	-55.11	58.66	0.04	1623318	335799.8	39°24'51.4" 80°49'59.7"	58.66	0.036	0.03
4235	0.39	14.8	4232.71	-55.36	59.05	0.39	1623318	335800.2	39°24'51.4" 80°49'59.7"	59.06	0.376	0.39
4325	0.11	34.9	4322.71	-55.66	59.42	0.51	1623318	335800.6	39°24'51.4" 80°49'59.7"	59.42	0.496	0.32
4414	0.55	274.16	4411.71	-55.89	59.52	0.14	1623318	335800.7	39°24'51.4" 80°49'59.7"	59.52	0.133	0.69
4504	0.32	301.77	4501.71	-56.26	59.69	-0.51	1623317	335800.8	39°24'51.4" 80°49'59.7"	59.69	359.513	0.34
4593	0.52	255.21	4590.7	-56.49	59.71	-1.11	1623317	335800.9	39°24'51.4" 80°49'59.8"	59.72	358.936	0.43

4683	1.99	221.18	4680.68	-55.78	58.43	-2.53	1623315	335799.6	39°24'51.4'	80°49'59.8'	58.49	3357.518					
4772	6.31	244.77	4769.43	-54.58	55.18	-7.98	1623310	335796.3	39°24'51.4'	80°49'59.8'	55.76	3357.775					
4862	9.61	248.1	4858.55	-53.88	50.27	-19.42	1623298	335791.4	39°24'51.3'	80°50'00.0'	53.89	3358.874					
4952	12.66	261.73	4946.86	-55.64	46.05	-36.16	1623281	335787.2	39°24'51.3'	80°50'00.2'	58.55	3359.859					
5041	14.86	269.14	5033.31	-61.37	44.48	-57.23	1623260	335785.6	39°24'51.3'	80°50'00.5'	72.48	307.853					
5141	13.8	266.24	5130.2	-68.91	43.5	-81.95	1623236	335784.6	39°24'51.2'	80°50'00.8'	92.78	297.96					1.28
5231	20.81	261.45	5216.07	-75.09	40.42	-108.51	1623209	335781.6	39°24'51.2'	80°50'01.1'	115.79	290.429					7.94
5321	24.53	256.03	5299.12	-80.23	33.53	-142.46	1623175	335774.7	39°24'51.1'	80°50'01.6'	146.35	283.243					4.74
5410	29.94	254.83	5378.22	-84.04	23.25	-181.86	1623136	335764.4	39°24'51.0'	80°50'02.1'	183.34	277.285					6.11
5500	31.22	254.65	5455.7	-87.82	11.19	-226.03	1623092	335752.3	39°24'50.9'	80°50'02.6'	226.3	272.835					1.43
5589	31.31	255.67	5531.78	-91.98	-0.64	-270.68	1623047	335740.5	39°24'50.8'	80°50'03.2'	270.68	269.866					0.6
5679	31.63	257.32	5608.54	-97.3	-11.6	-316.36	1623001	335729.5	39°24'50.7'	80°50'03.8'	316.57	267.899					1.02
5768	31.59	258.63	5684.34	-103.77	-21.32	-361.98	1622956	335719.8	39°24'50.6'	80°50'04.3'	362.61	266.629					0.77
5858	31.66	255.58	5760.98	-109.6	-31.85	-407.97	1622910	335709.3	39°24'50.5'	80°50'04.9'	409.21	265.536					1.78
5948	31.7	240.1	5837.69	-107.83	-49.55	-451.41	1622866	335691.6	39°24'50.3'	80°50'05.5'	454.13	263.736					9.01
6038	33.24	222.7	5913.79	-92.42	-79.53	-488.73	1622829	335661.6	39°24'50.0'	80°50'05.9'	495.16	260.757					10.49
6128	35.94	208.17	5988	-63.43	-121.02	-517.98	1622800	335620.1	39°24'49.6'	80°50'06.3'	531.93	256.849					9.62
6217	39.15	198.23	6058.62	-23.9	-170.79	-539.12	1622779	335570.4	39°24'49.1'	80°50'06.6'	565.53	252.422					7.69
6307	46.8	190.93	6124.46	26.67	-230.11	-554.26	1622763	335511	39°24'48.5'	80°50'06.7'	600.13	247.453					10.13
6396	53.3	185.92	6181.6	86.67	-297.55	-564.11	1622754	335443.6	39°24'47.8'	80°50'06.9'	637.77	242.19					8.48
6486	59.22	180.97	6231.59	155.31	-372.19	-568.49	1622749	335369	39°24'47.1'	80°50'06.9'	679.49	236.787		8.01	Top perf	Bottom per LL	# of Stgs
6576	66.35	176.01	6272.75	231.17	-452.11	-566.27	1622751	335289.1	39°24'46.3'	80°50'06.9'	724.61	231.396		9.31	6710	15583	8873 44.365
6665	72.89	171.92	6303.73	312.08	-535	-557.44	1622760	335206.2	39°24'45.5'	80°50'06.7'	772.64	226.177		8.52			
6755	81.23	168.8	6323.87	398.28	-621.38	-542.73	1622775	335119.8	39°24'44.6'	80°50'06.5'	825.03	221.135		9.86			
6844	87.94	166.18	6332.27	486.07	-707.82	-523.54	1622794	335033.4	39°24'43.8'	80°50'06.3'	880.4	216.488		8.09			
6934	89.91	160.74	6333.96	575.86	-794.05	-497.93	1622820	334947.1	39°24'42.9'	80°50'05.9'	937.26	212.091		6.43			
7024	89.6	159.43	6334.34	665.85	-878.66	-467.28	1622850	334862.5	39°24'42.1'	80°50'05.5'	995.19	208.004		1.5			
7113	89.63	158.63	6334.94	754.84	-961.77	-435.43	1622882	334779.4	39°24'41.3'	80°50'05.1'	1055.74	204.358		0.9			
7203	89.6	158.16	6335.55	844.8	-1045.44	-402.29	1622915	334695.8	39°24'40.4'	80°50'04.7'	1120.17	201.047		0.52			
7292	89.17	157.63	6336.5	933.74	-1127.89	-368.8	1622949	334613.3	39°24'39.6'	80°50'04.2'	1186.66	198.107		0.77			
7382	89.17	157.1	6337.81	1023.63	-1210.95	-334.17	1622983	334530.3	39°24'38.8'	80°50'03.8'	1256.21	195.427		0.59			
7471	89.54	157.46	6338.81	1112.52	-1293.04	-299.8	1623018	334448.2	39°24'38.0'	80°50'03.3'	1327.34	193.054		0.58			
7561	89.97	158.14	6339.19	1202.46	-1376.37	-265.79	1623052	334364.9	39°24'37.2'	80°50'02.9'	1401.8	190.93		0.89			
7651	90.83	160.57	6338.56	1292.44	-1460.58	-234.06	1623084	334280.6	39°24'36.4'	80°50'02.4'	1479.21	189.104		2.86			
7740	91.54	160.38	6336.72	1381.42	-1544.44	-204.32	1623113	334196.8	39°24'35.5'	80°50'02.0'	1557.9	187.536		0.83			
7830	91.17	162.54	6334.6	1471.36	-1629.74	-175.72	1623142	334111.5	39°24'34.7'	80°50'01.7'	1639.19	186.154		2.43			
7919	91.11	160.96	6332.82	1560.3	-1714.25	-147.85	1623170	334027	39°24'33.9'	80°50'01.3'	1720.61	184.929		1.78			
8009	91.11	158.68	6331.08	1650.27	-1798.7	-116.81	1623201	333942.5	39°24'33.0'	80°50'00.9'	1802.49	183.716		2.53			
8098	91.11	159.35	6329.36	1739.24	-1881.78	-84.94	1623233	333859.5	39°24'32.2'	80°50'00.5'	1883.7	182.585		0.75			
8188	91.14	160.56	6327.59	1829.22	-1966.31	-54.1	1623264	333774.9	39°24'31.4'	80°50'00.0'	1967.05	181.576		1.34			
8277	90.37	160.45	6326.42	1918.21	-2050.2	-24.4	1623293	333691.1	39°24'30.6'	80°49'59.7'	2050.35	180.682		0.87			
8367	90.4	159.99	6325.81	2008.21	-2134.89	6.05	1623324	333606.4	39°24'29.7'	80°49'59.2'	2134.9	179.838		0.51			
8456	90.46	160.58	6325.14	2097.2	-2218.67	36.07	1623354	333522.6	39°24'28.9'	80°49'58.9'	2218.96	179.068		0.67			
8546	90.46	159.65	6324.42	2187.2	-2303.3	66.69	1623384	333438	39°24'28.1'	80°49'58.4'	2304.26	178.342		1.03			
8635	90	158.89	6324.06	2276.19	-2386.54	98.19	1623416	333354.7	39°24'27.3'	80°49'58.0'	2388.55	177.644		1			
8725	89.45	159.13	6324.5	2366.18	-2470.56	130.43	1623448	333270.7	39°24'26.4'	80°49'57.6'	2474	176.978		0.67			
8814	88.92	160.03	6325.76	2455.16	-2553.96	161.47	1623479	333187.3	39°24'25.6'	80°49'57.2'	2559.06	176.382		1.17			
8904	88.92	162.38	6327.46	2545.12	-2639.14	190.46	1623508	333102.1	39°24'24.8'	80°49'56.8'	2646	175.872		2.61			
8993	88.86	162.31	6329.18	2634.03	-2723.93	217.45	1623535	333017.4	39°24'23.9'	80°49'56.4'	2732.6	175.436		0.1			

RECEIVED
FEB 20 2018

WV Department of
Environmental Protection

9083	88.52	160.81	6331.24	2723.97	-2809.29	245.91	1623564	332932	39°24'23.11	80°49'56.1	2820.03	174.997
9172	88.52	159.15	6333.54	2812.94	-2892.88	276.37	1623594	332848.4	39°24'22.3	80°49'55.7	2906.05	174.543
9261	88.52	158.75	6335.84	2901.89	-2975.91	308.32	1623626	332765.4	39°24'21.5	80°49'55.2	2991.84	174.085
9351	88.98	159	6337.8	2991.85	-3059.84	340.75	1623658	332681.5	39°24'20.6	80°49'54.8	3078.76	173.646
9441	89.17	160.03	6339.25	3081.84	-3144.14	372.24	1623690	332597.2	39°24'19.8	80°49'54.4	3166.1	173.248
9530	89.11	159	6340.59	3170.82	-3227.5	403.39	1623721	332513.8	39°24'19.0	80°49'54.0	3252.61	172.876
9620	89.2	158.02	6341.92	3260.78	-3311.23	436.35	1623754	332430.1	39°24'18.2	80°49'53.5	3339.86	172.493
9709	89.14	159.13	6343.21	3349.74	-3394.07	468.86	1623786	332347.3	39°24'17.4	80°49'53.1	3426.3	172.135
9799	89.14	159.91	6344.56	3439.73	-3478.37	500.35	1623818	332263	39°24'16.5	80°49'52.7	3514.18	171.814
9889	89.54	160.1	6345.59	3529.72	-3562.94	531.12	1623849	332178.4	39°24'15.7	80°49'52.3	3602.31	171.522
9978	90.12	160.63	6345.86	3618.72	-3646.77	561.02	1623879	332094.6	39°24'14.9	80°49'51.9	3689.67	171.254
10068	90.31	160.07	6345.52	3708.72	-3731.52	591.29	1623909	332009.8	39°24'14.0	80°49'51.5	3778.08	170.996
10157	90.46	160.89	6344.92	3797.71	-3815.41	621.03	1623939	331925.9	39°24'13.2	80°49'51.1	3865.62	170.755
10247	90.34	162.51	6344.29	3887.67	-3900.85	649.28	1623967	331840.5	39°24'12.4	80°49'50.7	3954.52	170.55
10336	90.55	163.8	6343.6	3976.53	-3986.03	675.07	1623993	331755.3	39°24'11.5	80°49'50.4	4042.79	170.388
10426	90.34	162.46	6342.9	4066.39	-4072.15	701.19	1624019	331669.2	39°24'10.7	80°49'50.0	4132.08	170.23
10515	90.28	160.53	6342.42	4155.35	-4156.54	729.44	1624047	331584.8	39°24'09.9	80°49'49.7	4220.06	170.046
10605	90.25	159.43	6342.01	4245.35	-4241.1	760.25	1624078	331500.3	39°24'09.0	80°49'49.2	4308.7	169.837
10695	90.28	157.42	6341.59	4335.31	-4324.79	793.34	1624111	331416.6	39°24'08.2	80°49'48.8	4396.95	169.605
10784	90.31	156.9	6341.13	4424.2	-4406.81	827.88	1624145	331334.6	39°24'07.4	80°49'48.4	4483.9	169.36
10874	90.25	158.23	6340.69	4514.12	-4490	862.23	1624180	331251.4	39°24'06.6	80°49'47.9	4572.04	169.13
10964	90.25	158.98	6340.3	4604.09	-4573.79	895.06	1624213	331167.6	39°24'05.8	80°49'47.5	4660.55	168.928
11053	90.28	159.2	6339.89	4693.08	-4656.93	926.82	1624244	331084.5	39°24'04.9	80°49'47.0	4748.26	168.744
11143	90.25	159.99	6339.47	4783.07	-4741.28	958.2	1624276	331000.1	39°24'04.1	80°49'46.6	4837.14	168.575
11232	90.31	160.48	6339.04	4872.07	-4825.04	988.3	1624306	330916.4	39°24'03.3	80°49'46.2	4925.21	168.424
11322	90.31	161.28	6338.55	4962.06	-4910.07	1017.78	1624335	330831.3	39°24'02.5	80°49'45.8	5014.45	168.289
11411	90.37	161.01	6338.02	5051.04	-4994.29	1046.54	1624364	330747.1	39°24'01.6	80°49'45.5	5102.76	168.165
11501	90.28	159.53	6337.51	5141.03	-5079.01	1076.92	1624395	330662.4	39°24'00.8	80°49'45.1	5191.92	168.029
11591	90.22	158.88	6337.12	5231.02	-5163.14	1108.87	1624426	330578.3	39°24'00.0	80°49'44.6	5280.87	167.879
11680	90.4	160.5	6336.64	5320.02	-5246.6	1139.76	1624457	330494.8	39°23'59.1	80°49'44.2	5368.98	167.744
11770	90.34	161.65	6336.06	5410	-5331.74	1168.95	1624487	330409.7	39°23'58.3	80°49'43.8	5458.37	167.634
11859	90.31	163.08	6335.55	5498.92	-5416.55	1195.91	1624513	330324.9	39°23'57.5	80°49'43.5	5547	167.549
11949	90.71	160.97	6334.75	5588.85	-5502.15	1223.68	1624541	330239.3	39°23'56.6	80°49'43.1	5636.58	167.461
12039	90.58	158.44	6333.74	5678.84	-5586.55	1254.9	1624572	330154.9	39°23'55.8	80°49'42.7	5725.76	167.34
12128	90.65	156.44	6332.78	5767.74	-5668.73	1289.04	1624607	330072.7	39°23'55.0	80°49'42.2	5813.44	167.189
12218	90.92	157.45	6331.55	5857.6	-5751.53	1324.28	1624642	329989.9	39°23'54.2	80°49'41.8	5902.02	167.034
12308	90.86	161.05	6330.15	5947.57	-5835.67	1356.16	1624674	329905.8	39°23'53.4	80°49'41.4	5991.18	166.917
12397	90.99	161.39	6328.71	6036.54	-5919.92	1384.81	1624702	329821.5	39°23'52.5	80°49'41.0	6079.73	166.834
12487	90.28	160.17	6327.72	6126.52	-6004.9	1414.43	1624732	329736.6	39°23'51.7	80°49'40.6	6169.23	166.746
12576	89.91	160.42	6327.57	6215.52	-6088.69	1444.44	1624762	329652.8	39°23'50.9	80°49'40.2	6257.67	166.654
12666	89.91	160.41	6327.71	6305.52	-6173.48	1474.61	1624792	329568	39°23'50.0	80°49'39.8	6347.15	166.566
12755	89.48	162.5	6328.18	6394.48	-6257.85	1502.91	1624820	329483.6	39°23'49.2	80°49'39.4	6435.79	166.495
12845	89.48	163.5	6329	6484.35	-6343.91	1529.22	1624847	329397.6	39°23'48.4	80°49'39.1	6525.62	166.447
12935	89.38	160.69	6329.89	6574.28	-6429.54	1556.89	1624874	329312	39°23'47.5	80°49'38.7	6615.35	166.388
13024	88.89	156.76	6331.24	6663.23	-6512.45	1589.17	1624907	329229	39°23'46.7	80°49'38.3	6703.54	166.287
13113	89.38	158.32	6332.58	6752.14	-6594.69	1623.17	1624941	329146.8	39°23'45.9	80°49'37.8	6791.51	166.172
13203	89.42	160.96	6333.53	6842.12	-6679.05	1654.48	1624972	329062.5	39°23'45.1	80°49'37.4	6880.92	166.087
13293	89.45	160.24	6334.41	6932.11	-6763.94	1684.37	1625002	328977.6	39°23'44.2	80°49'37.0	6970.51	166.017
13382	89.91	158.53	6334.91	7021.1	-6847.23	1715.7	1625033	328894.3	39°23'43.4	80°49'36.6	7058.91	165.933

RECEIVED
 Dept. of Oil and Gas
 FEB 20 2018
 WV Department of
 Environmental Protection

13472	89.91	158.5	6335.05	7111.07	-6930.98	1748.67	1625066	328810.5	39°23'42.6" 80°49'36.1"	7148.17	165.84
13561	89.85	159.14	6335.24	7200.05	-7013.97	1780.82	1625098	328727.6	39°23'41.8" 80°49'35.7"	7236.51	165.754
13651	89.97	159.57	6335.38	7290.05	-7098.19	1812.55	1625130	328643.3	39°23'40.9" 80°49'35.3"	7325.96	165.675
13741	90	159.11	6335.4	7380.04	-7182.4	1844.31	1625162	328559.1	39°23'40.1" 80°49'34.9"	7415.41	165.599
13830	89.97	157.93	6335.43	7469.01	-7265.22	1876.9	1625194	328476.3	39°23'39.3" 80°49'34.5"	7503.74	165.515
13920	89.97	157.83	6335.47	7558.95	-7348.59	1910.79	1625228	328393	39°23'38.5" 80°49'34.0"	7592.95	165.425
14009	89.91	159.84	6335.57	7647.92	-7431.59	1942.92	1625260	328310	39°23'37.7" 80°49'33.6"	7681.37	165.348
14099	90.03	161.06	6335.61	7737.92	-7516.4	1973.03	1625291	328225.2	39°23'36.8" 80°49'33.2"	7771.04	165.292
14189	90.28	160.6	6335.37	7827.91	-7601.4	2002.59	1625320	328140.2	39°23'36.0" 80°49'32.8"	7860.77	165.241
14278	90.15	160.83	6335.04	7916.9	-7685.41	2031.98	1625350	328056.2	39°23'35.2" 80°49'32.4"	7949.49	165.19
14368	90.25	161.17	6334.72	8006.89	-7770.51	2061.28	1625379	327971.1	39°23'34.3" 80°49'32.0"	8039.26	165.143
14458	90.18	160.7	6334.38	8096.87	-7855.57	2090.68	1625408	327886	39°23'33.5" 80°49'31.6"	8129.01	165.097
14547	89.78	160.03	6334.42	8185.87	-7939.39	2120.59	1625438	327802.2	39°23'32.7" 80°49'31.2"	8217.71	165.046
14637	89.63	160.13	6334.88	8275.87	-8024.01	2151.25	1625469	327717.6	39°23'31.8" 80°49'30.8"	8307.38	164.992
14726	89.63	160.69	6335.45	8364.87	-8107.85	2181.09	1625499	327633.7	39°23'31.0" 80°49'30.4"	8396.1	164.943
14816	89.57	161.51	6336.08	8454.85	-8193	2210.24	1625528	327548.6	39°23'30.2" 80°49'30.0"	8485.89	164.903
14906	89.6	160.53	6336.73	8544.83	-8278.1	2239.51	1625557	327463.5	39°23'29.4" 80°49'29.6"	8575.68	164.862
14995	90.15	158.08	6336.93	8633.81	-8361.35	2270.96	1625588	327380.2	39°23'28.5" 80°49'29.2"	8664.26	164.805
15085	90.06	156.85	6336.76	8723.72	-8444.48	2305.45	1625623	327297.1	39°23'27.7" 80°49'28.8"	8753.53	164.73
15174	90.22	159.79	6336.55	8812.68	-8527.17	2338.33	1625656	327214.4	39°23'26.9" 80°49'28.3"	8841.97	164.665
15264	89.66	160.38	6336.64	8902.67	-8611.79	2368.98	1625686	327129.8	39°23'26.1" 80°49'27.9"	8931.69	164.619
15353	90.55	160.36	6336.48	8991.67	-8695.62	2398.88	1625716	327046	39°23'25.2" 80°49'27.5"	9020.44	164.577
15443	89.6	159.19	6336.36	9081.67	-8780.06	2429.99	1625748	326961.6	39°23'24.4" 80°49'27.1"	9110.13	164.53
15532	89.82	161.14	6336.81	9170.66	-8863.78	2460.19	1625778	326877.8	39°23'23.6" 80°49'26.7"	9198.87	164.488
15560	89.69	161.71	6336.93	9198.65	-8890.32	2469.11	1625787	326851.3	39°23'23.3" 80°49'26.6"	9226.82	164.478
15583	89.69	161.71	6337.05	9221.64	-8912.16	2476.33	1625794	326829.5	39°23'23.1" 80°49'26.5"	9249.8	164.472

RECEIVED
 Office of Oil and Gas
 FEB 20 2018
 WV Department of
 Environmental Protection

TARGETS

Name	MD	TVD	North	East	Grid East	Grid North	Latitude	Longitude	Shape	Comment
	[ft]	[ft]	[ft]	[ft]	[US ft]	[US ft]				
SHR-3B-HS BHL Rev-1		6318.82	-8913.89	2472.35	1625790	326827.7	39°23'23.1" 80°49'26.6"		point	
SHR-3B-HS LP Rev-1		6334	-738.57	-503.21	1622814	335002.6	39°24'43.5" 80°50'06.0"		point	
SHR-3B-HS LP Plat		6339	-610	-550.01	1622768	335131.2	39°24'44.7" 80°50'06.6"		point	

WELLPATH COMPOSITION Ref Wellbore: SHR-3B-HS AWB Ref Wellpath: SHR-3B-HS AWP Proj: 15583'

Log Name/	Start MD	End MD	Pos	Unc	Model
	[ft]	[ft]			
01_MS Gyr	18.5	2103.5	Generic	gyro	- northseeking (Standard)
02_BHI MV	2103.5	5041	NaviTrak		(MagCorr)
03_BHI AT	5041	15560	NaviTrak		(AT Curve Short Spaced)
Projection	15560	15583	Blind		Drilling (std)

COMMENTS

Wellpath general comments

API: 47-095-02124-0000
 BHI Job #: 7024647
 Rig: Precision 542
 Duration: 04.16.2014 - 04.22.2015

MS Gyro <12-1/4> (100'-2085')"
BH1 MWD <8-3/4> (2103.5)|(2226'-5041')"
BH1 AT Curve <8-3/4> (5041)|(5141'-15560')"
Projected MID at TD: 15583'

RECEIVED
Office of Oil and Gas

FEB 20 2018

WV Department of
Environmental Protection