

RECEIVED

AUG 17 2015

WV GEOLOGICAL SURVEY
MORGANTOWN, WV



Weigle Unit 1H
Tyler County WV
Northing: 14326547.37
Easting: 1680227.52
As Drilled



WELL DETAILS Weigle Unit 1H
Ground Level: 1201.0
Northing: 14326547.37
Easting: 1680227.52
Latitude: 39° 27' 7.276" N
Longitude: 80° 51' 32.268" W

SITE DETAILS: Weigle / Kondike / Pad
Site Centre Northing: 14326547.37
Easting: 1680227.52
Positional Uncertainty: 0.0
Convergence: 0.09
Local North: Grid

LEGEND
-□- Weigle Unit 1H, Original Wellpath, Plan 5 V0
-□- As Drilled

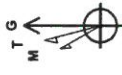
PROJECT DETAILS: Tyler County WV
Geodetic System: Universal Transverse Mercator (US Survey Feet)
Datum: NAD 1927 (NADCON CONUS)
Ellipsoid: Clarke 1866
Zone: Zone 17N (84 W to 76 W)
System Datum: Mean Sea Level

DESIGN TARGET DETAILS

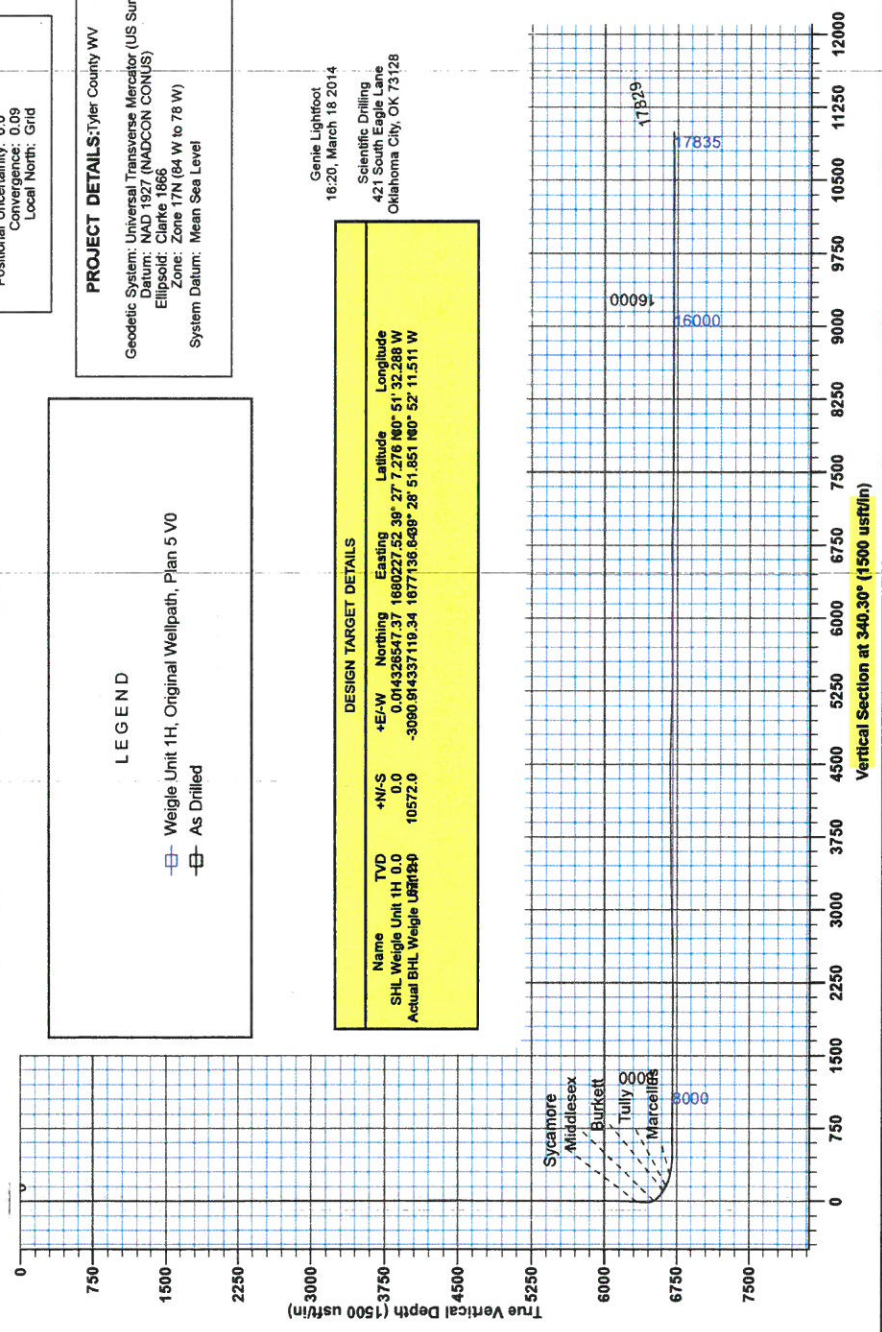
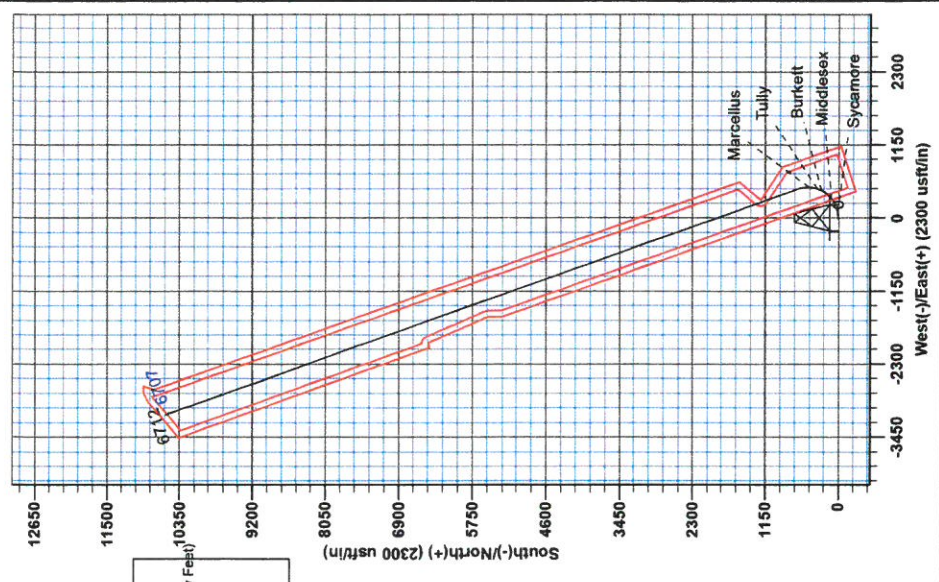
Name	TVD	+N/-S	+E/-W	Northing	Easting	Latitude	Longitude
SHL Weigle Unit 1H	0.0	0.0	0.0	14326547.37	1680227.52	39° 27' 7.276" N	80° 51' 32.268" W
Actual BHL Weigle Unit 1H	80	10572.0	-3090.91	14337119.34	1677136.648	28° 51' 8.51" N	80° 52' 11.511" W

Genie Lightfoot
16:20, March 18 2014
Scientific Drilling
421 South Eagle Lane
Oklahoma City, OK 73128

Azimuths to Grid North
True North: -0.09°
Magnetic North: -8.53°
Magnetic Field
Strength: 52439.0srT
Dip Angle: 66.99°
Date: 1/7/2014
Model: IGRF2010



To convert Magnetic North to Grid, Subtract 8.53°
To convert True North to Grid, Subtract 0.09°





RECEIVED
AUG 17 2015
WV GEOLOGICAL SURVEY
MORGANTOWN, WV

Antero Resources

**Tyler County WV
Weigle / Klondike / Pad
Weigle Unit 1H
Original Wellpath**

Design: As Drilled

EOW Completion Report

18 March, 2014



AUG 17 2015



Company:	Antero Resources	Local Co-ordinate Reference:	Well Weigle Unit 1H
Project:	Tyler County WV	TVD Reference:	Weigle Unit 1H GL 1201' + 24' RKB @ 1225.0usft
Site:	Weigle / Klondike / Pad	MD Reference:	Weigle Unit 1H GL 1201' + 24' RKB @ 1225.0usft
Well:	Weigle Unit 1H	North Reference:	Grid
Wellbore:	Original Wellpath	Survey Calculation Method:	Minimum Curvature
Design:	As Drilled	Database:	Oklahoma District

Project	Tyler County WV, Tyler Co West Virginia		
Map System:	Universal Transverse Mercator (US Survey Fee	System Datum:	Mean Sea Level
Geo Datum:	NAD 1927 (NADCON CONUS)		
Map Zone:	Zone 17N (84 W to 78 W)		

Site	Weigle / Klondike / Pad				
Site Position:		Northing:	14,326,547.37 usft	Latitude:	39° 27' 7.276 N
From:	Map	Easting:	1,680,227.52 usft	Longitude:	80° 51' 32.288 W
Position Uncertainty:	0.0 usft	Slot Radius:	13-3/16"	Grid Convergence:	0.09 °

Well	Weigle Unit 1H					
Well Position	+N/-S	0.0 usft	Northing:	14,326,547.37 usft	Latitude:	39° 27' 7.276 N
	+E/-W	0.0 usft	Easting:	1,680,227.52 usft	Longitude:	80° 51' 32.288 W
Position Uncertainty	2.0 usft		Wellhead Elevation:	1,225.0 usft	Ground Level:	1,201.0 usft

Wellbore	Original Wellpath				
Magnetics	Model Name	Sample Date	Declination (°)	Dip Angle (°)	Field Strength (nT)
	IGRF2010	1/7/2014	-8.44	66.99	52,439

Design	As Drilled				
Audit Notes:					
Version:	1.0	Phase:	ACTUAL	Tie On Depth:	0.0
Vertical Section:	Depth From (TVD) (usft)	+N/-S (usft)	+E/-W (usft)	Direction (°)	
	0.0	0.0	0.0	340.30	

Survey Program	Date 3/18/2014				
From (usft)	To (usft)	Survey (Wellbore)	Tool Name	Description	
100.0	5,600.1	Survey #1 Gyro to KOP (Original Wellpath)	SDI Standard Keeper	Scientific Drilling Intl. Standard Wireline Keeper	
5,667.0	17,829.0	Survey #2 MWD (Original Wellpath)	MWD SDI	MWD - Standard ver 1.0.1	

Survey									
MD (usft)	Inc (°)	Azi (azimuth) (°)	TVD (usft)	N/S (usft)	E/W (usft)	V. Sec (usft)	DLeg (°/100usft)		
0.0	0.00	0.00	0.0	0.0	0.0	0.0	0.0	0.00	0.00
100.0	0.38	330.79	100.0	0.3	-0.2	0.3	0.38		
200.0	0.23	344.52	200.0	0.8	-0.4	0.9	0.17		
300.0	0.13	354.37	300.0	1.1	-0.4	1.2	0.10		
400.0	0.08	302.48	400.0	1.2	-0.5	1.3	0.10		
500.0	0.08	206.93	500.0	1.2	-0.6	1.3	0.12		
600.0	0.13	177.54	600.0	1.0	-0.6	1.2	0.07		
700.0	0.21	164.33	700.0	0.7	-0.6	0.9	0.09		
800.0	0.17	179.39	800.0	0.4	-0.5	0.6	0.06		
900.0	0.10	155.10	900.0	0.2	-0.5	0.3	0.09		
1,000.0	0.11	192.82	1,000.0	0.0	-0.5	0.2	0.07		

AUG 17 2015



Company: Antero Resources	Local Co-ordinate Reference: Well Weigle Unit 1H
Project: Tyler County WV	TVD Reference: Weigle Unit 1H GL 1201' + 24' RKB @ 1225.0usft
Site: Weigle / Klondike / Pad	MD Reference: Weigle Unit 1H GL 1201' + 24' RKB @ 1225.0usft
Well: Weigle Unit 1H	North Reference: Grid
Wellbore: Original Wellpath	Survey Calculation Method: Minimum Curvature
Design: As Drilled	Database: Oklahoma District

Survey

MD (usft)	Inc (°)	Azi (azimuth) (°)	TVD (usft)	N/S (usft)	E/W (usft)	V. Sec (usft)	DLeg (°/100usft)
1,100.0	0.07	101.75	1,100.0	-0.1	-0.4	0.1	0.13
1,200.0	0.07	10.60	1,200.0	0.0	-0.4	0.1	0.10
1,300.0	0.12	341.00	1,300.0	0.1	-0.4	0.2	0.07
1,400.0	0.07	319.64	1,400.0	0.3	-0.5	0.4	0.06
1,500.0	0.10	321.39	1,500.0	0.4	-0.6	0.5	0.03
1,600.0	0.05	330.59	1,600.0	0.5	-0.6	0.7	0.05
1,700.0	0.07	12.20	1,700.0	0.6	-0.6	0.8	0.05
1,800.0	0.11	64.03	1,800.0	0.7	-0.5	0.8	0.09
1,900.0	0.11	73.81	1,900.0	0.7	-0.4	0.8	0.02
2,000.0	0.21	89.99	2,000.0	0.8	-0.1	0.8	0.11
2,100.0	0.17	75.07	2,100.0	0.8	0.2	0.7	0.06
2,200.0	0.20	108.24	2,200.0	0.8	0.6	0.6	0.11
2,300.0	0.20	98.41	2,300.0	0.7	0.9	0.4	0.03
2,400.0	0.12	294.59	2,400.0	0.7	1.0	0.4	0.32
2,500.0	0.21	290.51	2,500.0	0.8	0.7	0.6	0.09
2,600.0	0.24	301.54	2,600.0	1.0	0.4	0.8	0.05
2,700.0	0.40	276.76	2,700.0	1.2	-0.2	1.2	0.21
2,800.0	0.42	280.95	2,800.0	1.3	-0.9	1.5	0.04
2,900.0	0.65	288.92	2,900.0	1.5	-1.8	2.0	0.24
3,000.0	0.69	290.61	3,000.0	1.9	-2.9	2.8	0.04
3,100.0	0.72	279.16	3,100.0	2.2	-4.1	3.5	0.14
3,200.0	0.56	278.31	3,200.0	2.4	-5.2	4.0	0.16
3,300.0	0.32	271.07	3,300.0	2.5	-5.9	4.3	0.25
3,400.0	0.31	280.53	3,400.0	2.5	-6.5	4.6	0.05
3,500.0	0.29	279.43	3,500.0	2.6	-7.0	4.8	0.02
3,600.0	0.24	272.84	3,600.0	2.7	-7.4	5.0	0.06
3,700.0	0.49	251.40	3,700.0	2.6	-8.1	5.1	0.28
3,800.0	0.67	261.67	3,799.9	2.3	-9.0	5.2	0.21
3,900.0	0.71	260.32	3,899.9	2.1	-10.2	5.5	0.04
4,000.0	0.56	273.56	3,999.9	2.1	-11.3	5.8	0.21
4,100.0	0.44	276.18	4,099.9	2.1	-12.2	6.1	0.12
4,200.0	0.39	259.56	4,199.9	2.1	-12.9	6.4	0.13
4,300.0	0.50	257.10	4,299.9	2.0	-13.7	6.5	0.11
4,400.0	0.45	268.57	4,399.9	1.9	-14.5	6.6	0.11
4,500.0	0.39	282.67	4,499.9	1.9	-15.2	6.9	0.12
4,600.0	0.29	276.36	4,599.9	2.0	-15.8	7.2	0.11
4,700.0	0.42	220.61	4,699.9	1.8	-16.3	7.2	0.35
4,800.0	0.47	205.32	4,799.9	1.1	-16.7	6.7	0.13
4,900.0	0.57	212.95	4,899.9	0.3	-17.2	6.1	0.12
5,000.0	0.49	218.42	4,999.9	-0.4	-17.7	5.6	0.09
5,100.0	0.51	225.37	5,099.9	-1.1	-18.3	5.2	0.06
5,200.0	0.62	232.72	5,199.9	-1.7	-19.0	4.8	0.13
5,300.0	0.66	235.97	5,299.9	-2.4	-19.9	4.5	0.05
5,400.0	0.58	245.42	5,399.9	-2.9	-20.9	4.3	0.13

AUG 17 2015



EOW Completion Report



Company: Antero Resources
Project: Tyler County WV
Site: Weigle / Klondike / Pad
Well: Weigle Unit 1H
Wellbore: Original Wellpath
Design: As Drilled

Local Co-ordinate Reference: Well Weigle Unit 1H
TVD Reference: Weigle Unit 1H GL 1201' + 24' RKB @ 1225.0usft
MD Reference: Weigle Unit 1H GL 1201' + 24' RKB @ 1225.0usft
North Reference: Grid
Survey Calculation Method: Minimum Curvature
Database: Oklahoma District

Survey

MD (usft)	Inc (°)	Azi (azimuth) (°)	TVD (usft)	N/S (usft)	EW (usft)	V. Sec (usft)	DLeg (°/100usft)
5,500.0	0.46	238.48	5,499.9	-3.3	-21.7	4.2	0.14
5,600.0	0.32	233.62	5,599.9	-3.7	-22.2	4.0	0.14
5,600.1	0.32	233.40	5,600.0	-3.7	-22.2	4.0	1.02
5,667.0	0.34	252.38	5,666.9	-3.9	-22.6	4.0	0.17
5,761.0	0.08	226.93	5,760.9	-4.0	-22.9	4.0	0.29
5,855.0	0.32	261.19	5,854.9	-4.1	-23.2	4.0	0.27
5,949.0	0.34	292.96	5,948.9	-4.0	-23.7	4.2	0.19
6,040.0	1.41	135.99	6,039.9	-4.7	-23.2	3.4	1.90
6,075.0	5.58	93.34	6,074.8	-5.1	-21.2	2.3	13.26
6,106.0	10.99	76.23	6,105.5	-4.5	-16.8	1.4	18.99
6,135.0	15.17	72.19	6,133.7	-2.7	-10.5	1.0	14.75
6,169.0	17.98	73.17	6,166.3	0.2	-1.2	0.6	8.31
6,200.0	20.27	73.56	6,195.6	3.1	8.5	0.1	7.40
6,229.0	22.94	74.48	6,222.5	6.0	18.8	-0.6	9.28
6,263.0	26.42	74.36	6,253.4	9.9	32.4	-1.6	10.24
6,294.0	30.05	76.61	6,280.7	13.5	46.6	-3.0	12.20
6,323.0	34.56	77.62	6,305.2	17.0	61.7	-4.8	15.66
6,357.0	36.97	76.86	6,332.8	21.4	81.1	-7.2	7.21
6,361.0	37.48	76.71	6,336.0	21.9	83.5	-7.5	13.07
Sycamore							
6,388.0	40.96	75.75	6,356.9	26.0	100.0	-9.3	13.07
6,417.0	45.37	74.41	6,378.1	31.1	119.2	-10.9	15.53
6,451.0	49.50	71.67	6,401.1	38.4	143.1	-12.1	13.52
6,482.0	52.39	70.91	6,420.6	46.1	165.9	-12.5	9.51
6,511.0	55.06	71.28	6,437.8	53.7	188.1	-12.8	9.26
6,545.0	56.50	69.07	6,456.9	63.3	214.5	-12.8	6.84
6,576.0	57.65	63.23	6,473.7	73.8	238.3	-10.9	16.24
6,605.0	59.01	57.71	6,489.0	85.9	259.7	-6.6	16.86
6,639.0	60.07	54.79	6,506.2	102.2	284.1	0.5	8.03
6,654.0	60.62	53.00	6,513.6	109.9	294.6	4.2	11.02
Middlesex							
6,671.0	61.28	50.99	6,521.9	119.1	306.3	8.8	11.02
6,699.0	63.24	46.49	6,534.9	135.4	324.9	17.9	15.85
6,734.0	64.89	42.62	6,550.2	157.8	347.0	31.6	11.00
6,765.0	65.21	40.22	6,563.3	178.9	365.6	45.2	7.09
6,793.0	65.02	37.69	6,575.1	198.7	381.6	58.4	8.22
6,828.0	65.13	33.96	6,589.9	224.4	400.2	76.4	9.67
6,859.0	65.73	30.21	6,602.7	248.3	415.1	93.8	11.17
6,886.0	66.52	26.75	6,613.7	270.0	426.9	110.3	12.09
Burkett							
6,887.0	66.55	26.62	6,614.1	270.8	427.3	110.9	12.09
6,922.0	66.83	22.93	6,627.9	300.0	440.8	133.8	9.72
6,953.0	67.44	20.28	6,640.0	326.5	451.3	155.3	8.12
6,959.0	67.78	19.59	6,642.3	331.7	453.2	159.6	12.02
Tully							

AUG 17 2015



EOW Completion Report



Company: Antero Resources
 Project: Tyler County WV
 Site: Weigle / Klondike / Pad
 Well: Weigle Unit 1H
 Wellbore: Original Wellpath
 Design: As Drilled

Local Co-ordinate Reference: Well Weigle Unit 1H
 TVD Reference: Weigle Unit 1H GL 1201' + 24' RKB @ 1225.0usft
 MD Reference: Weigle Unit 1H GL 1201' + 24' RKB @ 1225.0usft
 North Reference: Grid
 Survey Calculation Method: Minimum Curvature
 Database: Oklahoma District

Survey

MD (usft)	Inc (°)	Azi (azimuth) (°)	TVD (usft)	N/S (usft)	EW (usft)	V. Sec (usft)	DLeg (°/100usft)
6,985.0	69.29	16.65	6,651.8	354.7	460.7	178.7	12.02
7,016.0	72.08	12.84	6,662.0	383.0	468.1	202.8	14.68
7,047.0	74.88	9.04	6,670.8	412.2	473.8	228.4	14.82
7,079.0	77.17	5.01	6,678.6	443.0	477.6	256.1	14.16
7,100.0	78.69	1.58	6,683.0	463.5	478.7	275.0	17.54
Marcellus							
7,110.0	79.43	359.96	6,684.9	473.3	478.9	284.2	17.54
7,141.0	81.78	355.25	6,689.9	503.9	477.6	313.4	16.80
7,173.0	82.72	352.98	6,694.2	535.4	474.3	344.2	7.62
7,235.0	84.58	350.45	6,701.1	596.4	465.5	404.6	5.04
7,264.0	86.26	345.62	6,703.4	624.6	459.5	433.2	17.58
7,333.0	90.75	338.99	6,705.2	690.3	438.5	502.1	11.60
7,428.0	90.31	339.95	6,704.3	779.2	405.2	597.1	1.11
7,522.0	90.31	340.57	6,703.8	867.7	373.4	691.0	0.66
7,616.0	90.31	339.78	6,703.3	956.1	341.6	785.0	0.84
7,710.0	90.66	339.87	6,702.5	1,044.4	309.1	879.0	0.38
7,804.0	88.20	340.30	6,703.5	1,132.7	277.1	973.0	2.66
7,898.0	88.37	340.30	6,706.3	1,221.2	245.5	1,067.0	0.18
7,992.0	89.78	340.66	6,707.8	1,309.8	214.1	1,161.0	1.55
8,086.0	90.00	340.28	6,708.0	1,398.4	182.6	1,255.0	0.47
8,180.0	89.96	339.87	6,708.0	1,486.8	150.6	1,349.0	0.44
8,274.0	89.60	337.76	6,708.4	1,574.4	116.6	1,442.9	2.28
8,368.0	90.04	337.58	6,708.7	1,661.3	80.9	1,536.8	0.51
8,463.0	89.69	339.25	6,708.9	1,749.7	46.0	1,631.8	1.80
8,557.0	89.43	340.66	6,709.6	1,838.0	13.8	1,725.8	1.53
8,651.0	89.60	342.33	6,710.4	1,927.1	-16.1	1,819.7	1.79
8,745.0	89.87	342.41	6,710.8	2,016.7	-44.6	1,913.7	0.30
8,839.0	88.99	341.27	6,711.8	2,106.0	-73.8	2,007.6	1.53
8,933.0	90.04	339.51	6,712.6	2,194.5	-105.4	2,101.6	2.18
9,027.0	89.87	339.78	6,712.7	2,282.7	-138.1	2,195.6	0.34
9,122.0	91.45	343.38	6,711.6	2,372.8	-168.1	2,290.6	4.14
9,216.0	91.01	342.59	6,709.5	2,462.7	-195.6	2,384.4	0.96
9,310.0	91.36	339.69	6,707.6	2,551.6	-226.0	2,478.4	3.11
9,404.0	90.04	339.16	6,706.4	2,639.6	-259.0	2,572.4	1.51
9,498.0	91.19	341.80	6,705.4	2,728.2	-290.4	2,666.4	3.06
9,592.0	91.19	341.62	6,703.5	2,817.4	-319.9	2,760.3	0.19
9,687.0	91.63	340.57	6,701.1	2,907.2	-350.7	2,855.3	1.20
9,780.0	91.19	339.51	6,698.9	2,994.6	-382.4	2,948.3	1.23
9,875.0	91.54	339.87	6,696.6	3,083.7	-415.4	3,043.2	0.53
9,969.0	91.28	339.51	6,694.3	3,171.8	-448.0	3,137.2	0.47
10,063.0	91.45	340.83	6,692.0	3,260.2	-479.9	3,231.2	1.42
10,157.0	90.48	339.16	6,690.5	3,348.5	-512.0	3,325.1	2.05
10,251.0	90.48	339.16	6,689.7	3,436.4	-545.5	3,419.1	0.00
10,345.0	89.52	338.55	6,689.7	3,524.0	-579.4	3,513.1	1.21
10,440.0	89.60	339.43	6,690.4	3,612.7	-613.4	3,608.1	0.93

AUG 17 2015



WV GEOLOGICAL SURVEY
MORGANTOWN, WV

EOW Completion Report



Company: Antero Resources
Project: Tyler County WV
Site: Weigle / Klondike / Pad
Well: Weigle Unit 1H
Wellbore: Original Wellpath
Design: As Drilled

Local Co-ordinate Reference: Well Weigle Unit 1H
TVD Reference: Weigle Unit 1H GL 1201' + 24' RKB @ 1225.0usft
MD Reference: Weigle Unit 1H GL 1201' + 24' RKB @ 1225.0usft
North Reference: Grid
Survey Calculation Method: Minimum Curvature
Database: Oklahoma District

Survey

MD (usft)	Inc (°)	Azi (azimuth) (°)	TVD (usft)	N/S (usft)	E/W (usft)	V. Sec (usft)	DLeg (°/100usft)
10,533.0	91.54	340.57	6,689.5	3,700.1	-645.2	3,701.0	2.42
10,628.0	91.45	341.18	6,687.0	3,789.8	-676.3	3,796.0	0.65
10,722.0	89.96	340.66	6,685.8	3,878.7	-707.1	3,890.0	1.68
10,816.0	90.31	341.18	6,685.6	3,967.5	-737.8	3,984.0	0.67
10,910.0	90.48	341.27	6,685.0	4,056.5	-768.1	4,078.0	0.20
11,004.0	90.40	341.18	6,684.2	4,145.5	-798.3	4,172.0	0.13
11,098.0	90.13	340.22	6,683.8	4,234.2	-829.4	4,266.0	1.06
11,192.0	90.31	339.60	6,683.5	4,322.5	-861.7	4,359.9	0.69
11,287.0	90.48	338.63	6,682.8	4,411.2	-895.5	4,454.9	1.04
11,381.0	88.90	340.83	6,683.3	4,499.4	-928.1	4,548.9	2.88
11,475.0	89.16	341.01	6,684.9	4,588.2	-958.8	4,642.9	0.34
11,569.0	89.60	341.10	6,685.9	4,677.1	-989.3	4,736.9	0.48
11,663.0	87.93	340.83	6,687.9	4,766.0	-1,020.0	4,830.8	1.80
11,754.0	88.81	339.87	6,690.5	4,851.6	-1,050.6	4,921.8	1.43
11,846.0	88.90	339.95	6,692.4	4,938.0	-1,082.2	5,013.8	0.13
11,938.0	87.76	340.04	6,695.0	5,024.4	-1,113.6	5,105.7	1.24
12,029.0	88.90	340.48	6,697.7	5,110.0	-1,144.3	5,196.7	1.34
12,120.0	89.16	340.74	6,699.2	5,195.9	-1,174.6	5,287.7	0.40
12,211.0	87.93	340.13	6,701.6	5,281.6	-1,205.0	5,378.7	1.51
12,302.0	91.45	341.10	6,702.0	5,367.4	-1,235.2	5,469.6	4.01
12,393.0	90.92	340.39	6,700.2	5,453.3	-1,265.2	5,560.6	0.97
12,485.0	90.92	342.33	6,698.7	5,540.5	-1,294.6	5,652.6	2.11
12,575.0	89.52	340.74	6,698.3	5,625.8	-1,323.1	5,742.6	2.35
12,667.0	89.70	340.78	6,699.0	5,712.7	-1,353.4	5,834.6	0.20
12,758.0	90.22	341.62	6,699.0	5,798.8	-1,382.8	5,925.5	1.09
12,853.0	89.60	339.25	6,699.2	5,888.3	-1,414.6	6,020.5	2.58
12,947.0	89.96	339.16	6,699.5	5,976.2	-1,447.9	6,114.5	0.39
13,041.0	89.69	338.72	6,699.8	6,063.9	-1,481.7	6,208.5	0.55
13,135.0	89.96	340.48	6,700.1	6,152.0	-1,514.5	6,302.5	1.89
13,230.0	89.52	339.51	6,700.5	6,241.3	-1,547.0	6,397.5	1.12
13,323.0	91.28	339.78	6,699.9	6,328.5	-1,579.3	6,490.5	1.91
13,417.0	91.63	340.39	6,697.5	6,416.8	-1,611.3	6,584.4	0.75
13,512.0	90.22	340.22	6,696.0	6,506.3	-1,643.4	6,679.4	1.49
13,606.0	89.60	340.66	6,696.1	6,594.8	-1,674.8	6,773.4	0.81
13,700.0	88.29	340.13	6,697.9	6,683.4	-1,706.4	6,867.4	1.50
13,794.0	87.58	339.25	6,701.2	6,771.5	-1,739.0	6,961.3	1.20
13,889.0	87.49	339.34	6,705.3	6,860.2	-1,772.5	7,056.2	0.13
13,983.0	89.43	340.66	6,707.9	6,948.5	-1,804.7	7,150.2	2.50
14,077.0	89.96	341.80	6,708.4	7,037.5	-1,834.9	7,244.2	1.34
14,171.0	89.52	341.62	6,708.8	7,126.8	-1,864.4	7,338.1	0.51
14,265.0	88.46	338.72	6,710.4	7,215.2	-1,896.3	7,432.1	3.28
14,359.0	90.04	339.25	6,711.7	7,302.9	-1,930.0	7,526.1	1.77
14,453.0	89.25	340.66	6,712.3	7,391.2	-1,962.2	7,620.1	1.72
14,547.0	89.96	341.71	6,712.9	7,480.2	-1,992.5	7,714.1	1.35



Company: Antero Resources
Project: Tyler County WV
Site: Weigle / Klondike / Pad
Well: Weigle Unit 1H
Wellbore: Original Wellpath
Design: As Drilled

Local Co-ordinate Reference: Well Weigle Unit 1H
TVD Reference: Weigle Unit 1H GL 1201' + 24' RKB @ 1225.0usft
MD Reference: Weigle Unit 1H GL 1201' + 24' RKB @ 1225.0usft
North Reference: Grid
Survey Calculation Method: Minimum Curvature
Database: Oklahoma District

Survey

MD (usft)	Inc (°)	Azi (azimuth) (°)	TVD (usft)	N/S (usft)	EW (usft)	V. Sec (usft)	DLeg (°/100usft)
14,641.0	89.87	341.71	6,713.0	7,569.4	-2,022.0	7,808.0	0.10
14,735.0	89.96	340.74	6,713.2	7,658.4	-2,052.3	7,902.0	1.04
14,830.0	90.13	341.01	6,713.1	7,748.2	-2,083.4	7,997.0	0.34
14,924.0	90.13	339.69	6,712.9	7,836.7	-2,115.0	8,091.0	1.40
15,018.0	89.87	338.81	6,712.9	7,924.6	-2,148.3	8,185.0	0.98
15,112.0	90.04	338.20	6,713.0	8,012.1	-2,182.7	8,278.9	0.67
15,206.0	88.99	338.81	6,713.8	8,099.5	-2,217.2	8,372.9	1.29
15,300.0	89.78	340.48	6,714.8	8,187.7	-2,249.9	8,466.9	1.97
15,394.0	89.96	339.78	6,715.0	8,276.1	-2,281.8	8,560.9	0.77
15,488.0	89.70	339.84	6,715.3	8,364.3	-2,314.3	8,654.9	0.28
15,581.0	89.78	339.16	6,715.7	8,451.4	-2,346.8	8,747.9	0.74
15,676.0	90.57	341.27	6,715.4	8,540.8	-2,379.0	8,842.8	2.37
15,770.0	90.48	340.48	6,714.5	8,629.6	-2,409.8	8,936.8	0.85
15,864.0	90.04	339.60	6,714.1	8,717.9	-2,441.9	9,030.8	1.05
15,959.0	89.34	338.20	6,714.6	8,806.6	-2,476.1	9,125.8	1.65
16,053.0	89.52	339.34	6,715.6	8,894.2	-2,510.1	9,219.8	1.23
16,147.0	89.96	339.60	6,716.0	8,982.2	-2,543.1	9,313.8	0.54
16,242.0	89.52	341.18	6,716.4	9,071.7	-2,575.0	9,408.7	1.73
16,336.0	89.78	342.06	6,717.0	9,160.9	-2,604.6	9,502.7	0.98
16,430.0	90.48	342.41	6,716.8	9,250.4	-2,633.3	9,596.7	0.83
16,524.0	90.48	341.62	6,716.0	9,339.8	-2,662.3	9,690.6	0.84
16,618.0	90.31	340.74	6,715.3	9,428.8	-2,692.6	9,784.6	0.95
16,712.0	89.96	339.60	6,715.1	9,517.2	-2,724.5	9,878.6	1.27
16,807.0	89.60	338.81	6,715.5	9,606.0	-2,758.2	9,973.6	0.91
16,901.0	89.78	338.11	6,716.0	9,693.5	-2,792.8	10,067.5	0.77
16,995.0	89.78	338.81	6,716.3	9,780.9	-2,827.3	10,161.5	0.74
17,089.0	88.90	340.74	6,717.4	9,869.1	-2,859.8	10,255.5	2.26
17,183.0	89.60	342.41	6,718.7	9,958.3	-2,889.5	10,349.4	1.93
17,277.0	89.60	341.97	6,719.3	10,047.8	-2,918.2	10,443.4	0.47
17,371.0	91.10	342.33	6,718.7	10,137.2	-2,947.0	10,537.3	1.64
17,465.0	91.54	342.33	6,716.6	10,226.8	-2,975.5	10,631.2	0.47
17,559.0	90.34	341.16	6,715.0	10,316.0	-3,005.0	10,725.2	1.78
17,653.0	90.57	341.71	6,714.3	10,405.1	-3,034.9	10,819.2	0.63
17,777.0	90.92	341.62	6,712.7	10,522.8	-3,073.9	10,943.1	0.29
17,829.0	90.50	340.30	6,712.0	10,572.0	-3,090.9	10,995.1	2.66

AUG 17 2015



Company: Antero Resources
Project: Tyler County WV
Site: Weigle / Klondike / Pad
Well: Weigle Unit 1H
Wellbore: Original Wellpath
Design: As Drilled

Local Co-ordinate Reference: Well Weigle Unit 1H
TVD Reference: Weigle Unit 1H GL 1201' + 24' RKB @ 1225.0usft
MD Reference: Weigle Unit 1H GL 1201' + 24' RKB @ 1225.0usft
North Reference: Grid
Survey Calculation Method: Minimum Curvature
Database: Oklahoma District

Design Annotations

Measured Depth (usft)	Vertical Depth (usft)	Local Coordinates		Comment
		+N-S (usft)	+E-W (usft)	
6,361.0	6,336.0	21.9	83.5	Sycamore
6,654.0	6,513.6	109.9	294.6	Middlesex
6,886.0	6,613.7	270.0	426.9	Burkett
6,959.0	6,642.3	331.7	453.2	Tully
7,100.0	6,683.0	463.5	478.7	Marcellus

Checked By: _____ Approved By: _____ Date: _____