

State of West Virginia
Department of Environmental Protection - Office of Oil and Gas
Well Operator's Report of Well Work

API 47-95-02153 County Tyler District Lincoln
Quad Paden City Pad Name Wells Meckley Unit Field/Pool Name Middlebourne
Farm name Velma L. Wells Well Number # 1403 MH

Operator (as registered with the OOG) Triad Hunter, LLC
Address 122 W. John Carpenter City Irving State Texas Zip 75039
Freeway, suite 300

As Drilled location NAD 83/UTM Attach an as-drilled plat, profile view, and deviation survey
Top hole Northing 380238.5 Easting 1567241.2
Landing Point of Curve Northing 380497.22 Easting 1567073.28
Bottom Hole Northing 372991.89 Easting 1569681.28

Elevation (ft) 985' GL Type of Well New Existing Type of Report Interim Final

Permit Type Deviated Horizontal Horizontal 6A Vertical Depth Type Deep Shallow

Type of Operation Convert Deepen Drill Plug Back Redrilling Rework Stimulate

Well Type Brine Disposal CBM Gas Oil Secondary Recovery Solution Mining Storage Other

Type of Completion Single Multiple Fluids Produced Brine Gas NGL Oil Other

Drilled with Cable Rotary

Drilling Media Surface hole Air Mud Fresh Water Intermediate hole Air Mud Fresh Water Brine

Production hole Air Mud Fresh Water Brine

Mud Type(s) and Additive(s)
Synthetic Mud System

*Drilling Re-work 12/5/17 - 12/14/17
Date permit issued 5/21/2014 Date drilling commenced 12/26/2014 Date drilling ceased 12/30/2014 PH
Date completion activities began 2/24/18 Date completion activities ceased 3/12/18
Verbal plugging (Y/N) N Date permission granted N/A Granted by N/A

Please note: Operator is required to submit a plugging application within 5 days of verbal permission to plug

Freshwater depth(s) ft Surface - 300' Open mine(s) (Y/N) depths N/A

Salt water depth(s) ft @ 1200' Void(s) encountered (Y/N) depths N/A

Coal depth(s) ft 600' - 700' Cavern(s) encountered (Y/N) depths N/A

Is coal being mined in area (Y/N) N

RECEIVED
Office of Oil and Gas

AUG 20 2018

Reviewed by: WV Department of
Environmental Protection
DAB

Reviewed

[Handwritten signature]

WR-35
Rev. 8/23/13

API 47-095 - 02153 Farm name Velma L. Wells Well number # 1403 MH

| CASING STRINGS | Hole Size | Casing Size | Depth | New or Used | Grade wt/ft | Basket Depth(s) | Did cement circulate (Y/N) * Provide details below* |
|---------------------------|-----------|-------------|--------|-------------|-------------|-----------------|--|
| Conductor | 24" | 20" | 100' | New | J-55 94# | - 0 - | yes |
| Surface | 17 1/2" | 13 3/8" | 418.5' | New | J-55 54.5# | - 0 - | 23 bbl. cement returns |
| Coal | | | | | | | |
| Intermediate 1 | 12 1/4" | 9 5/8" | 2,877' | New | J-55 36# | - 0 - | 48 bbl. cement returns |
| Intermediate 2 | | | | | | | |
| Intermediate 3 | | | | | | | |
| Production | 8 1/2" | 5 1/2" | 14,766 | NEW | P-110 20# | - 0 - | 80 bbl returns |
| Tubing | | 2 7/8" | 6,575 | NEW | L-80 6.4# | - 0 - | |
| Packer type and depth set | | | | | | | |

Comment Details _____

| CEMENT DATA | Class/Type of Cement | Number of Sacks | Slurry wt (ppg) | Yield (ft ³ /sks) | Volume (ft ³) | Cement Top (MD) | WOC (hrs) |
|----------------|----------------------|-----------------|-----------------|------------------------------|---------------------------|-----------------|-----------|
| Conductor | Class A | 185 | 15.6 | 1.18 | 218.3 | Surface | 24+ |
| Surface | HALCEM (Class A) | 380 | 15.6 | 1.19 | 452.2 | Surface | 12+ |
| Coal | | | | | | | |
| Intermediate 1 | HALCEM (Class A) | 1,050 | 15.6 | 1.19 | 1,249.5 | Surface | 24+ |
| Intermediate 2 | | | | | | | |
| Intermediate 3 | | | | | | | |
| Production | lead(H)/tail(H) | 590/2120 | 15/15.2 | 1.46/1.34 | 801.4/2840.8 | Surface | 24+ |
| Tubing | | | | | | | |

Drillers TD (ft) MD=14,771 TVD=6280 Loggers TD (ft) N/A NO. OPEN HOLE LOGS
 Deepest formation penetrated Marcellus shale Plug back to (ft) N/A
 Plug back procedure N/A

Kick off depth (ft) MD=6054 TVD=5796

Check all wireline logs run caliper density deviated/directional induction
 neutron resistivity gamma ray temperature sonic

Well cored Yes No Conventional Sidewall Were cuttings collected Yes No

DESCRIBE THE CENTRALIZER PLACEMENT USED FOR EACH CASING STRING _____

Surface Casing 20" - 2 centralizers

Intermediate Casing 13 3/8" - 7 centralizers

Production casing 5 1/2" 98 centralizers

WAS WELL COMPLETED AS SHOT HOLE Yes No DETAILS _____

WAS WELL COMPLETED OPEN HOLE? Yes No DETAILS _____

WERE TRACERS USED Yes No TYPE OF TRACER(S) USED _____

Wells Meckley 1403 Formation Tops

| Formation | TVD= MD | Rock Type/ record QTY/Type of Fluid (Fresh water, brine, oil, gas, H2S, Ect) |
|----------------------|---------|--|
| Water zone | 980 | water |
| Salt Sand | 1,563 | Sandstone |
| Maxton Sand | 1,687 | Sandstone |
| Greenbrier Limestone | 1,773 | Limestone |
| Keener Sand | 1,811 | Sandstone |
| Big Injun | 1,822 | Sandstone |
| Squaw Sand | 2,020 | Sandstone |
| Weir Sand | 2,228 | Sandstone |
| Berea Sandstone | 2,398 | Sandstone |
| Gordon Stray Sand | 2,729 | Sandstone |
| Gordon | 2,752 | Sandstone |
| Fifth Sand | 2,840 | Sandstone |
| Warren | 3,375 | Sandstone |
| Benson | 4,845 | Sandstone |
| Tully LS | 6,147 | Limestone |
| Marcellus Shale | 6,169 | Shale / gas |
| TARGET | 6,194 | Shale / gas |
| Onondaga LS | 6,223 | Limestone |

RECEIVED
Office of Oil and Gas
AUG 20 2018
WV Department of
Environmental Protection

ACTUAL WELLPATH REPORT (CSV version)

Prepared by Baker Hughes
Software System: WellArchitect® 5.1

REFERENCE WELLPATH IDENTIFICATION

Operator BLUE RIDGE MOUNTAIN RESOURCES
Area Tyler County, WV
Field Tyler
Facility Meckley Pad
Slot Slot 006
Wellbore Wells Meckley 1403MH
Wellpath Wells Meckley 1403MHAWP Proj: 14771
Sidetrack (none)

REPORT SETUP INFORMATION

Projection NAD83 / Lambert West Virginia SP, Northern Zone (4701), US feet
North Refe Grid
Scale 0.999942
Convergen 0.91° West
Software S WellArchitect® 5.1
User Delisset
Report Gen 10/Jan/2018 at 10:26
DataBase: WA_MPL_EasternUS_Defn/ev1130.xml

Table with 7 columns: WellPath, Local East, Local East, Easting, Northing, Latitude, Longitude. Rows include Slot Locati, Facility Ref, and Field Refer.

WELLPATH DATUM

Calculator Minimum curvature
Horizontal Slot
Vertical Re H&P 371 (RKB)
MD Refere H&P 371 (RKB)
Field Vertic Mean Sea Level
H&P 371 (f 27.00ft)
H&P 371 (f 985.00ft)
H&P 371 (f 27.00ft)
Section Chl N 0.00, E 0.00 ft
Section Azi 159.99°

WELLPATH DATA f = interpolated/extrapolated station

Main data table with columns: MD, Inclination, Azimuth, TVD, Vert Sect, North, East, Grid East, Grid North, Latitude, Longitude, Closure Dn, Closure Du, CLS, Build Rate, Turn Rate, Comments. Contains 49 rows of well path data.

RECEIVED
Office of Oil and Gas
AUG 20 2018
WV Department of Environmental Protection

| | | | | | | | | | | | | | | | |
|-------|-------|--------|---------|---------|----------|---------|---------|----------|------------|------------|---------|---------|-------|--------|--------|
| 5017 | 44.63 | 342.03 | 4928.35 | -395.13 | 331.72 | -243.84 | 1566997 | 380570.2 | 39°32'10.0 | 60°55'25.1 | 411.7 | 323.68 | 10.89 | 9.99 | 6.79 |
| 5111 | 45.23 | 344.97 | 4994.9 | -461.38 | 395.36 | -262.66 | 1566979 | 380633.8 | 39°32'10.7 | 60°55'25.4 | 474.66 | 326.402 | 2.26 | 0.64 | 3.07 |
| 5205 | 45.09 | 345.25 | 5061.19 | -527.76 | 459.78 | -279.79 | 1566961 | 380698.3 | 39°32'11.3 | 60°55'25.6 | 538.22 | 328.679 | 0.26 | -0.15 | 0.3 |
| 5300 | 45.14 | 340.98 | 5128.24 | -594.94 | 524.16 | -299.33 | 1566942 | 380762.6 | 39°32'11.9 | 60°55'25.9 | 603.6 | 330.271 | 3.18 | 0.05 | -4.49 |
| 5394 | 45.27 | 338.61 | 5194.48 | -661.64 | 586.75 | -322.36 | 1566923 | 380825.2 | 39°32'12.5 | 60°55'26.2 | 669.47 | 331.215 | 1.79 | 0.14 | -2.52 |
| 5488 | 39.62 | 341.26 | 5263.82 | -725.04 | 646.28 | -344.19 | 1566904 | 380884.7 | 39°32'13.1 | 60°55'26.5 | 732.22 | 331.961 | 6.3 | -6.01 | 2.82 |
| 5582 | 31.8 | 341.74 | 5340.09 | -793.84 | 698.26 | -361.61 | 1566885 | 380936.3 | 39°32'13.6 | 60°55'26.7 | 798.34 | 332.622 | 8.32 | -8.32 | 0.51 |
| 5677 | 21.59 | 337.54 | 5424.85 | -822.44 | 738.29 | -376.17 | 1566865 | 380976.8 | 39°32'14.0 | 60°55'26.9 | 828.6 | 333.001 | 10.92 | -10.75 | -4.42 |
| 5771 | 10.69 | 338.55 | 5515.01 | -843.51 | 762.46 | -385.99 | 1566855 | 381000.9 | 39°32'14.3 | 60°55'27.0 | 854.6 | 333.149 | 11.6 | -11.6 | 1.07 |
| 5865 | 3.91 | 357.2 | 5608.21 | -860.3 | 773.79 | -389.34 | 1566852 | 381012.2 | 39°32'14.4 | 60°55'27.1 | 866.22 | 333.29 | 7.55 | -7.21 | 19.84 |
| 5960 | 5.49 | 125.17 | 5703.05 | -859.67 | 774.41 | -385.78 | 1566855 | 381012.9 | 39°32'14.4 | 60°55'27.0 | 865.18 | 333.519 | 8.92 | 1.66 | 134.71 |
| 6054 | 13.52 | 138.24 | 5795.69 | -845.75 | 763.6 | -374.77 | 1566866 | 381002.1 | 39°32'14.3 | 60°55'26.9 | 850.61 | 333.859 | 8.79 | 3.54 | 13.9 |
| 6148 | 22.41 | 144.43 | 5885.03 | -818.22 | 740.79 | -356.99 | 1566884 | 380979.2 | 39°32'14.1 | 60°55'26.7 | 822.32 | 334.27 | 9.66 | 9.46 | 6.59 |
| 6242 | 31.74 | 151.58 | 5968.66 | -776.4 | 704.38 | -334.74 | 1566906 | 380942.8 | 39°32'13.7 | 60°55'26.4 | 779.87 | 334.581 | 10.5 | 9.93 | 7.61 |
| 6336 | 42.05 | 154.48 | 6043.74 | -720.45 | 654.08 | -309.34 | 1566932 | 380925.5 | 39°32'13.2 | 60°55'26.0 | 723.54 | 334.689 | 11.12 | 10.97 | 3.09 |
| 6431 | 53.52 | 157.33 | 6107.47 | -650.39 | 589.91 | -260.82 | 1566960 | 380828.4 | 39°32'12.6 | 60°55'25.7 | 653.34 | 334.544 | 12.27 | 12.07 | 3 |
| 6525 | 62.31 | 160.33 | 6157.36 | -570.85 | 515.69 | -251.18 | 1566989 | 380754.2 | 39°32'11.8 | 60°55'25.3 | 574.05 | 333.941 | 9.73 | 9.15 | 3.19 |
| 6619 | 72.12 | 161.39 | 6193.72 | -484.3 | 433.91 | -223.83 | 1567017 | 380672.4 | 39°32'11.0 | 60°55'24.9 | 488.24 | 332.713 | 10.49 | 10.44 | 1.13 |
| 6713 | 82.25 | 164.26 | 6214.55 | -392.89 | 346.45 | -196.84 | 1567044 | 380584.9 | 39°32'10.2 | 60°55'24.5 | 398.46 | 330.396 | 11.18 | 10.78 | 3.05 |
| 6807 | 89.11 | 165.18 | 6221.62 | -299.53 | 256.08 | -172.16 | 1567069 | 380494.6 | 39°32'09.3 | 60°55'24.2 | 308.57 | 326.087 | 7.36 | 7.3 | 0.98 |
| 6901 | 89.02 | 166.52 | 6223.16 | -206.04 | 164.95 | -149.19 | 1567092 | 380403.4 | 39°32'08.4 | 60°55'23.9 | 222.41 | 317.873 | 1.43 | -0.1 | 1.43 |
| 6995 | 87.66 | 164.45 | 6225.88 | -112.52 | 73.99 | -125.64 | 1567116 | 380312.5 | 39°32'07.5 | 60°55'23.6 | 145.81 | 300.496 | 2.63 | -1.45 | -2.2 |
| 7090 | 87.04 | 156.8 | 6230.28 | -17.7 | -15.46 | -94.18 | 1567147 | 380223 | 39°32'06.6 | 60°55'23.1 | 95.44 | 260.676 | 8.07 | -0.65 | -8.05 |
| 7184 | 86.55 | 155.16 | 6235.54 | 75.92 | -101.19 | -55.98 | 1567185 | 380137.3 | 39°32'05.8 | 60°55'22.6 | 115.64 | 208.953 | 1.82 | -0.52 | -1.74 |
| 7278 | 88.03 | 156.15 | 6239.98 | 169.55 | -186.73 | -17.27 | 1567224 | 380051.8 | 39°32'04.9 | 60°55'22.1 | 187.53 | 185.286 | 1.89 | 1.57 | 1.05 |
| 7373 | 88.09 | 157.68 | 6243.2 | 264.35 | -274.07 | 19.95 | 1567261 | 379964.5 | 39°32'04.1 | 60°55'21.6 | 274.79 | 175.836 | 1.61 | 0.06 | 1.61 |
| 7466 | 90.06 | 155.7 | 6244.7 | 357.18 | -359.46 | 56.74 | 1567298 | 379879.1 | 39°32'03.2 | 60°55'21.2 | 363.91 | 171.029 | 3 | 2.12 | -2.13 |
| 7560 | 90.4 | 156.68 | 6244.32 | 450.97 | -445.46 | 94.69 | 1567336 | 379793.1 | 39°32'02.4 | 60°55'20.7 | 455.41 | 167.999 | 1.1 | 0.36 | 1.04 |
| 7654 | 90.4 | 163.63 | 6243.66 | 544.91 | -533.82 | 126.58 | 1567368 | 379704.7 | 39°32'01.5 | 60°55'20.2 | 548.62 | 166.66 | 7.39 | 0 | 7.39 |
| 7748 | 89.94 | 162.03 | 6243.38 | 638.79 | -623.62 | 154.33 | 1567396 | 379614.9 | 39°32'00.7 | 60°55'19.9 | 642.44 | 166.1 | 1.77 | -0.49 | -1.7 |
| 7842 | 90.09 | 159.74 | 6243.36 | 732.77 | -712.44 | 185.11 | 1567426 | 379526.1 | 39°31'59.8 | 60°55'19.4 | 736.09 | 165.435 | 2.44 | 0.16 | -2.44 |
| 7937 | 89.91 | 161.27 | 6243.36 | 827.76 | -801.99 | 216.81 | 1567458 | 379436.6 | 39°31'58.9 | 60°55'19.0 | 830.78 | 164.872 | 1.62 | -0.19 | 1.61 |
| 8031 | 89.94 | 165.28 | 6243.48 | 921.59 | -891.99 | 243.86 | 1567485 | 379346.6 | 39°31'58.0 | 60°55'18.7 | 924.73 | 164.71 | 4.27 | 0.13 | 4.27 |
| 8125 | 90 | 166.3 | 6243.53 | 1015.11 | -983.11 | 266.93 | 1567508 | 379255.4 | 39°31'57.1 | 60°55'18.3 | 1018.71 | 164.809 | 1.09 | 0.06 | 1.09 |
| 8219 | 89.88 | 161.74 | 6243.63 | 1108.85 | -1073.46 | 292.81 | 1567534 | 379165.1 | 39°31'56.2 | 60°55'18.0 | 1112.68 | 164.743 | 4.85 | -0.13 | -4.85 |
| 8314 | 90.8 | 154.93 | 6243.07 | 1203.75 | -1161.69 | 327.86 | 1567569 | 379076.9 | 39°31'55.4 | 60°55'17.5 | 1207.07 | 164.24 | 7.23 | 0.97 | -7.17 |
| 8408 | 90.4 | 148.62 | 6242.08 | 1296.73 | -1244.47 | 372.79 | 1567613 | 378984.4 | 39°31'54.6 | 60°55'16.9 | 1298.96 | 163.345 | 6.73 | -0.43 | -6.71 |
| 8502 | 90.89 | 152.59 | 6241.02 | 1389.45 | -1326.35 | 418.41 | 1567660 | 378892.2 | 39°31'53.7 | 60°55'16.3 | 1390.78 | 162.491 | 4.26 | 0.57 | 4.22 |
| 8596 | 90.92 | 155.83 | 6239.54 | 1482.95 | -1410.96 | 459.3 | 1567700 | 378807.6 | 39°31'52.9 | 60°55'15.8 | 1483.83 | 161.969 | 3.45 | 0.03 | 3.45 |
| 8691 | 90.25 | 156.57 | 6238.57 | 1577.74 | -1497.88 | 497.63 | 1567739 | 378740.7 | 39°31'52.1 | 60°55'15.3 | 1578.38 | 161.622 | 1.05 | -0.71 | 0.78 |
| 8785 | 90.06 | 161.36 | 6238.31 | 1671.69 | -1585.59 | 531.36 | 1567773 | 378653.3 | 39°31'51.2 | 60°55'14.8 | 1672.25 | 161.473 | 5.1 | -0.2 | 5.1 |
| 8879 | 89.38 | 164.13 | 6238.77 | 1765.57 | -1675.35 | 559.24 | 1567800 | 378563.3 | 39°31'50.3 | 60°55'14.5 | 1766.22 | 161.541 | 3.03 | -0.72 | 2.95 |
| 8973 | 88.98 | 162.83 | 6240.12 | 1859.39 | -1765.45 | 585.97 | 1567827 | 378473.2 | 39°31'49.4 | 60°55'14.1 | 1860.16 | 161.639 | 1.45 | -0.43 | -1.38 |
| 9067 | 88.71 | 162.99 | 6242.01 | 1953.25 | -1855.79 | 613.59 | 1567855 | 378383.3 | 39°31'48.6 | 60°55'13.7 | 1954.12 | 161.7 | 0.33 | -0.29 | 0.17 |
| 9161 | 88.52 | 166.61 | 6244.28 | 2046.87 | -1945.95 | 638.22 | 1567879 | 378292.7 | 39°31'47.7 | 60°55'13.4 | 2047.94 | 161.842 | 3.86 | -0.2 | 3.85 |
| 9256 | 88.52 | 171.72 | 6246.74 | 2140.59 | -2039.2 | 656.07 | 1567897 | 378199.4 | 39°31'46.7 | 60°55'13.2 | 2142.14 | 162.166 | 5.38 | 0 | 5.38 |
| 9350 | 88.46 | 166.4 | 6249.22 | 2233.35 | -2131.43 | 673.89 | 1567915 | 378107.2 | 39°31'45.8 | 60°55'12.9 | 2235.42 | 162.455 | 5.66 | -0.06 | -5.66 |
| 9444 | 90.03 | 161.44 | 6250.46 | 2327.09 | -2221.71 | 699.02 | 1567941 | 378016.9 | 39°31'44.9 | 60°55'12.6 | 2329.35 | 162.514 | 5.53 | 1.67 | -5.28 |
| 9539 | 89.57 | 157.29 | 6250.79 | 2422.07 | -2310.59 | 733.39 | 1567975 | 377928.3 | 39°31'44.1 | 60°55'12.1 | 2424.19 | 162.39 | 4.4 | -0.48 | -4.37 |
| 9633 | 89.69 | 154.09 | 6251.4 | 2515.79 | -2396.25 | 772.08 | 1568013 | 377842.4 | 39°31'43.2 | 60°55'11.6 | 2517.56 | 162.141 | 3.41 | 0.13 | -3.4 |
| 9727 | 89.6 | 155.69 | 6251.98 | 2609.41 | -2481.36 | 811.97 | 1568053 | 377757.3 | 39°31'42.4 | 60°55'11.1 | 2610.83 | 161.88 | 1.7 | -0.1 | 1.7 |
| 9821 | 89.17 | 156.21 | 6252.99 | 2703.17 | -2567.19 | 850.28 | 1568091 | 377671.5 | 39°31'41.6 | 60°55'10.6 | 2704.34 | 161.675 | 0.72 | -0.46 | 0.55 |
| 9916 | 89.29 | 158.12 | 6254.27 | 2798.04 | -2654.74 | 887.14 | 1568128 | 377583.9 | 39°31'40.7 | 60°55'10.1 | 2799.04 | 161.522 | 2.01 | 0.13 | 2.01 |
| 10010 | 89.32 | 160.09 | 6255.41 | 2892.02 | -2742.54 | 920.66 | 1568162 | 377496.1 | 39°31'39.8 | 60°55'09.6 | 2892.95 | 161.443 | 2.1 | 0.03 | 2.1 |
| 10104 | 89.38 | 161.91 | 6256.47 | 2985.99 | -2831.41 | 951.26 | 1568192 | 377407.3 | 39°31'39.0 | 60°55'09.2 | 2986.94 | 161.429 | 1.94 | 0.06 | 1.94 |
| 10199 | 90.59 | 162.36 | 6256.51 | 3080.93 | -2921.83 | 980.4 | 1568222 | 377316.9 | 39°31'38.1 | 60°55'08.8 | 3081.93 | 161.451 | 1.35 | 1.16 | 0.47 |
| 10293 | 90.18 | 162.36 | 6255.88 | 3174.84 | -3011.41 | 1008.89 | 1568250 | 377227.3 | 39°31'37.2 | 60°55'08.5 | 3175.91 | 161.478 | 0.43 | -0.43 | 0 |
| 10387 | 90 | 158.89 | 6255.73 | 3268.82 | -3100.07 | 1040.07 | 1568281 | 377138.6 | 39°31'36.3 | 60°55'08.1 | 3269.89 | 161.453 | 3.7 | -0.19 | -3.69 |
| 10482 | 90.12 | 156.86 | 6255.63 | 3363.75 | -3188.07 | 1075.85 | 1568317 | 377050.6 | 39°31'35.5 | 60°55'07.6 | 3364.7 | 161.353 | 2.14 | 0.13 | -2.14 |
| 10576 | 90.03 | 157.18 | 6255.51 | 3457.63 | -3274.61 | 1112.54 | 1568354 | 376964.1 | 39°31'34.6 | 60°55'07.1 | 3458.44 | 161.235 | 0.35 | -0.1 | 0.34 |
| 10670 | 90.15 | 161.28 | 6255.36 | 3551.6 | -3362.48 | 1145.87 | 1568387 | 376876.2 | 39°31'33.7 | 60°55'06.6 | 3552.37 | 161.182 | 4.36 | 0.13 | 4.36 |
| 10764 | 89.82 | 159.39 | 6255.39 | 3645.59 | -3451 | 1177.5 | 1568419 | 376787.7 | 39°31'32.9 | 60°55'06.2 | 3646.35 | 161.16 | 2.04 | -0.35 | -2.01 |
| 10858 | 89.88 | 158.1 | 6255.63 | 3739.57 | -3538.6 | 1211.58 | 1568453 | 376700.1 | 39°31'32.0 | 60°55'05.8 | 3740.27 | 161.099 | 1.37 | 0.06 | -1.37 |
| 10952 | 89.94 | 159.65 | 6255.78 | 3833.55 | -3626.28 | 1245.45 | 1568487 | 376612.4 | 39°31'31.1 | 60°55'05.3 | 3834.2 | 161.045 | 1.65 | 0.06 | 1.65 |
| 11047 | 89.69 | 160.15 | 6256.09 | 3928.55 | -3715.49 | 1278.1 | 1568519 | 376523.2 | 39°31'30.3 | 60°55'04.9 | 3929.18 | 161.017 | 0.59 | -0.26 | 0.53 |
| 11141 | 89.6 | 162.65 | 6256.67 | 4022.51 | -3804.57 | 1308.03 | 1568549 | 376434.2 | 39°31'29.4 | 60°55'04.5 | 4023.17 | 161.026 | 2.66 | -0.1 | 2.66 |
| 11235 | 89.75 | 163.21 | 6257.2 | 4116.38 | -3894.43 | | | | | | | | | | |

| | | | | | | | | | | | | | | | |
|-------|-------|--------|---------|---------|----------|---------|---------|----------|------------|------------|---------|---------|------|-------|------------------------------|
| 14345 | 89.94 | 159.25 | 6273.4 | 7220.67 | -6814.67 | 2388.71 | 1569630 | 373424.2 | 39°30'59.8 | 80°54'50.1 | 7221.2 | 160.683 | 3.49 | -0.13 | -3.49 |
| 14440 | 88.89 | 153.41 | 6274.37 | 7315.43 | -6901.64 | 2426.83 | 1569668 | 373337.3 | 39°30'59.0 | 80°54'49.6 | 7315.88 | 160.627 | 6.25 | -1.11 | -6.15 |
| 14534 | 88.77 | 156.54 | 6276.29 | 7409.04 | -6986.79 | 2466.58 | 1569708 | 373252.1 | 39°30'58.1 | 80°54'49.1 | 7409.4 | 160.555 | 3.33 | -0.13 | 3.33 |
| 14629 | 88.71 | 159.48 | 6278.38 | 7503.95 | -7074.84 | 2502.14 | 1569743 | 373164.1 | 39°30'57.3 | 80°54'48.6 | 7504.27 | 160.523 | 3.09 | -0.06 | 3.09 |
| 14723 | 88.98 | 158.06 | 6280.28 | 7597.9 | -7162.44 | 2536.17 | 1569777 | 373076.5 | 39°30'56.4 | 80°54'48.1 | 7598.21 | 160.501 | 1.54 | 0.29 | -1.51 |
| 14771 | 88.98 | 158.06 | 6281.13 | 7645.87 | -7206.96 | 2554.1 | 1569795 | 373032 | 39°30'56.0 | 80°54'47.9 | 7646.15 | 160.486 | 0 | 0 | 0 Projected MD at TD: 14771' |

HOLE AND CASING SECTIONS Ref Wellbore: Wells Meckley 1403MH AWB Ref Wellpath: Wells Meckley 1403MH AWP Proj: 14771'

| String/Case | Start MD | End MD | Interval | Start TVD | End TVD | Start N/S | Start E/W | End N/S | End E/W |
|-------------|----------|---------|----------|-----------|---------|-----------|-----------|----------|---------|
| | [ft] | [ft] | [ft] | [ft] | [ft] | [ft] | [ft] | [ft] | [ft] |
| 20in Conds | 27 | 100 | 73 | 27 | 100 | 0 | 0 | -0.09 | 0.43 |
| 17.5in Ope | 100 | 400.1 | 300.1 | 100 | 400.09 | -0.09 | 0.43 | -0.63 | 2.3 |
| 13.375in C | 27 | 400.1 | 373.1 | 27 | 400.09 | 0 | 0 | -0.63 | 2.3 |
| 12.25in Op | 400.1 | 2882.55 | 2482.45 | 400.09 | 2880 | -0.63 | 2.3 | -67.76 | 10.24 |
| 9.625in Ca | 27 | 2882.55 | 2855.55 | 27 | 2880 | 0 | 0 | -67.76 | 10.24 |
| 8.5in Open | 2882.55 | 14771 | 11888.45 | 2880 | 6281.13 | -67.76 | 10.24 | -7206.96 | 2554.1 |
| 5.5in Casin | 27 | 14771 | 14744 | 27 | 6281.13 | 0 | 0 | -7206.96 | 2554.1 |

T A R G E T S

| Name | TVD | North | East | Grid East | Grid North | Latitude | Longitude | Shape | Comment |
|----------|------|----------|---------|-----------|------------|------------|------------|-------|---------|
| | [ft] | [ft] | [ft] | [ft] | [US ft] | [US ft] | | | |
| 1403MH B | 6222 | -7212.74 | 2538.3 | 1569779 | 373026.2 | 39°30'55.9 | 80°54'48.1 | point | |
| 1403MH U | 6222 | 280.99 | -190.67 | 1567051 | 380519.5 | 39°32'09.5 | 80°55'24.4 | point | |

WELLPATH COMPOSITION Ref Wellbore: Wells Meckley 1403MH AWB Ref Wellpath: Wells Meckley 1403MH AWP Proj: 14771'

| Log Name/ | Start MD | End MD | Pos Unc | Model |
|------------|----------|--------|---------|----------------------------|
| | [ft] | [ft] | | |
| 03_VES Gy | 27 | 4400 | | VESS GyroFlex v4 |
| 04_BH AT r | 4400 | 14723 | | BHI AutoTrak Curve (Short) |
| Projection | 14723 | 14771 | | Blind Drilling (std) |

C O M M E N T S

Wellpath general comments

API: 47-095-02153-0000
 BHI Job #: 8906038
 Rig: H&P 371
 Duration: 12.05.2017 - 12.13.2017
 VES Gyro <B-1/2> (100'-4400')
 BHI AT Curve <B-1/2> (4400')(4450'-14723')
 Projected MD at TD: 14771'

WELLS MECKLEY 1403 (AS-DRILLED)

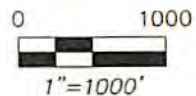
02/15/2019

WV NORTH



LEGEND

- ⊕ TOPO MAP POINT
- ⊗ EXISTING WELLS
- ⊙ PRE-29 WELLS
- - - PARCEL LINES
- ⊙ PROPOSED WELL
- ⊙ WATER WELL
- ROAD
- STREAM



SURFACE LOC.
UTM 17-NAD 83 METERS
N: 4376177.54'
E: 5066036.18'
NAD 83
LAT: 39.53523306
LON: 80.92277736

LANDING POINT LOC.
UTM 17-NAD 83 METERS
N: 4378254.93'
E: 508982.42'
NAD 83
LAT: 39.53592863
LON: 80.92340213

BOTTOM HOLE LOC.
UTM 17-NAD 83 METERS
N: 4373994.92'
E: 507450.95'
NAD 83
LAT: 39.51555965
LON: 80.91332058

WELLS MECKLEY MINERAL ROYALTY OWNERS DETAIL

| TAXMAP/PARCEL NUMBER | MINERAL ROYALTY OWNERS | ACRES | TOT. UNIT |
|----------------------|-----------------------------------|--------|-----------|
| 9/20 | ARC APPALACHIAN MINERALS LLC | 9.97 | ACRES |
| 9/20 | WACO OIL & GAS, INC | 75.29 | ACRES |
| 9/22 | STAN T. & JANET L. CLINE | 8.9 | ACRES |
| 9/22 | RUTH B. THOMAS ESTATE ET AL. | 2.34 | ACRES |
| 9/22 | RUTH B. THOMAS ESTATE ET AL. | 3.34 | ACRES |
| 9/23 | JANET W. & HELEN M. THOMAS ET AL. | 2.23 | ACRES |
| 9/23 | RONALD E. & NANCY L. REED | 1.05 | ACRES |
| 9/24 | WILBRED A. REED | 0.711 | ACRES |
| 9/25 | RICHARD & JUDITH BOWEN | 2.0 | ACRES |
| 9/26 | BETTY & KENNETH MOREHEAD | 2 | ACRES |
| 9/26 | BETTY & KENNETH MOREHEAD | 20.89 | ACRES |
| 9/26 | BETTY & KENNETH MOREHEAD | 10.41 | ACRES |
| 9/26 | BETTY & KENNETH MOREHEAD | 0.26 | ACRES |
| 9/26 | BETTY & KENNETH MOREHEAD | 1.89 | ACRES |
| 9/27 | CHARLES RAY JONES | 0.593 | ACRES |
| 9/27 | RONALD EUGENE BOER | 0.505 | ACRES |
| 9/28 | CHARLES RAY JONES | 0.25 | ACRES |
| 9/28 | RONALD EUGENE BOER | 0.25 | ACRES |
| 9/28 | CHARLES RAY JONES | 0.16 | ACRES |
| 9/28 | RONALD EUGENE BOER | 0.16 | ACRES |
| 9/28 | CHARLES RAY JONES | 0.615 | ACRES |
| 9/28 | RONALD EUGENE BOER | 0.615 | ACRES |
| 9/28 | CHARLES RAY JONES | 0.066 | ACRES |
| 9/28 | RONALD EUGENE BOER | 0.066 | ACRES |
| 9/28 | ROBERT E. & PATRICIA REED | 1.069 | ACRES |
| 12/25 | TENESA STARCHER BURGETT ET AL. | 3.25 | ACRES |
| 13/2 | BENNER R. STARCHER, II | 3.25 | ACRES |
| 13/2 | DAVID STARCHER | 3.25 | ACRES |
| 13/2 | VELMA LUELLA WELLS | 13.78 | ACRES |
| 13/2 | VELMA LUELLA WELLS | 225.29 | ACRES |
| 13/2 | RAYMOND & REBECCA BARTH | 1.25 | ACRES |
| 13/2 | JANILE FREELAND LANCASTER ET AL. | 18.75 | ACRES |
| 13/2 | LARRY HENTON | 27.5 | ACRES |
| 13/2 | JANILE FREELAND LANCASTER | 18.75 | ACRES |
| 13/2 | TERESA STARCHER BURGETT ET AL. | 1.06 | ACRES |
| 13/2 | BENNER R. STARCHER, II | 1.06 | ACRES |
| 13/2 | DAVID STARCHER | 1.06 | ACRES |
| 13/2 | DAVID STARCHER | 4.03 | ACRES |
| 13/2 | BENNER R. & DEBORAH L. STARCHER | 2.93 | ACRES |
| 13/2 | TENESA STARCHER BURGETT ET AL. | 0.95 | ACRES |
| 13/2 | BENNER R. STARCHER, II | 0.95 | ACRES |
| 13/2 | DAVID STARCHER | 0.95 | ACRES |
| 13/2 | DAVID STARCHER | 2.85 | ACRES |
| 13/2 | WILLIAM H. MEREDITH | 0.561 | ACRES |
| 13/2 | KAY MEREDITH MELNAR | 0.523 | ACRES |
| 13/2 | JAMES ROBERT MEREDITH | 0.261 | ACRES |
| 13/2 | MARY R. LEE | 0.563 | ACRES |
| 13/2 | NETA JANE HALL | 0.563 | ACRES |
| 13/2 | VILLIAM H. MEREDITH | 23.7 | ACRES |
| 13/2 | JAMES ROBERT MEREDITH | 23.7 | ACRES |
| 13/2 | MARY E. & C. C. FLYNN HEIS | 4.01 | ACRES |
| 13/2 | VILLIAM H. MEREDITH | 0.5 | ACRES |
| 13/2 | MARY JANE REEF | 0.053 | ACRES |
| 13/2 | MOTTIE WITA GALLEY | 0.053 | ACRES |
| 13/2 | HAYN OVERBERG, JR | 0.053 | ACRES |
| 13/2 | RONALD E. BRIGHTWELL | 49.47 | ACRES |
| 13/2 | CHARLES W. BRIGHTWELL | 3.0 | ACRES |
| 14/2 | WILBRED A. REED | 46.4 | ACRES |

SURVEY NOTES:

- THIS IS A VOLUNTARILY POOLED UNIT
- THERE ARE NO WATER WELLS OR DEVELOPED SPRINGS WITHIN 500' OF PROPOSED WELL.
- THERE ARE NO EXISTING BUILDINGS WITHIN 625' OF PROPOSED WELL.
- PROPOSED WELL IS GREATER THAN 100' FROM PERENNIAL STREAM, WETLAND, POND, RESERVOIR, OR LAKE.
- THERE ARE NO NATIVE TROUT STREAMS WITHIN 300' OF PROPOSED WELL.
- PROPOSED WELL IS GREATER THAN 1000' FROM SURFACE/GROUNDWATER INTAKE OR PUBLIC WATER SUPPLY.
- IT IS NOT THE INTENTION OF THIS PLAN TO REPRESENT SURVEYED LOCATIONS OF THE SURFACE OR MINERAL PARCELS DEPICTED HEREIN. THE LOCATION OF THE BOUNDARY LINES, AS SHOWN, ARE BASED ON RECORD DEED DESCRIPTIONS, FIELD EVIDENCE FOUND, AND/OR TAX MAP POSITION, UNLESS OTHERWISE NOTED.



Architects • Engineers • Surveyors
11283 EMERSON AVENUE, PARKERSBURG, WV 26104
(304) 464-5305 PICKERING USA.COM

API WELL#: 47-095-02153
STATE COUNTY PERMIT
OPERATOR'S WELL#: WELLS MECKLEY 1403

WELL OPERATOR TRIAD HUNTER, LLC (SUBSIDIARY OF BLUE RIDGE MOUNTAIN RESOURCES) ADDRESS 125 PUTNAM ST. MARRIETTA OH 45750
DESIGNATED AGENT KIMBERLY ARNOLD ADDRESS PO BOX 154 WAVERLY WV 26184 DATE: 3/14/2018



Well: 1403
 Crew: White Fleet
 Location: WV / Tyler
 Formation: Marcellus

Treatment Summary

| Sludge Number | Start Date | Total Clean Vol (bbl) | Avg P/s (psi) | Max P/s (psi) | Avg Rate (bpm) | Max Rate (bpm) | 100 Mesh (lbs) | 40/70 White (lbs) | Proppant Type 3 (lbs) | Proppant Type 4 (lbs) | Acid Volume (gal) | Breakdown (psi) | ISIP (psi) |
|---------------|------------|-----------------------|---------------|---------------|----------------|----------------|----------------|-------------------|-----------------------|-----------------------|-------------------|-----------------|------------|
| 1 | 2/24/2018 | 6,388 | 7,785 | 8,911 | 88.0 | 90.1 | 27,400 | 242,520 | | | 2,276 | n/a | 3,102 |
| 2 | 2/25/2018 | 6,177 | 7,542 | 8,549 | 84.8 | 85.9 | 30,620 | 239,960 | | | 2,272 | 5,494 | 3,416 |
| 3 | 2/25/2018 | 6,033 | 8,071 | 8,896 | 81.4 | 86.4 | 28,000 | 242,940 | | | 2,348 | 5,511 | 3,576 |
| 4 | 2/26/2018 | 1,271 | 8,283 | 9,632 | 28.0 | 55 | 4,000 | | | | 1,919 | 5,336 | 4,137 |
| 5 | 2/27/2018 | 6,197 | 7,958 | 9,039 | 89.1 | 90.5 | 25,500 | 245,060 | | | 3,385 | 5,700 | 3,626 |
| 6 | 3/10/2018 | 7,640 | 9,071 | 9,693 | 36.3 | 65.7 | 4,500 | | | | 32,273 | 5,304 | 5,070 |
| 7 | 3/10/2018 | 6,582 | 8,044 | 8,433 | 85.2 | 87.6 | 30,600 | 245,740 | | | 3,037 | 7,301 | 3,595 |
| 8 | 3/12/2018 | 6,278 | 8,142 | 9,090 | 79.0 | 87 | 26,980 | 243,880 | | | 3,402 | 5,753 | 3,609 |
| 9 | 3/12/2018 | 6,276 | 7,936 | 8,836 | 88.9 | 90.7 | 26,760 | 244,160 | | | 3,599 | 5,235 | 4,621 |
| 10 | 3/12/2018 | 6,097 | 8,052 | 8,954 | 86.1 | 90.5 | 26,940 | 251,260 | | | 2,646 | 5,224 | 4,102 |
| 11 | 3/12/2018 | 6,406 | 8,470 | 9,430 | 58.2 | 72.5 | 26,880 | 244,100 | | | 3,280 | 5,638 | 4,725 |
| 12 | 3/22/2018 | 6,171 | 7,867 | 8,420 | 85.4 | 86.9 | 26,900 | 243,260 | | | 2,192 | 5,891 | 4,248 |
| 13 | 3/22/2018 | 6,130 | 8,056 | 8,627 | 87.3 | 90.3 | 26,780 | 244,540 | | | 2,911 | 5,260 | 4,053 |
| 14 | 3/22/2018 | 6,174 | 8,013 | 8,616 | 87.4 | 90.1 | 26,800 | 249,340 | | | 2,680 | 5,262 | 3,991 |
| 15 | 3/22/2018 | 6,071 | 8,026 | 8,569 | 85.6 | 88.7 | 26,460 | 238,700 | | | 2,428 | 5,524 | 3,970 |
| 16 | 3/23/2018 | 5,958 | 8,225 | 8,640 | 83.0 | 86.8 | 27,120 | 242,760 | | | 2,743 | 5,589 | 4,560 |
| 17 | 3/3/2018 | 6,158 | 8,149 | 8,692 | 86.3 | 90.7 | 27,160 | 239,580 | | | 2,087 | 5,327 | 4,005 |
| 18 | 3/3/2018 | 6,095 | 8,056 | 9,101 | 87.1 | 90.2 | 26,920 | 240,020 | | | 2,029 | 5,319 | 4,058 |
| 19 | 3/3/2018 | 6,073 | 8,015 | 8,272 | 82.1 | 87.9 | 26,960 | 240,280 | | | 2,444 | 5,633 | 4,368 |
| 20 | 3/4/2018 | 6,032 | 8,049 | 9,289 | 78.7 | 88.9 | 27,040 | 243,310 | | | 2,381 | 5,544 | 4,052 |
| 21 | 3/4/2018 | 6,138 | 8,055 | 8,808 | 88.6 | 91 | 26,920 | 243,700 | | | 2,104 | 5,299 | 4,387 |
| 22 | 3/4/2018 | 5,927 | 8,091 | 8,973 | 89.6 | 92 | 26,920 | 244,880 | | | 2,205 | 5,463 | 4,095 |
| 23 | 3/4/2018 | 5,990 | 7,304 | 7,784 | 86.3 | 89.4 | 27,000 | 243,111 | | | 3,137 | 5,459 | 4,791 |
| 24 | 3/5/2018 | 6,075 | 7,740 | 8,680 | 83.8 | 87.5 | 27,020 | 242,700 | | | 2,818 | 5,523 | 3,789 |
| 25 | 3/5/2018 | 6,043 | 7,814 | 9,516 | 82.9 | 79.8 | 26,820 | 242,640 | | | 2,226 | 5,157 | 3,757 |
| 26 | 3/5/2018 | 5,811 | 7,587 | 8,169 | 86.2 | 86.9 | 27,060 | 241,240 | | | 2,104 | 5,195 | 4,222 |
| 27 | 3/5/2018 | 6,119 | 8,105 | 9,385 | 80.6 | 89.3 | 27,020 | 243,640 | | | 2,159 | 5,517 | 4,720 |
| 28 | 3/6/2018 | 6,085 | 7,546 | 8,554 | 86.2 | 88.8 | 27,000 | 243,220 | | | 2,134 | 5,382 | 3,854 |
| 29 | 3/6/2018 | 6,294 | 7,647 | 8,405 | 86.2 | 89.3 | 29,520 | 246,100 | | | 2,327 | 5,187 | 4,763 |
| 30 | 3/6/2018 | 5,962 | 8,023 | 8,731 | 87.3 | 90.7 | 30,500 | 237,540 | | | 2,016 | 5,183 | 4,572 |
| 31 | 3/7/2018 | 7,005 | 7,720 | 9,983 | 83.5 | 85.5 | 26,640 | 243,380 | | | 2,373 | 5,501 | 4,347 |
| 32 | 3/7/2018 | 6,033 | 7,578 | 8,076 | 85.4 | 86.5 | 26,920 | 243,480 | | | 2,281 | 5,209 | 4,440 |
| 33 | 3/7/2018 | 5,863 | 7,263 | 7,936 | 84.4 | 85.6 | 26,880 | 243,180 | | | 2,306 | 5,125 | 4,356 |
| 34 | 3/7/2018 | 6,068 | 7,226 | 7,748 | 82.2 | 85.5 | 26,960 | 244,020 | | | 1,991 | 5,264 | 3,812 |
| 35 | 3/8/2018 | 6,676 | 7,859 | 9,325 | 81.0 | 85.7 | 26,980 | 244,260 | | | 2,155 | 5,378 | 3,812 |
| 36 | 3/8/2018 | 6,019 | 7,691 | 8,339 | 86.4 | 91.1 | 26,940 | 243,180 | | | 1,928 | 5,263 | 4,300 |
| 37 | 3/8/2018 | 5,904 | 7,230 | 8,052 | 84.9 | 85.9 | 26,760 | 245,480 | | | 2,272 | 5,012 | 4,178 |
| 38 | 3/8/2018 | 6,221 | 7,733 | 8,528 | 80.8 | 85.9 | 27,140 | 247,200 | | | 2,302 | 5,025 | 3,750 |
| 39 | 3/8/2018 | 6,288 | 7,509 | 9,086 | 81.3 | 85.9 | 26,920 | 243,800 | | | 2,134 | 5,383 | 3,837 |
| 40 | 3/9/2018 | 5,935 | 7,445 | 8,937 | 83.4 | 85.9 | 26,900 | 243,160 | | | 2,104 | 5,354 | 3,779 |
| 41 | 3/9/2018 | 5,990 | 6,990 | 7,180 | 85.3 | 85.7 | 25,860 | 242,780 | | | 2,285 | 5,144 | 3,919 |
| 42 | 3/9/2018 | 5,720 | 7,428 | 8,529 | 84.6 | 86 | 26,920 | 240,980 | | | 2,432 | 5,011 | 4,287 |
| 43 | 3/9/2018 | 6,080 | 7,414 | 8,478 | 84.1 | 85.9 | 27,560 | 242,740 | | | 2,373 | 5,333 | 4,052 |
| 44 | 3/10/2018 | 6,030 | 7,257 | 8,349 | 83.7 | 86 | 25,520 | 245,180 | | | 2,545 | 5,035 | 3,674 |
| 45 | 3/10/2018 | 5,991 | 6,961 | 7,676 | 86.2 | 86.7 | 26,360 | 244,000 | | | 2,289 | 5,035 | 3,798 |
| 46 | 3/10/2018 | 5,983 | 7,092 | 7,611 | 91.1 | 91.5 | 26,960 | 243,580 | | | 2,239 | 5,048 | 4,348 |
| 47 | 3/11/2018 | 6,005 | 7,386 | 8,515 | 82.1 | 87 | 27,820 | 242,980 | | | 2,079 | 5,221 | 3,940 |
| 48 | 3/11/2018 | 5,522 | 7,109 | 7,906 | 84.9 | 86.1 | 28,240 | 244,240 | | | 2,239 | 5,043 | 4,120 |
| 49 | 3/11/2018 | 5,388 | 7,227 | 7,837 | 87.6 | 90.1 | 27,560 | 243,280 | | | 2,255 | 5,077 | 3,740 |
| 50 | 3/11/2018 | 5,957 | 7,498 | 8,579 | 90.0 | 91.2 | 30,820 | 239,760 | | | 2,054 | 4,041 | 3,309 |
| 51 | 3/12/2018 | 5,985 | 7,270 | 8,580 | 89.0 | 91.3 | 28,040 | 242,800 | | | 2,461 | 5,264 | 3,426 |
| 52 | 3/12/2018 | 6,163 | 7,408 | 8,704 | 88.4 | 92.3 | 28,500 | 241,440 | | | 2,138 | 5,283 | 3,667 |
| 53 | 3/12/2018 | 5,798 | 6,823 | 7,748 | 85.5 | 86.1 | 28,080 | 242,040 | | | 2,600 | 4,797 | 3,660 |
| Totals | | 319,223 | 7,714 | 8,641 | 82.3 | 86.72 | 1,403,180 | 12,465,121 | | | 157,397 | 277,066 | 4,045 |

02/15/2019

1403

02/15/2019

| Stage No. | Perforation Date | Top Depth (ft MD) | Bottom Depth (ft MD) | Number of Perfs |
|-----------|------------------|-------------------|----------------------|-----------------|
| Stg 53 | 3/12/2018 6:30 | 6792 | 6793 | 6 |
| Stg 53 | 3/12/2018 6:30 | 6822 | 6823 | 6 |
| Stg 53 | 3/12/2018 6:30 | 6852 | 6853 | 6 |
| Stg 53 | 3/12/2018 6:30 | 6882 | 6883 | 6 |
| Stg 53 | 3/12/2018 6:30 | 6912 | 6913 | 6 |
| Stg 52 | 3/12/2018 2:15 | 6942 | 6943 | 6 |
| Stg 52 | 3/12/2018 2:15 | 6972 | 6973 | 6 |
| Stg 52 | 3/12/2018 2:15 | 7002 | 7003 | 6 |
| Stg 52 | 3/12/2018 2:15 | 7032 | 7033 | 6 |
| Stg 52 | 3/12/2018 2:15 | 7062 | 7063 | 6 |
| Stg 51 | 3/11/2018 19:00 | 7092 | 7093 | 6 |
| Stg 51 | 3/11/2018 19:00 | 7122 | 7123 | 6 |
| Stg 51 | 3/11/2018 19:00 | 7152 | 7153 | 6 |
| Stg 51 | 3/11/2018 19:00 | 7182 | 7183 | 6 |
| Stg 51 | 3/11/2018 19:00 | 7212 | 7213 | 6 |
| Stg 50 | 3/11/2018 17:45 | 7242 | 7243 | 6 |
| Stg 50 | 3/11/2018 17:45 | 7272 | 7273 | 6 |
| Stg 50 | 3/11/2018 17:45 | 7302 | 7303 | 6 |
| Stg 50 | 3/11/2018 17:45 | 7332 | 7333 | 6 |
| Stg 50 | 3/11/2018 17:45 | 7362 | 7363 | 6 |
| Stg 49 | 3/11/2018 13:00 | 7392 | 7393 | 6 |
| Stg 49 | 3/11/2018 13:00 | 7422 | 7423 | 6 |
| Stg 49 | 3/11/2018 13:00 | 7452 | 7453 | 6 |
| Stg 49 | 3/11/2018 13:00 | 7482 | 7483 | 6 |
| Stg 49 | 3/11/2018 13:00 | 7512 | 7513 | 6 |
| Stg 48 | 3/11/2018 6:30 | 7542 | 7543 | 6 |
| Stg 48 | 3/11/2018 6:30 | 7572 | 7573 | 6 |
| Stg 48 | 3/11/2018 6:30 | 7602 | 7603 | 6 |
| Stg 48 | 3/11/2018 6:30 | 7632 | 7633 | 6 |
| Stg 48 | 3/11/2018 6:30 | 7662 | 7663 | 6 |
| Stg 47 | 3/10/2018 18:00 | 7692 | 7693 | 6 |
| Stg 47 | 3/10/2018 18:00 | 7722 | 7723 | 6 |
| Stg 47 | 3/10/2018 18:00 | 7752 | 7753 | 6 |
| Stg 47 | 3/10/2018 18:00 | 7782 | 7783 | 6 |
| Stg 47 | 3/10/2018 18:00 | 7812 | 7813 | 6 |
| Stg 46 | 3/10/2018 12:00 | 7842 | 7843 | 6 |
| Stg 46 | 3/10/2018 12:00 | 7872 | 7873 | 6 |
| Stg 46 | 3/10/2018 12:00 | 7902 | 7903 | 6 |
| Stg 46 | 3/10/2018 12:00 | 7932 | 7933 | 6 |
| Stg 46 | 3/10/2018 12:00 | 7962 | 7963 | 6 |
| Stg 45 | 3/10/2018 4:00 | 7992 | 7993 | 6 |
| Stg 45 | 3/10/2018 4:00 | 8022 | 8023 | 6 |
| Stg 45 | 3/10/2018 4:00 | 8052 | 8053 | 6 |
| Stg 45 | 3/10/2018 4:00 | 8082 | 8083 | 6 |
| Stg 45 | 3/10/2018 4:00 | 8112 | 8113 | 6 |
| Stg 44 | 3/9/2018 20:00 | 8142 | 8143 | 6 |

| | | | | |
|--------|----------------|------|------|---|
| Stg 44 | 3/9/2018 20:00 | 8172 | 8173 | 6 |
| Stg 44 | 3/9/2018 20:00 | 8202 | 8203 | 6 |
| Stg 44 | 3/9/2018 20:00 | 8232 | 8233 | 6 |
| Stg 44 | 3/9/2018 20:00 | 8262 | 8263 | 6 |
| Stg 43 | 3/9/2018 16:00 | 8292 | 8293 | 6 |
| Stg 43 | 3/9/2018 16:00 | 8322 | 8353 | 6 |
| Stg 43 | 3/9/2018 16:00 | 8352 | 8353 | 6 |
| Stg 43 | 3/9/2018 16:00 | 8382 | 8383 | 6 |
| Stg 43 | 3/9/2018 16:00 | 8412 | 8413 | 6 |
| Stg 42 | 3/9/2018 9:00 | 8442 | 8443 | 6 |
| Stg 42 | 3/9/2018 9:00 | 8472 | 8473 | 6 |
| Stg 42 | 3/9/2018 9:00 | 8502 | 8503 | 6 |
| Stg 42 | 3/9/2018 9:00 | 8532 | 8533 | 6 |
| Stg 42 | 3/9/2018 9:00 | 8562 | 8563 | 6 |
| Stg 41 | 3/9/2018 5:00 | 8592 | 8593 | 6 |
| Stg 41 | 3/9/2018 5:00 | 8622 | 8623 | 6 |
| Stg 41 | 3/9/2018 5:00 | 8652 | 8653 | 6 |
| Stg 41 | 3/9/2018 5:00 | 8682 | 8683 | 6 |
| Stg 41 | 3/9/2018 5:00 | 8712 | 8713 | 6 |
| Stg 40 | 3/9/2018 1:00 | 8742 | 8743 | 6 |
| Stg 40 | 3/9/2018 1:00 | 8772 | 8773 | 6 |
| Stg 40 | 3/9/2018 1:00 | 8802 | 8803 | 6 |
| Stg 40 | 3/9/2018 1:00 | 8832 | 8833 | 6 |
| Stg 40 | 3/9/2018 1:00 | 8862 | 8863 | 6 |
| Stg 39 | 3/8/2018 18:00 | 8892 | 8893 | 6 |
| Stg 39 | 3/8/2018 18:00 | 8922 | 8923 | 6 |
| Stg 39 | 3/8/2018 18:00 | 8952 | 8953 | 6 |
| Stg 39 | 3/8/2018 18:00 | 8982 | 8983 | 6 |
| Stg 39 | 3/8/2018 18:00 | 9012 | 9013 | 6 |
| Stg 38 | 3/8/2018 13:15 | 9042 | 9043 | 6 |
| Stg 38 | 3/8/2018 13:15 | 9072 | 9073 | 6 |
| Stg 38 | 3/8/2018 13:15 | 9102 | 9103 | 6 |
| Stg 38 | 3/8/2018 13:15 | 9132 | 9133 | 6 |
| Stg 38 | 3/8/2018 13:15 | 9162 | 9163 | 6 |
| Stg 37 | 3/8/2018 7:35 | 9192 | 9193 | 6 |
| Stg 37 | 3/8/2018 7:35 | 9222 | 9223 | 6 |
| Stg 37 | 3/8/2018 7:35 | 9252 | 9253 | 6 |
| Stg 37 | 3/8/2018 7:35 | 9282 | 9283 | 6 |
| Stg 37 | 3/8/2018 7:35 | 9312 | 9313 | 6 |
| Stg 36 | 3/8/2018 2:30 | 9342 | 9342 | 6 |
| Stg 36 | 3/8/2018 2:30 | 9372 | 9373 | 6 |
| Stg 36 | 3/8/2018 2:30 | 9402 | 9403 | 6 |
| Stg 36 | 3/8/2018 2:30 | 9432 | 9433 | 6 |
| Stg 36 | 3/8/2018 2:30 | 9462 | 9463 | 6 |
| Stg 35 | 3/7/2018 23:00 | 9492 | 9493 | 6 |
| Stg 35 | 3/7/2018 23:00 | 9522 | 9523 | 6 |
| Stg 35 | 3/7/2018 23:00 | 9552 | 9553 | 6 |

| | | | | |
|--------|----------------|-------|-------|---|
| Stg 35 | 3/7/2018 23:00 | 9582 | 9583 | 6 |
| Stg 35 | 3/7/2018 23:00 | 9612 | 9613 | 6 |
| Stg 34 | 3/7/2018 19:00 | 9642 | 9660 | 6 |
| Stg 34 | 3/7/2018 19:00 | 9672 | 9690 | 6 |
| Stg 34 | 3/7/2018 19:00 | 9702 | 9720 | 6 |
| Stg 34 | 3/7/2018 19:00 | 9732 | 9750 | 6 |
| Stg 34 | 3/7/2018 19:00 | 9762 | 9780 | 6 |
| Stg 33 | 3/7/2018 11:45 | 9792 | 9810 | 6 |
| Stg 33 | 3/7/2018 11:45 | 9822 | 9840 | 6 |
| Stg 33 | 3/7/2018 11:45 | 9852 | 9870 | 6 |
| Stg 33 | 3/7/2018 11:45 | 9882 | 9900 | 6 |
| Stg 33 | 3/7/2018 11:45 | 9912 | 9930 | 6 |
| Stg 32 | 3/7/2018 7:00 | 9942 | 9960 | 6 |
| Stg 32 | 3/7/2018 7:00 | 9972 | 9990 | 6 |
| Stg 32 | 3/7/2018 7:00 | 10002 | 10020 | 6 |
| Stg 32 | 3/7/2018 7:00 | 10032 | 10050 | 6 |
| Stg 32 | 3/7/2018 7:00 | 10062 | 10080 | 6 |
| Stg 31 | 3/6/2018 19:00 | 10092 | 10110 | 6 |
| Stg 31 | 3/6/2018 19:00 | 10122 | 10140 | 6 |
| Stg 31 | 3/6/2018 19:00 | 10152 | 10170 | 6 |
| Stg 31 | 3/6/2018 19:00 | 10182 | 10200 | 6 |
| Stg 31 | 3/6/2018 19:00 | 10212 | 10230 | 6 |
| Stg 30 | 3/6/2018 14:25 | 10242 | 10243 | 6 |
| Stg 30 | 3/6/2018 14:25 | 10272 | 10273 | 6 |
| Stg 30 | 3/6/2018 14:25 | 10302 | 10303 | 6 |
| Stg 30 | 3/6/2018 14:25 | 10332 | 10333 | 6 |
| Stg 30 | 3/6/2018 14:25 | 10362 | 10363 | 6 |
| Stg 29 | 3/6/2018 9:45 | 10392 | 10393 | 6 |
| Stg 29 | 3/6/2018 9:45 | 10422 | 10423 | 6 |
| Stg 29 | 3/6/2018 9:45 | 10452 | 10453 | 6 |
| Stg 29 | 3/6/2018 9:45 | 10482 | 10483 | 6 |
| Stg 29 | 3/6/2018 9:45 | 10512 | 10513 | 6 |
| Stg 28 | 3/5/2018 21:15 | 10542 | 10543 | 6 |
| Stg 28 | 3/5/2018 21:15 | 10572 | 10573 | 6 |
| Stg 28 | 3/5/2018 21:15 | 10602 | 10603 | 6 |
| Stg 28 | 3/5/2018 16:30 | 10632 | 10633 | 6 |
| Stg 28 | 3/5/2018 16:30 | 10662 | 10663 | 6 |
| Stg 27 | 3/5/2018 16:30 | 10692 | 10693 | 6 |
| Stg 27 | 3/5/2018 16:30 | 10722 | 10723 | 6 |
| Stg 27 | 3/5/2018 16:30 | 10752 | 10753 | 6 |
| Stg 27 | 3/5/2018 16:30 | 10782 | 10783 | 6 |
| Stg 27 | 3/5/2018 16:30 | 10812 | 10813 | 6 |
| Stg 26 | 3/5/2018 12:00 | 10842 | 10843 | 6 |
| Stg 26 | 3/5/2018 12:00 | 10872 | 10873 | 6 |
| Stg 26 | 3/5/2018 12:00 | 10902 | 10903 | 6 |
| Stg 26 | 3/5/2018 12:00 | 10932 | 10933 | 6 |
| Stg 26 | 3/5/2018 12:00 | 10962 | 10963 | 6 |

| | | | | |
|--------|----------------|-------|-------|---|
| Stg 25 | 3/5/2018 4:15 | 10992 | 10993 | 6 |
| Stg 25 | 3/5/2018 4:15 | 11022 | 11023 | 6 |
| Stg 25 | 3/5/2018 4:15 | 11052 | 11053 | 6 |
| Stg 25 | 3/5/2018 4:15 | 11082 | 11083 | 6 |
| Stg 25 | 3/5/2018 4:15 | 11112 | 11113 | 6 |
| Stg 24 | 3/4/2018 20:00 | 11142 | 11143 | 6 |
| Stg 24 | 3/4/2018 20:00 | 11172 | 11173 | 6 |
| Stg 24 | 3/4/2018 20:00 | 11202 | 11203 | 6 |
| Stg 24 | 3/4/2018 20:00 | 11232 | 11233 | 6 |
| Stg 24 | 3/4/2018 20:00 | 11262 | 11263 | 6 |
| Stg 23 | 3/4/2018 16:30 | 11292 | 11293 | 6 |
| Stg 23 | 3/4/2018 16:30 | 11322 | 11323 | 6 |
| Stg 23 | 3/4/2018 16:30 | 11352 | 11353 | 6 |
| Stg 23 | 3/4/2018 16:30 | 11382 | 11383 | 6 |
| Stg 23 | 3/4/2018 16:30 | 11412 | 11413 | 6 |
| Stg 22 | 3/4/2018 8:45 | 11442 | 11443 | 6 |
| Stg 22 | 3/4/2018 8:45 | 11472 | 11473 | 6 |
| Stg 22 | 3/4/2018 8:45 | 11502 | 11503 | 6 |
| Stg 22 | 3/4/2018 8:45 | 11532 | 11533 | 6 |
| Stg 22 | 3/4/2018 8:45 | 11562 | 11563 | 6 |
| Stg 21 | 3/4/2018 3:45 | 11592 | 11593 | 6 |
| Stg 21 | 3/4/2018 3:45 | 11622 | 11623 | 6 |
| Stg 21 | 3/4/2018 3:45 | 11652 | 11653 | 6 |
| Stg 21 | 3/4/2018 3:45 | 11682 | 11683 | 6 |
| Stg 21 | 3/4/2018 3:45 | 11712 | 11713 | 6 |
| Stg 20 | 3/4/2018 1:00 | 11742 | 11743 | 6 |
| Stg 20 | 3/4/2018 1:00 | 11772 | 11773 | 6 |
| Stg 20 | 3/4/2018 1:00 | 11802 | 11803 | 6 |
| Stg 20 | 3/4/2018 1:00 | 11832 | 11833 | 6 |
| Stg 20 | 3/4/2018 1:00 | 11862 | 11863 | 6 |
| Stg 19 | 3/3/2018 16:15 | 11892 | 11893 | 6 |
| Stg 19 | 3/3/2018 16:15 | 11922 | 11923 | 6 |
| Stg 19 | 3/3/2018 16:15 | 11952 | 11953 | 6 |
| Stg 19 | 3/3/2018 16:15 | 11982 | 11983 | 6 |
| Stg 19 | 3/3/2018 16:15 | 12012 | 12013 | 6 |
| Stg 18 | 3/3/2018 12:00 | 12042 | 12043 | 6 |
| Stg 18 | 3/3/2018 12:00 | 12042 | 12043 | 6 |
| Stg 18 | 3/3/2018 12:00 | 12072 | 12073 | 6 |
| Stg 18 | 3/3/2018 12:00 | 12132 | 12133 | 6 |
| Stg 18 | 3/3/2018 12:00 | 12162 | 12163 | 6 |
| Stg 17 | 3/3/2018 5:45 | 12192 | 12193 | 6 |
| Stg 17 | 3/3/2018 5:45 | 12222 | 12223 | 6 |
| Stg 17 | 3/3/2018 5:45 | 12252 | 12253 | 6 |
| Stg 17 | 3/3/2018 5:45 | 12282 | 12283 | 6 |
| Stg 17 | 3/3/2018 5:45 | 12312 | 12313 | 6 |
| Stg 16 | 3/3/2018 1:00 | 12341 | 12342 | 6 |
| Stg 16 | 3/3/2018 1:00 | 12371 | 12372 | 6 |

| | | | | |
|--------|-----------------|---------|---------|---|
| Stg 16 | 3/3/2018 1:00 | 12401 | 12402 | 6 |
| Stg 16 | 3/3/2018 1:00 | 12431 | 12432 | 6 |
| Stg 16 | 3/3/2018 1:00 | 12461 | 12462 | 6 |
| Stg 15 | 3/2/2018 16:00 | 12491 | 12492 | 6 |
| Stg 15 | 3/2/2018 16:00 | 12521 | 12522 | 6 |
| Stg 15 | 3/2/2018 16:00 | 12551 | 12552 | 6 |
| Stg 15 | 3/2/2018 16:00 | 12581 | 12582 | 6 |
| Stg 15 | 3/2/2018 16:00 | 12611 | 12612 | 6 |
| Stg 14 | 3/2/2018 11:30 | 12641 | 12642 | 6 |
| Stg 14 | 3/2/2018 11:30 | 12671 | 12672 | 6 |
| Stg 14 | 3/2/2018 11:30 | 12701 | 12702 | 6 |
| Stg 14 | 3/2/2018 11:30 | 12731 | 12732 | 6 |
| Stg 14 | 3/2/2018 11:30 | 12761 | 12762 | 6 |
| Stg 13 | 3/2/2018 6:30 | 12791 | 12792 | 6 |
| Stg 13 | 3/2/2018 6:30 | 12821 | 12822 | 6 |
| Stg 13 | 3/2/2018 6:30 | 12851 | 12852 | 6 |
| Stg 13 | 3/2/2018 6:30 | 12881 | 12882 | 6 |
| Stg 13 | 3/2/2018 6:30 | 12911 | 12912 | 6 |
| Stg 12 | 3/2/2018 2:00 | 12941 | 12942 | 6 |
| Stg 12 | 3/2/2018 2:00 | 12971 | 12972 | 6 |
| Stg 12 | 3/2/2018 2:00 | 13001 | 13002 | 6 |
| Stg 12 | 3/2/2018 2:00 | 13031 | 13032 | 6 |
| Stg 12 | 3/2/2018 2:00 | 13061 | 13062 | 6 |
| Stg 11 | 3/1/2018 19:00 | 13091 | 13093 | 6 |
| Stg 11 | 3/1/2018 19:00 | 13128.5 | 13130.5 | 6 |
| Stg 11 | 3/1/2018 19:00 | 13166 | 13168 | 6 |
| Stg 11 | 3/1/2018 19:00 | 13203.5 | 13205.5 | 6 |
| Stg 10 | 3/1/2018 13:30 | 13243 | 13244 | 8 |
| Stg 10 | 3/1/2018 13:30 | 13280 | 13281 | 8 |
| Stg 10 | 3/1/2018 13:30 | 13317 | 13318 | 8 |
| Stg 10 | 3/1/2018 13:30 | 13354 | 13355 | 8 |
| Stg 9 | 3/1/2018 5:45 | 13391 | 13392 | 8 |
| Stg 9 | 3/1/2018 5:45 | 13421 | 13422 | 8 |
| Stg 9 | 3/1/2018 5:45 | 13451 | 13452 | 8 |
| Stg 9 | 3/1/2018 5:45 | 13481 | 13482 | 8 |
| Stg 9 | 3/1/2018 5:45 | 13511 | 13512 | 8 |
| Stg 8 | 3/1/2018 1:00 | 13541 | 13542 | 6 |
| Stg 8 | 3/1/2018 1:00 | 13571 | 13572 | 6 |
| Stg 8 | 3/1/2018 1:00 | 13601 | 13602 | 6 |
| Stg 8 | 3/1/2018 1:00 | 13631 | 13632 | 6 |
| Stg 8 | 3/1/2018 1:00 | 13661 | 13662 | 6 |
| Stg 7 | 2/28/2018 14:45 | 13691 | 13692 | 8 |
| Stg 7 | 2/28/2018 14:45 | 13721 | 13722 | 8 |
| Stg 7 | 2/28/2018 14:45 | 13751 | 13752 | 8 |
| Stg 7 | 2/28/2018 14:45 | 13781 | 13782 | 8 |
| Stg 7 | 2/28/2018 14:45 | 13811 | 13812 | 8 |
| Stg 6 | 2/27/2018 14:45 | 13841 | 13842 | 8 |

| | | | | |
|----------------|-----------------|-------|-------|---|
| Stg 6 | 2/27/2018 14:45 | 13871 | 13872 | 8 |
| Stg 6 | 2/27/2018 14:45 | 13901 | 13902 | 8 |
| Stg 6 | 2/27/2018 14:45 | 13931 | 13932 | 8 |
| Stg 6 | 2/27/2018 14:45 | 13961 | 13962 | 8 |
| Stg 5 | 2/27/2018 5:00 | 13991 | 13992 | 8 |
| Stg 5 | 2/27/2018 5:00 | 14021 | 14022 | 8 |
| Stg 5 | 2/27/2018 5:00 | 14051 | 14052 | 8 |
| Stg 5 | 2/27/2018 5:00 | 14081 | 14082 | 8 |
| Stg 5 | 2/27/2018 5:00 | 14111 | 14112 | 8 |
| Stg 4 | 2/26/2018 1:00 | 14141 | 14142 | 6 |
| Stg 4 | 2/26/2018 1:00 | 14171 | 14172 | 6 |
| Stg 4 | 2/26/2018 1:00 | 14201 | 14202 | 6 |
| Stg 4 | 2/26/2018 1:00 | 14231 | 14232 | 6 |
| Stg 4 | 2/26/2018 1:00 | 14261 | 14262 | 6 |
| Stg 3 | 2/25/2018 7:45 | 14291 | 14292 | 6 |
| Stg 3 | 2/25/2018 7:45 | 14321 | 14322 | 6 |
| Stg 3 | 2/25/2018 7:45 | 14351 | 14352 | 6 |
| Stg 3 | 2/25/2018 7:45 | 14381 | 14382 | 6 |
| Stg 3 | 2/25/2018 7:45 | 14411 | 14412 | 6 |
| Stg 2 | 2/25/2018 2:00 | 14441 | 14442 | 6 |
| Stg 2 | 2/25/2018 2:00 | 14471 | 14472 | 6 |
| Stg 2 | 2/25/2018 2:00 | 14501 | 14502 | 6 |
| Stg 2 | 2/25/2018 2:00 | 14531 | 14532 | 6 |
| Stg 2 | 2/25/2018 2:00 | 14561 | 14562 | 6 |
| Stg 1 (Sleeve) | 2/16/2018 | 14587 | 14592 | 8 |
| Stg 1 (Sleeve) | 2/16/2018 | 14636 | 14641 | 8 |
| Stg 1 (Sleeve) | 2/16/2018 | 14687 | 14692 | 8 |

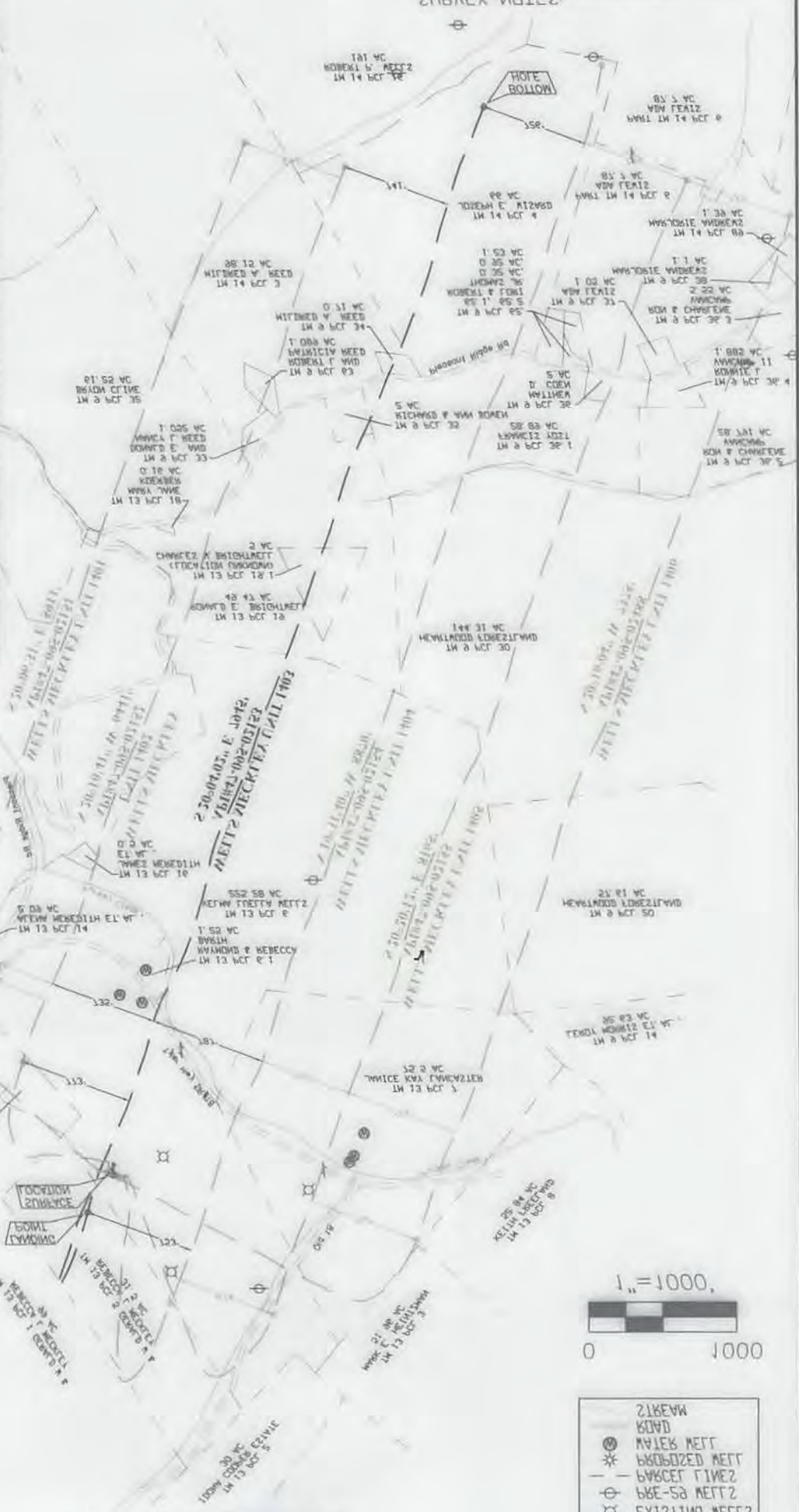
(304) 494-2302 BICKERING.ORG.COM
11383 EMBERTON AVENUE, BARKERSBURG, VA 26104
Architects • Engineers • Surveyors



NOTATION: THESE DIMENSIONED NOTES DESCRIBED LIEB'S EVIDENCE FOUND AND/OR THE WAY BOUNDARY LINES. THE LOCATION OF THE DIMENSIONED NOTES IS THE LOCATION OF THE WAY BOUNDARY LINES. THE LOCATION OF THE DIMENSIONED NOTES IS THE LOCATION OF THE WAY BOUNDARY LINES. THE LOCATION OF THE DIMENSIONED NOTES IS THE LOCATION OF THE WAY BOUNDARY LINES.

02/15/2019

Table with 3 columns: Lot ID, Owner Name, and Area/Notes. Lists lots 12313 through 12350 and various owners like WITMER & NEED, SHAW & NEED, etc.



COM: 80-81225028
LAT: 28-21222002
MAD 83

E: 205420 82,
N: 42120884 85,
PLAN 12-AM-83 WE1882
BOTTOM HOLE LOC.

COM: 80-85240512
LAT: 28-2285802
MAD 83

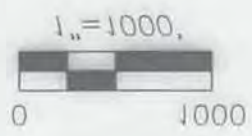
E: 208285 45,
N: 4238324 88,
PLAN 12-AM-83 WE1882
LANDING HOLE LOC.

COM: 80-85231178
LAT: 28-22522008
MAD 83

E: 208878 18,
N: 4218171 24,
PLAN 12-AM-83 WE1882
ZONING LOC.



(AS-DRAFTED)
MEET'S MECKLEY #03



Legend table with symbols and descriptions: DIMENSIONED NOTES, BOUNDARY LINES, PROPOSED MEET, BOUNDARY LINES, 688-58 MEET 2, EXISTING MEET 2, 1080 MAP BOUNDARY.