



Antero Resources
 Glover Unit 1H
 Tyler County WV
 Northing: 14306216.40
 Easting: 1713829.03
 As Drilled

WELL DETAILS: Glover Unit 1H
 +N/S +E/W Northing Easting
 0.0 0.0 14306216.40 1713829.03
 Ground Level: 749.0
 Easting 39° 23' 45.818" N
 Longitude 80° 44' 34.314" W
 SGA

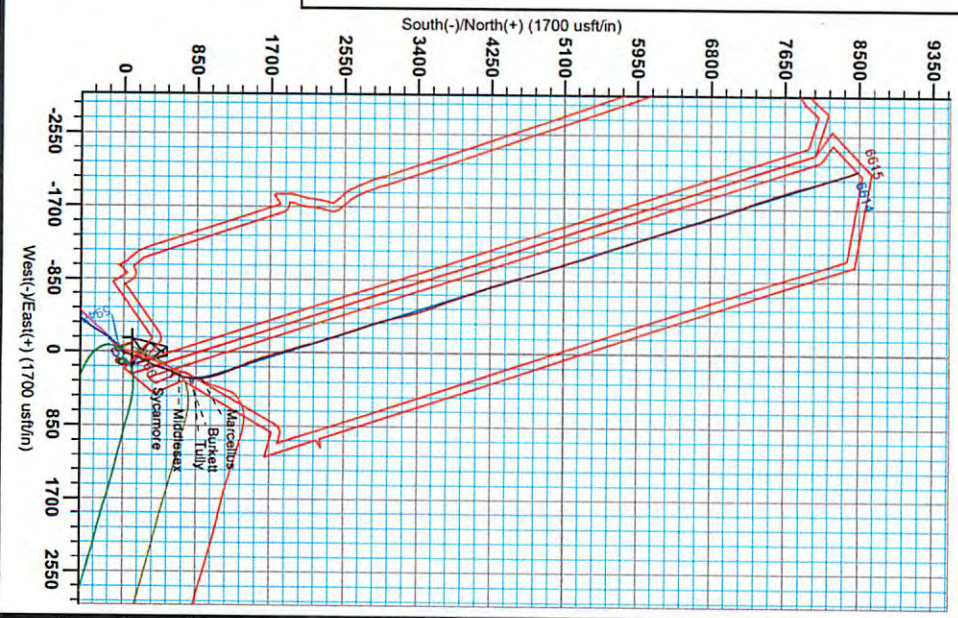
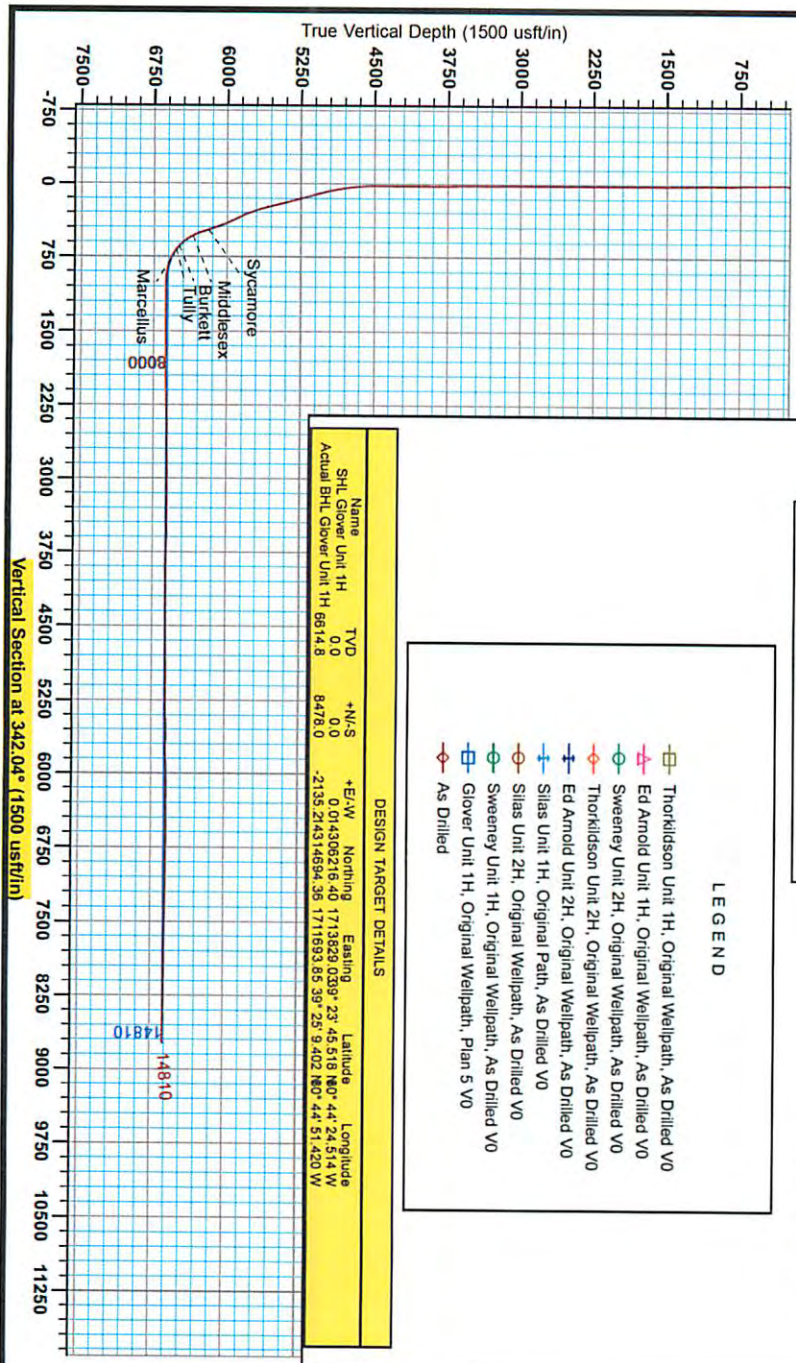
Scientific Drilling
 Genie Lightfoot
 10:53, August 22 2014
 Scientific Drilling
 421 South Eagle Lane
 Oklahoma City, OK

REFERENCE INFORMATION
 Coordinates: NAD 83
 Vertical (VD) Reference Point: US Survey Feet
 Horizontal (HD) Reference Point: US Survey Feet
 Magnetic Declination: 8.75° W
 Magnetic Variation: 8.75° W
 Model: BCGM2013

PROJECT DETAILS: Tyler County WV
 Geographic System: Universal Transverse Mercator (US Survey Feet)
 Datum: NAD 1983 (NAD83 CONUS)
 Ellipsoid: Clarke 1866
 Zone: Zone 17N (64 W to 78 W)
 System Datum: Mean Sea Level

- LEGEND
- Thoroldson Unit 1H, Original Wellpath, As Drilled VO
 - Ed Arnold Unit 1H, Original Wellpath, As Drilled VO
 - Sweeney Unit 2H, Original Wellpath, As Drilled VO
 - Thoroldson Unit 2H, Original Wellpath, As Drilled VO
 - Ed Arnold Unit 2H, Original Wellpath, As Drilled VO
 - Silas Unit 1H, Original Path, As Drilled VO
 - Sweeney Unit 2H, Original Wellpath, As Drilled VO
 - Glover Unit 1H, Original Wellpath, Plan 5 VO
 - As Drilled

DESIGN TARGET DETAILS					
Name	TYD	+N/S	+E/W	Northing	Easting
SHL Glover Unit 1H	0.0	0.0	0.0	14306216.40	1713829.03
Actual BHL Glover Unit 1H	6614.8	8478.0	-2135.274314694.36	1711693.85.39° 25' 9.402" N	44° 51' 42.0" W



RECEIVED
 Office of Oil and Gas
 JUL 06 2015
 WV Department of Environmental Protection
 07/24/2015



Antero Resources

Tyler County WV
Ed Arnold/Sweeney/Thorkildosn/Glover/Silas Pad
Glover Unit 1H
Original Wellpath

Design: As Drilled

EOW Completion Report

22 August, 2014



Scientific Drilling

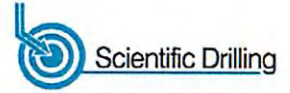
RECEIVED
Office of Oil and Gas

JUL 06 2015

WV Department of
Environmental Protection
07/24/2015



EOW Completion Report



Company:	Antero Resources	Local Co-ordinate Reference:	Well Glover Unit 1H
Project:	Tyler County WV	TVD Reference:	Frontier 22: GL 749' + 25' RKB @ 774.0usft
Site:	Ed Arnold/Sweeney/Thorkildosn/Glover/Silas Pac	MD Reference:	Frontier 22: GL 749' + 25' RKB @ 774.0usft
Well:	Glover Unit 1H	North Reference:	Grid
Wellbore:	Original Wellpath	Survey Calculation Method:	Minimum Curvature
Design:	As Drilled	Database:	Oklahoma District

Project	Tyler County WV, Tyler Co West Virginia		
Map System:	Universal Transverse Mercator (US Survey Fee	System Datum:	Mean Sea Level
Geo Datum:	NAD 1927 (NADCON CONUS)		
Map Zone:	Zone 17N (84 W to 78 W)		

Site	Ed Arnold/Sweeney/Thorkildosn/Glover/Silas Pad				
Site Position:		Northing:	14,306,188.32 usft	Latitude:	39° 23' 45.240 N
From:	Map	Easting:	1,713,823.50 usft	Longitude:	80° 44' 24.585 W
Position Uncertainty:	2.0 usft	Slot Radius:	13-3/16"	Grid Convergence:	0.16 °

Well	Glover Unit 1H, Marcellus					
Well Position	+N/-S	0.0 usft	Northing:	14,306,216.40 usft	Latitude:	39° 23' 45.518 N
	+E/-W	0.0 usft	Easting:	1,713,829.03 usft	Longitude:	80° 44' 24.514 W
Position Uncertainty		2.0 usft	Wellhead Elevation:	774.0 usft	Ground Level:	749.0 usft

Wellbore	Original Wellpath				
Magnetics	Model Name	Sample Date	Declination (°)	Dip Angle (°)	Field Strength (nT)
	BGGM2013	4/21/2014	-8.57	66.93	52,321

Design	As Drilled				
Audit Notes:					
Version:	1.0	Phase:	ACTUAL	Tie On Depth:	0.0
Vertical Section:	Depth From (TVD) (usft)	+N/-S (usft)	+E/-W (usft)	Direction (°)	
	0.0	0.0	0.0	342.04	

Survey Program	Date 8/22/2014				
From (usft)	To (usft)	Survey (Wellbore)	Tool Name	Description	
114.0	6,275.7	Survey #8 Final Gyro (Original Wellpath)	SDI Standard Keeper	Scientific Drilling Intl. Standard Wireline Keeper	
6,275.7	14,810.0	Survey #9 MWD (Original Wellpath)	SDI MWD	Scientific Drilling Intl. MWD - Standard ver 1.0.1	

Survey									
MD (usft)	Inc (°)	Azi (azimuth) (°)	TVD (usft)	N/S (usft)	E/W (usft)	V. Sec (usft)	DLeg (°/100usft)		
0.0	0.00	0.00	0.0	0.0	0.0	0.0	0.0	0.00	
114.0	0.35	224.26	114.0	-0.2	-0.2	-0.2	-0.2	0.31	
214.0	0.35	231.54	214.0	-0.7	-0.7	-0.4	-0.4	0.04	
314.0	0.14	154.96	314.0	-1.0	-0.9	-0.6	-0.6	0.35	
414.0	0.43	81.06	414.0	-1.0	-0.5	-0.8	-0.8	0.41	
514.0	4.23	58.80	513.9	1.0	3.1	0.0	0.0	3.84	
614.0	5.27	53.76	613.6	5.6	9.9	2.3	2.3	3.61	
714.0	6.30	53.49	713.0	11.6	18.0	5.4	5.4	3.61	
814.0	2.71	47.92	812.7	16.4	24.2	8.1	8.1	3.61	
914.0	1.93	49.13	912.6	19.1	27.2	9.8	9.8	0.78	
1,014.0	1.24	46.41	1,012.6	20.9	29.3	10.9	10.9	0.69	

RECEIVED
Office of Oil and Gas
JUL 06 2015



EOW Completion Report



Company:	Antero Resources	Local Co-ordinate Reference:	Well Glover Unit 1H
Project:	Tyler County WV	TVD Reference:	Frontier 22: GL 749' + 25' RKB @ 774.0usft
Site:	Ed Arnold/Sweeney/Thorkildosn/Glover/Silas Pac	MD Reference:	Frontier 22: GL 749' + 25' RKB @ 774.0usft
Well:	Glover Unit 1H	North Reference:	Grid
Wellbore:	Original Wellpath	Survey Calculation Method:	Minimum Curvature
Design:	As Drilled	Database:	Oklahoma District

Survey									
MD (usft)	Inc (°)	Azi (azimuth) (°)		TVD (usft)	N/S (usft)	E/W (usft)	V. Sec (usft)	DLeg (°/100usft)	
1,114.0	0.92	51.49		1,112.6	22.2	30.7	11.6		0.33
1,214.0	0.46	43.90		1,212.6	23.0	31.6	12.1		0.47
1,314.0	0.19	20.52		1,312.6	23.4	31.9	12.4		0.30
1,414.0	0.23	357.78		1,412.6	23.8	32.0	12.8		0.09
1,514.0	0.28	338.62		1,512.6	24.2	31.9	13.2		0.10
1,614.0	0.32	340.08		1,612.6	24.7	31.7	13.7		0.04
1,714.0	0.12	325.19		1,712.6	25.1	31.6	14.1		0.21
1,814.0	0.17	308.39		1,812.6	25.2	31.4	14.3		0.07
1,914.0	0.17	292.98		1,912.6	25.4	31.1	14.5		0.05
2,014.0	0.14	263.65		2,012.6	25.4	30.9	14.7		0.08
2,114.0	0.21	276.20		2,112.6	25.4	30.6	14.8		0.08
2,214.0	0.12	246.59		2,212.6	25.4	30.3	14.8		0.12
2,314.0	0.10	257.68		2,312.6	25.3	30.1	14.8		0.03
2,414.0	0.23	286.32		2,412.6	25.4	29.8	14.9		0.15
2,514.0	0.27	289.65		2,512.6	25.5	29.4	15.2		0.04
2,614.0	0.30	265.38		2,612.6	25.6	28.9	15.4		0.12
2,714.0	0.40	280.68		2,712.6	25.6	28.3	15.6		0.14
2,814.0	0.50	280.84		2,812.6	25.8	27.6	16.0		0.10
2,914.0	0.44	288.18		2,912.5	26.0	26.8	16.5		0.08
3,014.0	0.56	268.32		3,012.5	26.1	25.9	16.8		0.21
3,114.0	0.59	272.38		3,112.5	26.1	24.9	17.1		0.05
3,214.0	0.56	285.10		3,212.5	26.2	23.9	17.6		0.13
3,314.0	0.49	279.65		3,312.5	26.4	23.0	18.0		0.09
3,414.0	0.55	277.15		3,412.5	26.6	22.1	18.4		0.06
3,514.0	0.54	270.96		3,512.5	26.6	21.2	18.8		0.06
3,614.0	0.59	274.07		3,612.5	26.7	20.2	19.1		0.06
3,714.0	0.50	287.78		3,712.5	26.8	19.3	19.6		0.16
3,814.0	0.34	316.24		3,812.5	27.2	18.7	20.1		0.26
3,914.0	0.35	302.83		3,912.5	27.6	18.2	20.6		0.08
4,014.0	0.37	308.38		4,012.5	27.9	17.7	21.1		0.04
4,114.0	0.32	326.96		4,112.5	28.4	17.3	21.7		0.12
4,214.0	0.08	342.99		4,212.5	28.7	17.1	22.0		0.24
4,314.0	0.09	38.98		4,312.5	28.8	17.1	22.1		0.08
4,414.0	0.03	350.71		4,412.5	28.9	17.2	22.2		0.07
4,514.0	0.51	5.02		4,512.5	29.4	17.2	22.6		0.48
4,614.0	4.29	30.17		4,612.4	33.0	19.1	25.5		3.83
4,714.0	8.45	17.57		4,711.8	43.3	23.2	34.0		4.36
4,814.0	11.84	18.70		4,810.2	60.0	28.7	48.2		3.40
4,914.0	13.56	17.30		4,907.7	80.9	35.5	66.0		1.75
5,014.0	17.46	18.30		5,004.1	106.4	43.7	87.7		
5,114.0	19.11	19.10		5,099.0	136.1	53.8	112.9		
5,214.0	19.74	19.33		5,193.3	167.5	64.7	138.4		
5,314.0	19.45	21.62		5,287.5	198.9	76.5	165.6		
5,414.0	19.68	26.16		5,381.8	229.5	90.0	190.6		

RECEIVED
Office of Oil and Gas
JUL 06 2015



EOW Completion Report



Company:	Antero Resources	Local Co-ordinate Reference:	Well Glover Unit 1H
Project:	Tyler County WV	TVD Reference:	Frontier 22: GL 749' + 25' RKB @ 774.0usft
Site:	Ed Arnold/Sweeney/Thorkildsen/Glover/Silas Pac	MD Reference:	Frontier 22: GL 749' + 25' RKB @ 774.0usft
Well:	Glover Unit 1H	North Reference:	Grid
Wellbore:	Original Wellpath	Survey Calculation Method:	Minimum Curvature
Design:	As Drilled	Database:	Oklahoma District

Survey

MD (usft)	Inc (°)	Azi (azimuth) (°)	TVD (usft)	N/S (usft)	E/W (usft)	V. Sec (usft)	DLeg (°/100usft)
5,514.0	18.96	26.16	5,476.1	259.2	104.6	214.3	0.72
5,614.0	20.84	27.86	5,570.2	289.5	120.1	238.4	1.97
5,714.0	23.97	29.67	5,662.6	322.9	138.4	264.5	3.20
5,814.0	27.01	25.59	5,752.9	361.0	158.3	294.6	3.51
5,914.0	29.83	16.56	5,840.8	405.4	175.2	331.6	5.13
6,014.0	30.23	15.56	5,927.4	453.5	189.1	373.1	0.64
6,114.0	27.76	17.49	6,014.9	499.9	202.8	413.0	2.64
6,214.0	25.57	25.92	6,104.3	541.6	219.3	447.6	4.37
6,275.7	25.74	28.78	6,159.9	565.3	231.5	466.3	2.03
6,311.0	25.60	27.55	6,191.7	578.8	238.7	477.0	1.56
Sycamore							
6,399.0	25.29	24.44	6,271.2	612.7	255.3	504.2	1.56
6,431.0	26.20	22.97	6,300.0	625.5	260.9	514.5	3.47
6,463.0	29.46	21.15	6,328.3	639.3	266.5	526.0	10.53
6,491.0	32.90	20.33	6,352.3	652.9	271.6	537.3	12.37
Middlesex							
6,495.0	33.39	20.22	6,355.6	654.9	272.4	539.0	12.37
6,528.0	37.61	20.21	6,382.5	672.9	279.0	554.1	12.79
6,560.0	39.55	19.95	6,407.5	691.6	285.9	569.8	6.08
6,592.0	41.51	17.92	6,431.8	711.3	292.6	586.4	7.38
6,624.0	44.96	14.64	6,455.1	732.3	298.7	604.6	12.86
6,656.0	48.36	11.88	6,477.1	755.0	304.0	624.5	12.34
6,679.0	50.69	9.51	6,492.0	772.2	307.3	639.8	12.79
Burkett							
6,688.0	51.61	8.63	6,497.7	779.1	308.4	646.1	12.79
6,720.0	54.85	5.56	6,516.8	804.5	311.5	669.3	12.71
6,726.0	55.35	4.94	6,520.2	809.4	312.0	673.8	11.88
Tully							
6,753.0	57.65	2.26	6,535.1	831.9	313.4	694.7	11.88
6,785.0	60.75	359.05	6,551.5	859.4	313.7	720.8	12.96
6,817.0	64.24	356.02	6,566.3	887.7	312.5	748.1	13.76
6,848.0	66.86	353.69	6,579.1	915.8	309.9	775.6	10.85
Marcellus							
6,849.0	66.94	353.62	6,579.5	916.7	309.8	776.5	10.85
6,881.0	70.04	351.27	6,591.3	946.2	305.9	805.8	11.85
6,913.0	72.98	349.78	6,601.4	976.2	300.9	835.8	10.19
6,945.0	76.34	347.66	6,609.9	1,006.4	294.9	866.5	12.29
6,977.0	79.19	345.21	6,616.7	1,036.8	287.5	897.6	11.63
7,027.0	84.94	343.01	6,623.6	1,084.4	274.0	947.1	12.30
7,110.0	91.31	340.54	6,626.3	1,163.2	248.0	1,030.0	8.23
7,206.0	89.76	336.61	6,625.4	1,252.5	213.0	1,125.8	2.23
7,302.0	89.56	335.90	6,625.9	1,340.4	174.3	1,317.9	0.77
7,399.0	91.51	337.34	6,625.0	1,429.4	135.8	1,413.6	2.50
7,495.0	89.16	338.41	6,624.5	1,518.3	99.7	1,509.5	2.69
7,591.0	90.17	341.11	6,625.0	1,608.4	66.5		3.00

RECEIVED
Office of Oil and Gas
JUL 06 2015



EOW Completion Report



Company:	Antero Resources	Local Co-ordinate Reference:	Well Glover Unit 1H
Project:	Tyler County WV	TVD Reference:	Frontier 22: GL 749' + 25' RKB @ 774.0usft
Site:	Ed Arnold/Sweeney/Thorkildosn/Glover/Silas Pac	MD Reference:	Frontier 22: GL 749' + 25' RKB @ 774.0usft
Well:	Glover Unit 1H	North Reference:	Grid
Wellbore:	Original Wellpath	Survey Calculation Method:	Minimum Curvature
Design:	As Drilled	Database:	Oklahoma District

MD (usft)	Inc (°)	Azi (azimuth) (°)	TVD (usft)	N/S (usft)	E/W (usft)	V. Sec (usft)	DLeg (°/100usft)
7,687.0	90.30	345.45	6,624.6	1,700.3	38.9	1,605.5	4.52
7,782.0	91.54	345.34	6,623.1	1,792.2	14.9	1,700.3	1.31
7,878.0	90.10	340.41	6,621.7	1,883.9	-13.3	1,796.3	5.35
7,974.0	90.50	342.75	6,621.2	1,975.0	-43.7	1,892.2	2.47
8,070.0	89.93	345.74	6,620.9	2,067.4	-69.7	1,988.2	3.17
8,165.0	92.19	345.78	6,619.1	2,159.5	-93.1	2,082.9	2.38
8,260.0	92.18	342.86	6,615.5	2,250.8	-118.8	2,177.8	3.07
8,356.0	92.92	343.57	6,611.2	2,342.7	-146.4	2,273.7	1.07
8,452.0	91.68	342.45	6,607.4	2,434.4	-174.5	2,369.6	1.74
8,548.0	90.97	341.17	6,605.2	2,525.6	-204.4	2,465.5	1.52
8,644.0	89.60	340.63	6,604.7	2,616.3	-235.8	2,561.5	1.53
8,739.0	90.00	340.63	6,605.0	2,705.9	-267.4	2,656.5	0.42
8,835.0	91.04	341.00	6,604.1	2,796.6	-298.9	2,752.5	1.15
8,931.0	89.90	340.86	6,603.4	2,887.3	-330.3	2,848.4	1.20
9,026.0	90.47	343.69	6,603.1	2,977.8	-359.2	2,943.4	3.04
9,123.0	90.00	345.63	6,602.7	3,071.3	-384.8	3,040.3	2.06
9,219.0	90.10	348.09	6,602.6	3,164.8	-406.7	3,136.0	2.56
9,310.0	90.94	348.31	6,601.7	3,253.9	-425.3	3,226.4	0.95
9,400.0	89.50	344.46	6,601.4	3,341.3	-446.5	3,316.2	4.57
9,491.0	91.04	342.32	6,601.0	3,428.5	-472.5	3,407.1	2.90
9,582.0	89.46	339.10	6,600.6	3,514.4	-502.5	3,498.1	3.94
9,672.0	88.46	339.18	6,602.2	3,598.5	-534.6	3,588.0	1.11
9,763.0	88.32	338.06	6,604.8	3,683.2	-567.7	3,678.8	1.24
9,854.0	89.03	340.08	6,606.9	3,768.1	-600.2	3,769.6	2.35
9,944.0	88.86	342.05	6,608.5	3,853.3	-629.4	3,859.6	2.20
10,035.0	89.93	340.81	6,609.5	3,939.5	-658.4	3,950.6	1.80
10,126.0	90.87	339.65	6,608.8	4,025.1	-689.2	4,041.5	1.64
10,216.0	89.66	338.14	6,608.4	4,109.1	-721.6	4,131.4	2.15
10,307.0	89.90	340.82	6,608.8	4,194.3	-753.5	4,222.3	2.96
10,404.0	90.23	343.31	6,608.7	4,286.6	-783.3	4,319.3	2.59
10,500.0	90.94	342.03	6,607.7	4,378.2	-811.9	4,415.2	1.52
10,596.0	89.73	339.36	6,607.1	4,468.8	-843.7	4,511.2	3.05
10,693.0	90.00	345.61	6,607.4	4,561.3	-872.8	4,608.2	6.45
10,789.0	92.12	344.05	6,605.6	4,653.9	-898.0	4,704.0	2.74
10,886.0	90.60	342.19	6,603.3	4,746.7	-926.1	4,801.0	2.48
10,982.0	89.90	340.57	6,602.9	4,837.7	-956.8	4,897.0	1.84
11,079.0	90.17	343.22	6,602.8	4,929.9	-986.9	4,993.9	2.75
11,175.0	90.47	341.87	6,602.3	5,021.4	-1,015.7	5,089.9	1.44
11,271.0	89.26	341.19	6,602.5	5,112.5	-1,046.1	5,185.9	1.45
11,368.0	91.48	344.20	6,601.9	5,205.1	-1,075.0	5,282.9	3.86
11,464.0	92.28	343.13	6,598.7	5,297.1	-1,102.0	5,378.8	1.39
11,560.0	91.51	342.34	6,595.5	5,388.8	-1,130.4	5,474.8	3.39
11,657.0	89.29	339.92	6,594.9	5,480.5	-1,161.8	5,571.7	3.39
11,753.0	88.96	340.99	6,596.3	5,571.0	-1,193.9	5,667.7	1.88
11,849.0	90.17	342.33	6,597.1	5,662.1	-1,224.1	5,763.7	1.88

Company:	Antero Resources	Local Co-ordinate Reference:	Well Glover Unit 1H
Project:	Tyler County WV	TVD Reference:	Frontier 22: GL 749' + 25' RKB @ 774.0usft
Site:	Ed Arnold/Sweeney/Thorkildsen/Glover/Silas Pac	MD Reference:	Frontier 22: GL 749' + 25' RKB @ 774.0usft
Well:	Glover Unit 1H	North Reference:	Grid
Wellbore:	Original Wellpath	Survey Calculation Method:	Minimum Curvature
Design:	As Drilled	Database:	Oklahoma District

MD (usft)	Inc (°)	Azi (azimuth) (°)	TVD (usft)	N/S (usft)	E/W (usft)	V. Sec (usft)	DLeg (°/100usft)
11,945.0	91.17	342.66	6,595.9	5,753.7	-1,253.0	5,859.7	1.10
12,041.0	92.22	343.24	6,593.1	5,845.4	-1,281.1	5,955.6	1.25
12,138.0	91.11	342.22	6,590.3	5,938.0	-1,309.9	6,052.6	1.55
12,234.0	90.13	339.81	6,589.2	6,028.8	-1,341.1	6,148.5	2.71
12,331.0	88.69	340.94	6,590.2	6,120.1	-1,373.7	6,245.5	1.89
12,427.0	90.30	343.26	6,591.1	6,211.4	-1,403.2	6,341.5	2.94
12,523.0	90.67	344.21	6,590.3	6,303.6	-1,430.1	6,437.4	1.06
12,620.0	89.56	341.36	6,590.1	6,396.2	-1,458.8	6,534.4	3.15
12,716.0	88.96	341.66	6,591.3	6,487.3	-1,489.2	6,630.4	0.70
12,812.0	91.17	344.29	6,591.2	6,579.1	-1,517.3	6,726.4	3.58
12,908.0	89.80	343.02	6,590.4	6,671.2	-1,544.4	6,822.3	1.95
13,004.0	89.80	342.02	6,590.7	6,762.7	-1,573.2	6,918.3	1.04
13,100.0	89.60	341.32	6,591.2	6,853.9	-1,603.4	7,014.3	0.76
13,197.0	89.73	341.69	6,591.8	6,945.9	-1,634.2	7,111.3	0.40
13,293.0	88.39	339.92	6,593.4	7,036.5	-1,665.7	7,207.3	2.31
13,390.0	89.40	340.40	6,595.2	7,127.7	-1,698.6	7,304.2	1.15
13,486.0	88.69	339.09	6,596.8	7,217.8	-1,731.9	7,400.1	1.55
13,582.0	89.09	338.56	6,598.7	7,307.3	-1,766.5	7,495.9	0.69
13,678.0	89.23	341.36	6,600.1	7,397.4	-1,799.4	7,591.8	2.92
13,774.0	90.10	341.97	6,600.7	7,488.6	-1,829.6	7,687.8	1.11
13,871.0	90.91	342.39	6,599.8	7,580.9	-1,859.3	7,784.8	0.94
13,967.0	88.28	340.91	6,600.5	7,672.0	-1,889.5	7,880.8	3.14
14,063.0	88.82	343.10	6,602.9	7,763.3	-1,919.2	7,976.8	2.35
14,160.0	87.85	343.35	6,605.7	7,856.1	-1,947.1	8,073.7	1.03
14,256.0	89.46	345.80	6,608.0	7,948.6	-1,972.7	8,169.6	3.05
14,353.0	90.47	345.82	6,608.1	8,042.7	-1,996.4	8,266.4	1.04
14,449.0	88.22	341.94	6,609.2	8,134.9	-2,023.1	8,362.3	4.67
14,545.0	89.19	342.53	6,611.3	8,226.3	-2,052.4	8,458.3	1.18
14,642.0	89.23	341.92	6,612.7	8,318.6	-2,082.0	8,555.2	0.63
14,738.0	89.29	341.34	6,614.1	8,426.8	-2,117.9	8,669.2	0.51
14,834.0	89.29	341.34	6,614.8	8,478.0	-2,135.2	8,723.2	0.00

Measured Depth (usft)	Vertical Depth (usft)	Local Coordinates		Comment
		+N/-S (usft)	+E/-W (usft)	
6,311.0	6,191.7	578.8	238.7	Sycamore
6,491.0	6,352.3	652.9	271.6	Middlesex
6,679.0	6,492.0	772.2	307.3	Burkett
6,726.0	6,520.2	809.4	312.0	Tully
6,848.0	6,579.1	915.8	309.9	Marcellus

RECEIVED
Office of Oil and Gas
JUL 06 2015

Checked By: _____ Approved By: _____ Date: _____

WV Department of
Environmental Protection
COMPASS 5000.1 Build 70
07/24/2015