



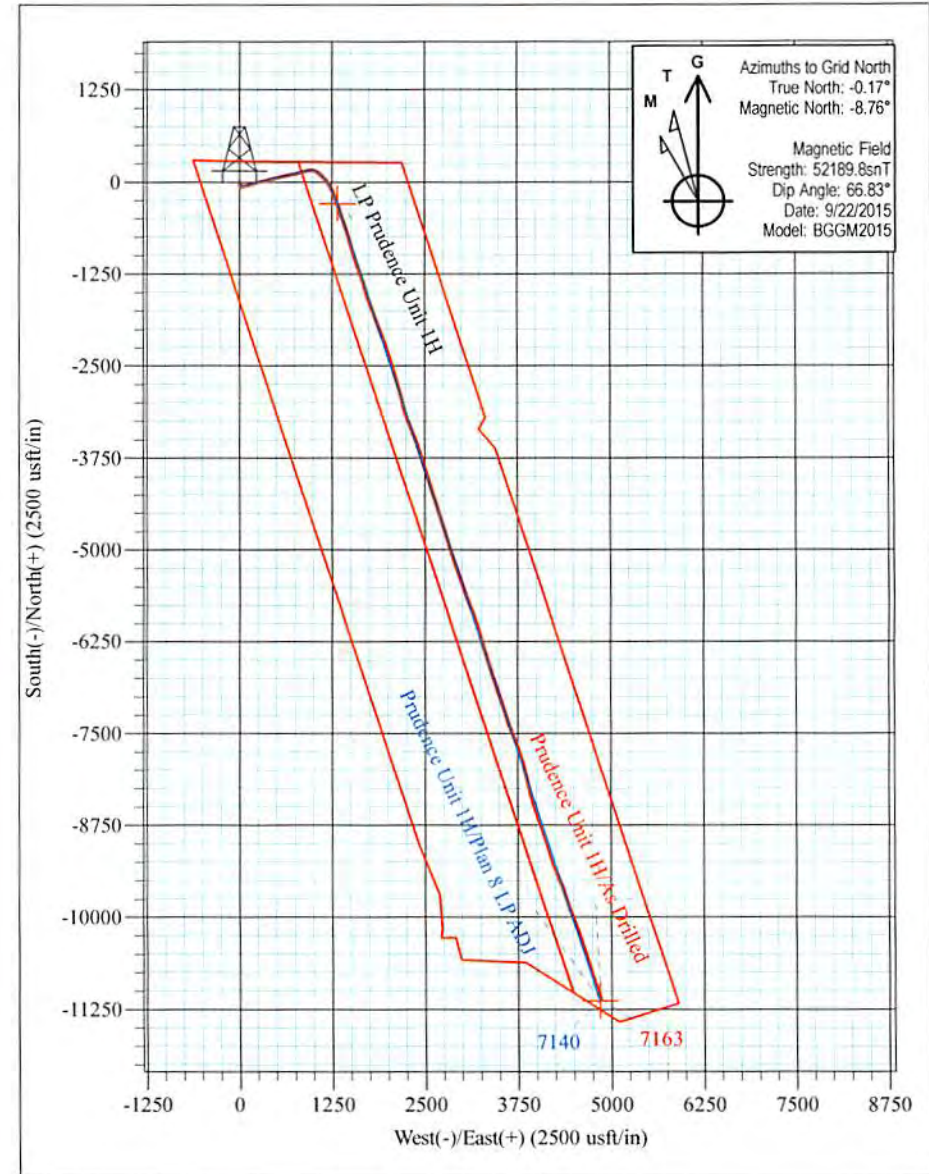
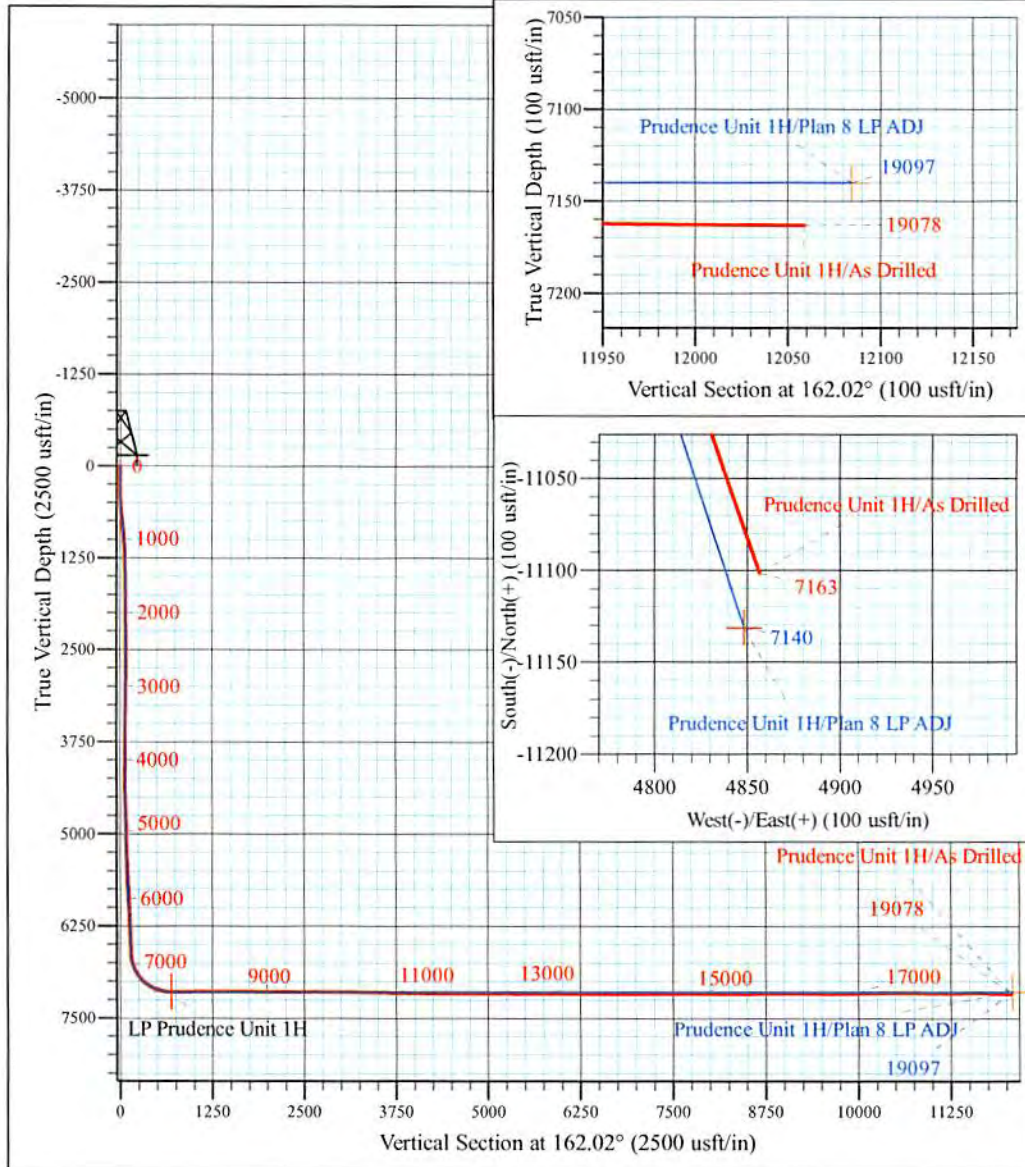
Coastal 2 Pad: Banner/Prudence/Tabor
 Prudence Unit 1H
 Plan 8 LP ADJ
 Precision 525: 1188' GL + 19' KB @ 1207.0usft
 Tyler County WV

PROJECT DETAILS:
 Geodetic System: Universal Transverse Mercator (US Survey Feet)
 Datum: NAD 1927 (NADCON CONUS)
 Ellipsoid: Clarke 1866
 Zone: Zone 17N (84 W to 78 W)
 System Datum: Mean Sea Level



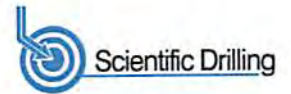
WELL DETAILS: **Prudence Unit 1H SHL**

+N/-S	+E/-W	Northing	Easting	Latitude	Longitude
0.0	0.0	14318127.07	1717788.47	39° 25' 43.167 N	80° 43' 33.599 W



Prudence Unit 1H
Approx. BHL
 39° 23' 53.25 N 80° 42' 32.140 W

Shane Rhodes
 15:05, October 06 2015
 Scientific Drilling International
 124 Vista Drive
 Charleroi, PA 15022



Company:	Antero Resources	Local Co-ordinate Reference:	Well Prudence Unit 1H
Project:	Tyler County WV	TVD Reference:	Precision 525: 1188' GL + 19' KB @ 1207.0usft
Site:	Coastal 2 Pad: Banner/Prudence/Tabor	MD Reference:	Precision 525: 1188' GL + 19' KB @ 1207.0usft
Well:	Prudence Unit 1H	North Reference:	Grid
Wellbore:	Original Wellpath	Survey Calculation Method:	Minimum Curvature
Design:	As Drilled	Database:	Antero NE

Project	Tyler County WV, Tyler Co West Virginia		
Map System:	Universal Transverse Mercator (US Survey Feet)	System Datum:	Mean Sea Level
Geo Datum:	NAD 1927 (NADCON CONUS)		
Map Zone:	Zone 17N (84 W to 78 W)		

Site	Coastal 2 Pad: Banner/Prudence/Tabor				
Site Position:		Northing:	14,318,150.53 usft	Latitude:	39° 25' 43.400 N
From:	Map	Easting:	1,717,756.08 usft	Longitude:	80° 43' 34.011 W
Position Uncertainty:	0.0 usft	Slot Radius:	13-3/16 "	Grid Convergence:	0.17 °

Well	Prudence Unit 1H, Marcellus					
Well Position	+N/-S	0.0 usft	Northing:	14,318,127.07 usft	Latitude:	39° 25' 43.167 N
	+E/-W	0.0 usft	Easting:	1,717,788.46 usft	Longitude:	80° 43' 33.599 W
Position Uncertainty	2.0 usft		Wellhead Elevation:	1,207.0 usft	Ground Level:	1,188.0 usft

Wellbore	Original Wellpath				
Magnetics	Model Name	Sample Date	Declination (°)	Dip Angle (°)	Field Strength (nT)
	BGGM2015	9/22/2015	-8.59	66.83	52,190

Design	As Drilled				
Audit Notes:					
Version:	1.0	Phase:	ACTUAL	Tie On Depth:	0.0
Vertical Section:	Depth From (TVD) (usft)	+N/-S (usft)	+E/-W (usft)	Direction (°)	
	0.0	0.0	0.0	162.02	

Survey Program	Date 10/6/2015			
From (usft)	To (usft)	Survey (Wellbore)	Tool Name	Description
100.4	6,712.7	Survey #8 Final Gyro (Original Wellpath)	Standard Keeper 104	Standard Wireline Keeper ver 1.0.4
6,795.0	19,078.0	Survey #9 MWD Surveys (Original Wellpa	SDI MWD	Scientific Drilling Intl. MWD - Standard ver 1.0.1

Measured Depth (usft)	Inclination (°)	Azimuth (°)	Vertical Depth (usft)	+N/-S (usft)	+E/-W (usft)	Vertical Section (usft)	Dogleg Rate (°/100usft)	Build Rate (°/100usft)	Turn Rate (°/100usft)
0.0	0.00	0.00	0.0	0.0	0.0	0.0	0.00	0.00	0.00
100.4	0.42	244.14	100.4	-0.2	-0.3	0.1	0.42	0.42	0.00
124.9	0.34	247.95	124.9	-0.2	-0.5	0.1	0.34	-0.33	15.57
148.8	0.40	235.19	148.8	-0.3	-0.6	0.1	0.42	0.25	-53.34
174.1	0.40	270.57	174.1	-0.4	-0.8	0.1	0.96	0.00	139.95
199.3	0.40	248.71	199.3	-0.4	-0.9	0.1	0.60	0.00	-86.54
224.6	0.36	246.63	224.6	-0.4	-1.1	0.1	0.17	-0.16	-8.25
249.4	0.49	237.11	249.4	-0.5	-1.3	0.1	0.59	0.52	-38.25
274.3	0.45	250.20	274.3	-0.6	-1.4	0.1	0.46	-0.16	52.68
299.1	0.36	224.46	299.1	-0.7	-1.6	0.2	0.81	-0.36	-103.71



Scientific Drilling International

Survey Report



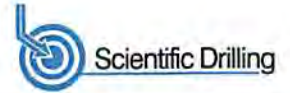
Company:	Antero Resources	Local Co-ordinate Reference:	Well Prudence Unit 1H
Project:	Tyler County WV	TVD Reference:	Precision 525: 1188' GL + 19' KB @ 1207.0usft
Site:	Coastal 2 Pad: Banner/Prudence/Tabor	MD Reference:	Precision 525: 1188' GL + 19' KB @ 1207.0usft
Well:	Prudence Unit 1H	North Reference:	Grid
Wellbore:	Original Wellpath	Survey Calculation Method:	Minimum Curvature
Design:	As Drilled	Database:	Antero NE

Survey

Measured Depth (usft)	Inclination (°)	Azimuth (°)	Vertical Depth (usft)	+N/-S (usft)	+E/-W (usft)	Vertical Section (usft)	Dogleg Rate (°/100usft)	Build Rate (°/100usft)	Turn Rate (°/100usft)
324.1	0.49	218.52	324.1	-0.9	-1.7	0.3	0.55	0.52	-23.73
349.0	0.41	227.37	349.0	-1.0	-1.8	0.4	0.43	-0.32	35.61
373.8	0.42	204.04	373.8	-1.1	-1.9	0.5	0.68	0.04	-93.96
398.9	0.72	191.74	398.9	-1.4	-2.0	0.7	1.28	1.20	-49.00
424.0	1.26	174.44	424.0	-1.8	-2.0	1.1	2.44	2.15	-68.95
449.0	2.09	164.76	449.0	-2.5	-1.9	1.8	3.49	3.32	-38.70
474.2	2.48	162.73	474.1	-3.5	-1.6	2.8	1.58	1.55	-8.08
497.7	2.79	159.86	497.6	-4.5	-1.2	3.9	1.43	1.32	-12.21
522.8	3.27	161.07	522.7	-5.8	-0.8	5.2	1.93	1.91	4.82
547.6	4.72	158.04	547.4	-7.4	-0.2	7.0	5.90	5.84	-12.21
572.8	5.36	158.71	572.6	-9.4	0.6	9.2	2.55	2.54	2.65
597.8	5.57	156.91	597.5	-11.6	1.5	11.5	1.08	0.84	-7.20
622.8	5.68	157.12	622.4	-13.9	2.5	14.0	0.45	0.44	0.84
647.8	5.66	156.92	647.2	-16.2	3.4	16.4	0.11	-0.08	-0.80
672.9	5.70	157.29	672.1	-18.4	4.4	18.9	0.22	0.16	1.48
698.3	5.91	157.02	697.4	-20.8	5.4	21.5	0.83	0.82	-1.06
723.3	5.45	156.19	722.3	-23.1	6.4	23.9	1.87	-1.84	-3.32
748.2	5.70	155.55	747.1	-25.3	7.4	26.3	1.04	1.01	-2.57
773.1	5.51	155.44	771.8	-27.5	8.4	28.8	0.77	-0.76	-0.44
798.5	5.47	156.98	797.2	-29.7	9.4	31.2	0.60	-0.16	6.05
824.3	5.42	156.16	822.8	-32.0	10.3	33.6	0.36	-0.19	-3.18
849.3	5.45	155.69	847.7	-34.1	11.3	36.0	0.21	0.12	-1.88
874.1	5.40	156.69	872.4	-36.3	12.3	38.3	0.43	-0.20	4.03
899.0	4.66	154.93	897.2	-38.3	13.2	40.5	3.04	-2.97	-7.07
924.3	4.16	154.45	922.5	-40.0	14.0	42.4	1.98	-1.97	-1.90
949.3	4.45	153.76	947.4	-41.7	14.8	44.3	1.18	1.16	-2.76
974.2	4.59	154.75	972.2	-43.5	15.7	46.2	0.64	0.56	3.98
999.1	4.01	154.82	997.0	-45.2	16.4	48.1	2.33	-2.33	0.28
1,024.4	3.79	154.61	1,022.3	-46.7	17.2	49.8	0.87	-0.87	-0.83
1,049.3	3.38	156.56	1,047.2	-48.2	17.8	51.3	1.72	-1.64	7.82
1,074.3	3.20	156.62	1,072.1	-49.5	18.4	52.7	0.72	-0.72	0.24
1,099.5	3.17	156.46	1,097.2	-50.8	19.0	54.1	0.12	-0.12	-0.63
1,124.1	2.84	156.91	1,121.8	-51.9	19.5	55.4	1.35	-1.34	1.83
1,148.5	2.75	159.19	1,146.2	-53.0	19.9	56.6	0.58	-0.37	9.32
1,173.4	2.34	158.31	1,171.1	-54.1	20.3	57.7	1.65	-1.65	-3.53
1,198.2	2.37	159.66	1,195.9	-55.0	20.7	58.7	0.25	0.12	5.44
1,222.5	2.14	156.95	1,220.1	-55.9	21.0	59.7	1.04	-0.95	-11.16
1,249.3	2.02	159.19	1,246.9	-56.8	21.4	60.7	0.54	-0.45	8.35
1,273.6	1.84	161.18	1,271.2	-57.6	21.7	61.5	0.79	-0.74	8.21
1,298.0	1.73	160.26	1,295.6	-58.3	21.9	62.2	0.47	-0.45	-3.77
1,322.8	1.71	157.67	1,320.4	-59.0	22.2	63.0	0.32	-0.08	-10.44
1,349.9	1.56	159.37	1,347.5	-59.7	22.5	63.7	0.58	-0.55	6.27
1,374.3	1.48	162.68	1,371.8	-60.3	22.7	64.4	0.49	-0.33	13.58



Scientific Drilling International
Survey Report



Company:	Antero Resources	Local Co-ordinate Reference:	Well Prudence Unit 1H
Project:	Tyler County WV	TVD Reference:	Precision 525: 1188' GL + 19' KB @ 1207.0usft
Site:	Coastal 2 Pad: Banner/Prudence/Tabor	MD Reference:	Precision 525: 1188' GL + 19' KB @ 1207.0usft
Well:	Prudence Unit 1H	North Reference:	Grid
Wellbore:	Original Wellpath	Survey Calculation Method:	Minimum Curvature
Design:	As Drilled	Database:	Antero NE

Survey

Measured Depth (usft)	Inclination (°)	Azimuth (°)	Vertical Depth (usft)	+N/-S (usft)	+E/-W (usft)	Vertical Section (usft)	Dogleg Rate (°/100usft)	Build Rate (°/100usft)	Turn Rate (°/100usft)
1,399.0	1.37	159.40	1,396.5	-60.9	22.9	65.0	0.55	-0.45	-13.30
1,423.3	1.32	162.05	1,420.8	-61.5	23.1	65.6	0.33	-0.21	10.91
1,448.0	1.33	157.56	1,445.5	-62.0	23.3	66.1	0.42	0.04	-18.16
1,474.7	1.29	161.41	1,472.2	-62.6	23.5	66.8	0.36	-0.15	14.42
1,499.5	1.25	162.19	1,497.0	-63.1	23.7	67.3	0.18	-0.16	3.15
1,523.8	1.18	169.04	1,521.3	-63.6	23.8	67.8	0.66	-0.29	28.12
1,547.9	1.16	165.91	1,545.4	-64.1	23.9	68.3	0.28	-0.08	-13.00
1,572.2	1.15	165.57	1,569.7	-64.5	24.0	68.8	0.05	-0.04	-1.40
1,599.4	1.08	170.22	1,596.9	-65.1	24.1	69.3	0.42	-0.26	17.10
1,623.6	1.07	163.32	1,621.1	-65.5	24.2	69.8	0.54	-0.04	-28.52
1,647.9	1.07	169.14	1,645.4	-65.9	24.3	70.2	0.45	0.00	23.91
1,674.6	1.03	171.56	1,672.1	-66.4	24.4	70.7	0.22	-0.15	9.08
1,698.8	1.00	166.08	1,696.3	-66.8	24.5	71.1	0.42	-0.12	-22.61
1,724.0	1.03	170.76	1,721.5	-67.3	24.6	71.6	0.35	0.12	18.59
1,748.6	0.93	167.88	1,746.1	-67.7	24.7	72.0	0.45	-0.41	-11.71
1,773.2	0.84	170.56	1,770.7	-68.1	24.7	72.4	0.40	-0.37	10.90
1,799.8	0.83	162.20	1,797.3	-68.4	24.8	72.8	0.46	-0.04	-31.39
1,824.5	0.82	164.44	1,821.9	-68.8	24.9	73.1	0.14	-0.04	9.09
1,848.8	0.76	166.80	1,846.2	-69.1	25.0	73.4	0.28	-0.25	9.72
1,873.0	0.71	170.01	1,870.5	-69.4	25.1	73.8	0.27	-0.21	13.23
1,899.6	0.63	173.14	1,897.1	-69.7	25.1	74.1	0.33	-0.30	11.76
1,923.8	0.63	170.38	1,921.3	-70.0	25.2	74.3	0.13	0.00	-11.40
1,948.1	0.57	179.69	1,945.5	-70.2	25.2	74.6	0.47	-0.25	38.46
1,974.7	0.46	190.67	1,972.1	-70.5	25.2	74.8	0.55	-0.41	41.25
1,999.0	0.40	186.00	1,996.4	-70.6	25.1	75.0	0.29	-0.25	-19.23
2,023.3	0.39	214.94	2,020.8	-70.8	25.1	75.1	0.81	-0.04	118.70
2,049.2	0.45	211.07	2,046.7	-71.0	25.0	75.2	0.26	0.23	-14.94
2,074.4	0.26	210.72	2,071.8	-71.1	24.9	75.3	0.76	-0.76	-1.39
2,098.9	0.45	222.71	2,096.3	-71.2	24.8	75.4	0.83	0.77	48.88
2,124.6	0.42	226.64	2,122.1	-71.3	24.7	75.5	0.16	-0.12	15.27
2,148.9	0.37	222.34	2,146.4	-71.5	24.5	75.6	0.24	-0.21	-17.70
2,174.6	0.26	214.07	2,172.1	-71.6	24.5	75.6	0.46	-0.43	-32.14
2,198.8	0.35	227.50	2,196.3	-71.7	24.4	75.7	0.47	0.37	55.56
2,224.1	0.27	223.33	2,221.6	-71.8	24.3	75.8	0.33	-0.32	-16.48
2,249.3	0.28	253.43	2,246.8	-71.8	24.2	75.8	0.57	0.04	119.30
2,274.8	0.37	250.67	2,272.3	-71.9	24.0	75.8	0.36	0.35	-10.83
2,298.8	0.20	215.06	2,296.2	-71.9	23.9	75.8	0.99	-0.71	-148.68
2,324.1	0.25	231.07	2,321.5	-72.0	23.9	75.9	0.32	0.20	63.28
2,349.5	0.17	212.72	2,346.9	-72.1	23.8	75.9	0.41	-0.31	-72.19
2,373.8	0.15	217.64	2,371.2	-72.1	23.8	75.9	0.10	-0.08	20.24
2,399.9	0.03	297.08	2,397.3	-72.1	23.7	76.0	0.57	-0.46	304.37
2,424.5	0.15	280.64	2,421.9	-72.1	23.7	75.9	0.49	0.49	-66.88
2,449.4	0.26	275.71	2,446.8	-72.1	23.6	75.9	0.45	0.44	-19.82



Scientific Drilling International
Survey Report



Company:	Antero Resources	Local Co-ordinate Reference:	Well Prudence Unit 1H
Project:	Tyler County WV	TVD Reference:	Precision 525: 1188' GL + 19' KB @ 1207.0usft
Site:	Coastal 2 Pad: Banner/Prudence/Tabor	MD Reference:	Precision 525: 1188' GL + 19' KB @ 1207.0usft
Well:	Prudence Unit 1H	North Reference:	Grid
Wellbore:	Original Wellpath	Survey Calculation Method:	Minimum Curvature
Design:	As Drilled	Database:	Antero NE

Measured Depth (usft)	Inclination (°)	Azimuth (°)	Vertical Depth (usft)	+N/-S (usft)	+E/-W (usft)	Vertical Section (usft)	Dogleg Rate (°/100usft)	Build Rate (°/100usft)	Turn Rate (°/100usft)
2,474.9	0.17	251.92	2,472.3	-72.1	23.5	75.9	0.49	-0.35	-93.26
2,498.2	0.26	264.98	2,495.7	-72.1	23.4	75.9	0.44	0.39	55.91
2,524.0	0.36	288.57	2,521.4	-72.1	23.3	75.8	0.62	0.39	91.54
2,548.9	0.28	300.61	2,546.4	-72.1	23.2	75.7	0.42	-0.32	48.30
2,574.7	0.33	281.34	2,572.1	-72.0	23.1	75.6	0.44	0.19	-74.83
2,598.7	0.31	299.23	2,596.1	-72.0	22.9	75.5	0.42	-0.08	74.54
2,623.9	0.35	311.92	2,621.3	-71.9	22.8	75.4	0.33	0.16	50.44
2,649.5	0.41	278.11	2,646.9	-71.8	22.7	75.3	0.89	0.23	-131.97
2,674.9	0.59	263.34	2,672.3	-71.8	22.4	75.3	0.87	0.71	-58.15
2,699.1	0.48	307.20	2,696.5	-71.8	22.2	75.1	1.70	-0.45	181.31
2,724.2	0.57	327.63	2,721.6	-71.6	22.1	74.9	0.82	0.36	81.26
2,749.5	0.43	296.66	2,747.0	-71.5	21.9	74.7	1.18	-0.55	-122.27
2,774.5	0.59	268.96	2,771.9	-71.4	21.7	74.6	1.16	0.64	-111.16
2,799.7	0.50	321.20	2,797.1	-71.3	21.5	74.5	1.93	-0.36	207.22
2,822.2	0.55	280.74	2,819.6	-71.2	21.4	74.4	1.62	0.22	-179.34
2,849.7	0.51	290.07	2,847.1	-71.2	21.1	74.2	0.35	-0.15	33.95
2,874.1	0.52	281.57	2,871.5	-71.1	20.9	74.1	0.32	0.04	-34.82
2,899.2	0.50	292.70	2,896.6	-71.1	20.7	74.0	0.40	-0.08	44.32
2,923.6	0.58	303.31	2,921.0	-70.9	20.5	73.8	0.52	0.33	43.48
2,948.1	0.65	315.76	2,945.5	-70.8	20.3	73.6	0.62	0.29	50.90
2,972.8	0.61	306.76	2,970.2	-70.6	20.1	73.4	0.43	-0.16	-36.38
2,998.2	0.69	302.29	2,995.6	-70.4	19.8	73.1	0.37	0.32	-17.61
3,024.0	0.66	307.43	3,021.4	-70.3	19.6	72.9	0.26	-0.12	19.95
3,049.6	0.68	314.01	3,047.0	-70.1	19.4	72.6	0.31	0.08	25.66
3,072.9	0.72	311.02	3,070.3	-69.9	19.2	72.4	0.23	0.17	-12.84
3,099.1	0.68	313.08	3,096.5	-69.7	18.9	72.1	0.18	-0.15	7.88
3,124.8	0.75	319.09	3,122.2	-69.4	18.7	71.8	0.40	0.27	23.32
3,148.6	0.75	306.41	3,146.0	-69.2	18.5	71.5	0.70	0.00	-53.39
3,173.8	0.78	313.06	3,171.2	-69.0	18.2	71.3	0.37	0.12	26.36
3,199.7	0.74	316.76	3,197.1	-68.8	18.0	71.0	0.24	-0.15	14.26
3,224.5	0.74	299.79	3,221.9	-68.6	17.7	70.7	0.88	0.00	-68.62
3,249.0	0.69	290.75	3,246.4	-68.4	17.4	70.5	0.50	-0.20	-36.84
3,274.0	0.71	311.71	3,271.3	-68.3	17.2	70.3	1.02	0.08	84.04
3,299.0	0.77	323.32	3,296.4	-68.0	17.0	70.0	0.64	0.24	46.35
3,324.5	0.68	315.58	3,321.9	-67.8	16.8	69.7	0.52	-0.35	-30.36
3,349.5	0.52	320.59	3,346.9	-67.6	16.6	69.4	0.67	-0.64	20.06
3,373.1	0.57	295.07	3,370.5	-67.5	16.4	69.2	1.04	0.21	-107.95
3,398.2	0.53	308.15	3,395.6	-67.3	16.2	69.1	0.52	-0.16	52.11
3,423.3	0.61	331.87	3,420.7	-67.2	16.1	68.8	0.98	0.32	94.46
3,448.5	0.54	312.97	3,445.8	-67.0	15.9	68.6	0.80	-0.28	-75.18
3,473.3	0.52	294.07	3,470.7	-66.8	15.7	68.4	0.70	-0.08	-76.03
3,498.5	0.52	294.97	3,495.9	-66.7	15.5	68.3	0.03	0.00	3.57
3,523.3	0.47	300.59	3,520.7	-66.6	15.3	68.1	0.28	-0.20	22.62
3,548.7	0.51	310.34	3,546.1	-66.5	15.1	67.9	0.36	0.16	38.46



Scientific Drilling International
Survey Report



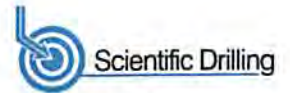
Company:	Antero Resources	Local Co-ordinate Reference:	Well Prudence Unit 1H
Project:	Tyler County WV	TVD Reference:	Precision 525: 1188' GL + 19' KB @ 1207.0usft
Site:	Coastal 2 Pad: Banner/Prudence/Tabor	MD Reference:	Precision 525: 1188' GL + 19' KB @ 1207.0usft
Well:	Prudence Unit 1H	North Reference:	Grid
Wellbore:	Original Wellpath	Survey Calculation Method:	Minimum Curvature
Design:	As Drilled	Database:	Antero NE

Survey

Measured Depth (usft)	Inclination (°)	Azimuth (°)	Vertical Depth (usft)	+N/-S (usft)	+E/-W (usft)	Vertical Section (usft)	Dogleg Rate (°/100usft)	Build Rate (°/100usft)	Turn Rate (°/100usft)
3,574.0	0.42	307.30	3,571.3	-66.4	15.0	67.8	0.37	-0.36	-12.03
3,598.2	0.45	312.88	3,595.6	-66.3	14.8	67.6	0.21	0.12	23.04
3,623.2	0.40	303.94	3,620.6	-66.1	14.7	67.5	0.33	-0.20	-35.67
3,648.8	0.41	305.60	3,646.2	-66.0	14.6	67.3	0.06	0.04	6.50
3,673.8	0.46	305.71	3,671.2	-65.9	14.4	67.2	0.20	0.20	0.44
3,698.6	0.48	326.36	3,696.0	-65.8	14.3	67.0	0.68	0.08	83.27
3,724.0	0.49	301.01	3,721.4	-65.6	14.1	66.8	0.84	0.04	-99.80
3,748.7	0.39	317.53	3,746.0	-65.5	14.0	66.6	0.65	-0.41	67.13
3,774.8	0.53	334.30	3,772.2	-65.4	13.8	66.4	0.74	0.54	64.15
3,799.4	0.53	308.12	3,796.8	-65.2	13.7	66.2	0.97	0.00	-106.25
3,824.1	0.48	305.33	3,821.5	-65.1	13.5	66.1	0.23	-0.20	-11.30
3,849.4	0.52	305.84	3,846.7	-64.9	13.4	65.9	0.16	0.16	2.02
3,874.7	0.66	309.00	3,872.0	-64.8	13.2	65.7	0.57	0.55	12.50
3,899.9	0.55	293.82	3,897.3	-64.6	12.9	65.5	0.77	-0.44	-60.12
3,923.9	0.53	307.02	3,921.3	-64.5	12.7	65.3	0.52	-0.08	54.98
3,949.8	0.26	309.66	3,947.2	-64.4	12.6	65.1	1.05	-1.04	10.21
3,973.4	0.63	278.18	3,970.7	-64.3	12.4	65.0	1.82	1.57	-133.45
3,998.6	0.37	305.64	3,996.0	-64.3	12.2	64.9	1.37	-1.03	108.75
4,023.9	0.60	302.83	4,021.2	-64.2	12.0	64.7	0.92	0.91	-11.13
4,049.7	0.45	303.44	4,047.0	-64.0	11.8	64.6	0.58	-0.58	2.36
4,074.4	0.45	307.91	4,071.7	-63.9	11.7	64.4	0.14	0.00	18.10
4,100.7	0.44	308.98	4,098.0	-63.8	11.5	64.2	0.05	-0.04	4.07
4,125.0	0.47	320.22	4,122.4	-63.7	11.4	64.1	0.39	0.12	46.20
4,148.6	0.46	315.98	4,146.0	-63.5	11.3	63.9	0.15	-0.04	-17.95
4,173.7	1.19	70.20	4,171.0	-63.4	11.4	63.8	5.76	2.92	456.15
4,199.2	2.82	78.97	4,196.5	-63.1	12.3	63.9	6.49	6.39	34.39
4,224.2	5.00	78.07	4,221.5	-62.8	14.0	64.0	8.71	8.71	-3.60
4,249.6	5.88	77.43	4,246.8	-62.3	16.3	64.3	3.47	3.47	-2.52
4,274.9	6.30	75.44	4,272.0	-61.7	18.9	64.5	1.85	1.66	-7.85
4,298.4	6.80	73.61	4,295.2	-60.9	21.5	64.6	2.31	2.14	-7.82
4,323.8	8.87	71.10	4,320.4	-59.9	24.8	64.6	8.26	8.15	-9.88
4,348.7	9.29	70.91	4,345.1	-58.6	28.5	64.5	1.69	1.68	-0.76
4,374.2	9.45	70.45	4,370.2	-57.2	32.4	64.5	0.69	0.63	-1.81
4,399.2	9.72	74.50	4,394.8	-56.0	36.4	64.5	2.91	1.08	16.21
4,424.9	9.82	77.01	4,420.2	-54.9	40.6	64.8	1.70	0.39	9.76
4,448.6	9.71	77.58	4,443.5	-54.0	44.6	65.1	0.62	-0.46	2.41
4,473.8	9.69	78.54	4,468.3	-53.1	48.7	65.6	0.65	-0.08	3.82
4,498.6	9.20	83.28	4,492.8	-52.5	52.7	66.2	3.70	-1.98	19.11
4,524.8	9.25	84.61	4,518.7	-52.1	56.9	67.1	0.83	0.19	5.07
4,549.6	9.17	84.47	4,543.2	-51.7	60.9	67.9	0.33	-0.32	-0.56
4,574.8	9.93	85.11	4,568.0	-51.3	65.0	68.9	3.04	3.01	2.54
4,599.5	11.15	85.89	4,592.3	-50.9	69.5	69.9	4.98	4.95	3.16
4,624.0	11.24	86.03	4,616.4	-50.6	74.3	71.1	0.38	0.37	0.57



Scientific Drilling International
Survey Report

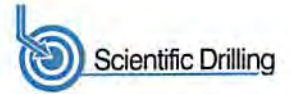


Company:	Antero Resources	Local Co-ordinate Reference:	Well Prudence Unit 1H
Project:	Tyler County WV	TVD Reference:	Precision 525: 1188' GL + 19' KB @ 1207.0usft
Site:	Coastal 2 Pad: Banner/Prudence/Tabor	MD Reference:	Precision 525: 1188' GL + 19' KB @ 1207.0usft
Well:	Prudence Unit 1H	North Reference:	Grid
Wellbore:	Original Wellpath	Survey Calculation Method:	Minimum Curvature
Design:	As Drilled	Database:	Antero NE

Measured Depth (usft)	Inclination (°)	Azimuth (°)	Vertical Depth (usft)	+N/-S (usft)	+E/-W (usft)	Vertical Section (usft)	Dogleg Rate (°/100usft)	Buld Rate (°/100usft)	Turn Rate (°/100usft)
4,649.9	11.58	85.82	4,641.7	-50.2	79.4	72.3	1.32	1.31	-0.81
4,674.3	12.55	85.31	4,665.6	-49.9	84.5	73.5	4.00	3.97	-2.09
4,699.6	13.08	84.64	4,690.2	-49.4	90.0	74.7	2.18	2.10	-2.66
4,724.2	13.31	82.56	4,714.2	-48.7	95.6	75.9	2.14	0.93	-8.45
4,748.9	13.98	81.62	4,738.2	-47.9	101.4	76.9	2.86	2.72	-3.81
4,774.0	15.36	79.12	4,762.5	-46.9	107.7	77.8	6.03	5.48	-9.94
4,799.3	15.54	78.22	4,786.9	-45.5	114.3	78.6	1.18	0.71	-3.56
4,824.1	15.49	77.45	4,810.8	-44.1	120.8	79.3	0.85	-0.20	-3.11
4,848.6	16.42	76.92	4,834.4	-42.6	127.3	79.9	3.84	3.79	-2.16
4,874.4	17.20	76.59	4,859.0	-40.9	134.6	80.5	3.05	3.03	-1.28
4,899.3	17.41	76.01	4,882.8	-39.2	141.8	81.0	1.09	0.84	-2.33
4,923.8	17.77	75.82	4,906.2	-37.4	149.0	81.5	1.49	1.47	-0.77
4,948.6	18.94	75.46	4,929.7	-35.4	156.5	82.0	4.75	4.73	-1.45
4,974.5	19.09	74.96	4,954.2	-33.3	164.7	82.5	0.86	0.58	-1.93
4,999.0	19.00	74.37	4,977.3	-31.2	172.4	82.9	0.87	-0.37	-2.41
5,023.8	19.75	74.39	5,000.7	-29.0	180.3	83.2	3.02	3.02	0.08
5,048.7	21.27	74.19	5,024.0	-26.6	188.7	83.6	6.12	6.11	-0.80
5,074.9	22.09	73.50	5,048.3	-23.9	198.0	83.9	3.28	3.13	-2.64
5,099.5	22.30	73.17	5,071.1	-21.2	206.9	84.1	0.99	0.85	-1.34
5,123.9	22.98	73.34	5,093.7	-18.5	215.9	84.3	2.80	2.79	0.70
5,150.0	23.56	73.77	5,117.6	-15.6	225.8	84.6	2.31	2.22	1.65
5,174.1	23.09	73.48	5,139.8	-12.9	235.0	84.8	2.01	-1.95	-1.20
5,199.9	23.29	74.65	5,163.5	-10.1	244.7	85.2	1.95	0.77	4.53
5,223.1	24.12	76.48	5,184.7	-7.8	253.8	85.8	4.79	3.58	7.90
5,249.2	24.10	76.63	5,208.6	-5.3	264.1	86.6	0.25	-0.08	0.57
5,273.4	23.92	76.24	5,230.6	-3.0	273.7	87.4	0.99	-0.75	-1.62
5,299.6	24.20	76.46	5,254.6	-0.5	284.1	88.2	1.12	1.07	0.84
5,323.5	24.75	76.52	5,276.4	1.8	293.7	88.9	2.30	2.30	0.25
5,349.3	24.65	75.80	5,299.8	4.4	304.2	89.7	1.23	-0.39	-2.79
5,374.4	24.98	75.40	5,322.6	7.0	314.4	90.4	1.48	1.31	-1.59
5,398.9	26.01	75.85	5,344.7	9.6	324.6	91.0	4.29	4.22	1.84
5,424.6	27.18	76.49	5,367.6	12.4	335.8	91.9	4.69	4.55	2.49
5,449.8	27.42	76.45	5,390.1	15.1	347.0	92.8	0.95	0.95	-0.16
5,473.9	27.84	76.22	5,411.4	17.7	357.9	93.6	1.80	1.74	-0.95
5,499.7	28.05	75.63	5,434.2	20.7	369.6	94.4	1.34	0.81	-2.28
5,523.3	27.56	74.83	5,455.1	23.5	380.3	95.1	2.61	-2.08	-3.39
5,549.1	27.52	74.12	5,478.0	26.7	391.7	95.6	1.28	-0.16	-2.76
5,574.4	27.38	74.68	5,500.4	29.8	403.0	96.0	1.16	-0.55	2.22
5,598.7	27.42	75.07	5,522.0	32.7	413.8	96.6	0.76	0.16	1.60
5,625.0	26.38	74.88	5,545.5	35.8	425.3	97.2	3.96	-3.95	-0.72
5,649.2	26.60	75.34	5,567.1	38.6	435.7	97.8	1.25	0.91	1.90
5,673.7	27.22	76.59	5,588.9	41.3	446.4	98.6	3.42	2.53	5.10
5,700.0	26.95	76.43	5,612.4	44.1	458.1	99.5	1.06	-1.02	-0.61



Scientific Drilling International
Survey Report



Company:	Antero Resources	Local Co-ordinate Reference:	Well Prudence Unit 1H
Project:	Tyler County WV	TVD Reference:	Precision 525: 1188' GL + 19' KB @ 1207.0usft
Site:	Coastal 2 Pad: Banner/Prudence/Tabor	MD Reference:	Precision 525: 1188' GL + 19' KB @ 1207.0usft
Well:	Prudence Unit 1H	North Reference:	Grid
Wellbore:	Original Wellpath	Survey Calculation Method:	Minimum Curvature
Design:	As Drilled	Database:	Antero NE

Survey

Measured Depth (usft)	Inclination (°)	Azimuth (°)	Vertical Depth (usft)	+N/-S (usft)	+E/-W (usft)	Vertical Section (usft)	Dogleg Rate (°/100usft)	Build Rate (°/100usft)	Turn Rate (°/100usft)	
5,724.9	26.67	76.26	5,634.6	46.7	469.0	100.4	1.17	-1.12	-0.68	
5,749.5	26.36	77.41	5,656.6	49.2	479.7	101.3	2.44	-1.26	4.69	
5,774.3	26.58	77.93	5,678.8	51.6	490.5	102.4	1.29	0.89	2.09	
5,799.2	25.96	77.48	5,701.1	53.9	501.3	103.5	2.62	-2.49	-1.81	
5,824.4	25.96	77.80	5,723.7	56.3	512.0	104.5	0.56	0.00	1.27	
5,849.4	26.16	78.82	5,746.3	58.5	522.8	105.7	1.96	0.80	4.07	
5,874.3	25.91	78.76	5,768.6	60.6	533.5	107.0	1.01	-1.01	-0.24	
5,898.8	25.40	78.11	5,790.7	62.8	543.9	108.2	2.38	-2.08	-2.66	
5,923.6	25.64	78.25	5,813.1	64.9	554.4	109.4	1.00	0.97	0.56	
5,948.5	25.92	78.26	5,835.5	67.1	565.0	110.5	1.12	1.12	0.04	
5,974.5	25.33	77.79	5,858.9	69.5	575.9	111.7	2.41	-2.27	-1.81	
6,000.0	25.39	77.34	5,882.0	71.8	586.6	112.8	0.79	0.23	-1.76	
6,023.4	26.16	77.72	5,903.1	74.0	596.6	113.7	3.36	3.28	1.62	
6,049.6	26.67	77.45	5,926.5	76.5	607.9	114.9	2.00	1.95	-1.03	
6,074.5	26.52	76.88	5,948.8	79.0	618.8	115.9	1.19	-0.60	-2.29	
6,099.7	26.98	76.76	5,971.3	81.6	629.8	116.8	1.84	1.83	-0.48	
6,124.0	27.42	76.04	5,992.9	84.2	640.6	117.7	2.26	1.81	-2.96	
6,148.9	27.26	75.15	6,015.0	87.1	651.7	118.4	1.76	-0.64	-3.57	
6,173.6	27.01	74.54	6,037.0	90.0	662.6	118.9	1.52	-1.01	-2.47	
6,199.3	26.67	75.76	6,059.9	93.0	673.8	119.6	2.52	-1.32	4.75	
6,223.8	26.79	76.34	6,081.9	95.6	684.5	120.3	1.17	0.49	2.36	
6,248.4	26.14	76.15	6,103.9	98.2	695.2	121.2	2.67	-2.64	-0.77	
6,274.7	25.56	77.25	6,127.5	100.9	706.3	122.1	2.87	-2.21	4.19	
6,299.9	25.33	78.23	6,150.2	103.2	716.9	123.2	1.90	-0.91	3.89	
6,324.1	25.28	78.70	6,172.2	105.2	727.1	124.3	0.85	-0.21	1.94	
6,348.9	25.13	77.60	6,194.5	107.4	737.4	125.5	1.99	-0.61	-4.45	
6,374.8	26.03	77.52	6,218.0	109.8	748.3	126.5	3.47	3.46	-0.31	
6,399.2	26.54	76.96	6,239.8	112.2	758.8	127.5	2.33	2.10	-2.30	
6,425.0	26.54	75.80	6,262.9	114.9	770.0	128.4	2.01	0.00	-4.49	
6,449.4	26.43	75.69	6,284.7	117.6	780.6	129.1	0.49	-0.45	-0.45	
6,474.0	26.34	77.03	6,306.7	120.2	791.2	129.9	2.45	-0.37	5.46	
6,499.1	26.14	76.78	6,329.3	122.7	802.0	130.9	0.91	-0.79	-0.99	
6,524.9	26.27	75.64	6,352.4	125.4	813.1	131.7	2.02	0.51	-4.43	
6,549.0	26.07	76.63	6,374.1	128.0	823.4	132.5	1.99	-0.83	4.10	
6,574.6	25.74	78.48	6,397.1	130.4	834.3	133.5	3.41	-1.29	7.23	
6,599.8	26.16	78.57	6,419.8	132.6	845.1	134.8	1.67	1.66	0.36	
6,624.4	25.97	77.62	6,441.8	134.8	855.7	135.9	1.87	-0.77	-3.87	
6,649.0	25.87	76.48	6,464.0	137.2	866.2	136.9	2.06	-0.41	-4.63	
6,673.8	25.46	75.07	6,486.4	139.8	876.6	137.6	2.96	-1.65	-5.68	
6,698.8	25.09	74.10	6,508.9	142.7	886.9	138.1	2.22	-1.48	-3.88	
6,712.0	24.93	74.11	6,520.9	144.2	892.2	138.3	1.22	-1.22	0.07	
Last SDI Gyro @ 6712 MD										
6,712.7	24.92	74.11	6,521.6	144.3	892.5	138.3	1.22	-1.22	0.07	
6,795.0	24.90	76.56	6,596.2	153.1	926.1	140.3	1.25	-0.02	2.98	



Scientific Drilling International
Survey Report



Company:	Antero Resources	Local Co-ordinate Reference:	Well Prudence Unit 1H
Project:	Tyler County WV	TVD Reference:	Precision 525: 1188' GL + 19' KB @ 1207.0usft
Site:	Coastal 2 Pad: Banner/Prudence/Tabor	MD Reference:	Precision 525: 1188' GL + 19' KB @ 1207.0usft
Well:	Prudence Unit 1H	North Reference:	Grid
Wellbore:	Original Wellpath	Survey Calculation Method:	Minimum Curvature
Design:	As Drilled	Database:	Antero NE

Survey									
Measured Depth (usft)	Inclination (°)	Azimuth (°)	Vertical Depth (usft)	+N/-S (usft)	+E/-W (usft)	Vertical Section (usft)	Dogleg Rate (°/100usft)	Build Rate (°/100usft)	Turn Rate (°/100usft)
6,840.0	24.60	79.22	6,637.0	157.0	944.5	142.2	2.56	-0.67	5.91
6,885.0	24.22	82.50	6,678.0	160.0	962.8	145.1	3.13	-0.84	7.29
6,914.0	24.37	91.72	6,704.5	160.6	974.7	148.2	13.07	0.51	31.78
Sycamore @ 6,914 MD									
6,929.0	24.66	96.39	6,718.1	160.1	980.9	150.5	13.07	1.95	31.16
6,974.0	26.23	106.15	6,758.8	156.3	999.8	159.9	9.94	3.49	21.69
7,019.0	30.86	113.90	6,798.3	148.9	1,019.9	173.2	13.16	10.29	17.22
7,064.0	34.39	119.26	6,836.2	138.0	1,041.6	190.3	10.13	7.84	11.91
7,103.0	35.85	124.73	6,868.1	126.1	1,060.6	207.5	8.90	3.75	14.03
MiddleSex @ 7,103 MD									
7,109.0	36.10	125.54	6,873.0	124.0	1,063.5	210.3	8.90	4.11	13.44
7,153.0	38.59	129.52	6,907.9	107.8	1,084.6	232.3	7.88	5.66	9.05
7,198.0	41.74	131.87	6,942.3	88.8	1,106.6	257.1	7.77	7.00	5.22
7,243.0	45.98	133.65	6,974.8	67.7	1,129.5	284.3	9.81	9.42	3.96
7,287.0	50.75	137.92	7,004.0	44.1	1,152.3	313.8	13.04	10.84	9.70
Burkett @ 7,287 MD									
7,288.0	50.86	138.01	7,004.6	43.5	1,152.9	314.5	13.04	11.01	9.00
7,331.0	54.52	142.19	7,030.7	17.3	1,174.8	346.2	11.50	8.52	9.72
Tully @ 7,331 MD									
7,332.0	54.61	142.28	7,031.3	16.6	1,175.3	347.0	11.50	8.69	9.25
7,377.0	58.82	146.04	7,056.0	-13.9	1,197.3	382.8	11.67	9.36	8.36
7,422.0	63.49	149.14	7,077.7	-47.2	1,218.3	420.9	12.00	10.38	6.89
7,467.0	67.76	152.54	7,096.3	-82.9	1,238.3	461.1	11.72	9.49	7.56
MRCL_HOT @ 7,467 MD									
7,512.0	72.11	155.31	7,111.7	-120.9	1,256.9	503.0	11.26	9.67	6.16
7,556.0	75.69	157.62	7,123.9	-159.7	1,273.7	545.0	9.57	8.14	5.25
7,601.0	80.64	159.60	7,133.1	-200.7	1,289.8	589.0	11.81	11.00	4.40
7,636.0	83.42	161.42	7,138.0	-233.3	1,301.3	623.6	9.47	7.94	5.20
7,673.0	88.17	161.83	7,140.7	-268.3	1,313.0	660.5	12.89	12.84	1.11
7,719.0	89.72	162.98	7,141.5	-312.2	1,326.9	706.5	4.20	-3.37	2.50
7,808.0	89.25	160.26	7,142.3	-396.6	1,354.9	795.5	3.10	-0.53	-3.06
7,898.0	91.20	161.03	7,142.0	-481.5	1,384.8	885.5	2.33	2.17	0.86
7,988.0	91.52	161.00	7,139.8	-566.6	1,414.0	975.4	0.36	0.36	-0.03
8,077.0	90.65	161.85	7,138.2	-651.0	1,442.4	1,064.4	1.37	-0.98	0.96
8,167.0	89.90	163.96	7,137.7	-737.0	1,468.8	1,154.4	2.49	-0.83	2.34
8,256.0	90.38	164.60	7,137.5	-822.6	1,492.9	1,243.3	0.90	0.54	0.72
8,346.0	89.54	163.30	7,137.6	-909.1	1,517.8	1,333.3	1.72	-0.93	-1.44
8,436.0	89.80	162.56	7,138.1	-995.2	1,544.2	1,423.2	0.87	0.29	-0.82
8,525.0	89.53	161.82	7,138.6	-1,079.9	1,571.5	1,512.2	0.89	-0.30	-0.83
8,615.0	90.17	161.58	7,138.9	-1,165.3	1,599.7	1,602.2	0.76	0.71	-0.27
8,705.0	90.07	160.90	7,138.7	-1,250.6	1,628.7	1,692.2	0.76	-0.11	-0.76
8,794.0	89.67	159.98	7,138.9	-1,334.4	1,658.5	1,781.2	1.13	-0.45	-1.03
8,884.0	89.70	163.27	7,139.4	-1,419.8	1,686.8	1,871.2	3.66	0.03	3.66
8,973.0	89.43	163.91	7,140.0	-1,505.2	1,712.0	1,960.1	0.78	-0.30	0.72



Scientific Drilling International
Survey Report



Company:	Antero Resources	Local Co-ordinate Reference:	Well Prudence Unit 1H
Project:	Tyler County WV	TVD Reference:	Precision 525: 1188' GL + 19' KB @ 1207.0usft
Site:	Coastal 2 Pad: Banner/Prudence/Tabor	MD Reference:	Precision 525: 1188' GL + 19' KB @ 1207.0usft
Well:	Prudence Unit 1H	North Reference:	Grid
Wellbore:	Original Wellpath	Survey Calculation Method:	Minimum Curvature
Design:	As Drilled	Database:	Antero NE

Survey										
Measured Depth (usft)	Inclination (°)	Azimuth (°)	Vertical Depth (usft)	+N/-S (usft)	+E/-W (usft)	Vertical Section (usft)	Dogleg Rate (°/100usft)	Build Rate (°/100usft)	Turn Rate (°/100usft)	
9,063.0	89.57	160.84	7,140.8	-1,591.0	1,739.2	2,050.1	3.41	0.16	-3.41	
9,152.0	90.27	159.81	7,140.9	-1,674.8	1,769.2	2,139.1	1.40	0.79	-1.16	
9,242.0	90.07	160.27	7,140.7	-1,759.4	1,799.9	2,229.0	0.56	-0.22	0.51	
9,332.0	89.33	159.21	7,141.2	-1,843.8	1,831.1	2,319.0	1.44	-0.82	-1.18	
9,421.0	90.27	160.23	7,141.5	-1,927.3	1,861.9	2,407.9	1.56	1.06	1.15	
9,511.0	90.04	158.73	7,141.2	-2,011.5	1,893.5	2,497.8	1.69	-0.26	-1.67	
9,600.0	89.63	160.56	7,141.5	-2,095.0	1,924.4	2,586.7	2.11	-0.46	2.06	
9,690.0	88.56	158.72	7,142.9	-2,179.4	1,955.7	2,676.6	2.36	-1.19	-2.04	
9,779.0	89.90	163.14	7,144.1	-2,263.4	1,984.8	2,765.6	5.19	1.51	4.97	
9,869.0	89.30	161.34	7,144.7	-2,349.1	2,012.2	2,855.6	2.11	-0.67	-2.00	
9,959.0	90.34	162.99	7,145.0	-2,434.8	2,039.8	2,945.6	2.17	1.16	1.83	
10,048.0	90.44	164.91	7,144.4	-2,520.3	2,064.4	3,034.5	2.16	0.11	2.16	
10,138.0	89.77	164.31	7,144.2	-2,607.1	2,088.3	3,124.4	1.00	-0.74	-0.67	
10,228.0	89.46	162.86	7,144.8	-2,693.4	2,113.7	3,214.4	1.65	-0.34	-1.61	
10,317.0	89.56	164.11	7,145.6	-2,778.8	2,139.0	3,303.3	1.41	0.11	1.40	
10,407.0	89.83	165.06	7,146.1	-2,865.5	2,162.9	3,393.2	1.10	0.30	1.06	
10,496.0	88.39	163.87	7,147.5	-2,951.3	2,186.8	3,482.2	2.10	-1.62	-1.34	
10,586.0	88.59	165.33	7,149.8	-3,038.0	2,210.7	3,572.0	1.64	0.22	1.62	
10,676.0	88.49	163.61	7,152.1	-3,124.7	2,234.8	3,661.9	1.91	-0.11	-1.91	
10,765.0	89.06	161.35	7,154.0	-3,209.5	2,261.5	3,750.9	2.62	0.64	-2.54	
10,855.0	89.63	159.72	7,155.1	-3,294.4	2,291.5	3,840.8	1.92	0.63	-1.81	
10,945.0	89.19	159.03	7,156.0	-3,378.6	2,323.2	3,930.7	0.91	-0.49	-0.77	
11,035.0	90.30	158.55	7,156.4	-3,462.5	2,355.8	4,020.6	1.34	1.23	-0.53	
11,124.0	88.75	158.50	7,157.1	-3,545.3	2,388.4	4,109.4	1.74	-1.74	-0.06	
11,214.0	90.03	161.07	7,158.1	-3,629.8	2,419.5	4,199.3	3.19	1.42	2.86	
11,303.0	89.36	163.32	7,158.6	-3,714.5	2,446.7	4,288.3	2.64	-0.75	2.53	
11,393.0	89.53	163.95	7,159.4	-3,800.8	2,472.0	4,378.3	0.73	0.19	0.70	
11,483.0	89.90	162.24	7,159.9	-3,886.9	2,498.2	4,468.3	1.94	0.41	-1.90	
11,572.0	89.56	162.25	7,160.3	-3,971.7	2,525.3	4,557.3	0.38	-0.38	0.01	
11,662.0	89.66	162.16	7,160.9	-4,057.4	2,552.8	4,647.3	0.15	0.11	-0.10	
11,752.0	89.26	163.15	7,161.8	-4,143.3	2,579.7	4,737.3	1.19	-0.44	1.10	
11,841.0	89.70	163.18	7,162.6	-4,228.5	2,605.4	4,826.2	0.50	0.49	0.03	
11,931.0	90.30	164.43	7,162.6	-4,314.9	2,630.5	4,916.2	1.54	0.67	1.39	
12,021.0	89.96	161.73	7,162.4	-4,401.0	2,656.7	5,006.2	3.02	-0.38	-3.00	
12,110.0	89.49	160.91	7,162.8	-4,485.3	2,685.2	5,095.2	1.06	-0.53	-0.92	
12,200.0	90.23	161.73	7,163.0	-4,570.6	2,714.1	5,185.1	1.23	0.82	0.91	
12,290.0	88.89	163.53	7,163.7	-4,656.4	2,740.9	5,275.1	2.49	-1.49	2.00	
12,379.0	88.31	162.36	7,165.9	-4,741.5	2,767.0	5,364.1	1.47	-0.65	-1.31	
12,469.0	90.50	164.00	7,166.8	-4,827.6	2,793.1	5,454.1	3.04	2.43	1.82	
12,559.0	90.60	163.03	7,165.9	-4,913.9	2,818.6	5,544.0	1.08	0.11	-1.08	
12,648.0	90.03	163.57	7,165.5	-4,999.2	2,844.2	5,633.0	0.88	-0.64	0.61	
12,738.0	89.90	162.61	7,165.5	-5,085.3	2,870.4	5,723.0	1.08	-0.14	-1.07	
12,828.0	89.79	161.69	7,165.7	-5,171.0	2,897.8	5,813.0	0.81	-0.12	-0.80	



Scientific Drilling International
Survey Report



Company:	Antero Resources	Local Co-ordinate Reference:	Well Prudence Unit 1H
Project:	Tyler County WV	TVD Reference:	Precision 525: 1188' GL + 19' KB @ 1207.0usft
Site:	Coastal 2 Pad: Banner/Prudence/Tabor	MD Reference:	Precision 525: 1188' GL + 19' KB @ 1207.0usft
Well:	Prudence Unit 1H	North Reference:	Grid
Wellbore:	Original Wellpath	Survey Calculation Method:	Minimum Curvature
Design:	As Drilled	Database:	Antero NE

Survey									
Measured Depth (usft)	Inclination (°)	Azimuth (°)	Vertical Depth (usft)	+N/-S (usft)	+E/-W (usft)	Vertical Section (usft)	Dogleg Rate (°/100usft)	Build Rate (°/100usft)	Turn Rate (°/100usft)
12,917.0	89.73	161.11	7,166.1	-5,255.4	2,926.0	5,902.0	0.88	-0.07	-0.88
13,007.0	89.96	161.29	7,166.4	-5,340.6	2,955.0	5,992.0	0.32	0.26	0.20
13,097.0	89.79	160.61	7,166.6	-5,425.7	2,984.4	6,082.0	0.78	-0.19	-0.76
13,186.0	89.83	160.47	7,166.9	-5,509.6	3,014.1	6,170.9	0.16	0.04	-0.16
13,276.0	90.30	160.92	7,166.8	-5,594.5	3,043.8	6,260.9	0.72	0.52	0.50
13,365.0	90.27	160.65	7,166.3	-5,678.6	3,073.1	6,349.9	0.31	-0.03	-0.30
13,455.0	89.29	157.52	7,166.7	-5,762.6	3,105.2	6,439.7	3.64	-1.09	-3.48
13,545.0	89.33	158.51	7,167.7	-5,846.1	3,138.9	6,529.5	1.10	0.04	1.10
13,634.0	91.37	162.62	7,167.2	-5,930.0	3,168.5	6,618.5	5.16	2.29	4.62
13,724.0	91.07	161.30	7,165.3	-6,015.5	3,196.4	6,708.4	1.50	-0.33	-1.47
13,814.0	90.74	162.36	7,163.9	-6,101.0	3,224.5	6,798.4	1.23	-0.37	1.18
13,903.0	90.37	163.76	7,163.0	-6,186.2	3,250.4	6,887.4	1.63	-0.42	1.57
13,993.0	89.86	163.76	7,162.8	-6,272.6	3,275.6	6,977.4	0.57	-0.57	0.00
14,083.0	89.39	164.49	7,163.4	-6,359.1	3,300.2	7,067.3	0.96	-0.52	0.81
14,172.0	88.45	162.15	7,165.1	-6,444.4	3,325.7	7,156.3	2.83	-1.06	-2.63
14,262.0	89.63	160.67	7,166.6	-6,529.7	3,354.4	7,246.2	2.10	1.31	-1.64
14,351.0	90.07	162.55	7,166.8	-6,614.1	3,382.5	7,335.2	2.17	0.49	2.11
14,441.0	90.27	162.88	7,166.6	-6,700.0	3,409.2	7,425.2	0.43	0.22	0.37
14,531.0	90.30	162.37	7,166.1	-6,785.9	3,436.1	7,515.2	0.57	0.03	-0.57
14,620.0	89.39	160.70	7,166.4	-6,870.4	3,464.3	7,604.2	2.14	-1.02	-1.88
14,710.0	90.64	162.69	7,166.3	-6,955.8	3,492.5	7,694.2	2.61	1.39	2.21
14,800.0	90.40	162.60	7,165.5	-7,041.7	3,519.4	7,784.2	0.28	-0.27	-0.10
14,889.0	89.97	162.35	7,165.2	-7,126.6	3,546.2	7,873.2	0.56	-0.48	-0.28
14,979.0	89.80	161.77	7,165.4	-7,212.2	3,573.9	7,963.2	0.67	-0.19	-0.64
15,068.0	89.97	161.13	7,165.6	-7,296.6	3,602.2	8,052.2	0.74	0.19	-0.72
15,158.0	90.60	161.45	7,165.1	-7,381.8	3,631.1	8,142.2	0.79	0.70	0.36
15,248.0	90.74	161.02	7,164.1	-7,467.0	3,660.0	8,232.2	0.50	0.16	-0.48
15,338.0	89.73	156.76	7,163.7	-7,551.0	3,692.4	8,322.0	4.86	-1.12	-4.73
15,427.0	89.90	157.79	7,164.0	-7,633.0	3,726.8	8,410.7	1.17	0.19	1.16
15,517.0	90.54	159.80	7,163.7	-7,716.9	3,759.4	8,500.5	2.34	0.71	2.23
15,606.0	91.58	163.74	7,162.0	-7,801.4	3,787.2	8,589.5	4.58	1.17	4.43
15,696.0	90.98	163.81	7,160.0	-7,887.8	3,812.4	8,679.4	0.67	-0.67	0.08
15,786.0	90.20	164.90	7,159.1	-7,974.5	3,836.6	8,769.4	1.49	-0.87	1.21
15,875.0	90.61	167.02	7,158.4	-8,060.8	3,858.2	8,858.1	2.43	0.46	2.38
15,965.0	90.04	166.40	7,157.9	-8,148.4	3,878.9	8,947.8	0.94	-0.63	-0.69
16,055.0	89.43	163.75	7,158.3	-8,235.4	3,902.1	9,037.7	3.02	-0.68	-2.94
16,144.0	89.94	166.29	7,158.8	-8,321.3	3,925.1	9,126.6	2.91	0.57	2.85
16,234.0	90.10	165.76	7,158.8	-8,408.7	3,946.8	9,216.4	0.62	0.18	-0.59
16,323.0	89.70	164.71	7,159.0	-8,494.7	3,969.5	9,305.2	1.26	-0.45	-1.18
16,413.0	88.49	160.73	7,160.4	-8,580.6	3,996.2	9,395.2	4.62	-1.34	-4.42
16,503.0	88.49	160.53	7,162.8	-8,665.5	4,026.1	9,485.1	0.22	0.00	-0.22
16,592.0	89.13	158.84	7,164.6	-8,749.0	4,056.9	9,574.0	2.03	0.72	-1.90
16,682.0	91.48	162.73	7,164.1	-8,833.9	4,086.6	9,664.0	5.05	2.61	4.32
16,772.0	91.14	161.68	7,162.1	-8,919.6	4,114.1	9,753.9	1.23	-0.38	-1.17



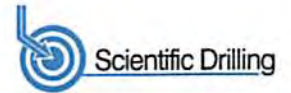
Scientific Drilling International
Survey Report



Company:	Antero Resources	Local Co-ordinate Reference:	Well Prudence Unit 1H
Project:	Tyler County WV	TVD Reference:	Precision 525: 1188' GL + 19' KB @ 1207.0usft
Site:	Coastal 2 Pad: Banner/Prudence/Tabor	MD Reference:	Precision 525: 1188' GL + 19' KB @ 1207.0usft
Well:	Prudence Unit 1H	North Reference:	Grid
Wellbore:	Original Wellpath	Survey Calculation Method:	Minimum Curvature
Design:	As Drilled	Database:	Antero NE

Measured Depth (usft)	Inclination (°)	Azimuth (°)	Vertical Depth (usft)	+N/-S (usft)	+E/-W (usft)	Vertical Section (usft)	Dogleg Rate (°/100usft)	Build Rate (°/100usft)	Turn Rate (°/100usft)
16,862.0	91.08	161.43	7,160.3	-9,005.0	4,142.5	9,843.9	0.29	-0.07	-0.28
16,951.0	91.28	162.44	7,158.5	-9,089.5	4,170.1	9,932.9	1.16	0.22	1.13
17,041.0	91.41	163.01	7,156.4	-9,175.5	4,196.8	10,022.9	0.65	0.14	0.63
17,131.0	89.80	160.91	7,155.4	-9,261.0	4,224.7	10,112.9	2.94	-1.79	-2.33
17,220.0	89.73	158.95	7,155.8	-9,344.6	4,255.2	10,201.8	2.20	-0.08	-2.20
17,310.0	90.84	159.90	7,155.3	-9,428.9	4,286.9	10,291.7	1.62	1.23	1.06
17,400.0	91.31	156.37	7,153.7	-9,512.4	4,320.4	10,381.5	3.96	0.52	-3.92
17,489.0	91.31	160.30	7,151.6	-9,595.0	4,353.2	10,470.2	4.41	0.00	4.42
17,579.0	89.90	161.88	7,150.7	-9,680.2	4,382.4	10,560.2	2.35	-1.57	1.76
17,669.0	89.70	162.84	7,151.0	-9,765.9	4,409.7	10,650.2	1.09	-0.22	1.07
17,758.0	89.30	161.49	7,151.8	-9,850.7	4,436.9	10,739.2	1.58	-0.45	-1.52
17,848.0	90.07	160.53	7,152.3	-9,935.8	4,466.2	10,829.2	1.37	0.86	-1.07
17,937.0	89.63	158.41	7,152.5	-10,019.1	4,497.4	10,918.1	2.43	-0.49	-2.38
18,027.0	89.73	160.17	7,153.0	-10,103.3	4,529.2	11,008.0	1.96	0.11	1.96
18,117.0	90.17	163.12	7,153.1	-10,188.7	4,557.6	11,098.0	3.31	0.49	3.28
18,206.0	90.10	162.09	7,152.9	-10,273.6	4,584.2	11,187.0	1.16	-0.08	-1.16
18,296.0	89.83	160.19	7,152.9	-10,358.8	4,613.3	11,277.0	2.13	-0.30	-2.11
18,386.0	89.43	160.94	7,153.5	-10,443.7	4,643.2	11,366.9	0.94	-0.44	0.83
18,475.0	90.00	162.16	7,153.9	-10,528.1	4,671.4	11,455.9	1.51	0.64	1.37
18,565.0	90.81	165.35	7,153.3	-10,614.5	4,696.6	11,545.9	3.66	0.90	3.54
18,655.0	88.56	163.03	7,153.8	-10,701.1	4,721.1	11,635.8	3.59	-2.50	-2.58
18,744.0	88.15	161.64	7,156.4	-10,785.8	4,748.1	11,724.7	1.63	-0.46	-1.56
18,834.0	88.19	160.96	7,159.2	-10,871.0	4,776.9	11,814.7	0.76	0.04	-0.76
18,924.0	88.72	160.59	7,161.7	-10,956.0	4,806.5	11,904.6	0.72	0.59	-0.41
19,014.0	89.70	161.20	7,162.9	-11,041.0	4,836.0	11,994.6	1.28	1.09	0.68
Last SDI MWD @ 19014 MD									
19,078.0	89.70	161.20	7,163.2	-11,101.6	4,856.6	12,058.6	0.00	0.00	0.00
Projection To Bit @ 19078 MD / 7163 TVD									

Target Name	Dip Angle (°)	Dip Dir. (°)	TVD (usft)	+N/-S (usft)	+E/-W (usft)	Northing (usft)	Easting (usft)	Latitude	Longitude
PBHL Prudence Unit 1H	0.00	0.00	7,140.0	-11,131.3	4,848.3	14,306,995.81	1,722,636.73	39° 23' 52.958 N	80° 42' 32.247 W
- actual wellpath misses target center by 38.6usft at 19078.0usft MD (7163.2 TVD, -11101.6 N, 4856.6 E)									
- Point									



Company:	Antero Resources	Local Co-ordinate Reference:	Well Prudence Unit 1H
Project:	Tyler County WV	TVD Reference:	Precision 525: 1188' GL + 19' KB @ 1207.0usft
Site:	Coastal 2 Pad: Banner/Prudence/Tabor	MD Reference:	Precision 525: 1188' GL + 19' KB @ 1207.0usft
Well:	Prudence Unit 1H	North Reference:	Grid
Wellbore:	Original Wellpath	Survey Calculation Method:	Minimum Curvature
Design:	As Drilled	Database:	Antero NE

Formations						
Measured Depth (usft)	Vertical Depth (usft)	Name	Lithology	Dip (°)	Dip Direction (°)	
6,914.0	6,704.5	Sycamore @ 6,914 MD		0.00		
7,103.0	6,868.1	MiddleSex @ 7,103 MD		0.00		
7,287.0	7,004.0	Burkett @ 7,287 MD		0.00		
7,331.0	7,030.7	Tully @ 7,331 MD		0.00		
7,467.0	7,096.3	MRCL_HOT @ 7,467 MD		0.00		

Design Annotations					
Measured Depth (usft)	Vertical Depth (usft)	Local Coordinates		Comment	
		+N/-S (usft)	+E/-W (usft)		
6,712.0	6,520.9	144.2	892.2	Last SDI Gyro @ 6712 MD	
19,014.0	7,162.9	-11,041.0	4,836.0	Last SDI MWD @ 19014 MD	
19,078.0	7,163.2	-11,101.6	4,856.6	Projection To Bit @ 19078 MD / 7163 TVD	

Checked By: _____ Approved By: _____ Date: _____