

LATITUDE 39°27'30"

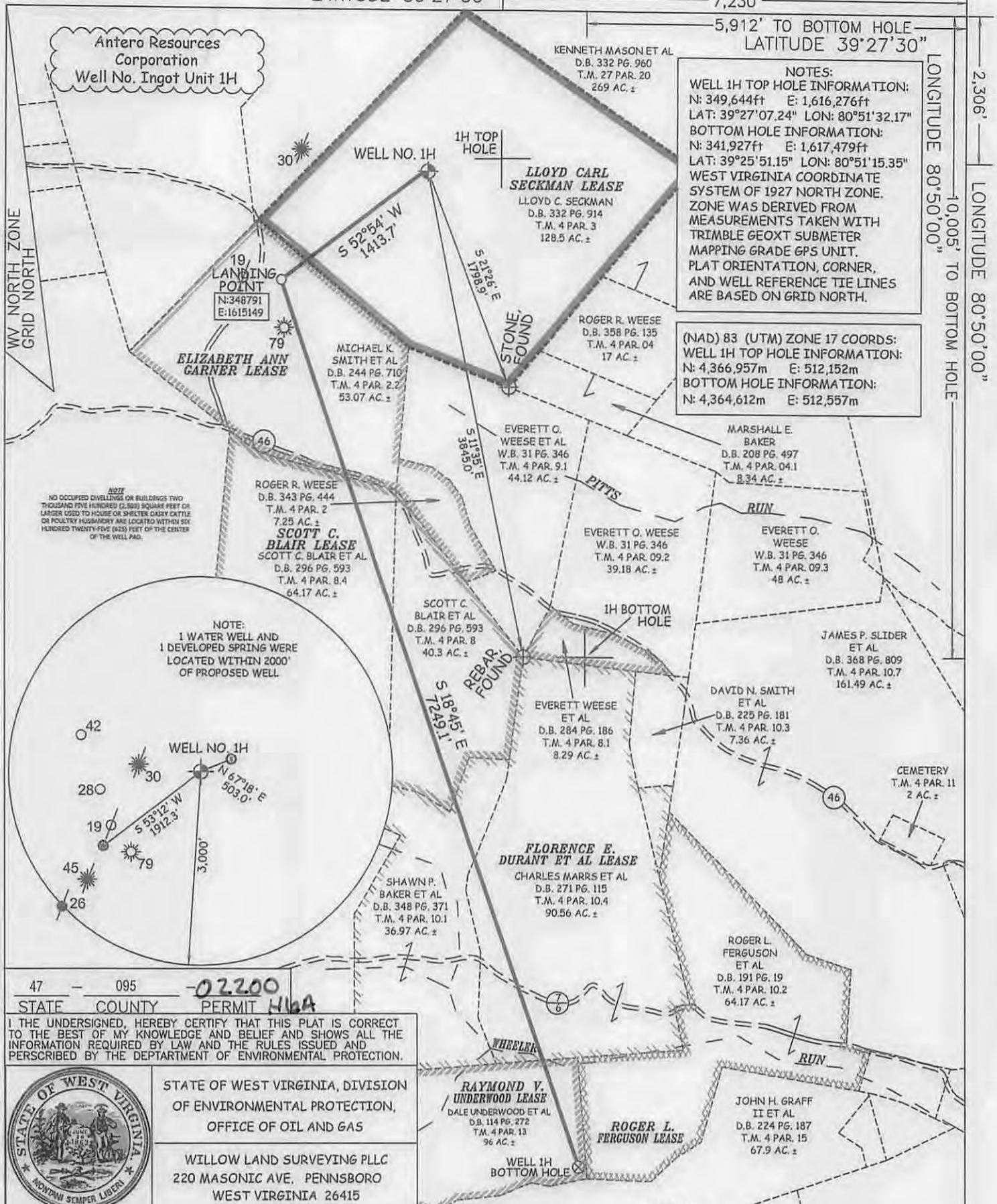
7,230'

5,912' TO BOTTOM HOLE  
LATITUDE 39°27'30"

LONGITUDE 80°50'00"

2,306'

LONGITUDE 80°50'00"



**NOTES:**  
 WELL 1H TOP HOLE INFORMATION:  
 N: 349,644ft E: 1,616,276ft  
 LAT: 39°27'07.24" LON: 80°51'32.17"  
 BOTTOM HOLE INFORMATION:  
 N: 341,927ft E: 1,617,479ft  
 LAT: 39°25'51.15" LON: 80°51'15.35"  
 WEST VIRGINIA COORDINATE SYSTEM OF 1927 NORTH ZONE. ZONE WAS DERIVED FROM MEASUREMENTS TAKEN WITH TRIMBLE GEOXT SUBMETER MAPPING GRADE GPS UNIT. PLAT ORIENTATION, CORNER, AND WELL REFERENCE TIE LINES ARE BASED ON GRID NORTH.

(NAD) 83 (UTM) ZONE 17 COORDS:  
 WELL 1H TOP HOLE INFORMATION:  
 N: 4,366,957m E: 512,152m  
 BOTTOM HOLE INFORMATION:  
 N: 4,364,612m E: 512,557m

Antero Resources Corporation  
 Well No. Ingot Unit 1H

LLOYD CARL SECKMAN LEASE  
 LLOYD C. SECKMAN  
 D.B. 332 PG. 914  
 T.M. 4 PAR. 3  
 128.5 AC.±

ELIZABETH ANN GARNER LEASE

MICHAEL K. SMITH ET AL  
 D.B. 244 PG. 710  
 T.M. 4 PAR. 2.2  
 53.07 AC.±

ROGER R. WEESE  
 D.B. 358 PG. 135  
 T.M. 4 PAR. 04  
 17 AC.±

ROGER R. WEESE  
 D.B. 343 PG. 444  
 T.M. 4 PAR. 2  
 7.25 AC.±

SCOTT C. BLAIR LEASE  
 SCOTT C. BLAIR ET AL  
 D.B. 296 PG. 593  
 T.M. 4 PAR. 8.4  
 64.17 AC.±

EVERETT O. WEESE ET AL  
 W.B. 31 PG. 346  
 T.M. 4 PAR. 9.1  
 44.12 AC.±

MARSHALL E. BAKER  
 D.B. 208 PG. 497  
 T.M. 4 PAR. 04.1  
 8.34 AC.±

EVERETT O. WEESE  
 W.B. 31 PG. 346  
 T.M. 4 PAR. 09.2  
 39.18 AC.±

EVERETT O. WEESE  
 W.B. 31 PG. 346  
 T.M. 4 PAR. 09.3  
 48 AC.±

JAMES P. SLIDER ET AL  
 D.B. 368 PG. 809  
 T.M. 4 PAR. 10.7  
 161.49 AC.±

DAVID N. SMITH ET AL  
 D.B. 225 PG. 181  
 T.M. 4 PAR. 10.3  
 7.36 AC.±

EVERETT WEESE ET AL  
 D.B. 284 PG. 186  
 T.M. 4 PAR. 8.1  
 8.29 AC.±

FLORENCE E. DURANT ET AL LEASE  
 CHARLES MARRS ET AL  
 D.B. 271 PG. 115  
 T.M. 4 PAR. 10.4  
 90.56 AC.±

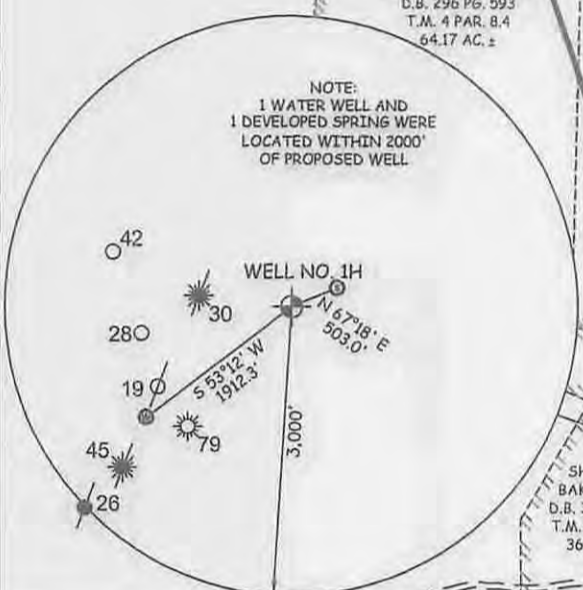
SHAWN P. BAKER ET AL  
 D.B. 348 PG. 371  
 T.M. 4 PAR. 10.1  
 36.97 AC.±

ROGER L. FERGUSON ET AL  
 D.B. 191 PG. 19  
 T.M. 4 PAR. 10.2  
 64.17 AC.±

RAYMOND V. UNDERWOOD LEASE  
 DALE UNDERWOOD ET AL  
 D.B. 114 PG. 272  
 T.M. 4 PAR. 13  
 96 AC.±

ROGER L. FERGUSON LEASE

JOHN H. GRAFF II ET AL  
 D.B. 224 PG. 187  
 T.M. 4 PAR. 15  
 67.9 AC.±

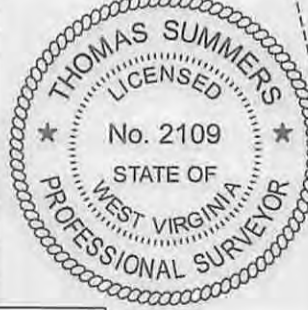


47 - 095 - 02200  
 STATE COUNTY PERMIT H16A

I THE UNDERSIGNED, HEREBY CERTIFY THAT THIS PLAT IS CORRECT TO THE BEST OF MY KNOWLEDGE AND BELIEF AND SHOWS ALL THE INFORMATION REQUIRED BY LAW AND THE RULES ISSUED AND PERSCRIBED BY THE DEPARTMENT OF ENVIRONMENTAL PROTECTION.

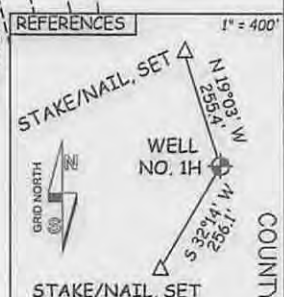


STATE OF WEST VIRGINIA, DIVISION OF ENVIRONMENTAL PROTECTION, OFFICE OF OIL AND GAS  
 WILLOW LAND SURVEYING PLLC  
 220 MASONIC AVE. PENNSBORO WEST VIRGINIA 26415

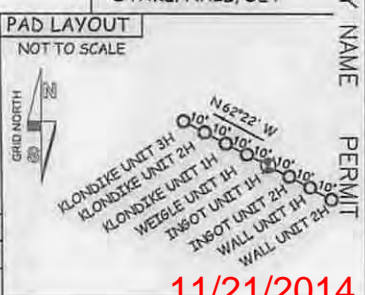


JOB # 14-058WA  
 DRAWING # INGOT1H  
 SCALE 1" = 1000'  
 MINIMUM DEGREE OF ACCURACY SUBMETER  
 PROVEN SOURCE OF ELEV. SUBMETER MAPPING GRADE GPS  
 STATE OF WEST VIRGINIA DEPARTMENT OF ENERGY DIVISION OF OIL AND GAS

**LEGEND**  
 - - - Surface Owner Boundary Lines +/-  
 - - - Interior Surface Tracts +/-  
 X Existing Fence  
 ⊕ Found monument, as noted  
 THOMAS SUMMERS P.S. 2109  
 DATE 08/04/14  
 OPERATOR'S WELL# INGOT UNIT #1H

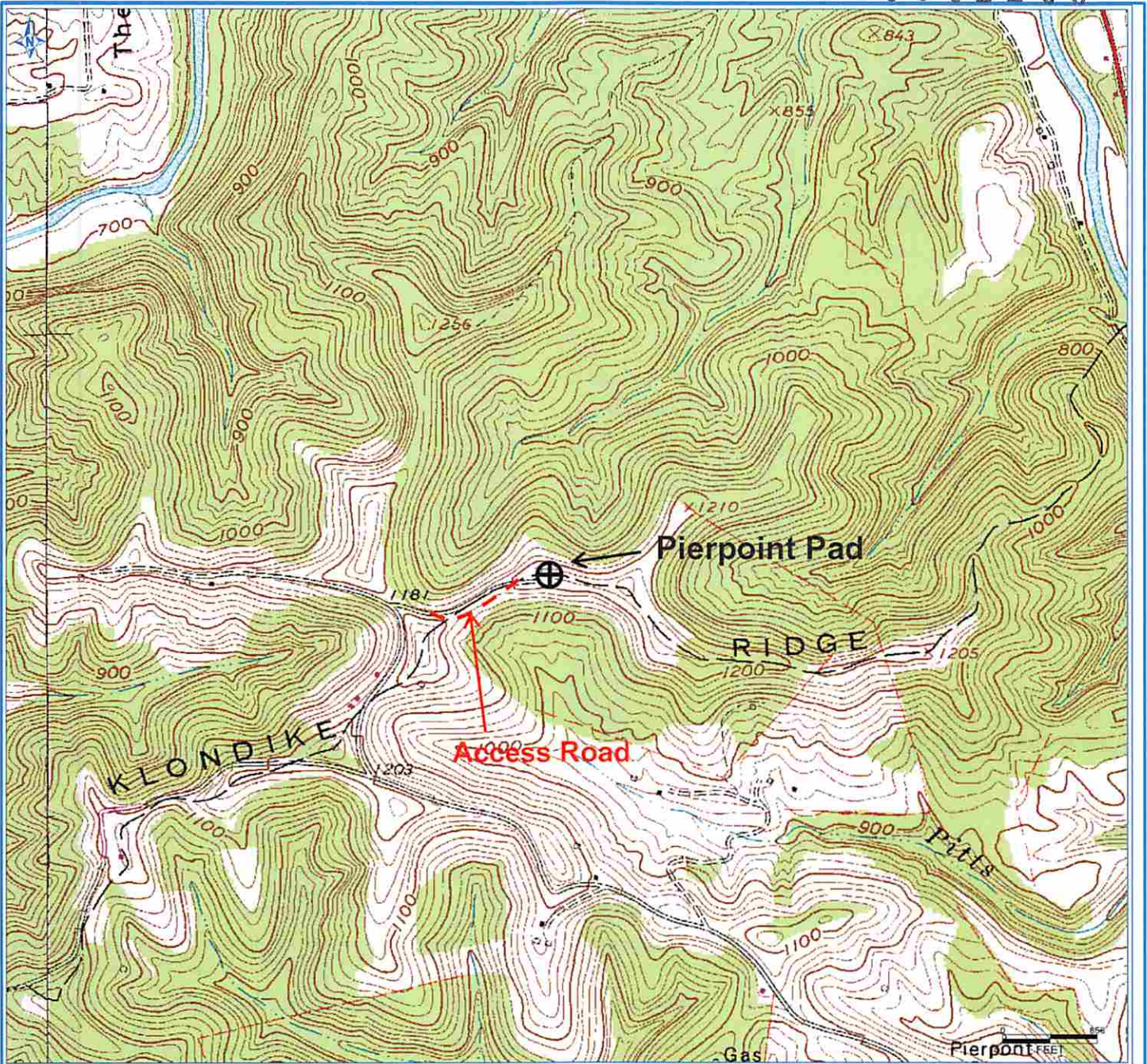


WELL TYPE: OIL  GAS  LIQUID INJECTION  WASTE DISPOSAL   
 (IF "GAS") PRODUCTION  STORAGE  DEEP  SHALLOW   
 LOCATION: ELEVATION 1,201' WATERSHED TRIBUTARY OF MIDDLE ISLAND CREEK  
 QUADRANGLE SHIRLEY 7.5' DISTRICT CENTERVILLE COUNTY TYLER  
 SURFACE OWNER LLOYD C. SECKMAN ACREAGE 128.5 ACRES +/-  
 OIL & GAS ROYALTY OWNER LLOYD CARL SECKMAN; ELIZABETH ANN GARNER; LEASE ACREAGE 128.5 AC.±; 90.605 AC.±  
 SCOTT C. BLAIR; FLORENCE E. DURANT ET AL; RAYMOND V. UNDERWOOD 104.47 AC.±; 127.53 AC.±; 96 AC.±  
 PROPOSED WORK: DRILL  CONVERT  DRILL DEEPER  REDRILL  FRACTURE OR STIMULATE   
 PLUG OFF OLD FORMATION  PERFORATE NEW FORMATION  OTHER PHYSICAL CHANGE IN WELL (SPECIFY)  PLUG & ABANDON  CLEAN OUT & REPLUG   
 TARGET FORMATION MARCELLUS ESTIMATED DEPTH 6,900' TVD 14,700' MD  
 WELL OPERATOR ANTERO RESOURCES CORP. DESIGNATED AGENT DIANNA STAMPER - CT CORPORATION SYSTEM  
 ADDRESS 1615 WYNKOOP STREET ADDRESS 5400 D BIG TYLER ROAD  
 FORM WW-6 DENVER, CO 80202 CHARLESTON, WV 25313



11/21/2014

4709502200



Antero Resources Corporation

APPALACHIAN BASIN

Ingot Unit 1H

Tyler County

Received

AUG 21 2014

Office of Oil and Gas  
WV Dept. of Environmental Protection

REMARKS

QUADRANGLE: Shirley 7.5'  
WATERSHED: TRIB. OF MIDDLE ISLAND CR  
DISTRICT: Centerville

Date: 7/11/2013