



Wall Unit 1H
Tyler County WV
Northing: 14326534.83
Easting: 1680254.73
As Drilled

Precision 525: GL 1201' + KB 19' @ 1220.0uoft
 Gr: 1201.0



		WELL DETAILS Wall Unit 1H			
+N/-S	+E/-W	Northing	Easting	Latitude	Longitude
0.0	0.0	14326534.83	1680254.73	39° 27' 7.152 N	80° 51' 31.941 W

Genie Lightfoot
 13:21, June 17 2015

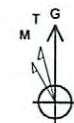
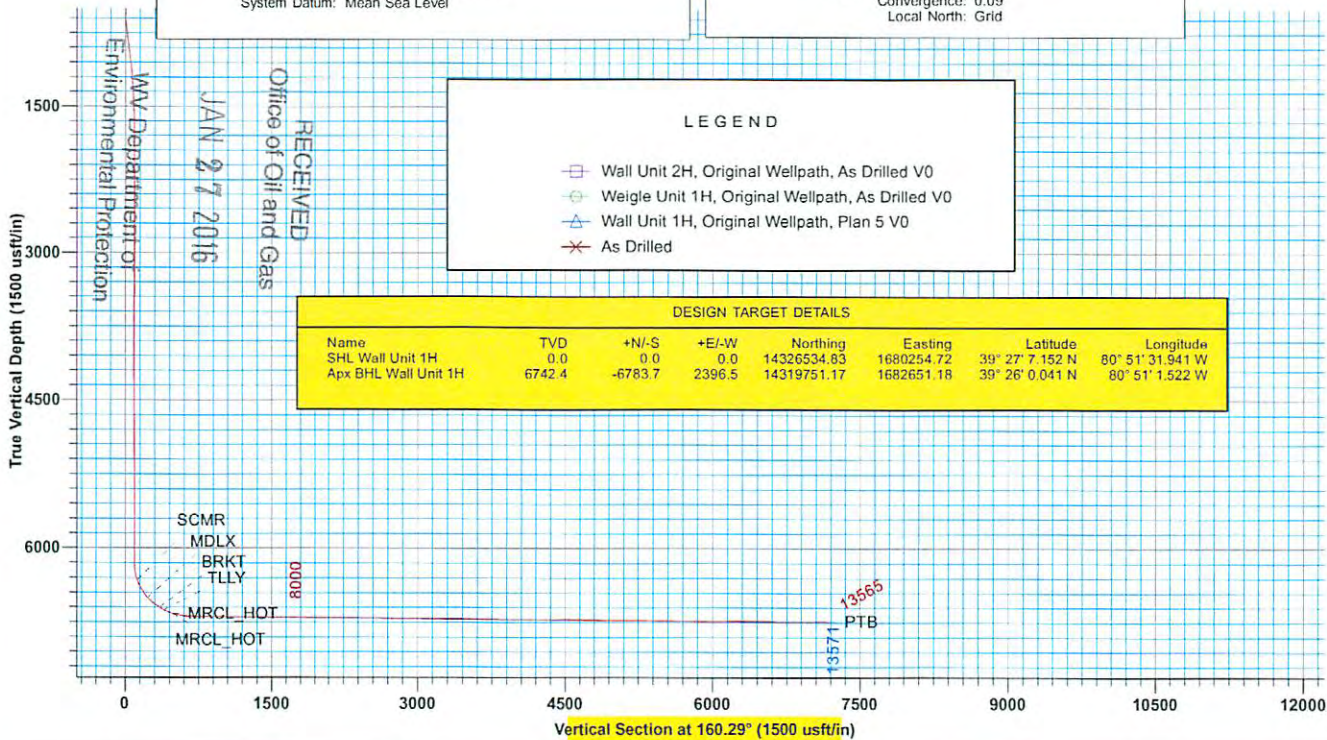
Scientific Drilling
 11220 NW 10th Street
 Yukon OK 73099

PROJECT DETAILS: Tyler County WV
 Geodetic System: Universal Transverse Mercator (US Survey Feet)
 Datum: NAD 1927 (NADCON CONUS)
 Ellipsoid: Clarke 1866
 Zone: Zone 17N (84 W to 78 W)
 System Datum: Mean Sea Level

SITE DETAILS: Pierpoint Pad, Ingot/Klondike/Wall/Weigle
 Site Centre Northing: 14326547.37
 Easting: 1680227.52
 Positional Uncertainty: 0.0
 Convergence: 0.09
 Local North: Grid

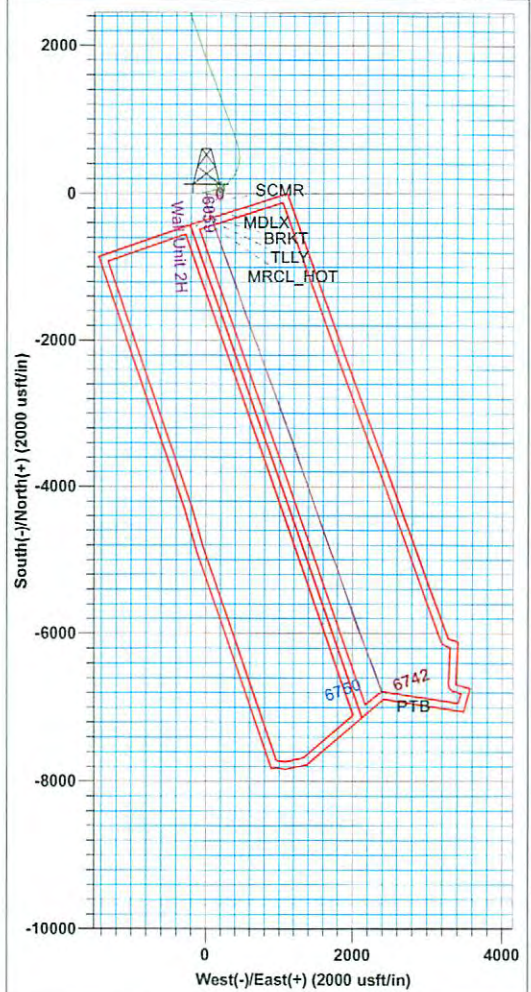
LEGEND	
	Wall Unit 2H, Original Wellpath, As Drilled V0
	Weigle Unit 1H, Original Wellpath, As Drilled V0
	Wall Unit 1H, Original Wellpath, Plan 5 V0
	As Drilled

DESIGN TARGET DETAILS							
Name	TVD	+N/-S	+E/-W	Northing	Easting	Latitude	Longitude
SHL Wall Unit 1H	0.0	0.0	0.0	14326534.83	1680254.72	39° 27' 7.152 N	80° 51' 31.941 W
Apx BHL Wall Unit 1H	6742.4	-6783.7	2396.5	14319751.17	1682651.18	39° 26' 0.041 N	80° 51' 1.522 W



To convert Magnetic North to Grid, Subtract 8.56°
 To convert True North to Grid, Subtract 0.09°

Azimuths to Grid North
 True North: -0.09°
 Magnetic North: -8.56°
 Magnetic Field
 Strength: 52222.3snT
 Dip Angle: 66.92°
 Date: 6/9/2015
 Model: BGGM2014





Antero

Tyler County WV
Pierpoint Pad:Ingot/Klondike/Wall/Weigle
Wall Unit 1H
Original Wellpath

Design: As Drilled

EOW Completion Report

17 June, 2015

RECEIVED
Office of Oil and Gas

JAN 27 2016

WV Department of
Environmental Protection



02/12/2016



EOW Completion Report



Company:	Antero	Local Co-ordinate Reference:	Well Wall Unit 1H
Project:	Tyler County WV	TVD Reference:	Precision 525: GL 1201' + KB 19' @ 1220.0usft
Site:	Pierpoint Pad:Ingot/Klondike/Wall/Weigle	MD Reference:	Precision 525: GL 1201' + KB 19' @ 1220.0usft
Well:	Wall Unit 1H	North Reference:	Grid
Wellbore:	Original Wellpath	Survey Calculation Method:	Minimum Curvature
Design:	As Drilled	Database:	Oklahoma District

Project	Tyler County WV, Tyler Co West Virginia		
Map System:	Universal Transverse Mercator (US Survey Fee	System Datum:	Mean Sea Level
Geo Datum:	NAD 1927 (NADCON CONUS)		
Map Zone:	Zone 17N (84 W to 78 W)		

Site	Pierpoint Pad:Ingot/Klondike/Wall/Weigle				
Site Position:	Northing:	14,326,547.37 usft	Latitude:	39° 27' 7.276 N	
From:	Easting:	1,680,227.52 usft	Longitude:	80° 51' 32.288 W	
Position Uncertainty:	0.0 usft	Slot Radius:	13-3/16"	Grid Convergence:	0.09 °

Well	Wall Unit 1H, Marcellus					
Well Position	+N/-S	0.0 usft	Northing:	14,326,534.83 usft	Latitude:	39° 27' 7.152 N
	+E/-W	0.0 usft	Easting:	1,680,254.73 usft	Longitude:	80° 51' 31.941 W
Position Uncertainty	2.0 usft	Wellhead Elevation:	1,220.0 usft	Ground Level:	1,201.0 usft	

Wellbore	Original Wellpath				
-----------------	-------------------	--	--	--	--

Magnetics	Model Name	Sample Date	Declination (°)	Dip Angle (°)	Field Strength (nT)
	BGGM2014	6/9/2015	-8.47	66.92	52,222

Design	As Drilled				
---------------	------------	--	--	--	--

Audit Notes:					
Version:	1.0	Phase:	ACTUAL	Tie On Depth:	0.0
Vertical Section:	Depth From (TVD) (usft)	+N/-S (usft)	+E/-W (usft)	Direction (°)	
	0.0	0.0	0.0	160.29	

RECEIVED
Office of Oil and Gas
JAN 27 2016

Survey Program	Date	6/17/2015			
From (usft)	To (usft)	Survey (Wellbore)	Tool Name	Description	
106.0	6,041.5	Survey #1 Def KOP Gyro (Original Wellpa	Standard Keeper 104	Standard Wireline Keeper ver 1.0.4	
6,041.5	13,565.0	Survey #2 MWD (Original Wellpath)	SDI MWD	Scientific Drilling Intl. MWD - Standard ver 1.0.1	

WV Department of
Environmental Protection

MD (usft)	Inc (°)	Azi (azimuth) (°)	TVD (usft)	N/S (usft)	E/W (usft)	V. Sec (usft)	DLeg (°/100usft)
0.0	0.00	0.00	0.0	0.0	0.0	0.0	0.00
106.0	0.41	101.84	106.0	-0.1	0.4	0.2	0.39
130.8	0.66	95.12	130.8	-0.1	0.6	0.3	1.03
155.5	0.59	84.15	155.5	-0.1	0.9	0.4	0.56
180.2	0.49	93.10	180.2	-0.1	1.1	0.5	0.53
205.6	0.34	102.54	205.6	-0.1	1.3	0.5	0.65
230.3	0.33	108.66	230.3	-0.2	1.4	0.6	0.15
254.9	0.33	96.14	254.9	-0.2	1.6	0.7	0.29
280.8	0.28	97.49	280.8	-0.2	1.7	0.8	0.20
305.4	0.25	116.88	305.4	-0.2	1.8	0.8	0.38
330.0	0.33	90.54	330.0	-0.3	1.9	0.9	0.62



EOW Completion Report



Company:	Antero	Local Co-ordinate Reference:	Well Wall Unit 1H
Project:	Tyler County WV	TVD Reference:	Precision 525: GL 1201' + KB 19' @ 1220.0usft
Site:	Pierpoint Pad:Ingot/Klondike/Wall/Weigle	MD Reference:	Precision 525: GL 1201' + KB 19' @ 1220.0usft
Well:	Wall Unit 1H	North Reference:	Grid
Wellbore:	Original Wellpath	Survey Calculation Method:	Minimum Curvature
Design:	As Drilled	Database:	Oklahoma District

Survey									
MD (usft)	Inc (°)	Azi (azimuth) (°)	TVD (usft)	N/S (usft)	E/W (usft)	V. Sec (usft)	DLeg (°/100usft)		
355.7	0.24	79.27	355.7	-0.3	2.0	0.9	0.41		
380.3	0.19	147.78	380.3	-0.3	2.1	1.0	1.00		
404.9	0.29	144.53	404.9	-0.4	2.2	1.1	0.41		
431.0	0.26	101.73	431.0	-0.4	2.3	1.2	0.78		
455.6	0.34	100.24	455.6	-0.5	2.4	1.2	0.33		
478.7	0.25	144.20	478.7	-0.5	2.5	1.3	1.02		
504.2	0.21	158.09	504.2	-0.6	2.5	1.4	0.27		
529.7	0.45	172.90	529.7	-0.7	2.6	1.6	0.99		
555.3	1.17	168.85	555.3	-1.1	2.6	1.9	2.83		
580.8	2.07	167.65	580.8	-1.8	2.8	2.6	3.53		
603.6	2.70	166.72	603.6	-2.7	3.0	3.6	2.77		
629.2	3.49	163.08	629.1	-4.1	3.4	5.0	3.18		
654.6	4.57	161.14	654.5	-5.8	3.9	6.7	4.27		
680.2	5.36	160.03	680.0	-7.8	4.7	9.0	3.11		
705.7	5.49	160.36	705.4	-10.1	5.5	11.4	0.52		
728.5	5.94	159.86	728.0	-12.2	6.2	13.6	1.99		
754.0	6.42	159.71	753.3	-14.8	7.2	16.4	1.88		
779.6	6.91	160.39	778.8	-17.6	8.2	19.4	1.93		
805.2	7.33	158.87	804.2	-20.6	9.3	22.5	1.80		
830.7	7.53	158.54	829.5	-23.7	10.5	25.8	0.80		
853.6	7.58	158.31	852.2	-26.5	11.6	28.8	0.26		
879.2	7.60	158.08	877.5	-29.6	12.9	32.2	0.14		
904.7	7.73	157.33	902.9	-32.8	14.2	35.6	0.64		
930.0	7.64	157.26	927.9	-35.9	15.5	39.0	0.36		
955.0	7.65	156.86	952.7	-38.9	16.8	42.3	0.22		
980.0	7.70	156.49	977.5	-42.0	18.1	45.6	0.28		
1,005.2	7.49	156.03	1,002.5	-45.1	19.4	49.0	0.87		
1,030.2	7.37	155.94	1,027.2	-48.0	20.7	52.2	0.48		
1,055.2	7.09	155.47	1,052.0	-50.9	22.0	55.3	1.14		
1,080.2	6.64	155.00	1,076.9	-53.6	23.3	58.3	1.81		
1,104.4	6.12	155.55	1,100.9	-56.0	24.4	61.0	2.17		
1,129.9	5.76	155.99	1,126.3	-58.4	25.5	63.6	1.42		
1,154.5	5.45	156.82	1,150.8	-60.6	26.5	66.0	1.30		
1,180.0	5.15	156.86	1,176.1	-62.8	27.4	68.4	1.18		
1,204.5	4.71	157.42	1,200.5	-64.7	28.2	70.5	1.81		
1,229.8	4.38	158.53	1,225.8	-66.6	29.0	72.5	1.35		
1,254.5	4.13	156.33	1,250.4	-68.3	29.7	74.3	1.21		
1,279.1	4.08	157.92	1,274.9	-69.9	30.3	76.0	0.51		
1,304.1	3.59	156.82	1,299.9	-71.5	31.0	77.7	1.98		
1,329.2	3.37	156.46	1,324.9	-72.9	31.6	79.2	0.88		
1,354.2	3.22	156.55	1,349.9	-74.2	32.2	80.7	0.60		
1,379.1	2.90	157.67	1,374.7	-75.4	32.7	82.0	1.31		
1,404.1	2.65	157.93	1,399.7	-76.5	33.1	83.2	1.00		
1,429.4	2.45	160.02	1,425.0	-77.6	33.5	84.3	0.87		

RECEIVED
Office of Oil and Gas



EOW Completion Report



Company:	Antero	Local Co-ordinate Reference:	Well Wall Unit 1H
Project:	Tyler County WV	TVD Reference:	Precision 525: GL 1201' + KB 19' @ 1220.0usft
Site:	Pierpoint Pad:Ingot/Klondike/Wall/Weigle	MD Reference:	Precision 525: GL 1201' + KB 19' @ 1220.0usft
Well:	Wall Unit 1H	North Reference:	Grid
Wellbore:	Original Wellpath	Survey Calculation Method:	Minimum Curvature
Design:	As Drilled	Database:	Oklahoma District

Survey									
MD (usft)	Inc (°)	Azi (azimuth) (°)	TVD (usft)	N/S (usft)	E/W (usft)	V. Sec (usft)	DLeg (°/100usft)		
1,455.0	2.11	157.01	1,450.6	-78.5	33.9	85.4	1.41		
1,480.6	1.91	158.52	1,476.2	-79.3	34.3	86.2	0.81		
1,505.6	1.71	156.51	1,501.2	-80.1	34.6	87.0	0.84		
1,530.4	1.59	154.31	1,525.9	-80.7	34.9	87.7	0.55		
1,553.9	1.40	158.46	1,549.5	-81.3	35.1	88.4	0.93		
1,578.2	1.28	165.88	1,573.8	-81.8	35.3	88.9	0.87		
1,604.0	1.19	160.18	1,599.5	-82.4	35.4	89.5	0.59		
1,629.7	1.03	161.65	1,625.2	-82.8	35.6	90.0	0.63		
1,655.4	0.86	168.16	1,650.9	-83.2	35.7	90.4	0.78		
1,678.3	0.78	164.20	1,673.8	-83.6	35.8	90.7	0.43		
1,704.0	0.64	164.00	1,699.5	-83.9	35.9	91.0	0.54		
1,729.6	0.51	163.80	1,725.1	-84.1	35.9	91.3	0.51		
1,755.1	0.47	177.09	1,750.6	-84.3	36.0	91.5	0.47		
1,780.3	0.43	171.27	1,775.8	-84.5	36.0	91.7	0.24		
1,805.5	0.41	169.12	1,801.1	-84.7	36.0	91.9	0.10		
1,830.8	0.34	178.91	1,826.3	-84.9	36.1	92.0	0.38		
1,853.3	0.32	165.92	1,848.8	-85.0	36.1	92.2	0.34		
1,878.5	0.18	157.58	1,874.0	-85.1	36.1	92.3	0.57		
1,903.7	0.18	157.55	1,899.2	-85.2	36.1	92.4	0.00		
1,928.9	0.13	125.46	1,924.4	-85.2	36.2	92.4	0.39		
1,954.0	0.14	147.34	1,949.5	-85.3	36.2	92.5	0.21		
1,979.2	0.17	123.64	1,974.8	-85.3	36.3	92.5	0.28		
2,004.5	0.18	116.39	2,000.0	-85.3	36.3	92.6	0.10		
2,029.2	0.19	157.27	2,024.8	-85.4	36.4	92.7	0.52		
2,054.0	0.22	118.69	2,049.5	-85.5	36.4	92.7	0.56		
2,079.7	0.21	141.68	2,075.2	-85.5	36.5	92.8	0.34		
2,103.9	0.19	169.91	2,099.4	-85.6	36.5	92.9	0.41		
2,129.1	0.14	186.33	2,124.6	-85.7	36.5	93.0	0.27		
2,154.3	0.09	196.44	2,149.9	-85.7	36.5	93.0	0.21		
2,179.6	0.04	122.79	2,175.1	-85.7	36.5	93.0	0.35		
2,204.4	0.08	158.16	2,199.9	-85.8	36.6	93.1	0.21		
2,229.2	0.13	92.63	2,224.7	-85.8	36.6	93.1	0.49		
2,254.4	0.10	183.15	2,249.9	-85.8	36.6	93.1	0.65		
2,279.6	0.13	150.92	2,275.1	-85.9	36.6	93.2	0.28		
2,304.8	0.09	154.20	2,300.4	-85.9	36.6	93.2	0.16		
2,330.1	0.03	115.85	2,325.6	-85.9	36.7	93.2	0.27		
2,355.3	0.11	193.86	2,350.8	-85.9	36.7	93.3	0.43		
2,380.1	0.10	220.00	2,375.6	-86.0	36.6	93.3	0.20		
2,405.4	0.19	255.93	2,400.9	-86.0	36.6	93.3	0.49		
2,430.6	0.20	234.67	2,426.1	-86.0	36.5	93.3	0.29		
2,455.8	0.13	236.75	2,451.4	-86.1	36.5	93.3	0.28		
2,478.0	0.12	239.28	2,473.5	-86.1	36.4	93.3	0.05		
2,503.6	0.18	237.32	2,499.1	-86.1	36.4	93.4	0.23		
2,528.4	0.16	227.10	2,524.0	-86.2	36.3	93.4	0.15		
2,553.7	0.27	229.28	2,549.2	-86.3	36.2	93.4	0.44		

RECEIVED
Office of Oil and Gas



EOW Completion Report



Company:	Antero	Local Co-ordinate Reference:	Well Wall Unit 1H
Project:	Tyler County WV	TVD Reference:	Precision 525: GL 1201' + KB 19' @ 1220.0usft
Site:	Pierpoint Pad:Ingot/Klondike/Wall/Weigle	MD Reference:	Precision 525: GL 1201' + KB 19' @ 1220.0usft
Well:	Wall Unit 1H	North Reference:	Grid
Wellbore:	Original Wellpath	Survey Calculation Method:	Minimum Curvature
Design:	As Drilled	Database:	Oklahoma District

Survey

MD (usft)	Inc (°)	Azi (azimuth) (°)	TVD (usft)	N/S (usft)	E/W (usft)	V. Sec (usft)	DLeg (°/100usft)
2,578.2	0.25	244.07	2,573.7	-86.3	36.1	93.4	0.29
2,603.4	0.26	255.15	2,598.9	-86.4	36.0	93.4	0.20
2,630.8	0.20	279.74	2,626.3	-86.4	35.9	93.4	0.42
2,655.4	0.26	255.29	2,651.0	-86.4	35.8	93.4	0.46
2,680.3	0.25	261.00	2,675.8	-86.4	35.7	93.4	0.11
2,705.0	0.22	261.45	2,700.5	-86.4	35.6	93.4	0.12
2,729.7	0.23	252.54	2,725.2	-86.4	35.5	93.3	0.15
2,754.5	0.26	253.15	2,750.0	-86.5	35.4	93.3	0.12
2,779.2	0.25	258.51	2,774.7	-86.5	35.3	93.3	0.10
2,804.0	0.35	264.53	2,799.5	-86.5	35.2	93.3	0.42
2,830.9	0.34	265.08	2,826.4	-86.5	35.0	93.3	0.04
2,855.2	0.40	268.24	2,850.7	-86.5	34.9	93.2	0.26
2,880.3	0.32	267.61	2,875.8	-86.5	34.7	93.2	0.32
2,904.6	0.36	264.90	2,900.1	-86.5	34.6	93.1	0.18
2,929.8	0.39	270.49	2,925.3	-86.5	34.4	93.1	0.19
2,954.0	0.51	272.12	2,949.5	-86.5	34.2	93.0	0.50
2,979.2	0.49	276.88	2,974.7	-86.5	34.0	92.9	0.18
3,003.7	0.57	268.93	2,999.3	-86.5	33.8	92.8	0.44
3,029.3	0.42	302.79	3,024.9	-86.5	33.6	92.7	1.26
3,053.9	0.51	286.58	3,049.4	-86.4	33.4	92.6	0.65
3,079.0	0.64	275.60	3,074.5	-86.3	33.1	92.5	0.68
3,104.0	0.49	282.83	3,099.5	-86.3	32.9	92.3	0.66
3,129.0	0.65	278.33	3,124.5	-86.3	32.6	92.2	0.66
3,153.9	0.66	270.52	3,149.4	-86.2	32.4	92.1	0.36
3,179.1	0.64	276.92	3,174.7	-86.2	32.1	92.0	0.30
3,204.2	0.54	282.69	3,199.7	-86.2	31.8	91.9	0.46
3,228.8	0.63	280.60	3,224.3	-86.1	31.6	91.7	0.38
3,253.8	0.59	278.53	3,249.3	-86.1	31.3	91.6	0.18
3,278.9	0.51	283.34	3,274.4	-86.0	31.1	91.5	0.37
3,304.0	0.52	283.04	3,299.5	-86.0	30.9	91.4	0.04
3,329.1	0.52	280.02	3,324.6	-85.9	30.6	91.2	0.11
3,354.1	0.50	281.28	3,349.6	-85.9	30.4	91.1	0.09
3,381.0	0.47	274.07	3,376.5	-85.9	30.2	91.0	0.25
3,405.5	0.50	267.60	3,401.0	-85.9	30.0	91.0	0.25
3,430.1	0.49	264.44	3,425.6	-85.9	29.8	90.9	0.12
3,454.7	0.54	270.98	3,450.2	-85.9	29.6	90.8	0.31
3,479.3	0.56	264.86	3,474.8	-85.9	29.3	90.8	0.25
3,503.7	0.54	268.63	3,499.2	-85.9	29.1	90.7	0.17
3,528.4	0.65	264.46	3,523.9	-85.9	28.8	90.6	0.48
3,555.7	0.55	267.34	3,551.2	-86.0	28.5	90.5	0.38
3,580.3	0.56	268.42	3,575.7	-86.0	28.3	90.5	0.06
3,604.7	0.54	270.35	3,600.2	-86.0	28.1	90.4	0.11
3,629.3	0.48	268.86	3,624.8	-86.0	27.9	90.3	0.25
3,653.9	0.53	268.25	3,649.4	-86.0	27.6	90.3	0.20

RECEIVED
Office of Oil and Gas



EOW Completion Report



Company:	Antero	Local Co-ordinate Reference:	Well Wall Unit 1H
Project:	Tyler County WV	TVD Reference:	Precision 525: GL 1201' + KB 19' @ 1220.0usft
Site:	Pierpoint Pad:Ingot/Klondike/Wall/Weigle	MD Reference:	Precision 525: GL 1201' + KB 19' @ 1220.0usft
Well:	Wall Unit 1H	North Reference:	Grid
Wellbore:	Original Wellpath	Survey Calculation Method:	Minimum Curvature
Design:	As Drilled	Database:	Oklahoma District

Survey								
MD (usft)	Inc (°)	Azi (azimuth) (°)	TVD (usft)	N/S (usft)	E/W (usft)	V. Sec (usft)	DLeg (°/100usft)	
3,678.5	0.53	259.53	3,674.0	-86.0	27.4	90.2	0.33	
3,703.1	0.56	267.67	3,698.6	-86.0	27.2	90.1	0.34	
3,730.4	0.68	261.59	3,725.8	-86.0	26.9	90.1	0.50	
3,755.4	0.80	258.20	3,750.8	-86.1	26.6	90.0	0.51	
3,779.5	0.65	259.01	3,775.0	-86.2	26.3	90.0	0.62	
3,804.5	0.71	264.04	3,800.0	-86.2	26.0	89.9	0.34	
3,830.9	0.76	264.88	3,826.4	-86.2	25.6	89.8	0.19	
3,855.4	0.74	265.87	3,850.9	-86.3	25.3	89.8	0.10	
3,879.9	0.70	271.58	3,875.4	-86.3	25.0	89.7	0.34	
3,904.7	0.65	264.28	3,900.1	-86.3	24.7	89.6	0.40	
3,929.0	0.72	267.28	3,924.5	-86.3	24.4	89.5	0.32	
3,955.9	0.71	259.45	3,951.4	-86.3	24.1	89.4	0.36	
3,980.6	0.60	255.56	3,976.1	-86.4	23.8	89.4	0.48	
4,004.4	0.66	254.29	3,999.9	-86.5	23.6	89.4	0.26	
4,029.1	0.63	247.90	4,024.6	-86.6	23.3	89.4	0.32	
4,053.0	0.74	251.38	4,048.4	-86.7	23.0	89.4	0.49	
4,079.4	0.68	254.46	4,074.9	-86.8	22.7	89.3	0.27	
4,103.7	0.63	251.87	4,099.2	-86.8	22.5	89.3	0.24	
4,130.1	0.61	254.47	4,125.6	-86.9	22.2	89.3	0.13	
4,154.3	0.71	253.91	4,149.8	-87.0	21.9	89.3	0.41	
4,180.7	0.66	252.29	4,176.1	-87.1	21.6	89.3	0.20	
4,204.5	0.55	257.08	4,199.9	-87.2	21.4	89.3	0.51	
4,230.0	0.71	245.61	4,225.5	-87.2	21.1	89.3	0.79	
4,255.7	0.57	255.77	4,251.2	-87.3	20.8	89.3	0.70	
4,278.1	0.64	244.31	4,273.6	-87.4	20.6	89.3	0.62	
4,304.3	0.56	236.62	4,299.7	-87.6	20.4	89.3	0.43	
4,329.5	0.63	230.16	4,324.9	-87.7	20.2	89.4	0.38	
4,355.7	0.59	223.56	4,351.1	-87.9	20.0	89.5	0.31	
4,380.9	0.66	219.86	4,376.3	-88.1	19.8	89.6	0.32	
4,403.7	0.66	209.99	4,399.2	-88.3	19.6	89.8	0.50	
4,429.4	0.69	217.58	4,424.8	-88.6	19.5	90.0	0.37	
4,455.1	0.69	222.70	4,450.5	-88.8	19.3	90.1	0.24	
4,480.7	0.66	216.97	4,476.1	-89.0	19.1	90.3	0.29	
4,503.6	0.62	214.39	4,499.0	-89.3	18.9	90.4	0.22	
4,529.1	0.86	223.84	4,524.6	-89.5	18.7	90.6	1.05	
4,555.6	0.74	224.54	4,551.0	-89.8	18.5	90.7	0.46	
4,579.6	0.67	218.60	4,575.0	-90.0	18.3	90.9	0.42	
4,603.6	0.66	227.79	4,599.0	-90.2	18.1	91.0	0.45	
4,630.2	0.65	226.31	4,625.6	-90.4	17.9	91.1	0.07	
4,653.6	0.58	220.94	4,649.0	-90.6	17.7	91.2	0.39	
4,680.1	0.72	224.72	4,675.5	-90.8	17.5	91.4	0.55	
4,704.0	0.65	222.69	4,699.4	-91.0	17.3	91.5	0.31	
4,730.5	0.71	211.83	4,725.9	-91.3	17.1	91.7	0.53	
4,754.4	0.72	221.43	4,749.8	-91.5	16.9	91.8	0.50	

RECEIVED
Office of Oil and Gas



EOW Completion Report



Company:	Antero	Local Co-ordinate Reference:	Well Wall Unit 1H
Project:	Tyler County WV	TVD Reference:	Precision 525: GL 1201' + KB 19' @ 1220.0usft
Site:	Pierpoint Pad:Ingot/Klondike/Wall/Weigle	MD Reference:	Precision 525: GL 1201' + KB 19' @ 1220.0usft
Well:	Wall Unit 1H	North Reference:	Grid
Wellbore:	Original Wellpath	Survey Calculation Method:	Minimum Curvature
Design:	As Drilled	Database:	Oklahoma District

Survey

MD (usft)	Inc (°)	Azi (azimuth) (°)	TVD (usft)	N/S (usft)	E/W (usft)	V. Sec (usft)	DLeg (°/100usft)
4,780.9	0.73	215.74	4,776.3	-91.8	16.7	92.0	0.27
4,804.7	0.72	218.71	4,800.2	-92.0	16.5	92.2	0.16
4,828.7	0.70	214.64	4,824.1	-92.2	16.3	92.3	0.23
4,855.1	0.74	217.66	4,850.5	-92.5	16.1	92.5	0.21
4,878.8	0.81	217.35	4,874.2	-92.8	15.9	92.7	0.30
4,904.9	0.69	219.38	4,900.3	-93.0	15.7	92.9	0.47
4,930.5	0.80	219.90	4,925.9	-93.3	15.5	93.1	0.43
4,953.9	0.78	218.25	4,949.3	-93.5	15.3	93.2	0.13
4,979.9	0.72	224.17	4,975.3	-93.8	15.1	93.4	0.38
5,005.4	0.69	220.40	5,000.8	-94.0	14.9	93.5	0.22
5,028.8	0.62	221.23	5,024.2	-94.2	14.7	93.7	0.30
5,054.8	0.65	233.18	5,050.2	-94.4	14.5	93.8	0.52
5,080.7	0.61	229.56	5,076.1	-94.6	14.3	93.9	0.22
5,104.2	0.58	224.05	5,099.5	-94.8	14.1	94.0	0.28
5,130.1	0.66	224.78	5,125.5	-95.0	13.9	94.1	0.31
5,153.9	0.61	232.66	5,149.3	-95.1	13.7	94.2	0.42
5,179.9	0.58	230.42	5,175.3	-95.3	13.5	94.3	0.15
5,205.9	0.65	227.03	5,201.3	-95.5	13.3	94.4	0.30
5,229.3	0.61	230.45	5,224.7	-95.7	13.1	94.5	0.23
5,255.3	0.75	228.10	5,250.7	-95.9	12.9	94.6	0.55
5,278.7	0.63	225.79	5,274.0	-96.1	12.7	94.7	0.53
5,304.7	0.65	237.07	5,300.1	-96.2	12.4	94.8	0.49
5,330.7	0.69	228.70	5,326.0	-96.4	12.2	94.9	0.41
5,354.1	0.74	235.30	5,349.5	-96.6	12.0	95.0	0.41
5,380.1	0.72	240.69	5,375.5	-96.8	11.7	95.0	0.28
5,403.5	0.80	242.51	5,398.8	-96.9	11.4	95.1	0.36
5,429.6	0.74	233.99	5,424.9	-97.1	11.1	95.2	0.49
5,455.6	0.75	242.94	5,450.9	-97.3	10.8	95.2	0.45
5,479.0	0.75	244.23	5,474.4	-97.4	10.5	95.3	0.07
5,505.1	0.76	248.42	5,500.4	-97.5	10.2	95.3	0.22
5,530.7	0.74	240.81	5,526.0	-97.7	9.9	95.3	0.40
5,554.0	0.76	248.47	5,549.4	-97.8	9.7	95.3	0.44
5,579.6	0.78	248.09	5,575.0	-98.0	9.3	95.4	0.08
5,605.8	0.75	251.02	5,601.2	-98.1	9.0	95.4	0.19
5,629.0	0.76	251.23	5,624.3	-98.2	8.7	95.4	0.04
5,654.4	0.54	242.87	5,649.8	-98.3	8.4	95.4	0.94
5,680.4	0.72	256.81	5,675.7	-98.4	8.2	95.4	0.91
5,705.4	0.65	244.37	5,700.8	-98.5	7.9	95.4	0.65
5,730.9	0.58	240.96	5,726.2	-98.6	7.7	95.4	0.31
5,753.9	0.56	255.10	5,749.2	-98.7	7.4	95.4	0.62
5,779.4	0.59	250.14	5,774.8	-98.8	7.2	95.4	0.23
5,804.5	0.60	250.68	5,799.8	-98.8	7.0	95.4	0.05
5,829.9	0.63	244.74	5,825.2	-98.9	6.7	95.4	0.28
5,854.9	0.64	252.29	5,850.3	-99.0	6.4	95.4	0.34



EOW Completion Report



Company:	Antero	Local Co-ordinate Reference:	Well Wall Unit 1H
Project:	Tyler County WV	TVD Reference:	Precision 525: GL 1201' + KB 19' @ 1220.0usft
Site:	Pierpoint Pad:Ingot/Klondike/Wall/Weigle	MD Reference:	Precision 525: GL 1201' + KB 19' @ 1220.0usft
Well:	Wall Unit 1H	North Reference:	Grid
Wellbore:	Original Wellpath	Survey Calculation Method:	Minimum Curvature
Design:	As Drilled	Database:	Oklahoma District

Survey

MD (usft)	Inc (°)	Azi (azimuth) (°)	TVD (usft)	N/S (usft)	E/W (usft)	V. Sec (usft)	DLeg (°/100usft)
5,880.4	0.54	244.49	5,875.7	-99.1	6.2	95.4	0.50
5,905.9	0.58	254.44	5,901.2	-99.2	6.0	95.4	0.41
5,930.9	0.52	269.41	5,926.2	-99.3	5.7	95.4	0.62
5,953.9	0.63	257.99	5,949.2	-99.3	5.5	95.3	0.69
5,979.1	0.57	244.56	5,974.5	-99.4	5.3	95.3	0.60
6,004.7	0.52	238.08	6,000.0	-99.5	5.0	95.4	0.31
6,030.9	0.62	256.20	6,026.2	-99.6	4.8	95.4	0.78
6,041.5	0.64	258.95	6,036.8	-99.6	4.7	95.4	0.34
6,077.0	0.58	260.27	6,072.3	-99.7	4.3	95.3	0.17
6,122.0	0.62	268.39	6,117.3	-99.7	3.9	95.2	0.21
6,167.0	0.74	269.64	6,162.3	-99.7	3.3	95.0	0.27
6,212.0	4.48	176.74	6,207.3	-101.5	3.1	96.6	10.17
6,257.0	10.41	171.93	6,251.9	-107.3	3.8	102.3	13.24
6,302.0	16.54	169.91	6,295.6	-117.6	5.5	112.6	13.66
6,337.0	20.76	169.47	6,328.8	-128.6	7.5	123.6	12.05
SCMR							
6,346.0	21.84	169.38	6,337.1	-131.8	8.1	126.8	12.05
6,391.0	26.78	168.35	6,378.1	-150.0	11.7	145.2	11.02
6,436.0	30.33	165.96	6,417.7	-171.0	16.5	166.5	8.29
6,481.0	33.64	162.37	6,455.8	-193.9	23.0	190.3	8.48
6,526.0	38.68	161.09	6,492.2	-219.1	31.4	216.8	11.32
6,541.0	40.98	160.96	6,503.7	-228.2	34.5	226.4	15.34
MDLX							
6,571.0	45.58	160.73	6,525.5	-247.6	41.2	247.0	15.34
6,616.0	52.49	160.09	6,555.0	-279.6	52.6	280.9	15.39
6,660.0	54.11	159.99	6,581.3	-312.7	64.7	316.2	3.69
6,697.0	57.30	159.57	6,602.1	-341.4	75.2	346.8	8.67
BRKT							
6,705.0	57.99	159.48	6,606.4	-347.7	77.6	353.5	8.67
6,749.0	62.71	158.22	6,628.2	-383.4	91.4	391.8	11.02
TLLY							
6,750.0	62.82	158.19	6,628.6	-384.2	91.7	392.6	11.02
6,795.0	66.78	158.37	6,647.8	-422.0	106.8	433.3	8.81
6,840.0	72.57	159.82	6,663.4	-461.4	121.8	475.5	13.22
6,856.0	74.19	160.33	6,668.0	-475.9	127.1	490.8	10.60
MRCL_HOT							
6,884.0	77.04	161.20	6,674.9	-501.5	136.0	517.9	10.60
6,929.0	79.26	161.65	6,684.2	-543.2	150.0	562.0	5.03
6,974.0	83.80	160.55	6,690.8	-585.3	164.5	606.5	10.37
7,002.0	86.64	160.72	6,693.1	-611.6	173.7	634.4	10.16
7,047.0	88.96	160.15	6,694.9	-654.0	188.8	679.3	5.31
7,092.0	89.03	159.48	6,695.7	-696.2	204.3	724.3	1.50
7,182.0	90.10	159.82	6,696.3	-780.6	235.6	814.3	1.25
7,271.0	90.30	158.54	6,696.0	-863.8	267.2	903.3	1.46
7,361.0	90.17	157.07	6,695.7	-947.1	301.2	993.2	1.64

RECEIVED

Office of Oil and Gas COMPASS 5000.1 Build 74

JAN 27 2016

02/12/2016



EOW Completion Report



Company:	Antero	Local Co-ordinate Reference:	Well Wall Unit 1H
Project:	Tyler County WV	TVD Reference:	Precision 525: GL 1201' + KB 19' @ 1220.0usft
Site:	Pierpoint Pad:Ingot/Klondike/Wall/Weigle	MD Reference:	Precision 525: GL 1201' + KB 19' @ 1220.0usft
Well:	Wall Unit 1H	North Reference:	Grid
Wellbore:	Original Wellpath	Survey Calculation Method:	Minimum Curvature
Design:	As Drilled	Database:	Oklahoma District

Survey							
MD (usft)	Inc (°)	Azi (azimuth) (°)	TVD (usft)	N/S (usft)	E/W (usft)	V. Sec (usft)	DLeg (°/100usft)
7,450.0	87.99	157.59	6,697.1	-1,029.2	335.5	1,082.1	2.52
7,540.0	88.79	160.35	6,699.6	-1,113.2	367.8	1,172.0	3.19
7,630.0	89.09	161.22	6,701.3	-1,198.2	397.4	1,262.0	1.02
7,719.0	88.93	161.67	6,702.8	-1,282.5	425.7	1,351.0	0.54
7,809.0	89.77	163.55	6,703.8	-1,368.4	452.6	1,440.9	2.29
7,899.0	90.17	163.92	6,703.9	-1,454.8	477.8	1,530.7	0.61
7,989.0	89.53	161.32	6,704.1	-1,540.7	504.7	1,620.6	2.98
8,078.0	89.73	160.27	6,704.7	-1,624.7	534.0	1,709.6	1.20
8,168.0	89.43	159.62	6,705.4	-1,709.3	564.8	1,799.6	0.80
8,257.0	89.23	158.58	6,706.4	-1,792.4	596.6	1,888.6	1.19
8,347.0	89.83	160.30	6,707.1	-1,876.7	628.2	1,978.6	2.02
8,437.0	89.77	158.95	6,707.5	-1,961.0	659.5	2,068.6	1.50
8,526.0	89.46	157.77	6,708.0	-2,043.7	692.3	2,157.5	1.37
8,616.0	90.13	161.83	6,708.4	-2,128.2	723.4	2,247.5	4.57
8,706.0	89.97	161.43	6,708.3	-2,213.6	751.8	2,337.5	0.48
8,796.0	89.29	160.76	6,708.9	-2,298.7	780.9	2,427.4	1.06
8,885.0	89.16	159.75	6,710.1	-2,382.5	811.0	2,516.4	1.14
8,975.0	88.86	158.53	6,711.6	-2,466.6	843.0	2,606.4	1.40
9,065.0	89.30	159.61	6,713.1	-2,550.6	875.2	2,696.4	1.30
9,155.0	89.36	159.60	6,714.1	-2,635.0	906.6	2,786.4	0.07
9,244.0	89.40	159.61	6,715.1	-2,718.4	937.6	2,875.3	0.05
9,334.0	89.40	159.17	6,716.0	-2,802.6	969.2	2,965.3	0.49
9,424.0	89.60	159.88	6,716.8	-2,887.0	1,000.7	3,055.3	0.82
9,514.0	89.50	158.49	6,717.5	-2,971.1	1,032.7	3,145.3	1.55
9,603.0	88.76	159.77	6,718.9	-3,054.2	1,064.4	3,234.3	1.66
9,693.0	89.80	161.10	6,720.0	-3,139.0	1,094.5	3,324.3	1.88
9,782.0	89.66	160.43	6,720.4	-3,223.0	1,123.9	3,413.2	0.77
9,872.0	89.06	158.08	6,721.4	-3,307.2	1,155.7	3,503.2	2.69
9,962.0	89.60	161.76	6,722.5	-3,391.7	1,186.6	3,593.2	4.13
10,052.0	89.90	162.31	6,722.9	-3,477.3	1,214.4	3,683.2	0.70
10,142.0	89.26	159.99	6,723.5	-3,562.5	1,243.5	3,773.1	2.67
10,231.0	90.37	162.51	6,723.8	-3,646.8	1,272.1	3,862.1	3.09
10,321.0	89.53	160.34	6,723.9	-3,732.1	1,300.7	3,952.1	2.59
10,411.0	90.00	161.21	6,724.3	-3,817.0	1,330.4	4,042.1	1.10
10,501.0	89.46	159.44	6,724.7	-3,901.8	1,360.7	4,132.1	2.06
10,590.0	90.20	161.11	6,725.0	-3,985.6	1,390.7	4,221.1	2.05
10,680.0	90.40	161.61	6,724.5	-4,070.8	1,419.5	4,311.1	0.60
10,769.0	90.70	162.19	6,723.6	-4,155.4	1,447.1	4,400.0	0.73
10,859.0	89.80	161.10	6,723.2	-4,240.8	1,475.5	4,490.0	1.57
10,949.0	87.95	161.71	6,725.0	-4,326.1	1,504.2	4,580.0	2.16
11,038.0	87.51	162.07	6,728.5	-4,410.6	1,531.8	4,668.8	0.64
11,128.0	89.56	160.49	6,730.8	-4,495.9	1,560.7	4,758.8	2.88
11,218.0	89.93	160.53	6,731.2	-4,580.7	1,590.7	4,848.8	0.41
11,307.0	89.09	158.15	6,732.0	-4,664.0	1,622.1	4,937.8	2.84

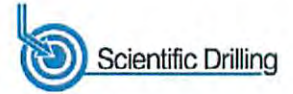
RECEIVED

JAN 27 2016

02/12/2016



EOW Completion Report



Company:	Antero	Local Co-ordinate Reference:	Well Wall Unit 1H
Project:	Tyler County WV	TVD Reference:	Precision 525: GL 1201' + KB 19' @ 1220.0usft
Site:	Pierpoint Pad:Ingot/Klondike/Wall/Weigle	MD Reference:	Precision 525: GL 1201' + KB 19' @ 1220.0usft
Well:	Wall Unit 1H	North Reference:	Grid
Wellbore:	Original Wellpath	Survey Calculation Method:	Minimum Curvature
Design:	As Drilled	Database:	Oklahoma District

MD (usft)	Inc (°)	Azi (azimuth) (°)	TVD (usft)	N/S (usft)	E/W (usft)	V. Sec (usft)	DLeg (°/100usft)
11,397.0	90.17	160.27	6,732.6	-4,748.1	1,654.0	5,027.7	2.64
11,486.0	89.80	158.29	6,732.6	-4,831.3	1,685.5	5,116.7	2.26
11,576.0	89.40	157.42	6,733.2	-4,914.7	1,719.4	5,206.6	1.06
11,666.0	89.20	159.90	6,734.3	-4,998.5	1,752.2	5,296.6	2.76
11,755.0	88.63	158.24	6,736.0	-5,081.6	1,784.0	5,385.6	1.97
11,845.0	88.96	160.65	6,737.9	-5,165.9	1,815.6	5,475.5	2.70
11,935.0	89.87	162.70	6,738.8	-5,251.3	1,843.9	5,565.5	2.49
12,024.0	90.34	163.48	6,738.7	-5,336.4	1,869.7	5,654.4	1.02
12,114.0	89.60	163.32	6,738.7	-5,422.7	1,895.5	5,744.2	0.84
12,203.0	89.50	161.21	6,739.4	-5,507.4	1,922.6	5,833.2	2.37
12,293.0	89.46	161.48	6,740.2	-5,592.7	1,951.4	5,923.2	0.30
12,383.0	89.90	161.40	6,740.7	-5,678.0	1,980.0	6,013.1	0.50
12,473.0	90.74	159.82	6,740.2	-5,762.9	2,009.9	6,103.1	1.99
12,562.0	90.44	158.70	6,739.3	-5,846.2	2,041.4	6,192.1	1.30
12,652.0	89.23	157.31	6,739.6	-5,929.6	2,075.1	6,282.0	2.05
12,741.0	88.66	157.99	6,741.2	-6,011.9	2,108.9	6,370.9	1.00
12,831.0	89.20	159.34	6,742.9	-6,095.7	2,141.7	6,460.9	1.62
12,921.0	90.00	159.34	6,743.5	-6,179.9	2,173.4	6,550.9	0.89
13,011.0	90.20	159.06	6,743.4	-6,264.1	2,205.4	6,640.8	0.38
13,100.0	89.53	156.22	6,743.6	-6,346.4	2,239.2	6,729.7	3.28
13,190.0	90.34	158.15	6,743.7	-6,429.3	2,274.1	6,819.6	2.33
13,279.0	90.40	159.63	6,743.1	-6,512.3	2,306.2	6,908.6	1.66
13,369.0	90.70	162.56	6,742.2	-6,597.5	2,335.3	6,998.5	3.27
13,459.0	90.62	162.57	6,741.2	-6,683.3	2,362.3	7,088.5	0.09
13,506.0	88.99	160.82	6,741.4	-6,727.9	2,377.1	7,135.5	5.09
13,565.0	88.99	160.82	6,742.4	-6,783.7	2,396.5	7,194.4	0.00

PTB

Measured Depth (usft)	Vertical Depth (usft)	Local Coordinates		Comment
		+N/-S (usft)	+E/-W (usft)	
6,337.0	6,328.8	-128.6	7.5	SCMR
6,541.0	6,503.7	-228.2	34.5	MDLX
6,697.0	6,602.1	-341.4	75.2	BRKT
6,749.0	6,628.2	-383.4	91.4	TLLY
6,856.0	6,668.0	-475.9	127.1	MRCL_HOT
13,565.0	6,742.4	-6,783.7	2,396.5	PTB

Checked By: _____ Approved By: _____ Date: _____

RECEIVED
Office of Oil and Gas

JAN 27 2016